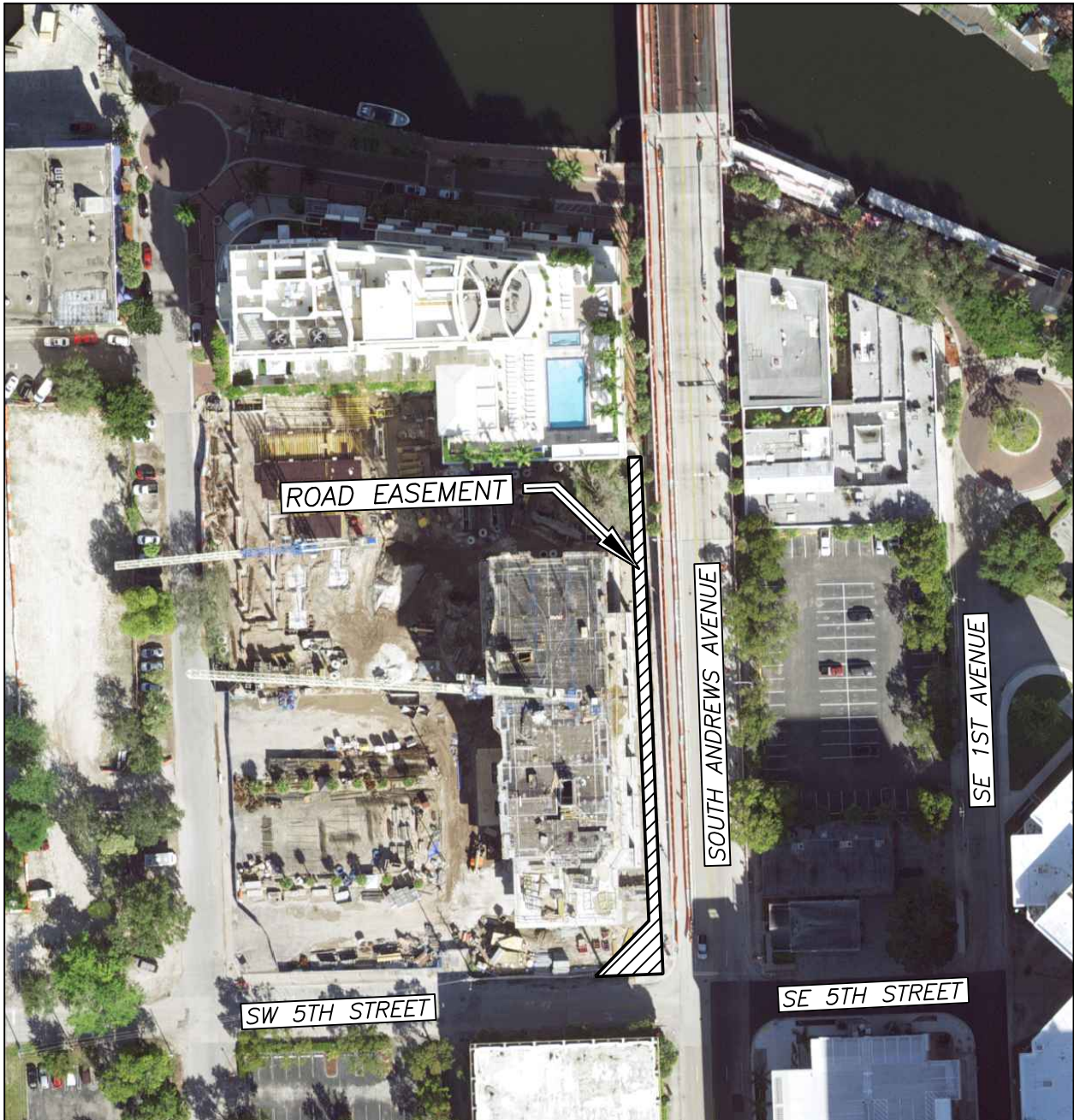


LOCATION MAP

PROJECT: PD-2020-04
FROM: NEW RIVER III, LLC
TO: BROWARD COUNTY
MUNICIPALITY: CITY OF FORT LAUDERDALE
COMMISSION DISTRICT: 7

SECTION 10, TOWNSHIP 50 SOUTH, RANGE 42 EAST



SHEET 1 OF 1

Scale: Not To Scale	Drawn by: JAT	Date: 10-28-20	Checked by: CAD	Date: 10-28-20
------------------------	------------------	-------------------	--------------------	-------------------

File Location:
E:\RW\Location Maps\AGREEMENTS\PD-2020-04.dwg