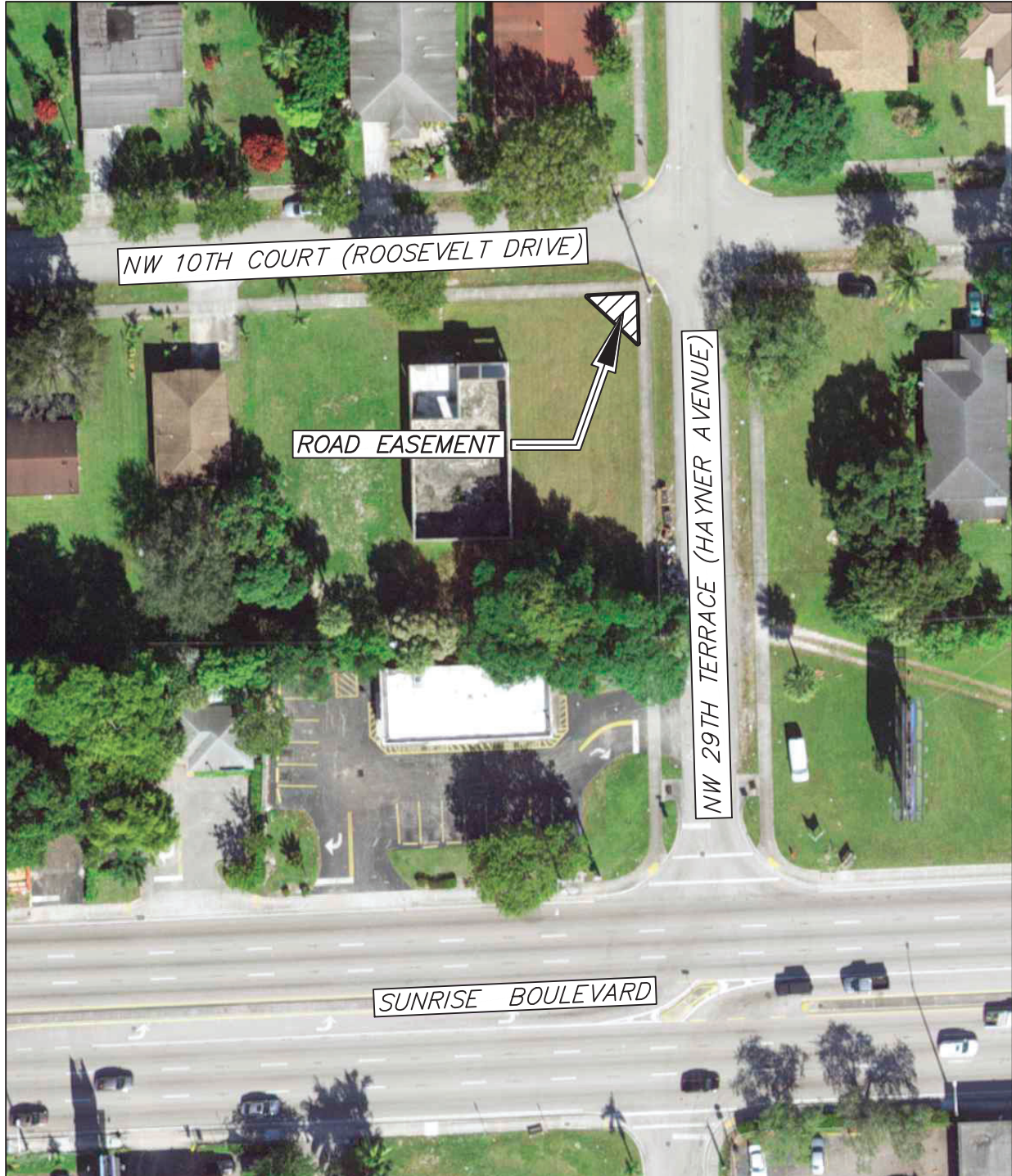


LOCATION MAP

PROJECT: DN-2020-05
FROM: M & R HOMETRUST BUILDERS LLC
TO: BROWARD COUNTY
MUNICIPALITY: BROWARD MUNICIPAL SERVICES DISTRICT
COMMISSION DISTRICT: 9

SECTION 32, TOWNSHIP 49 SOUTH, RANGE 42 EAST



SHEET 1 OF 1

Scale: Not to Scale	Drawn by: JAT	Date: 2-09-21	Checked by: CAD	Date: 2-09-21	File location: E:\RW\Location Maps\Deeds and Easements\DN-2020-05.dwg
------------------------	------------------	------------------	--------------------	------------------	--