



**AMENDED OPEN SPACE PARK MANAGEMENT PLAN**

Rev: 2 | Date: 9/14/22 | Approval Date: 10/1/22 | Approved By: Phil Thornburg, Director

**FINAL OPEN SPACE PARK MANAGEMENT PLAN  
Hortt Park (OS - 18)**



**Broward County  
Safe Parks and Land Preservation Bond**

**Prepared by  
The City of Fort Lauderdale  
(October 2010)**



**Table of Contents**

Table of Contents .....2

1. Introduction .....3

2. Purpose of the Project .....3

    2.1 Key Management Objectives .....4

    2.2 Land Use Designation and Zoning .....7

    2.3 Identification of Site and Funding Sources .....8

3. Natural and Cultural Resources .....8

    3.1 Natural Communities .....8

    3.2 Unique Geological Features .....8

    3.3 Wetlands and Water Quality .....8

    3.4 Site Disturbance and Restoration .....8

    Table 1. Potential plant species to be used in landscaping.....9

    3.5 Listed Species .....9

    Table 2. Plant species found on site .....9

    Table 3. Exotic invasive plant species identified for removal .....10

    3.6 Archaeological, Cultural, and Historical Resource Protection .....10

4. Site Developments and Improvement .....11

    4.1 Acknowledgement Sign .....11

    4.2 Existing Physical Improvements .....11

    4.3 Proposed Physical Improvements .....11

    4.4 Environmental Education Program .....12

    4.5 Permits .....12

    Table 4. Permits required or potentially required for development.....12

    4.6 Easements, Rights-of-Way, Concessions or Leases .....13

5. Management Needs .....14

    5.1 Coordinated Management .....14

    5.2 Trails and Greenways .....14

    5.3 Maintenance .....14

    Table 5. Operational plan of maintenance and monitoring activities ..... 15

    5.4 Security ..... 15

6. Cost Estimates and Funding Sources .....15

    Table 6 & 6.1 Est. costs of implementation/playground replacement cost.....16

7. Priority Schedule .....19

8. Monitoring and Reporting .....19

9. Literature Cited .....19

Appendices .....19

    Appendix A. Project Site Location and Legal Boundaries Map .....20

    Appendix B. FLEPPC List of Invasive Species ..... 27

    Appendix C. Master Site Plan, Site Disturbance & Restoration Areas .....31

    Appendix D. Proposed Playground Rendering.....32

    Appendix E. As Built Plan .....33

    Appendix F. Aerial View of Park Site .....36

    Appendix G. Florida Natural Areas Inventory (FNAI) Form ..... 37

    Appendix H. Trails and Greenways ..... 39

    Appendix I. Priority Schedule .....40

    Appendix J. Updated Priority Schedule .....41

## **1. Introduction**

The Final Open Space Management Plan for Hortic Park, Open Space Site OS-18, was developed to ensure the site will be developed in furtherance of the purposes of the Broward County Safe Parks and Land Preservation Bond Program, and in accordance with the approved Interlocal Agreement executed for the project by Broward County and the City of Fort Lauderdale.

Hortic Park (OS-18) is a 5.9-acre site located in a residential neighborhood, immediately north of the existing Hortic Park. (Appendix A – Project Site Location). The park is located in the southwest area of the City, south of Davie Boulevard, on the south side of SW 14<sup>th</sup> Court, just east of SW 18<sup>th</sup> Avenue.

The property was formerly an elementary school and is currently being used by the school board as administrative offices. The site contains existing buildings, portable buildings, parking areas and recreation areas. The City has entered in a lease agreement with the school board that allows the school board use of the site until April 2011 at which time the school board will vacate the property. The City will remove the structures and impervious surfaces. One building may remain on site to serve as a neighborhood community building. When developed, the entire site will be used for passive recreation.

Broward County, as part of the 2000 Land Preservation Bond Program, provided funding for the acquisition of the site. Proper signage recognizing the efforts of the Broward County Board of County Commissioners and funding through the Safe Parks and Land Preservation Bond will be installed.

Section 4.03a of the Broward County Resolution 2000-1230 states that property listed in the Open Space Inventory shall include “undeveloped or agricultural land which can function, if appropriately developed and managed, to optimize water recharge quality and quantity, air quality and environmental benefits of the site while providing public use.” This management plan ensures the goals and objectives of the Resolution are satisfied, expanding passive recreational opportunities for the residents of Broward County.

## **2. Purpose of the Project**

The main purpose of this project is to manage the site as a protected land, managed only for the conservation, protection, and enhancement of natural resources, and for passive outdoor recreation. The property will be developed by the City of Fort Lauderdale as a neighborhood park, incorporating the values of the Land Preservation Program in the planning, implementation, maintenance, and operation of the site.

In the initial management plan, the replacement of a playground was not included hence the purpose of this amended management plan to reflect these upgraded. The City to date have replaced the playground at Hortic Park and these improvements did not affect the permeable surfaces at the park.

## 2.1 Key Management Objectives

The following list of key management objectives have been established for the project:

1. To restore native habitats through invasive plant removal and replanting with native species.
2. To prevent development through land preservation.
3. To enhance existing local greenways by providing wildlife corridors.
4. To provide passive outdoor recreational opportunities to the public.

The Hortic Park project supports the following City of Fort Lauderdale Comprehensive Plan goals, objectives, and policies:

**GOAL 1:** Provide levels of service for Parks and Recreation facilities sufficient to meet the existing and future needs of the City of Fort Lauderdale's population.

**OBJECTIVE 1.1:** The City will provide park land and open space to meet a Level of Service Standard of 3 acres per one thousand residents. This 3-acre standard shall be comprised of a mix of park classifications with Local Facility Guidelines established in the policies for each Park Planning District.

POLICY 1.1.2: All city owned/designated park sites are to be zoned P for Parks, Recreation and Open Space and have a land use designation of Park-Open Space.

POLICY 1.1.3: The City shall continue to provide 2.0 acres of neighborhood park land for each one thousand residents in each park planning district.

POLICY 1.1.4: The City shall continue to provide 1.0 acre of community park land for each one thousand residents in each park planning district.

POLICY 1.1.5: Large Urban Parks and Special Use Facilities/Parks will continue to be provided by the City of Fort Lauderdale to meet public needs.

POLICY 1.1.6: No park land shall be diverted to other uses except in instances of overriding public interest, in which case it will be effectively replaced within the affected park planning district.

POLICY 1.1.7: The City shall provide at least 20% land area in order to accommodate the open space needs of its residential development. Such open space shall include greenways, blueways and other natural areas.

POLICY 1.1.8: In order to ensure that the allocation of park lands is equitably distributed, the City of Fort Lauderdale shall give high priority in developing its park system based on a service radius calculation.

Mini-Parks = 1/4 mile

Neighborhood Parks = 1/2 mile

Community Parks = 1 mile

Large Urban Park, and Special Use Facilities/Parks = 30 minute drive time

POLICY 1.1.9: The City of Fort Lauderdale shall continue to comply with Broward County's Park Level of Service standard of 3 acres per 1000 population.

POLICY 1.1.10: The City of Fort Lauderdale shall develop Park Planning Districts to ensure the equitable geographic distribution of park land and open space, and funding for parks.

POLICY 1.1.11: The City of Fort Lauderdale remains committed to improving the quality of life of all of its citizens.

POLICY 1.2.1: To maintain the levels of service standards identified within the Recreation and Open Space Element of the City of Fort Lauderdale's Comprehensive Plan, the City shall determine whether adequate Parks and Recreation Facilities will be available when needed to serve proposed development.

**GOAL 2:** Establish and preserve an appropriate open space system to protect public health, safety, and welfare, and assure retention of aesthetic and environmental amenities.

**OBJECTIVE 2.1:** The City shall improve its visual attractiveness as possible, both through positive measures of orderly development and beautification as well as consistent efforts to avoid, remove, or diminish the impact of unsightly features.

POLICY 2.1.1: The City's Land Development Regulations shall require adequate landscaping of public projects, as well as private development. The City's adopted Land Development Regulations will be implemented consistent with Section 163.3202 (1), F.S.

POLICY 2.1.2: The City's provision of public open spaces shall be consistent with the Goals, Objectives and Policies of related Elements of the Comprehensive Plan (Land Use, Conservation, Coastal Management, et. al.).

POLICY 2.1.3: The City shall discourage development, within or adjacent to unique natural areas, where such activity will have significant detrimental effects on the aesthetic and environmental quality of the unique natural areas.

POLICY 2.1.4: The City shall follow standard design guidelines for all recreational and open space adhering to current Natural Resource Protection Areas (NRPA) and Crime Prevention Through Environmental Design (CPTED) concepts/guidelines.

POLICY 2.1.5: The Parks Division shall utilize native plant materials where appropriate in development of new parks, redevelopment of existing sites, and at other public locations to achieve the benefits associated with such materials (lower maintenance costs, habitat provision, drought tolerance, etc.).

POLICY 2.1.6: The City shall upgrade and modernize parks through the implementation of maintenance standards and the ongoing five year Capital Improvement Program.

**GOAL 3:** Provide and maintain diverse parks, recreation facilities, and activities of high quality for all residents.

POLICY 3.1.1: The City shall continue and expand the use of cooperative agreements with public and private schools, surrounding jurisdictions nonprofit agencies, churches, and the private sector to assure facilities for active recreational opportunities year-round.

POLICY 3.1.2: The City shall allocate sufficient funds to adequately supervise and maintain existing parks and recreational facilities in order to protect the public investment.

POLICY 3.1.3: Every five years the City shall reassess the ability of existing sites and facilities to meet the changing needs of the population to be served.

POLICY 3.2.1: The City shall centrally locate new park and recreation facilities in the neighborhood area to be served whenever possible.

POLICY 4.1.4: The City shall maintain and improve the existing recreation lands and encourage the dedication of properties for recreation and open space uses through appropriate incentives.

POLICY 4.1.5: Proposed park sites, and existing park sites scheduled to be renovated, shall be evaluated as to their existing and potential environmental quality, the preservation of historical, cultural, or archeologically significant neighborhood and community park. This assessment shall include community input.

The City of Fort Lauderdale shall consider the following as park projects are undertaken, particularly projects utilizing or attempting to obtain federal and/or state grants:

1. The project's ability to maintain or improve park levels of service;
2. The protection of Endangered and Threatened Species and Species of Special Concern, including rare or threatened vegetative communities;
3. The enhancement or restoration of natural areas and shoreline ecosystems, and the removal of nuisance and/or exotic vegetation;
4. The creation or continuation of green way systems utilizing environmentally sensitive lands or designated Brownfield areas;
5. The preservation of large canopy trees;
6. The protection or improvement of groundwater quality and/or surface water quality;
7. The protection of natural resources from potential adverse impacts associated with uses or activities on adjacent lands, including a land use compatibility analysis and the provision of wetland buffers and buffer yards in the Growth Management Plan and Land Development Code. Where applicable, the City shall ensure that the environmental systems mentioned above are protected, preserved, and/or enhanced.

8. To provide for coordination between the local government and other federal, state and local agencies or nonprofit organizations in acquiring or managing natural areas or open space.

In support of the goals of the City's Comprehensive Plan as outlined above, the Parks Division shall utilize native plant materials and shall incorporate *NatureScape* practices, where appropriate, to achieve the associated benefits such as a reduction in the amount of irrigation utilized, as well as fertilizer and pesticide use.

The *NatureScape Broward* program focuses on the following nine (9) principles for "Florida Friendly" landscapes:

1. Right Plant, Right Place: Select plants that have adapted to minimal amounts of water, fertilizer, and pesticides.
2. Water Efficiently: Irrigate only when your lawn and landscape need water. Efficient watering is the key to a healthy Florida yard and reducing runoff.
3. Fertilize Appropriately: Less is often best. Over-utilization of fertilizers is hazardous to the environment. Choosing the correct combination of minerals for soil and plant needs is important.
4. Mulch: Maintain a 2-3" layer of mulch to help retain soil moisture, prevent erosion, and suppress weeds.
5. Attract Wildlife: Plants in your yard provide food, water, and shelter and help conserve Florida's diverse wildlife.
6. Control Yard Pests Responsibly: Use pesticides wisely. When improperly used, these chemicals can harm people, pets, beneficial organisms, and the environment.
7. Recycle: Compost grass clippings, leaves, and yard trimmings to return nutrients to the soil and reduce waste disposal.
8. Reduce Storm-water Runoff: Help prevent pollution from reaching waterways by reducing soil, debris, fertilizer, pesticides, and household contaminants that run off your property.
9. Protect Waterfront: Waterfront property, whether on a bay, river, canal, pond, or beach should be protected as a natural treasure.

The City shall incorporate all applicable principles into the development of the park and shall apply for either a *Backyard Wildlife Habitat* certification through the National Wildlife Federation or the *Florida Yards & Neighborhoods* certification through the University of Florida IFAS Extension within three (3) months of opening the site to the public.

## 2.2 Land Use Designation and Zoning

The site is zoned CF – Community Facility. The City's land use and zoning designations and maps will be amended to be consistent with the County land use for designation as "Recreation and Open Space."

## **2.3 Identification of Site and Funding Sources**

The site will be identified as being publicly owned and operated as a natural conservation and outdoor recreation area, acquired with Broward County Safe Parks and Land Preservation Bond Program funds.

## **3. Natural and Cultural Resources**

### **3.1 Natural Communities**

The major vegetation located on site primarily consists of the following: palms, live oak, gumbo-limbo, strangler fig, and slash pine. A table listing the plants and their species is included in Section 3.5. The site contains no animal communities.

### **3.2 Unique Geological Features**

No unique geological features of relevance are present on site.

### **3.3 Wetlands and Water Quality**

There are no surface waters and/or wetlands on or hydrologically connected to the project site. The groundwater hydrology of the project site is integrated with the surrounding storm water network.

### **3.4 Site Disturbance and Restoration**

There are no known disturbances by feral animals or any evidence of ferals on the project site. The City of Fort Lauderdale Parks Division will continue to monitor the site for signs of feral animals. If evidence of feral animals is found in the future, a plan will be developed to humanely remove them from the site and to maintain the site free of feral animals.

Disturbance of the site is limited to the invasive plant species as listed in Table 3 and as referenced by the most recent Florida Exotic Pest Plant Council (FLEPPC) list of invasive and exotic plant species. The most recent FLEPPC Invasive Species is included as Appendix B.

The City of Fort Lauderdale Parks and Recreation Department will remove all invasive and exotic plant species. Following the manual and/or mechanical removal of the exotic and invasive plant materials, the site will be replanted with native species within one year. Native vegetation shall be incorporated into the park landscape design utilizing xeriscape landscape design methods where appropriate to conserve water. At least twenty-five percent (25%) of the total project area, excluding park access infrastructures such as parking areas and entranceways, will be landscaped with native species and maintained in such a manner to ensure their viability.



**Table 1. Potential plant species to be used in landscaping**

Scientific Name	Common Name
<b>Trees</b>	
<i>Chrysophyllum oliviforme</i>	Satin leaf
<i>Simarouba glauca</i>	Paradise Tree
<i>Coccoloba diversifolia</i>	Pigeon Plum
<i>Cordia sebestena</i>	Orange Geiger
<i>Acer rubrum</i>	Red Maple
<i>Morus rubra</i>	Red Mulberry
<i>Thrinax morrisii</i>	Thrinax palm
<b>Shrubs &amp; Ground Cover</b>	
<i>Chrysobalanus icaco</i>	Cocoplum
<i>Capparis cynophallophora</i>	Jamaican Caper
<i>Callicarpa americana</i>	American Beautyberry
<i>Zamia pumila</i>	Coontie
<i>Psychotria nervosa</i>	Wild Coffee
<i>Morella cerifera</i>	Wax Myrtle

Once development is complete, the Parks and Recreation Department will prevent reinfestation of the site by the removal of the invasive and exotic plants and will ensure the viability of the area through ongoing preventative maintenance. This plan will include a program of routine mowing of the open areas to limit the introduction of invasive and exotic plants, exotic/invasive plant retreatments, and the replanting of dead plant material.

### 3.5 Listed Species

No plant or animal species, as listed by county, state and/or federal governments as endangered or threatened species are located on the project site. If future monitoring of the site reveals the presence of a listed plant or animal species, they will be reported to the Florida Natural Areas Inventory (FNAI) on FNAI forms (Appendix D).

The forms may also be assessed at the following website locations:

[http://www.fnai.org/PDF/Natural\\_communities\\_form.pdf](http://www.fnai.org/PDF/Natural_communities_form.pdf)

[http://www.fnai.org/PDF/Plant\\_form.pdf](http://www.fnai.org/PDF/Plant_form.pdf)

[http://www.fnai.org/PDF/Animal\\_form.pdf](http://www.fnai.org/PDF/Animal_form.pdf)

**Table 2. Plant species found on site**

Existing Species	Native/ Exotic
Sabal Palm/ <i>Sabal palmetto</i>	N
Live Oak/ <i>Quercus virginiana</i>	N
Areca Palm/ <i>Chrysalidocarpus lutescens</i>	E
Sea Grape/ <i>Coccoloba uvifera</i>	N

Gumbo Limbo/ <i>Bursera simaruba</i>	N
Satin leaf/ <i>Chrysophyllum oliviforme</i>	N
Paradise Tree/ <i>Simarouba glauca</i>	N
Crape Myrtle/ <i>Lagerstroemia indica</i>	E
Boston Fern/ <i>Nephrolepis exaltata</i>	N
Ixora/ <i>Ixora spp</i>	E
Virginia Creeper/ <i>Parthenocissus quinquefolia</i>	N
Strangler Fig/ <i>Ficus aurea</i>	N
Slash Pine/ <i>Pinus elliotii v. densa</i>	N
Coral Tree/ <i>Erythrina variegata v. orientalis</i>	E
Coconut Palm/ <i>Cocos nucifera</i>	E
Silk Floss Tree/ <i>Chorisia speciosa</i>	E
Dragon Tree/ <i>Dracaena spp</i>	E
Bromeliad/ genus species unknown	E
Croton/ <i>Codiaeum variegatum pictum</i>	E
False Aralia / <i>Dizygotheca elegantissima</i>	E
Mahogany/ <i>Swietenia mahagoni</i>	N
Cocoplum/ <i>Chrysobalanus icaco</i>	N
Dwarf firebush/ <i>Hamelia patens compacta</i>	N
Crown of Thorns/ <i>Euphorbia millii</i>	E
Indian Hawthorn/ <i>Rhaphiolepis indica</i>	N
Black olive (gregorywood)/ <i>Bucida buceras</i>	E
Laurel Oak/ <i>Quercus laurifolia</i>	N
Golden Dewdrop/ <i>Duranta erecta</i>	E

**Table 3. Exotic invasive plant species identified for removal**

<b>Existing Species</b>
Surinam Cherry/ <i>Eugenia uniflora</i>
Oyster Plant/ <i>Rhoeo spathacea, Tradescantia spathacea</i>
Pothos/ <i>Epipremnum aureum</i>
Sword Fern/ <i>Nephrolepis cordifolia</i>
Asparagus fern/ <i>Asparagus aethiopicus</i>
Melaleuca/ <i>Melaleuca quinquenervia</i>
Guava/ <i>Psidium guajava</i>
Ligustrum/ <i>Ligustrum lucidum</i>
Hibiscus/ <i>Hibiscus tiliaceus</i>
Lantana/ <i>Lantana camara</i>
Bowstring hemp/ <i>Sansevieria hyacinthoides</i>

### 3.6 Archaeological, Cultural, and Historical Resource Protection

There are no generally known archaeological, cultural, or historical resources of relevance on the project area. If future evaluation indicates the evidence of or the likelihood that such resources are present on, or in the project site, the City will obtain an archaeological survey of the site. The City will also immediately notify the Broward County Land Preservation Section as well as coordinate with the Florida Department of State, Division of Historic Resources (FDOS/DHR), and the Broward County Historical Commission

(BCHC) to assess the find and obtain guidance on the management of the resources. Adequate protection measures will be implemented immediately by the city to protect all such resources. The collection of artifacts or the disturbance of archaeological, cultural, or historic resources on the project site will be prohibited unless prior authorization has been obtained from the FDOS/DHR and BCHC. In addition, the management of such resources will comply with the provisions of Chapter 267, Florida Statutes, specifically Sections 267.061 (2)(a) and (b).

#### **4. Site Developments and Improvement**

##### **4.1 Acknowledgement Sign**

A temporary sign will be erected at the entrance to the site that acknowledges the partnership of the City of Fort Lauderdale and the Broward County Board of County Commissioners. The sign will state that the site was purchased with funds from the Broward County Safe Parks and Land Preservation Bond Program. The sign will be at least two feet by three feet in size and will include both City and Broward County logos.

The City will install and maintain a permanent recognition sign at the entrance of the park upon completion of the park's development and prior to the park's opening. The permanent signage will comply with the aforementioned standards.

##### **4.2 Existing Physical Improvements**

The property was formerly an elementary school and is currently being used to provide administrative office space. The site contains existing buildings, portable buildings, parking areas and recreation areas. The adjacent existing Hortt Park, located on the south end of the parcel, contains a clay baseball field, asphalt basketball court, and playground. The park is being maintained by the City of Fort Lauderdale Parks & Recreation Department.

##### **4.3 Proposed Physical Improvements**

In order to adhere to the directives as stated in Section 4.03 of Resolution 2000-1230, this project will comply with the following Broward County Standard for active recreation and impervious surfaces for lands acquired through the Land Preservation Program:

*Impervious surfaces and surfaces requiring intense fertilization and pest control, such as ballfields, shall not exceed 30% of the project area, excluding park access infrastructures such as parking areas, entranceways and restroom facilities.*

Less than thirty percent (30%) of the site will be dedicated to active recreation. Some of the amenities being proposed for the park during this phase of construction consist of replacement of playground structure, park benches, picnic tables, native plant landscaping, a drinking fountain, modifications to the existing parking lot, jogging trail, and trash cans to be placed at appropriate locations within the park. A future phase of construction may include a pavilion, community garden plots, beach volleyball court,

tennis court, and basketball half courts. As expressed by the wishes of the neighborhood, one building may remain on site to be used as a community center building.

The proposed site improvements are intended to enhance public access to and use of the park site. The site contains an existing asphalt parking lot with spaces designated for handicapped vehicles in compliance with the Americans with Disabilities Act (ADA). Modifications to the parking lot will include pervious material wherever feasible. Bicycle racks will also be included to encourage non-motorized vehicular transportation to the park.

The construction of the project will not compromise the integrity of the site nor impact native plant species. Additionally, NatureScape Broward principles will be utilized to reduce the amount of irrigation, fertilizer, and pesticides used on site. The city will apply for certification under the Florida Yards & Neighborhoods or Backyard Wildlife Habitat program once site development has been completed.

A community planning process will be completed before undertaking any physical improvements addressed in the Final Management Plan. It is noted, that according to Bond Program covenants, that any proposed modification and/or undertaking of any site alteration or physical improvement not addressed in the approved management plan requires prior County review and approval.

A map of the restoration area and proposed amendments is included as Appendix C.

#### 4.4 Environmental Education Program

If environmental educational programming is anticipated for the site, the city will install interpretive signage or kiosks to educate visitors about the natural environment. Such signage will also indicate the presence of archeological, cultural, or historical resources if they are found on site.

#### 4.5 Permits

The City of Fort Lauderdale will obtain all required permits for any work proposed on site. Any necessary permits will be obtained before the work is performed. A list of potential required permits is included in Table 4 below.

**Table 4. Permits required or potentially required for development**

Type of Permit	Regulation Entity
Environmental Resource License	Broward County Environmental Protection and Growth Management Department
Permits to work in right-of-ways & creation of road cuts & turn lanes	Broward County Public Works and Transportation Department, City of Fort Lauderdale Public Services Department,

	Florida Department of Transportation
Standard General Environmental Resource Permit	South Florida Water Management District or Florida Department of Environmental Protection
Stormwater Treatment System	Broward County Public Works and Transportation Department, City of Fort Lauderdale Public Services Department
Structural, landscaping, electrical, irrigation and zoning permits	Broward County Building Department and City of Fort Lauderdale Building Department
Surface Water Management Permit	Broward County Environmental Protection and Growth Management Department
Tree Relocation/Removal Permit	City of Fort Lauderdale Landscaping Department
Water Use Permit	South Florida Water Management District

#### 4.6 Easements, Rights-of-Way, Concessions or Leases

At present, no easements, rights-of-way, concessions or leases are associated with the site.

It is noted that no easement, concession, or lease can conflict with Article 5 of the approved Interlocal Agreement executed for this project by Broward County and the City. If the project site is to remain subject after its acquisition to any of the below listed activities or interests, the County will be given at least sixty (60) days written notice of any such activity or interest prior to the activity taking place:

- Any lease of any interest in the project site to a non-governmental person or organization.
- The operation of any concession on the project site to a non-governmental person or organization.
- Any sales contract or option to buy things attached to the project site to be severed from the project site with a non-governmental person or organization.
- Any uses of the project site by non-governmental persons other than in such person's capacity as a member of the general public.
- A management contract of the project site with a non-governmental person or organization.
- Such other activity or interest as may be specified from time to time in writing by the County to the City.

## 5. Management Needs

### 5.1 Coordinated Management

The project area is located adjacent to the existing Hortt Park site. The entire 5.9-acre site will be maintained by the City of Fort Lauderdale Parks & Recreation Department as one park.

### 5.2 Trails and Greenways



The project is located on SW 14<sup>th</sup> Court, south of the Davie Boulevard exit off of I95 and is accessible from SW 17 Ave. The park is also located a short distance from the New River. As this section of the greenway is located within a residential community (see map), the proposed site will enhance pedestrian access by providing an area for bicyclists and pedestrians to rest, picnic, and enjoy the greenway by providing expanded access to public amenities. The park is also located within a short

distance of a future proposed Broward County Greenways System priority trail and will enhance the proposed recreational trail system by closing gaps in the existing recreational trail system and providing new trailside facilities. A map of the Broward County Greenway System and the proposed future priority trail is included as Appendix E.

### 5.3 Maintenance

The site will be cleared for development and wastes or illegally dumped items on the project site will be removed.

The project will continue to be routinely monitored and maintained free of such materials through fencing and proper disposal methods. If any hazardous materials are discovered on site, the city will immediately notify the Broward County Environmental Protection and Growth Management Department.

The City of Fort Lauderdale Parks and Recreation Department will be responsible for all aspects of property maintenance including items such as mowing of the turfgrass, weeding of plant beds, maintenance of trees, removal of trash, and maintenance of the park's amenities. The City will perform regular maintenance of the project site and amenities as indicated in Table 5 below.

**Table 5. Operational plan of maintenance and monitoring activities**

<b>Time Frame</b>	<b>Activities</b>	<b>Responsible Agency</b>
Daily/Weekly as needed	Maintain public use amenities	City of Fort Lauderdale Parks & Recreation Dept
Quarterly	Monitor site aesthetics	City of Fort Lauderdale Parks & Recreation Dept
Quarterly first year/annually thereafter or as needed	Monitor and treat for invasive and exotic plants	City of Fort Lauderdale Parks & Recreation Dept
Annually or as needed	Remove vines from trees	City of Fort Lauderdale Parks & Recreation Dept
Every 5 years or as needed	Update management plan	City of Fort Lauderdale Parks & Recreation Dept

#### 5.4 Security

The City of Fort Lauderdale Police Department, as well as Parks and Recreation Department Park Rangers, will perform surveillance of the site. The City's Parks and Recreation staff will also provide regular park inspections as necessary to maintain the integrity of the park and its amenities. Parks and Recreation Department staff will also either respond to public complaints and concerns, or forward such matters to the appropriate and responsible party.

#### 6. Cost Estimates and Funding Sources

A table of the estimated costs associated with the implementation of the management plan for the project site over the five-year period is attached below.

**Table 6. Estimated costs of implementation**

<b>Activity</b>	<b>Fund</b>	<b>Cost Over 5-Year Period</b>
<b>Initial Site Clean-up &amp; Revegetation</b>		
Demolition	CIP	\$ 253,124
Fencing	CIP	\$ 30,000
Trash and debris removal	CIP	\$ 5,000
Exotic plant & vine removal	CIP	\$ 10,000
Landscaping	CIP	\$ 70,000
Sod	CIP	\$ 20,000
Irrigation	CIP	\$ 35,000
<b>Total</b>		<b>\$ 423,124</b>
<b>Site Development (Design, Construction and Installation)</b>		
Engineering fees, plans, permits, rezoning and land use amendments fees	CIP	\$ 200,000

Park signage	CIP	\$ 5,000
Trail (ADA Mulch Path)	CIP	\$ 75,000
Picnic tables (10)	CIP	\$ 9,000
Trash cans (10)	CIP	\$ 4,000
Benches (10)	CIP	\$ 7,500
Bike racks (2)	CIP	\$ 1,000
Playground expansion	CIP	\$ 50,000
Pavilion	CIP	\$ 40,000
Park lighting	CIP	\$ 60,000
Drinking fountain (2)	CIP	\$ 8,000
Fitness stations	CIP	\$ 20,000
Community garden plots	CIP	\$ 5,000
Basketball court (2 ½ courts)	CIP	\$ 30,000
Tennis court surfacing	CIP	\$ 40,000
Volleyball court	CIP	\$ 15,000
Optional Community Center	CIP	\$ 300,000
<b>Construction Total</b>		<b>\$ 869,500</b>
<b>GRAND TOTAL</b>		<b>\$ 1,292,624</b>
Ongoing Park Operating Activities		
Site security		\$ 20,000
Grounds maintenance		\$ 80,000
Maintenance supplies		\$ 30,000
<b>Total</b>		<b>\$ 130,000</b>

The playground replacement cost of \$50,000 was included in the initial plans under the CIP funding but was later removed in FY2020 in anticipation of the project being funded by the Parks Bond. However, a grant was since awarded in the amount of \$50,000 from the Florida Recreation Development Assistance Program (FRDAP) to assist in funding the total project cost for the development of a new playground at Hortt Park. Outlined below in Table 6.1 is a breakdown of the playground replacement cost.

**Table 6.1 Playground Replacement Cost**



 <b>REP SERVICES, INC.</b> <i>Experts at Play &amp; Outdoor Spaces</i> <small>Site Amenities ■ Playground Equipment ■ Safety Surfacing ■ Shade</small> <small>Phone: 407.831.3538 Fax: 866.212.8332 E-mail: sales@repservices.com</small>		CGC1508223	Page 1 of 3		
<p><b>Please mail POs, contracts and checks to:</b>                  Rep Services, Inc.                  165 W. Jessup Ave.                  Longwood, FL 32750-4146</p>					
<b>Proposed To:</b> City of Fort Lauderdale Public Services Department, Engineering Division 100 N Andrews Ave 5th Floor <b>Attn:</b> Thomas White	<b>Ship To:</b> TBD at a later date <b>Attn:</b>	<b>Bill To:</b> City of Fort Lauderdale Public Services Department, Engineering Division 100 N Andrews Ave 5th Floor <b>Attn:</b> Thomas White			
<b>Project No:</b> 17108 <b>Proposal No:</b> 17108.05 <b>Proposal Date:</b> 2/24/2020	<b>Project Name:</b> City of Fort Lauderdale-Hortt Park <b>Proposal Name:</b> Hortt Park <b>Proposal Expires:</b> 7/1/2020	<b>Project Contact:</b> Thomas White <b>Project Location:</b> 1700 SW 14th Avenue Fort Lauderdale, FL 33315 Project County: Broward			
<b>For Questions Contact:</b> Jacqui Rohrborn ☎ 407-853-3560 ✉ jacqui@repservices.com <b>Sales Consultant:</b> Debbie Levine ☎ 561-353-0980 ✉ debbie@repservices.com <b>Opt/Rev:</b> B/3 <b>Printed:</b> 3/23/20 - JR					
<b>Vendor:</b> Landscape Structures		<b>Proj Drawings:</b> 17108-1-2			
<b>Class</b>	<b>Part No</b>	<b>Qty</b>	<b>Description</b>	<b>Unit Price</b>	<b>Ext Price</b>
Miscellaneous	TY	1 EA	THANK YOU FOR THE OPPORTUNITY TO PRESENT LSI PRODUCTS	0.00	0.00
<b>Play Area 2-5</b>					
Ages 2-5 Yrs	PE176136A-001	1 EA	PlaySense Design 40 DB Only	27,245.00	27,245.00
Kids In Motion	IP148636A-001	1 EA	Seesaw 2-Seats DB	2,620.00	2,620.00
	IP152178A-002	1 EA	Saddle Spinner DB 12"Height	950.00	950.00
	IP173591A-001	1 EA	OmniSpin Spinner Surface Mount	7,625.00	7,625.00
Signs	IP182503A-001	1 EA	Welcome Sign (LSI Provided) Ages 2-5 years Direct Bury	0.00	0.00
Swings	IP176038G-001	2 EA	Full Bucket Seat ProGuard Chains for Toddler Swing	320.00	640.00
	IP177336A-001	1 EA	Toddler Swing Frame DB Only	1,025.00	1,025.00
<b>Play Area 2-5 Total:</b>					<b>\$40,105.00</b>
<b>Play Area 5-12</b>					
Kids In Motion	IP121875A-001	1 EA	18' Track Ride w/Alum Posts DB Only	4,100.00	4,100.00
Signs	IP182503C-001	1 EA	Welcome Sign (LSI Provided) Ages 5-12 years Direct Bury	0.00	0.00
Structures	IP254626A-001	1 EA	Super Netplex 12' Tower	71,715.00	71,715.00
Swings	IP174018A-001	2 EA	Belt Seat ProGuard Chains for 8' Beam Height	120.00	240.00
	IP221292A-001	1 EA	5' Arch Swing Frame 8' Beam Height Only	2,670.00	2,670.00
<b>Play Area 5-12 Total:</b>					<b>\$78,725.00</b>
				<b>Product Subtotal:</b>	<b>\$118,830.00</b>
				<b>Discount per the Clay County Contract #18/19-2</b>	<b>10.00% (\$11,883.00)</b>
				<b>Discounted Product Total:</b>	<b>\$106,947.00</b>
				<b>Signed &amp; Sealed Engineering:</b>	<b>\$2,700.00</b>
<b>Freight: Prepaid Ship Method: Best Way FOB: Destination Weight: 18,543 lbs Freight Charge:</b>				<b>\$11,180.00</b>	
				<b>Landscape Structures Total:</b>	<b>\$120,827.00</b>
<b>Vendor:</b> Vitriturf		<b>Proj Drawings:</b> 17108-1-1		572357	
<b>Class</b>	<b>Part No</b>	<b>Qty</b>	<b>Description</b>	<b>Unit Price</b>	<b>Ext Price</b>
Miscellaneous	DUMPSTER	1 EA	Dumpster provided by manufacturer	635.00	635.00
Surfacing	HORTT PARK-PIP	7,155 EA	EPDM Poured in Place Safety Surfacing, 50% Black/50% Standard Color Blend with varying thicknesses (3.5"-5.5") to meet the (8'-12') Critical Fall Heights. Includes 380 LF of tumdown	17.00	121,635.00
				<b>Product Subtotal:</b>	<b>\$122,270.00</b>
				<b>Discount per the Clay County Contract #18/19-2</b>	<b>2.00% (\$2,445.40)</b>
				<b>Discounted Product Total:</b>	<b>\$119,824.60</b>
<b>Freight: Prepaid Ship Method: Best Way FOB: Destination Freight Charge:</b>				<b>Included</b>	
				<b>Vitriturf Total:</b>	<b>\$119,824.60</b>
<b>Vendor:</b> RSI Installer				572734	
<b>Item</b>	<b>Qty</b>	<b>Description</b>		<b>Unit Price</b>	<b>Ext Price</b>

<b>Proposal No:</b> 17108.05	<b>Project Name:</b> City of Fort Lauderdale-Hortt Park	<b>Proposal Date:</b> 2/24/2020	Page 2 of 3	
STORAGE	1 EA	Storage Container for (1) month during installation	725.00	725.00
TRASH REMOVAL	1 LT	Trash removal from jobsite	1,700.00	1,700.00
DEMO	1 LT	Demolition of existing play equipment and surfacing	4,210.00	4,210.00
SITE WORK	7,264 SF	Preparing site for installation of equipment and safety surfacing.	1.65	11,985.60
INS-LSI	1 LT	Equipment Installation - Landscape Structures drawing 17108-1-1	33,970.00	33,970.00
INS-SURFACING SUBBASE	7,264 SF	Provide & Install #57 stone sub-base	2.65	19,249.60
<b>RSI Installer Total:</b>				\$71,840.20

**General Terms of Sale and Proposal Summary**

Net 30	<b>Product:</b>	\$229,471.60
	<b>Installation:</b>	\$71,840.20
	<b>Freight:</b>	\$11,180.00
	<b>Proposal Total:</b>	\$312,491.80

**Notes**

The Clay County Contract #18/19-2 provides a 2% discount on LSI product. The maximum price for installation is 50% of the product price. (Installation does not include site prep, slabs, footings or engineering).

The Clay County Contract #18/19-2 provides a 2% discount on VitriTurf product. Installation is included in the price of the product.

**Basis of Proposal**

Our proposal is based upon our discussion and Plan Sheet L-1, dated 10/11/2019

**Estimated project completion schedule**

(This schedule starts when all needed information to direct engineering has been gathered.)

- 4 Weeks: Engineering
- 4 Weeks+/- Permitting, finishes, etc..
- 4 Weeks Longest manufacturing lead time. (Typical for coholding.)
- 1 Week Shipping
- 5 Weeks Installation of equipment and surfacing
- 18 Weeks TOTAL WEEKS

Note that RSI is committed to do all it can to meet the needs of your project.

**To be provided by the customer, as applicable:**

- Permit Fees assessed by the Building Dept. not included with Rep Services Scope of Work.
- Site Plan or Survey, signed and sealed for Building Dept to process permits
- Soils testing - If applicable and will need to be supplied by the City
- Tree Survey - If applicable and will need to be supplied by the City

**Scope of Proposal**

Please note the vendor requirements itemized below.

**Landscape Structures:**

When placing an order, please select colors from those shown on pages 262-269 of the catalog. Protective surfacing material must have a critical height value to meet the maximum fall height for the equipment and be accessible (ref. AS1M I-3101).

**Vitriturf Poured in Place Surfacing:**

This quotation is for material, freight and installation.

Owner or Owner's contractor is responsible for:

- Accuracy of project dimensions and product quantities prior to ordering. Please specify product depth and color when ordering.

**Installation:**

- **Installer Providing a locked security storage to prevent theft and/or vandalism.**
- Unless otherwise noted, the following items are to be **PROVIDED BY CUSTOMER** prior to installation:

Installation Charges on this proposal are based on NO UNFORESEEN conditions in the area, above or below the surface. If unforeseen conditions arise, the installation charges will change to reflect additional costs associated with dealing with those circumstances. Examples of this include, but are not limited to: site not ready upon installer's arrival, underground utilities, or difficulties with footers due to coral rock or ground water in the holes.

## **7. Priority Schedule**

A priority schedule as developed for the implementation, development, and management of the activities of this management plan is provided in Appendix I.

## **8. Monitoring and Reporting**

The site will be regularly monitored for compliance with the management plan. An annual report detailing the progress of the project and success of management plan activities will be submitted to the Broward County Land Preservation Section as required. The annual report will include an update on the status of the project site, as well as discussion on the progress made during the year toward meeting the goals in the priority schedule of the management plan.

## **9. Literature Cited**

No relevant documents were used or cited in the preparation of this management plan.

### **Appendices**

Appendix A. Project Site Location and Legal Boundaries Map

Appendix B. FLEPPC List of Invasive Species

Appendix C. Master Site Plan, Site Disturbance & Restoration Areas

Appendix D. Proposed Playground Rendering

Appendix E. As Built Plan

Appendix F. Aerial View of Park Site

Appendix G. Florida Natural Areas Inventory (FNAI) Form

Appendix H. Trails and Greenways

Appendix I. Priority Schedule

Appendix I. Updated Priority Schedule

**Appendix A.**      **Project Site Location and Legal Boundaries Map**



**Legal  
Description**

A portion of Tract "A" of the Plat entitled HORTT ELEMENTARY SCHOOL SITE, as recorded in Plat Book 47, Page 31 of the Public Records of Broward County, Florida and being more particularly described as follows:

Commencing at the Southeast corner of said Tract "A"; thence North 10°21'15" East along the East line of said Tract "A" for a distance of 370.00 feet to the Point of Beginning; thence North 81°41'42" West for a distance of 118.00 feet; thence South 18°09'13" West for a distance of 150.00 feet; thence due West for a distance of 250.00 feet to a point on the West line of said Tract "A"; thence due North along the West line of said Tract "A" for a distance of 410.41 feet to a point of curvature with a 25 foot radius curve concave to the Southeast; thence Northerly and Easterly along the arc of said curve through a central angle of 90°39'15" for an arc distance of 38.56 feet; thence South 89°20'45" East along the North line of said Tract "A" for a distance of 246.91 feet to a point of curvature with a 25 foot radius curve concave to the Southwest; thence Easterly and Southerly along the arc of said curve through a central angle of 99°42'00" for an arc distance of 43.50 feet; thence South 10°21'15" West for a distance of 32.06 feet; thence South 79°38'45" East for a distance of 165.00 feet to a point on the East line of said Tract "A" (the preceding three courses being coincident with the North line of said Tract "A"); thence South 10°21'15" West along the East line of said Tract "A" for a distance of 220.00 feet to the Point of Beginning.

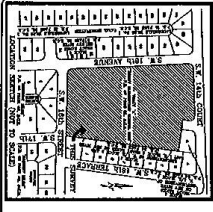
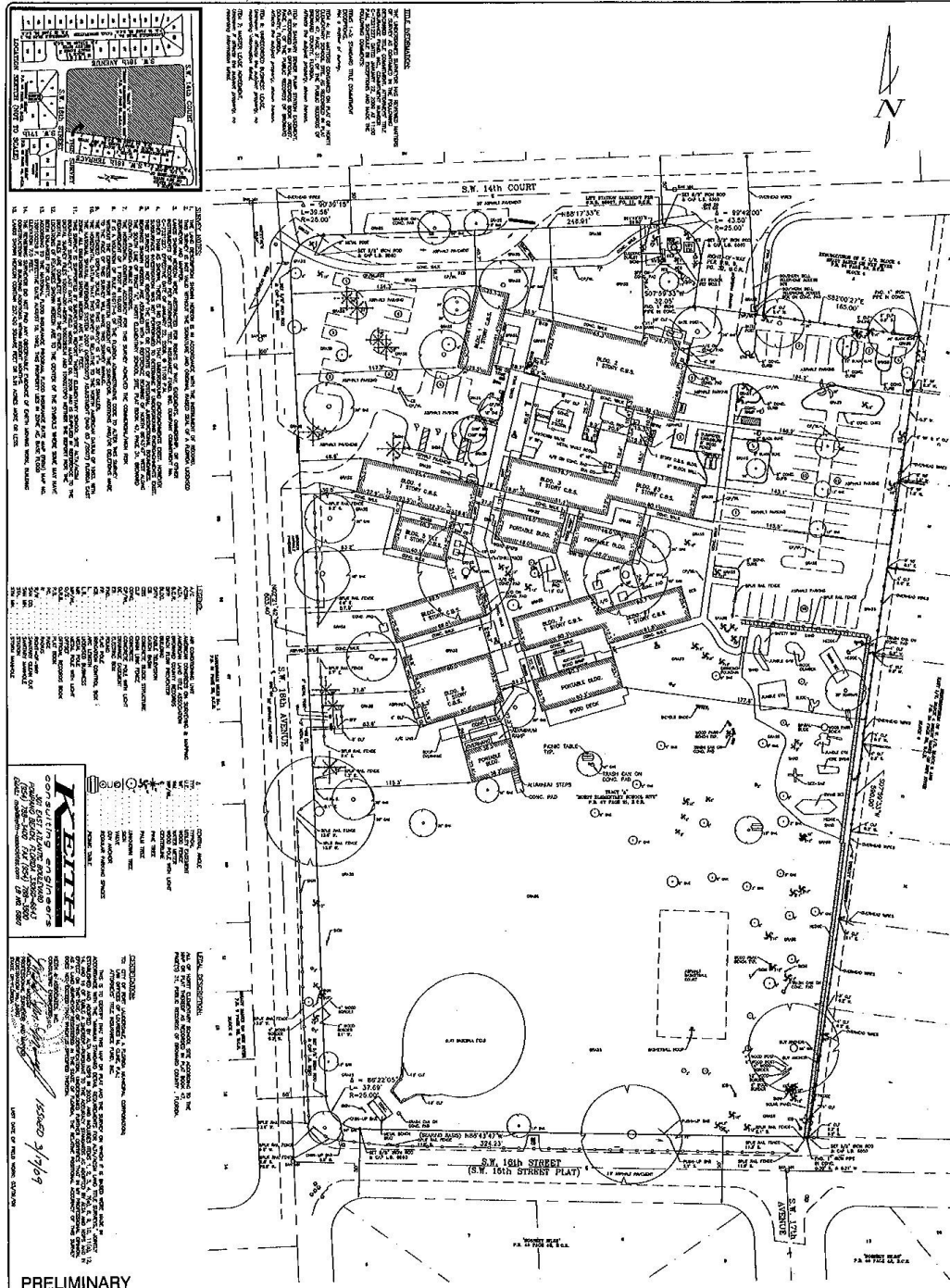
Said lands situate, lying and being in the City of Fort Lauderdale, Broward County, Florida and containing 155,870 square feet (3.5783 acres) more or less.

**TOGETHER WITH:**

A portion of Tract "A" of the Plat entitled HORTT ELEMENTARY SCHOOL SITE, as recorded in Plat Book 47, Page 31 of the Public Records of Broward County, Florida and being more particularly described as follows:

Beginning at the Southeast corner of said Tract "A"; thence North 86°22'05" West along the South line of said Tract "A" for a distance of 324.23 feet to a point of curvature with a 25 foot radius curve concave to the Northeast; thence Westerly and Northwesterly along the arc of said curve through a central angle of 86°22'05" for an arc distance of 37.69 feet; thence due North along the West line of said Tract "A" for a distance of 193.00 feet; thence due East for a distance of 250.00 feet; thence North 18°09'13" East for a distance of 150.00 feet; thence South 81°41'42" East for a distance of 118.00 feet to a point on the East line of said Tract "A"; thence South 10°21'15" West along the East line of said Tract "A" for a distance of 370.00 feet to the Point of Beginning.

Site Survey



THIS SURVEY WAS CONDUCTED IN ACCORDANCE WITH THE SURVEYING ACT OF 1935, AS AMENDED, AND THE RULES AND REGULATIONS OF THE BOARD OF SURVEYING AND MAPPING, STATE OF FLORIDA. THE SURVEYOR HAS REVIEWED THE RECORDS OF THE PUBLIC WORKS DEPARTMENT OF THE CITY OF FORT LAUDERDALE AND HAS FOUND THAT THE SAME ARE IN ACCORDANCE WITH THE SURVEYING ACT OF 1935, AS AMENDED, AND THE RULES AND REGULATIONS OF THE BOARD OF SURVEYING AND MAPPING, STATE OF FLORIDA.

THE SURVEYOR HAS REVIEWED THE RECORDS OF THE PUBLIC WORKS DEPARTMENT OF THE CITY OF FORT LAUDERDALE AND HAS FOUND THAT THE SAME ARE IN ACCORDANCE WITH THE SURVEYING ACT OF 1935, AS AMENDED, AND THE RULES AND REGULATIONS OF THE BOARD OF SURVEYING AND MAPPING, STATE OF FLORIDA.

**REVISIONS**

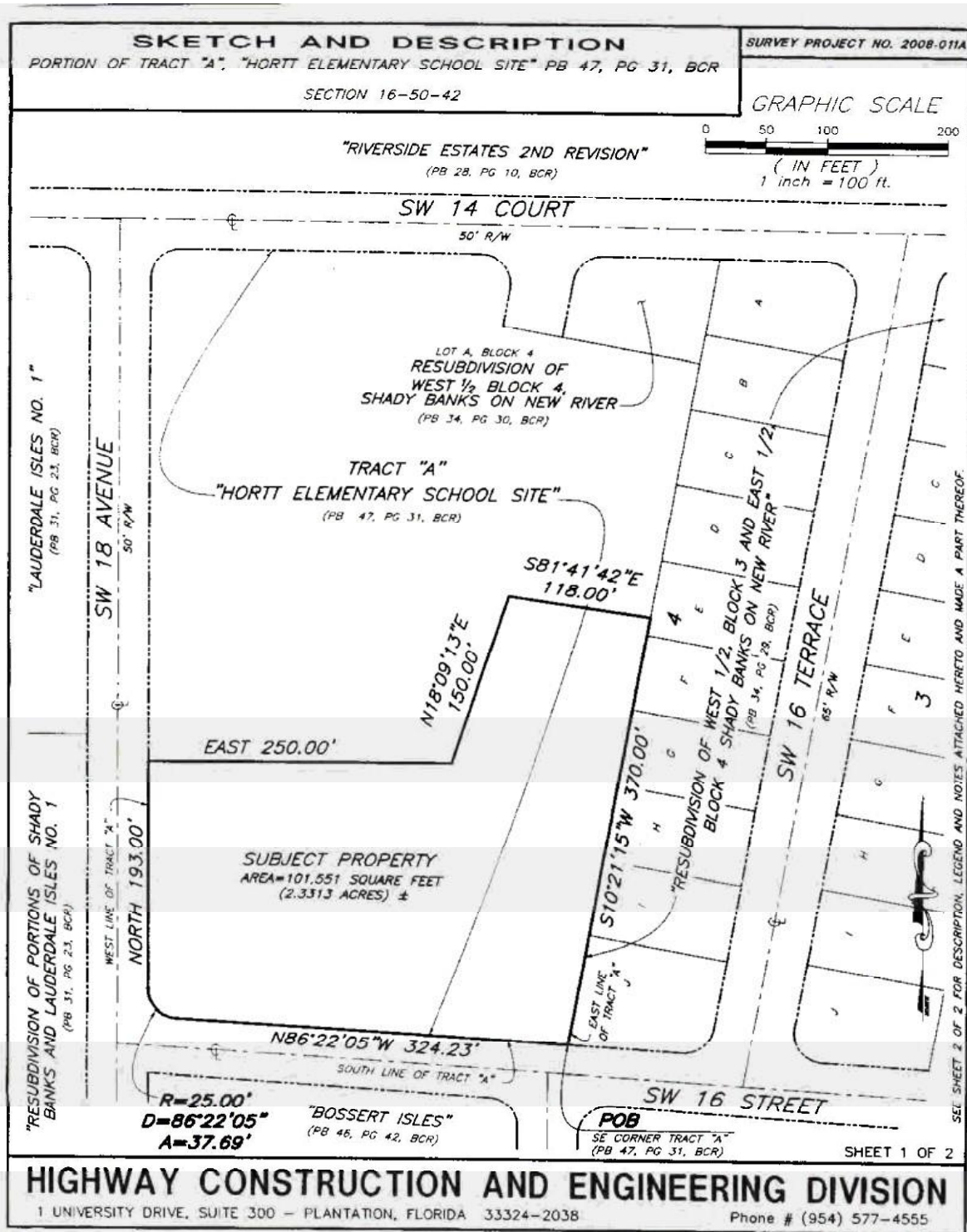
NO.	DATE	BY	DESCRIPTION

**PRELIMINARY**

DATE: 11/14/09

PROJECT # P10602  
HORTT ELEMENTARY SCHOOL SITE  
ALTA/ACSM BOUNDARY SURVEY  
1700 S.W. 14th COURT  
FORT LAUDERDALE, FLORIDA

<p>SCALE: 1" = 10'</p>	<p>PROJECT # P10602 HORTT ELEMENTARY SCHOOL SITE ALTA/ACSM BOUNDARY SURVEY 1700 S.W. 14th COURT FORT LAUDERDALE, FLORIDA</p>	<p>REVISIONS</p> <table border="1"> <thead> <tr> <th>NO.</th> <th>DATE</th> <th>BY</th> <th>DESCRIPTION</th> </tr> </thead> <tbody> <tr> <td> </td> <td> </td> <td> </td> <td> </td> </tr> <tr> <td> </td> <td> </td> <td> </td> <td> </td> </tr> <tr> <td> </td> <td> </td> <td> </td> <td> </td> </tr> <tr> <td> </td> <td> </td> <td> </td> <td> </td> </tr> </tbody> </table>			NO.	DATE	BY	DESCRIPTION																	<p><b>CITY OF FORT LAUDERDALE</b> PUBLIC WORKS DEPARTMENT ENGINEERING &amp; ARCHITECTURE 100 North Andrews Avenue, Fort Lauderdale, Florida 33301</p>	<p>DATE: 11/14/09</p>
		NO.	DATE	BY	DESCRIPTION																					
<p>SCALE: 1" = 10'</p>	<p>FIELD BOOK: 301</p>																									



**HIGHWAY CONSTRUCTION AND ENGINEERING DIVISION**

1 UNIVERSITY DRIVE, SUITE 300 - PLANTATION, FLORIDA 33324-2038

Phone # (954) 577-4555

**SKETCH AND DESCRIPTION**

PORTION OF TRACT "A", "HORTI ELEMENTARY SCHOOL SITE" PB 47, PG 31, BCR  
SECTION 16-50-42

SURVEY PROJECT NO. 2008-011A

**LEGEND**

- |                           |  |                    |
|---------------------------|--|--------------------|
| ⊙ = CENTERLINE            | BCR = BROWARD COUNTY RECORDS           | R/W = RIGHT-OF-WAY |
| POB = POINT OF BEGINNING  | PSM = PROFESSIONAL SURVEYOR AND MAPPER | PB = PLAT BOOK     |
| POC = POINT OF COMMENCING |  | PG = PAGE          |

**DESCRIPTION**

A PORTION OF TRACT "A" OF THE PLAT ENTITLED "HORTI ELEMENTARY SCHOOL SITE" AS RECORDED IN PLAT BOOK 47, PAGE 31 OF THE PUBLIC RECORDS OF BROWARD COUNTY FLORIDA AND BEING MORE PARTICULARLY DESCRIBED AS FOLLOWS:

BEGINNING AT THE SOUTHEAST CORNER OF SAID TRACT "A"; THENCE NORTH 86° 22'05" WEST ALONG THE SOUTH LINE OF SAID TRACT "A" FOR A DISTANCE OF 324.23 FEET TO A POINT OF CURVATURE WITH A 25 FOOT RADIUS CURVE CONCAVE TO THE NORTHEAST; THENCE WESTERLY AND NORTHWESTERLY ALONG THE ARC OF SAID CURVE THROUGH A CENTRAL ANGLE OF 86° 22'05" FOR AN ARC DISTANCE OF 37.69 FEET; THENCE DUE NORTH ALONG THE WEST LINE OF SAID TRACT "A" FOR A DISTANCE OF 193.00 FEET; THENCE DUE EAST FOR A DISTANCE OF 250.00 FEET; THENCE NORTH 18°09'13" EAST FOR A DISTANCE OF 150.00 FEET; THENCE SOUTH 81°41'42" EAST FOR A DISTANCE OF 118.00 FEET TO A POINT ON THE EAST LINE OF SAID TRACT "A"; THENCE SOUTH 10° 21'15" WEST ALONG THE EAST LINE OF SAID TRACT "A" FOR A DISTANCE OF 370.00 FEET TO THE POINT OF BEGINNING.

SAID LANDS SITUATE, LYING AND BEING IN THE CITY OF FORT LAUDERDALE, BROWARD COUNTY, FLORIDA AND CONTAINING 101,551 SQUARE FEET (2.3313 ACRES) MORE OR LESS.

**SURVEY NOTES**

- 1) THE "DESCRIPTION" SHOWN HEREON WAS PREPARED BY THE REVIEWING SURVEYOR BASED UPON DIRECTION FROM THE BROWARD COUNTY REAL PROPERTY SECTION.
- 2) THE BEARINGS REFERENCED HEREON ARE BASED ON ASSUMED MERIDIAN. THE WEST LINE OF TRACT A OF THE PLAT ENTITLED "HORTI ELEMENTARY SCHOOL SITE", AS RECORDED IN PLAT BOOK 47, PAGE 31 OF THE PUBLIC RECORDS OF BROWARD COUNTY, FLORIDA IS ASSUMED TO BEAR DUE NORTH.
- 3) SOURCES OF INFORMATION USED IN THE PREPARATION OF THIS SKETCH AND DESCRIPTION ARE AS FOLLOWS:
  - A) THE PLAT OF "HORTI ELEMENTARY SCHOOL SITE" AS RECORDED IN PLAT BOOK 47, PAGE 31 OF THE PUBLIC RECORDS OF BROWARD COUNTY, FLORIDA.
  - B) THE PLAT OF "RESUBDIVISION OF WEST 1/2 BLOCK 3 AND EAST 1/2 BLOCK 4 SHADY BANKS ON NEW RIVER" AS RECORDED IN PLAT BOOK 34, PAGE 29 OF THE PUBLIC RECORDS OF BROWARD COUNTY, FLORIDA.
  - C) THE PLAT OF "RESUBDIVISION OF WEST 1/2 BLOCK 4 SHADY BANKS ON NEW RIVER" AS RECORDED IN PLAT BOOK 34, PAGE 20 OF THE PUBLIC RECORDS OF BROWARD COUNTY, FLORIDA.
  - D) THE PLAT OF "RESUBDIVISION OF BLOCKS 5, 8, 9, 10, 11, 12 & 13 SHADY BANKS ON NEW RIVER" AS RECORDED IN PLAT BOOK 40, PAGE 26 OF THE PUBLIC RECORDS OF BROWARD COUNTY, FLORIDA.
  - E) THE PLAT OF "BOSSERT ISLES" AS RECORDED IN PLAT BOOK 46, PAGE 42 OF THE PUBLIC RECORDS OF BROWARD COUNTY, FLORIDA.
  - F) THE PLAT OF "LAUDERDALE ISLES NO. 1" AS RECORDED IN PLAT BOOK 31, PAGE 23 OF THE PUBLIC RECORDS OF BROWARD COUNTY, FLORIDA.
  - G) THE PLAT OF "RESUBDIVISION OF PORTIONS OF SHADY BANKS AND LAUDERDALE ISLES NO. 1" AS RECORDED IN PLAT BOOK 33, PAGE 13 OF THE PUBLIC RECORDS OF BROWARD COUNTY, FLORIDA.

SEE SHEET 1 OF 2 FOR SKETCH OF DESCRIPTION ATTACHED HERETO AND MADE A PART THEREOF.

SHEET 2 OF 2

**CERTIFICATE**

THIS IS TO CERTIFY THAT THE SKETCH SHOWN HEREON AND THE ATTACHED DESCRIPTION ARE ACCURATE AND CORRECT TO THE BEST OF MY KNOWLEDGE AND BELIEF AND DOES NOT REPRESENT A FIELD SURVEY. I FURTHER CERTIFY THAT THIS SKETCH AND DESCRIPTION MEETS THE MINIMUM TECHNICAL STANDARDS SET FORTH UNDER RULE 61G17-6 FLORIDA ADMINISTRATIVE CODE PURSUANT TO CHAPTER 472.027 FLORIDA STATUTES.

NOT VALID WITHOUT THE SIGNATURE AND THE RAISED SEAL OF A FLORIDA LICENSED SURVEYOR AND MAPPER

*Eric B. Augusto* 1/16/08  
PROFESSIONAL SURVEYOR AND MAPPER #5695, STATE OF FLORIDA  
ERIC B AUGUSTO BROWARD COUNTY SURVEYOR

DATE OF SKETCH 11-20-07	DRAWN BY SY	CHECKED BY EBA	MANAGER EBA
----------------------------	----------------	-------------------	----------------

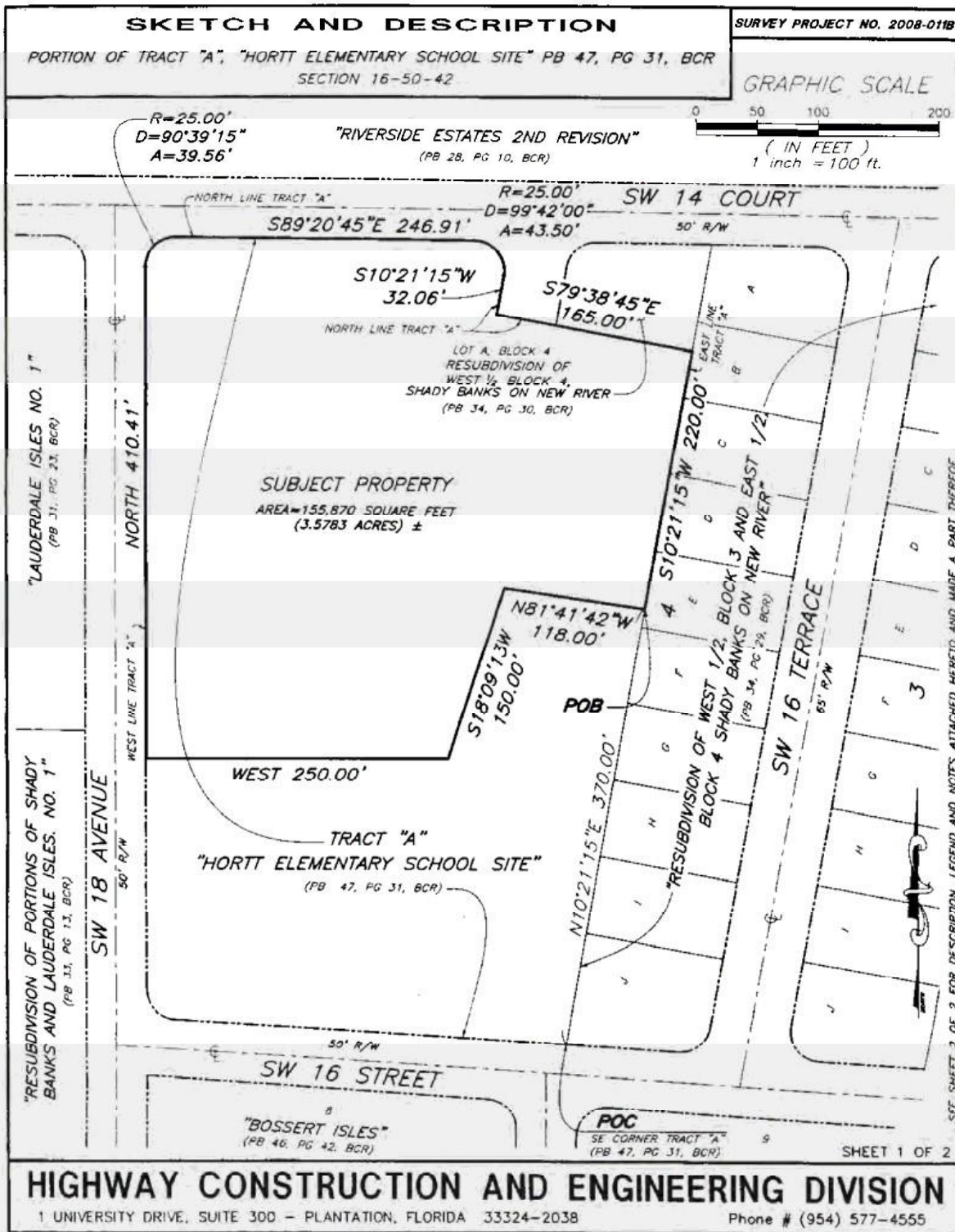
**HIGHWAY CONSTRUCTION AND ENGINEERING DIVISION**


1 UNIVERSITY DRIVE, SUITE 300 - PLANTATION, FLORIDA 33324-2038

Phone # (954) 577-4555

SKETCH NO. 2008-011.DWG





<b>SKETCH AND DESCRIPTION</b>		SURVEY PROJECT NO. 2008-0118									
PORTION OF TRACT "A", "HORTI ELEMENTARY SCHOOL SITE" PB 47, PG 31, BCR SECTION 16-50-42											
<b>LEGEND</b> <table style="width: 100%; border: none;"> <tr> <td style="width: 33%;">☉ = CENTERLINE</td> <td style="width: 33%;">BCR = BROWARD COUNTY RECORDS</td> <td style="width: 33%;">R/W = RIGHT-OF-WAY</td> </tr> <tr> <td>PCB = POINT OF BEGINNING</td> <td>PSM = PROFESSIONAL SURVEYOR AND MAPPER</td> <td>PB = PLAT BOOK</td> </tr> <tr> <td>POC = POINT OF COMMENCING</td> <td></td> <td>PG = PAGE</td> </tr> </table>			☉ = CENTERLINE	BCR = BROWARD COUNTY RECORDS	R/W = RIGHT-OF-WAY	PCB = POINT OF BEGINNING	PSM = PROFESSIONAL SURVEYOR AND MAPPER	PB = PLAT BOOK	POC = POINT OF COMMENCING		PG = PAGE
☉ = CENTERLINE	BCR = BROWARD COUNTY RECORDS	R/W = RIGHT-OF-WAY									
PCB = POINT OF BEGINNING	PSM = PROFESSIONAL SURVEYOR AND MAPPER	PB = PLAT BOOK									
POC = POINT OF COMMENCING		PG = PAGE									
<b>DESCRIPTION</b> A PORTION OF TRACT "A" OF THE PLAT ENTITLED "HORTI ELEMENTARY SCHOOL SITE" AS RECORDED IN PLAT BOOK 47, PAGE 31 OF THE PUBLIC RECORDS OF BROWARD COUNTY FLORIDA AND BEING MORE PARTICULARLY DESCRIBED AS FOLLOWS:  COMMENCING AT THE SOUTHEAST CORNER OF SAID TRACT "A", THENCE NORTH 10°21'15"EAST ALONG THE EAST LINE OF SAID TRACT "A" FOR A DISTANCE OF 370.00 FEET TO THE POINT OF BEGINNING; THENCE NORTH 81°41'42" WEST FOR A DISTANCE OF 118.00 FEET; THENCE SOUTH 18°09'13" WEST FOR A DISTANCE OF 150.00 FEET; THENCE DUE WEST FOR A DISTANCE OF 250.00 FEET TO A POINT ON THE WEST LINE OF SAID TRACT "A"; THENCE DUE NORTH ALONG THE WEST LINE OF SAID TRACT "A" FOR A DISTANCE OF 410.41 FEET TO A POINT OF CURVATURE WITH A 25 FOOT RADIUS CURVE CONCAVE TO THE SOUTHEAST; THENCE NORTHERLY AND EASTERLY ALONG THE ARC OF SAID CURVE THROUGH A CENTRAL ANGLE OF 90°39'15" FOR AN ARC DISTANCE OF 39.56 FEET; THENCE SOUTH 89°20'45" EAST ALONG THE NORTH LINE OF SAID TRACT "A" FOR A DISTANCE OF 246.91 FEET TO A POINT OF CURVATURE WITH A 25 FOOT RADIUS CURVE CONCAVE TO THE SOUTHWEST; THENCE EASTERLY AND SOUTHERLY ALONG THE ARC OF SAID CURVE THROUGH A CENTRAL ANGLE OF 99°42'00" FOR AN ARC DISTANCE OF 43.50 FEET; THENCE SOUTH 10°21'15" WEST FOR A DISTANCE OF 32.06 FEET; THENCE SOUTH 79°38'45" EAST FOR A DISTANCE OF 165.00 FEET TO A POINT ON THE EAST LINE OF SAID TRACT "A"; (THE PRECEEDING THREE COURSES BEING COINCIDENT WITH THE NORTH LINE OF SAID TRACT "A"); THENCE SOUTH 10°21'15" WEST ALONG THE EAST LINE OF SAID TRACT "A" FOR A DISTANCE OF 220.00 FEET TO THE POINT OF BEGINNING.  SAID LANDS SITUATE, LYING AND BEING IN THE CITY OF FORT LAUDERDALE, BROWARD COUNTY, FLORIDA AND CONTAINING 155,870 SQUARE FEET (3.5783 ACRES) MORE OR LESS.											
<b>SURVEY NOTES</b> 1) THE "DESCRIPTION" SHOWN HEREON WAS PREPARED BY THE REVIEWING SURVEYOR BASED UPON DIRECTION FROM THE BROWARD COUNTY REAL PROPERTY SECTION. 2) THE BEARINGS REFERENCED HEREON ARE BASED ON ASSUMED MERIDIAN. THE WEST LINE OF TRACT A OF THE PLAT ENTITLED "HORTI ELEMENTARY SCHOOL SITE", AS RECORDED IN PLAT BOOK 47, PAGE 31 OF THE PUBLIC RECORDS OF BROWARD COUNTY, FLORIDA IS ASSUMED TO BEAR DUE NORTH. 3) SOURCES OF INFORMATION USED IN THE PREPARATION OF THIS SKETCH AND DESCRIPTION ARE AS FOLLOWS: A) THE PLAT OF "HORTI ELEMENTARY SCHOOL SITE" AS RECORDED IN PLAT BOOK 47, PAGE 31 OF THE PUBLIC RECORDS OF BROWARD COUNTY, FLORIDA. B) THE PLAT OF "RESUBDIVISION OF WEST ½, BLOCK 3 AND EAST ½, BLOCK 4 SHADY BANKS ON NEW RIVER" AS RECORDED IN PLAT BOOK 34, PAGE 29 OF THE PUBLIC RECORDS OF BROWARD COUNTY, FLORIDA. C) THE PLAT OF "RESUBDIVISION OF WEST ½ BLOCK 4 SHADY BANKS ON NEW RIVER" AS RECORDED IN PLAT BOOK 34, PAGE 20 OF THE PUBLIC RECORDS OF BROWARD COUNTY, FLORIDA. D) THE PLAT OF "RESUBDIVISION OF BLOCKS 5, 8, 9, 10, 11, 12 & 13 SHADY BANKS ON NEW RIVER" AS RECORDED IN PLAT BOOK 40, PAGE 26 OF THE PUBLIC RECORDS OF BROWARD COUNTY, FLORIDA. E) THE PLAT OF "BOSSERT ISLES" AS RECORDED IN PLAT BOOK 46, PAGE 42 OF THE PUBLIC RECORDS OF BROWARD COUNTY, FLORIDA. F) THE PLAT OF "LAUDERDALE ISLES NO. 1" AS RECORDED IN PLAT BOOK 31, PAGE 23 OF THE PUBLIC RECORDS OF BROWARD COUNTY, FLORIDA. G) THE PLAT OF "RESUBDIVISION OF PORTIONS OF SHADY BANKS AND LAUDERDALE ISLES NO. 1" AS RECORDED IN PLAT BOOK 33, PAGE 13 OF THE PUBLIC RECORDS OF BROWARD COUNTY, FLORIDA.  SEE SHEET 1 OF 2 FOR SKETCH OF DESCRIPTION ATTACHED HERETO AND MADE A PART THEREOF.											
<b>CERTIFICATE</b> THIS IS TO CERTIFY THAT THE SKETCH SHOWN HEREON AND THE ATTACHED DESCRIPTION ARE ACCURATE AND CORRECT TO THE BEST OF MY KNOWLEDGE AND BELIEF AND DOES NOT REPRESENT A FIELD SURVEY. I FURTHER CERTIFY THAT THIS SKETCH AND DESCRIPTION MEETS THE MINIMUM TECHNICAL STANDARDS SET FORTH UNDER RULE 61G17-6 FLORIDA ADMINISTRATIVE CODE PURSUANT TO CHAPTER 472.027 FLORIDA STATUTES.		SHEET 2 OF 2 SKETCH NO. 2008-0118.DWG									
NOT VALID WITHOUT THE SIGNATURE AND THE RAISED SEAL OF A FLORIDA LICENSED SURVEYOR AND MAPPER	 PROFESSIONAL SURVEYOR AND MAPPER #5695, STATE OF FLORIDA ERIC B. AUGUSTO	1/16/08 BROWARD COUNTY SURVEYOR									
DATE OF SKETCH 11-20-07	DRAWN BY SY	CHECKED BY EBA									
<b>HIGHWAY CONSTRUCTION AND ENGINEERING DIVISION</b> 1 UNIVERSITY DRIVE, SUITE 300 - PLANTATION, FLORIDA 33324-2038 Phone # (954) 577-4555											

## Appendix B. FLEPPC List of Invasive Species

### Florida Exotic Pest Plant Council's 2009 List of Invasive Plant Species

**Purpose of the List:** To focus attention on —

- ▶ the adverse effects exotic pest plants have on Florida's biodiversity and plant communities,
- ▶ the habitat losses from exotic pest plant infestations,
- ▶ the impacts on endangered species via habitat loss and alteration,
- ▶ the need to prevent habitat losses through pest-plant management,
- ▶ the socio-economic impacts of these plants (e.g., increased wildfires in certain areas),
- ▶ changes in the seriousness of different pest plants over time,
- ▶ the need to provide information that helps managers set priorities for control programs.

#### CATEGORY I

Invasive exotics that are altering native plant communities by displacing native species, changing community structures or ecological functions, or hybridizing with natives. This definition does not rely on the economic severity or geographic range of the problem, but on the documented ecological damage caused.

Scientific Name	Common Name	FLEPPC Cat.	Gov. List	Reg. Dist.
<i>Abrus precatorius</i>	rosary pea	I	N	C, S
<i>Acacia auriculiformis</i>	earleaf acacia	I		C, S
<i>Albizia julibrissin</i>	mimosa, silk tree	I		N, C
<i>Albizia lebbek</i>	woman's tongue	I		C, S
<i>Ardisia crenata</i> (A. crenulata misapplied)	coral ardisia	I		N, C, S
<i>Ardisia elliptica</i> (A. humilis misapplied)	shoebuttan ardisia	I	N	C, S
<i>Asparagus aethiopicus</i> (A. sprengeri; A. densiflorus misapplied)	asparagus-fern	I		N, C, S
<i>Bauhinia variegata</i>	orchid tree	I		C, S
<i>Bischofia javanica</i>	bishopwood	I		C, S
<i>Calophyllum antillanum</i> (C. calaba and C. inophyllum misapplied)	santa maria (names "mast wood," "Alexandrian laurel" used in cultivation)	I		S
<i>Casuarina equisetifolia</i>	Australian-pine, beach sheoak	I	P, N	N, C, S
<i>Casuarina glauca</i>	suckering Australian-pine, gray sheoak	I	P, N	C, S
<i>Cinnamomum camphora</i>	camphor tree	I		N, C, S
<i>Colocasia esculenta</i>	wild taro	I		N, C, S
<i>Colubrina asiatica</i>	lather leaf	I	N	S
<i>Cupaniopsis anacardioides</i>	carrotwood	I	N	C, S
<i>Dioscorea alata</i>	winged yam	I	N	N, C, S
<i>Dioscorea bulbifera</i>	air-potato	I	N	N, C, S
<i>Eichhornia crassipes</i>	water-hyacinth	I	P	N, C, S
<i>Eugenia uniflora</i>	Surinam cherry	I		C, S
<i>Ficus microcarpa</i> (E. nitida and E. retusa var. nitida misapplied) <sup>1</sup>	laurel fig	I		C, S
<i>Hydrilla verticillata</i>	hydrilla	I	P, U	N, C, S
<i>Hygrophila polysperma</i>	green hygro	I	P, U	N, C, S
<i>Hymenachne amplexicaulis</i>	West Indian marsh grass	I		C, S
<i>Imperata cylindrica</i> (I. brasilensis misapplied)	cogon grass	I	N, U	N, C, S
<i>Ipomoea aquatica</i>	water-spinach	I	P, U	C
<i>Jasminum dichotomum</i>	Gold Coast jasmine	I		C, S
<i>Jasminum fluminense</i>	Brazilian jasmine	I		C, S
<i>Lantana camara</i> (= L. strigocamara)	lantana, shrub verbena	I		N, C, S
<i>Ligustrum lucidum</i>	glossy privet	I		N, C
<i>Ligustrum sinense</i>	Chinese privet, hedge privet	I		N, C, S
<i>Lonicera japonica</i>	Japanese honeysuckle	I		N, C, S
<i>Ludwigia peruviana</i>	Peruvian primrosewillow	I		N, C, S
<i>Luziola subintegra</i>	Tropical American water grass	I		S
<i>Lygodium japonicum</i>	Japanese climbing fern	I	N	N, C, S
<i>Lygodium microphyllum</i>	Old World climbing fern	I	N	C, S

<sup>1</sup>Does not include *Ficus microcarpa* subsp. *foayensis*, which is sold as "Green Island Ficus"

FLEPPC 2009 List of Invasive Plant Species – Fall 2009

#### FLEPPC List Definitions:

**Exotic** – a species introduced to Florida, purposefully or accidentally, from a natural range outside of Florida.

**Native** – a species whose natural range includes Florida.

**Naturalized exotic** – an exotic that sustains itself outside cultivation (it is still exotic; it has not "become" native).

**Invasive exotic** – an exotic that not only has naturalized, but is expanding on its own in Florida native plant communities.

#### Abbreviations:

Government List (Gov. List):  
P = Prohibited aquatic plant by the Florida Department of Agriculture and Consumer Services;

N = Noxious weed listed by Florida Department of Agriculture & Consumer Services;

U = Noxious weed listed by U.S. Department of Agriculture.

Regional Distribution (Reg. Dist.):  
N = north, C = central, S = south, referring to each species' current distribution in general regions of Florida (not its potential range in the state). Please refer to the map below.



## Changes to the 2009 List:

*Luziola subintegra*, added to list as Category I

*Luziola subintegra* (rice grass) was first discovered in Lake Okeechobee by Mike Bodle in 2007. This aquatic grass is spreading in the lake. It grows in water 2-3 m deep, spreads vegetatively and by seed, and aggressively outcompetes other native and exotic species. To date, 2,000 acres have been treated.

*Nymphoides cristata*, moved from Category II to Category I

Snowflake (*Nymphoides cristata*) is an Asian aquatic that became problematic in southwest Florida in the 1990s. It is now an abundant weed in canals and ponds in southwest Florida, and has spread throughout the peninsula where it has been documented in seven counties, from Collier to St. Johns. It has colonized the Big Cypress National Preserve where it is invading several strand swamps along Tamiami Trail, presumably introduced by fisherman using cast nets infested from waters outside of the preserve.

*Salvinia minima*, added to list as Category I

Water spangles (*Salvinia minima*), first found in Florida in 1928, remained a cryptic species during a period when opinions differed on its status as native or introduced in Florida. In 2001, a study of early herbarium voucher data revealed the introduction points and systematic spread of this free-floating fern into and throughout Florida. *S. minima* outcompetes more nutritive native duckweeds by overtopping their thinner fronds, which float flat upon the water surface.

*Scleria lacustris*, moved from Category II to Category I

Wright's nutrush (*Scleria lacustris*) is an annual tropical sedge that was first collected in Florida in 1988. In Florida, its distribution extends to more than 20 distinct natural areas in eight counties within four major drainage regions of the central and southern peninsula. Its unique growth habit obscures open water and drastically alters the naturally sparse and upright structure of preexisting native vegetation. Such domination may even displace native prey for the endangered Florida snail kite, a sight feeder inhabiting many locations where invasive colonization occurs.

Scientific Name	Common Name	FLEPPC Cat.	Gov. List	Reg. Dist.
<i>Macfadyena unguis-cati</i>	cat's claw vine	I		N, C, S
<i>Manihara zapota</i>	sapodilla	I		S
<i>Melaleuca quinquerivaria</i>	melaleuca, paper bark	I	P, N, U	C, S
<i>Melinis repens</i> (= <i>Rhynchelytrum repens</i> )	Natal grass	I		N, C, S
<i>Mimosa pigra</i>	catclaw mimosa	I	P, N, U	C, S
<i>Nandina domestica</i>	nandina, heavenly bamboo	I		N, C
<i>Nephrolepis cordifolia</i>	sword fern	I		N, C, S
<i>Nephrolepis brownii</i> (= <i>N. multiflora</i> )	Asian sword fern	I		C, S
<i>Neyraudia reynaudiana</i>	Burma reed, cane grass	I	N	S
<i>Nymphoides cristata</i>	snowflake	I		C, S
<i>Pacderia cruddastiana</i>	sewer vine, onion vine	I	N	S
<i>Pacderia foetida</i>	skunk vine	I	N	N, C, S
<i>Panicum repens</i>	torpedo grass	I		N, C, S
<i>Pennisetum purpureum</i>	Napier grass	I		N, C, S
<i>Pistia stratiotes</i>	water-lettuce	I	P	N, C, S
<i>Psidium cattleianum</i> (= <i>P. littorale</i> )	strawberry guava	I		C, S
<i>Psidium guajava</i>	guava	I		C, S
<i>Pueraria montana</i> var. <i>lobata</i> (= <i>P. lobata</i> )	kudzu	I	N	N, C, S
<i>Rhodomyrtus tomentosa</i>	downy rose-myrtle	I	N	C, S
<i>Rhynchelytrum repens</i> (See <i>Melinis repens</i> )				
<i>Ruellia brittoniana</i> <sup>2</sup> ( <i>R. tweediana</i> misapplied)	Mexican petunia	I		N, C, S
<i>Salvinia minima</i>	water spangles	I		N, C, S
<i>Sapium sebiferum</i> (= <i>Triadica sebifera</i> )	popcorn tree, Chinese tallow tree	I	N	N, C, S
<i>Scaevola taccada</i> (= <i>Scaevola sericea</i> , <i>S. frutescens</i> )	scaevola, half-flower, beach naupaka	I	N	C, S
<i>Schefflera actinophylla</i> (= <i>Brassaia actinophylla</i> )	schefflera, Queensland umbrella tree	I		C, S
<i>Schinus molle</i>	Brazilian pepper	I	P, N	N, C, S
<i>Scleria lacustris</i>	Wright's nutrush	I		C, S
<i>Senna pendula</i> var. <i>glabrata</i> (= <i>Cassia coluteoides</i> )	climbing cassia, Christmas cassia, Christmas senna	I		C, S
<i>Solanum tampicense</i> (= <i>S. houstonii</i> )	wetland nightshade, aquatic soda apple	I	N, U	C, S
<i>Solanum viarum</i>	tropical soda apple	I	N, U	N, C, S
<i>Syngonium podophyllum</i>	arrowhead vine	I		N, C, S
<i>Syzygium cumini</i>	jambolan plum, Java plum	I		C, S
<i>Tectaria incisa</i>	incised halberd fern	I		S
<i>Thespesia populnea</i>	seaside mahoe	I		C, S
<i>Tradescantia fluminensis</i>	small-leaf spiderwort	I		N, C
<i>Urochloa mutica</i> (= <i>Brachiaria mutica</i> )	Para grass	I		C, S

## CATEGORY II

Invasive exotics that have increased in abundance or frequency but have not yet altered Florida plant communities to the extent shown by Category I species. These species may become ranked Category I, if ecological damage is demonstrated.

Scientific Name	Common Name	FLEPPC Cat.	Gov. List	Reg. Dist.
<i>Adenanthera pavonina</i>	red sandalwood	II		S
<i>Agave sisalana</i>	sisal hemp	II		C, S
<i>Aleurites fordii</i> (= <i>Vernicia fordii</i> )	tung oil tree	II		N, C
<i>Alstonia macrophylla</i>	devil tree	II		S
<i>Alternanthera philoxeroides</i>	alligator weed	II	P	N, C, S
<i>Antigonon leptopus</i>	coral vine	II		N, C, S
<i>Aristolochia littoralis</i>	calico flower	II		N, C, S
<i>Asystasia gangetica</i>	Ganges primrose	II		C, S

<sup>2</sup>The Plant List Committee is uncertain as to the correct name for this species. Plants cultivated in Florida, all representing the same invasive species, have in the past been referred to as *Ruellia brittoniana*, *R. woodiana*, *R. caerulea*, and *R. simplex*.

Scientific Name	Common Name	FLEPPC Cat.	Gov. List	Reg. Dist.
<i>Begonia cucullata</i>	wax begonia	II		N, C, S
<i>Blechnum pyramidatum</i>	green shrimp plant, Browne's blechnum	II		N, C, S
<i>Broussonetia papyrifera</i>	paper mulberry	II		N, C, S
<i>Callisia fragrans</i>	inch plant, spironema	II		C, S
<i>Callistemon viminalis</i>	bottlebrush, weeping bottlebrush	II		S
<i>Casuarina cunninghamiana</i>	river sheoak, Australian-pine	II	P	C, S
<i>Cecropia palmata</i>	trumpet tree	II		S
<i>Cestrum diurnum</i>	day jessamine	II		C, S
<i>Chamaedorea seifrizii</i>	bamboo palm	II		S
<i>Clematis terniflora</i>	Japanese clematis	II		N, C
<i>Cryptostegia madagascariensis</i>	rubber vine	II		C, S
<i>Cyperus involucratus</i> ( <i>C. alternifolius</i> misapplied)	umbrella plant	II		C, S
<i>Cyperus prolifer</i>	dwarf papyrus	II		C, S
<i>Dactyloctenium aegyptium</i>	Durban crowfootgrass	II		N, C, S
<i>Dalbergia sissoo</i>	Indian rosewood, sissoo	II		C, S
<i>Elaeagnus umbellata</i>	silverberry, autumn olive	II		N
<i>Elaeagnus pungens</i>	silverthorn, thorny olive	II		N, C
<i>Epipremnum pinnatum</i> cv. Aureum	pothos	II		C, S
<i>Ficus altissima</i>	false banyan, council tree	II		S
<i>Flacourtia indica</i>	governor's plum	II		S
<i>Hemarthria altissima</i>	limpo grass	II		C, S
<i>Hibiscus tiliaceus</i> (See <i>Talipariti tiliaceum</i> )				
<i>Hyparrhenia rufa</i>	jaragua	II		N, C, S
<i>Ipomoea carnea</i> ssp. <i>fistulosa</i> (= <i>I. fistulosa</i> )	shrub morning-glory	II	P	C, S
<i>Jasminum sambac</i>	Arabian jasmine	II		S
<i>Kalanchoe pinnata</i>	life plant	II		C, S
<i>Koeleria elegans</i> ssp. <i>formosana</i> (= <i>K. formosana</i> ; <i>K. paniculata</i> misapplied)	flamegold tree	II		C, S
<i>Leucaena leucocephala</i>	lead tree	II	N	N, C, S
<i>Landoltia punctata</i> (= <i>Spirodela punctata</i> )	Spotted duckweed	II		N, C, S
<i>Linnophila sessiliflora</i>	Asian marshweed	II	P, U	N, C, S
<i>Livistona chinensis</i>	Chinese fan palm	II		C, S
<i>Melia azedarach</i>	Chinaberry	II		N, C, S
<i>Melinis minutiflora</i>	Molassesgrass	II		C, S
<i>Merremia tuberosa</i>	wood-rose	II		S
<i>Murraya paniculata</i>	orange-jessamine	II		S
<i>Myriophyllum spicatum</i>	Eurasian water-milfoil	II	P	N, C, S
<i>Panicum maximum</i> (= <i>Urochloa maxima</i> , <i>Megathyrsus maximus</i> )	Guinea grass	II		N, C, S
<i>Passiflora biflora</i>	two-flowered passion vine	II		S
<i>Pennisetum setaceum</i>	green fountain grass	II		S
<i>Phoenix reclinata</i>	Senegal date palm	II		C, S
<i>Phyllostachys aurea</i>	golden bamboo	II		N, C
<i>Pitiosporum pentandrum</i>	Philippine pitiosporum, Taiwanese cheesewood	II		S
<i>Pteris vittata</i>	Chinese brake fern	II		N, C, S
<i>Psychosperma elegans</i>	solitaire palm	II		S
<i>Rhoeo spathacea</i> (see <i>Tradescantia spathacea</i> )				
<i>Ricinus communis</i>	castor bean	II		N, C, S
<i>Rotala rotundifolia</i>	roundleaf toothcup, dwarf Rotala	II		S
<i>Sansevieria hyacinthoides</i>	bowstring hemp	II		C, S
<i>Sesbania punicea</i>	purple sesban, rattlebox	II		N, C, S
<i>Solanum diphyllum</i>	two-leaf nightshade	II		N, C, S
<i>Solanum jamaicense</i>	Jamaica nightshade	II		C
<i>Solanum torvum</i>	susumber, turkey berry	II	N, U	N, C, S

FLEPPC 2009 List of Invasive Plant Species – Fall 2009

***Callistemon viminalis***, added to list as Category II

Bottlebrush (*Callistemon viminalis*), a popular landscape tree, is now invading undisturbed short hydroperiod wetland communities in Miami-Dade, Collier, and Martin Counties, including those in Big Cypress National Preserve and Everglades National Park.

***Dactyloctenium aegyptium***, added to list as Category II

Durban crowfootgrass (*Dactyloctenium aegyptium*) is an annual grass that is a widely distributed weed throughout the southeastern US. In Florida, this species has been documented in 54 counties. While it is primarily a weed of disturbed areas, it also invades beach dune communities in southern Florida, including those located within Everglades and Dry Tortugas National Parks. Dense growth of this species interferes with ground nesting birds in Dry Tortugas and competes with state and federally listed plant species on the mainland.

***Elaeagnus umbellata***, added to list as Category II

Autumn-olive (*Elaeagnus umbellata*) is an aggressive shrub capable of replacing entire native ecosystems, which it has done in numerous locations in other states. There are three known native locations in the eastern Florida panhandle; two are local escapes from cultivation. The third is a mixture of mature upland sand hill and pine communities where a wildlife planting has escaped. The entire 2,081 acre site is infested. The infestation ranges from 100% (12.5 acres), to 50% (49.9 acres), to 25% (38.3 acres), to 10% or less (1,683.4 acres).

***Hyparrhenia rufa***, added to list as Category II

Jaragua (*Hyparrhenia rufa*) is an annual grass that is known from 14 Florida counties. In Miami-Dade County it has been found in intact habitat in at least 12 pine rockland fragments, outcompeting native plant species.

***Landoltia punctata***, added to list as Category II

Spotted duckweed (*Landoltia punctata*) is a small floating aquatic plant that is native to Australia and Southeast Asia. Since it was first found in Missouri in the 1930s, it has spread to 22 states and been documented in 36 Florida counties. It invades a wide range of undisturbed aquatic habitats and outcompetes native species.

***Syzygium jambos***, formerly Category II, removed from List

The Committee has not been able to locate data showing this species behaves as a Category II invasive.

## Use of the FLEPPC List

FLEPPC encourages use of the Invasive Species List for prioritizing and implementing management efforts in natural areas, for educating lay audiences about environmental issues, and for supporting voluntary invasive plant removal programs. When a non-native plant species is to be restricted in some way by law, FLEPPC encourages use of the List as a first step in identifying species worth considering for particular types of restriction. For more information on using the FLEPPC List of Invasive Plant Species, see *Wildland Weeds* Summer 2002 issue (Vol. 5, No. 3), pp. 16-17, or <http://www.fleppc.org/list/list.htm>

**NOTE:** Not all exotic plants brought into Florida become pest plants in natural areas. The FLEPPC List of Invasive Plant Species represents only about 10% of the nearly 1,400 exotic species that have been introduced into Florida and have subsequently established outside of cultivation. Most escaped exotics usually present only minor problems in highly disturbed areas (such as roadsides). And there are other exotics cultivated in Florida that are "well-behaved" — that is, they don't escape cultivation at all.



[www.fleppc.org](http://www.fleppc.org)

Scientific Name	Common Name	FLEPPC Cat.	Gov. List	Reg. Dist.
<i>Sphagneticola trilobata</i> (= <i>Wedelia trilobata</i> )	wedelia	II		N, C, S
<i>Stachytarpheta cayennensis</i> (= <i>S. urticifolia</i> )	nettle-leaf porterweed	II		S
<i>Syagrus romanzoffiana</i> (= <i>Arecastrum romanzoffianum</i> )	queen palm	II		C, S
<i>Talipariti tiliaceum</i> (= <i>Hibiscus tiliaceus</i> )	mahoe, sea hibiscus	II		C, S
<i>Terminalia catappa</i>	tropical-almond	II		C, S
<i>Terminalia muelleri</i>	Australian-almond	II		C, S
<i>Tradescantia spathacea</i> (= <i>Rhoeo spathacea</i> , <i>Rhoeo discolor</i> )	oyster plant	II		S
<i>Tribulus cistoides</i>	puncture vine, burr-nut	II		N, C, S
<i>Urena lobata</i>	Caesar's weed	II		N, C, S
<i>Vitex trifolia</i>	simple-leaf chaste tree	II		C, S
<i>Washingtonia robusta</i>	Washington fan palm	II		C, S
<i>Wedelia</i> (see <i>Sphagneticola</i> above)				
<i>Wisteria sinensis</i>	Chinese wisteria	II		N, C
<i>Xanthosoma sagittifolium</i>	malanga, elephant ear	II		N, C, S

**Citation example:**  
FLEPPC. 2009. List of Invasive Plant Species. Florida Exotic Pest Plant Council. Internet: <http://www.fleppc.org/list/list.htm> or *Wildland Weeds* Vol. 12(4): 13-16, Fall 2009.

The 2009 list was prepared by the FLEPPC Plant List Committee:

Keith A. Bradley – Chair (2006-present), The Institute for Regional Conservation, 22601 SW 152<sup>nd</sup> Ave., Miami, FL 33170, (305) 247-6547, [bradley@regionalconservation.org](mailto:bradley@regionalconservation.org)

Janice A. Duquesnel, Florida Park Service, Florida Department of Environmental Protection, P.O. Box 1052, Islamorada, FL 33036, (305) 664-8455, [Janice.Duquesnel@dep.state.fl.us](mailto:Janice.Duquesnel@dep.state.fl.us)

David W. Hall, Private Consulting Botanist, 3666 NW 13<sup>th</sup> Place, Gainesville, FL 32605, (352) 375-1370

Roger L. Hammer, Miami-Dade Parks Department, Castellow Hammock Nature Center, 22301 S.W. 162<sup>nd</sup> Ave., Miami, FL 33030, [kaskazi44@comcast.net](mailto:kaskazi44@comcast.net)

Patricia L. Howell, Broward County Parks, Environmental Section, 950 NW 38<sup>th</sup> St., Oakland Park, FL 33309, (954) 357-8137, [phowell@broward.org](mailto:phowell@broward.org)

Colette C. Jacono, Department of Agronomy, Center for Aquatic & Invasive Plants, IFAS, University of Florida, 7922 NW 71<sup>st</sup> St., Gainesville, FL 32653, (352) 392-6894, [colette@ufl.edu](mailto:colette@ufl.edu)

Kenneth A. Langeland, Center for Aquatic and Invasive Plants, IFAS, University of Florida, 7922 NW 71<sup>st</sup> St., Gainesville, FL 32606, (352) 392-9614, [gator@ufl.edu](mailto:gator@ufl.edu)

Chris Lockhart, Florida Natural Areas Inventory, c/o P.O. Box 243116, Boynton Beach, FL 33424-3116, (850) 509-6482, [clockhart@fnai.org](mailto:clockhart@fnai.org)

Gil Nelson, Gil Nelson Associates, 157 Leonards Dr., Thomasville, GA 31792, [gil@gilnelson.com](mailto:gil@gilnelson.com)

Robert W. Pemberton, Invasive Plants Research Lab, U.S. Dept. of Agriculture, 3225 College Ave., Ft. Lauderdale, FL 33312, [Robert.Pemberton@ars.usda.gov](mailto:Robert.Pemberton@ars.usda.gov)

Jimi L. Sadle, Everglades National Park, 40001 State Road 9336, Homestead, FL 33034, (305) 242-7806, [jimi\\_sadle@nps.gov](mailto:jimi_sadle@nps.gov)

Robert W. Simons, 1122 SW 11<sup>th</sup> Ave., Gainesville, FL 32601-7816

Sandra M. Vardaman, Alachua County Forever Land Conservation Program, Alachua County Environmental Protection Dept., 201 SE 2<sup>nd</sup> Ave., Suite 201, Gainesville, Florida 32601, (352) 264-6803, [smvardaman@alachuacounty.us](mailto:smvardaman@alachuacounty.us)

Daniel B. Ward, Department of Botany, University of Florida, 220 Bartram Hall, Gainesville, FL 32611

Richard P. Wunderlin, Institute for Systematic Botany, Dept. of Biological Sciences, University of South Florida, Tampa, FL 33620, (813) 974-2359, [rwunder@cas.usf.edu](mailto:rwunder@cas.usf.edu)

**FLEPPC Database** – The Florida Exotic Pest Plant Database contains over 75,000 sight records of infestations of FLEPPC Category I and Category II species in Florida public lands and waters. 211 species are recorded. Nearly all of the records are from local, state, and federal parks and preserves; a few records document infestations in regularly disturbed public lands such as highways or utility rights-of-way. Natural area managers and other veteran observers of Florida's natural landscapes submit these records, with many supported further by voucher specimens housed in local or regional herbaria for future reference and verification. New and updated observations can be submitted online at [www.eddmaps.org/florida/](http://www.eddmaps.org/florida/). This database, along with other plant-data resources such as the University of South Florida Atlas of Florida Vascular Plants at [www.plantatlas.usf.edu](http://www.plantatlas.usf.edu), the Florida Natural Areas Inventory database at [www.fnai.org](http://www.fnai.org), and The Institute for Regional Conservation Floristic Inventory of South Florida database at [www.regionalconservation.org](http://www.regionalconservation.org), provides important basic supporting information for the FLEPPC List of Invasive Plant Species.

**Images and/or distributional data of FLEPPC-listed species may be found at one or more of the following websites:** University of South Florida Atlas of Florida Vascular Plants, [www.plantatlas.usf.edu](http://www.plantatlas.usf.edu); the University of Florida Herbarium collection catalog, <http://www.flnmh.ufl.edu/herbarium/cat/>, and image gallery, <http://www.flnmh.ufl.edu/herbarium/cat/imagesearch.asp>; at Fairchild Tropical Botanic Garden's Virtual Herbarium, [www.virtualherbarium.org/vhportal.html](http://www.virtualherbarium.org/vhportal.html); The Robert K. Godfrey Herbarium at Florida State University, <http://herbarium.bio.fsu.edu/index.php>; the University of Florida's IFAS Center for Aquatic and Invasive Plants, <http://plants.ifas.ufl.edu>, and the USDA PLANTS database, <http://plants.usda.gov/>. Please note that greater success and accuracy in searching for plant images is likely if you search by scientific name rather than a common name. Common names often vary in cultivation and across regions. For additional information on plants included in this list, see related links and pages at [www.fleppc.org](http://www.fleppc.org).

FLEPPC 2009 List of Invasive Plant Species – Fall 2009



## Appendix C.

### Concept Plan B HORTT PARK 1700 S.W. 14th Court Fort Lauderdale, Florida

- Fitness Stations
- Park Benches
- Water Fountain
- Picnic Tables
- Lighting
- Pavilion
- Existing Trees
- Existing Palms
- Community Garden Plots



CITY OF FORT LAUDERDALE  
PUBLIC WORKS DEPARTMENT  
ARCHITECTURAL BUREAU  
Architecture • Landscape Architecture • Project Management  
100 North Andrews Avenue, 8th Floor, Fort Lauderdale, Florida 33301



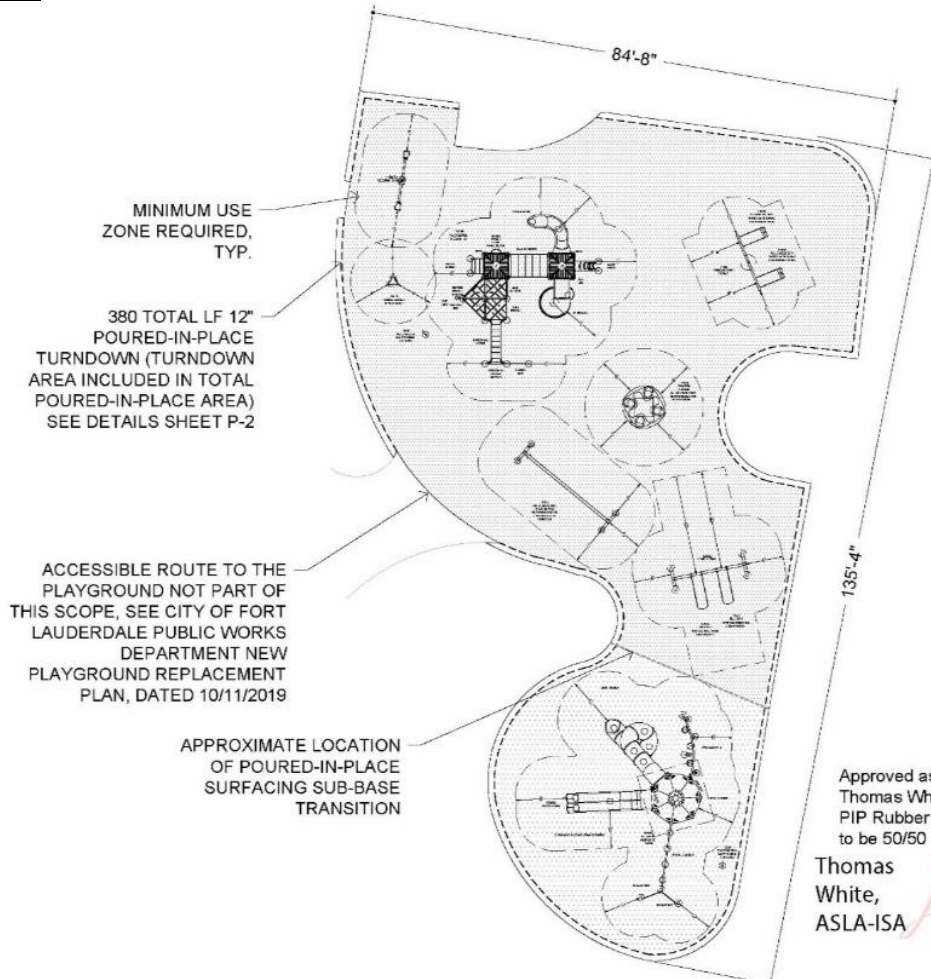
Scale: NTS

**Appendix D. Proposed Playground Rendering**





**Appendix E. – As Built Plan**



**SITE LOCATION MAP** NOT TO SCALE  
 \*SEE SHEET P-2 FOR SITE LOCATION MAP ENLARGEMENT  
 \*SEE SHEET P-3 FOR SURFACING DETAILS AND INFORMATION

**TOTAL PLAY COMPONENTS:** 2-5 AGE AREA - 16  
5-12 AGE AREA - 9

2-5 AGE AREA			
TOTAL ELEVATED PLAY COMPONENTS	9		
TOTAL ELEVATED COMPONENTS ACCESSIBLE BY RAMP	0	REQUIRED	0
TOTAL ELEVATED COMPONENTS ACCESSIBLE BY TRANSFER	9	REQUIRED	5
TOTAL ACCESSIBLE GROUND LEVEL COMPONENTS SHOWN	7	REQUIRED	3
TOTAL DIFFERENT TYPES OF GROUND LEVEL COMPONENTS	6	REQUIRED	3
5-12 AGE AREA			
TOTAL ELEVATED PLAY COMPONENTS	3		
TOTAL ELEVATED COMPONENTS ACCESSIBLE BY RAMP	0	REQUIRED	0
TOTAL ELEVATED COMPONENTS ACCESSIBLE BY TRANSFER	3	REQUIRED	2
TOTAL ACCESSIBLE GROUND LEVEL COMPONENTS SHOWN	4	REQUIRED	1
TOTAL DIFFERENT TYPES OF GROUND LEVEL COMPONENTS	4	REQUIRED	4

Playground equipment meets the requirements of FBC Accessibility Code, Table 240.2.1.2

Approved as Drawn.  
 Thomas White 11-6-2020  
 PIP Rubber Surface Color to be 50/50 Blue/Black  
 Thomas White, ASLA-ISA  
 Digitally signed by Thomas White, ASLA-ISA  
 Date: 2020.11.06 13:44:21 -05'00'

**WARNING**  
 SURFACING AND PLAYSURFACES MAY BECOME HOT AND CAUSE BURNS. CHECK FOR HOT SURFACES PRIOR TO PLAYING ON THE PLAYGROUND.

**GENERAL NOTES:**  
 1. EQUIPMENT LOCATION TO BE FIELD VERIFIED PRIOR TO CONSTRUCTION  
 2. ACCESSIBLE ROUTE OF TRAVEL TO THE PLAYGROUND TO BE PROVIDED BY OTHERS, UNLESS OTHERWISE NOTED  
 3. BASE MUST EXHIBIT POSITIVE DRAINAGE IN ALL AREAS

Revisions:		
#	Revision	Date
1	PLAN NOTES CHANGES	6/22/20
2	REVISED SURFACING DETAIL	8/25/20

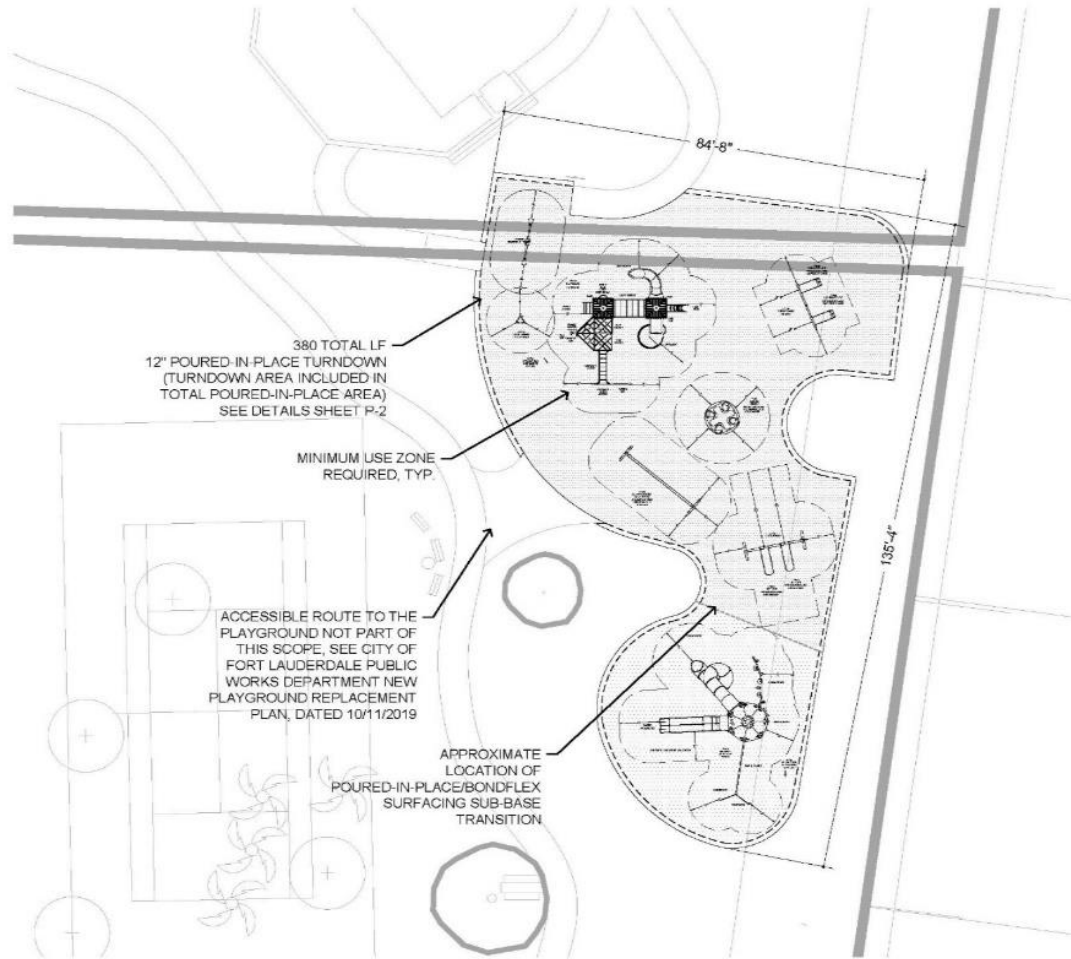
Date: 2/21/2020  
 Project: 17108  
 Drawing: 17108-1-2- Revised  
 Sheet: **P-1**  
 Play Equipment Plan

162023 WELCOME SIGN (L.S. PROVIDED) 2' X 5' YEARS  
 162525 WELCOME SIGN (L.S. PROVIDED) 5' X 12' YEARS  
 WELCOME SIGN TO BE LOCATED IN CONSULTATION WITH OWNER  
 NOT FOR CONSTRUCTION



**Play Equipment Plan**  
**City of Fort Lauderdale-Hortt Park**  
 Fort Lauderdale, FL



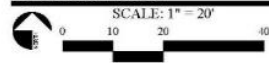


**GENERAL NOTES:**  
 1. EQUIPMENT LOCATION TO BE FIELD VERIFIED PRIOR TO CONSTRUCTION  
 2. ACCESSIBLE ROUTE OF TRAVEL TO THE PLAYGROUND TO BE PROVIDED BY OTHERS  
 3. BASE MUST EXHIBIT POSITIVE DRAINAGE IN ALL AREAS

**\*SITE PLAN/SURVEY INFORMATION SHOWN FOR REFERENCE ONLY. NOT PART OF THIS SCOPE.**

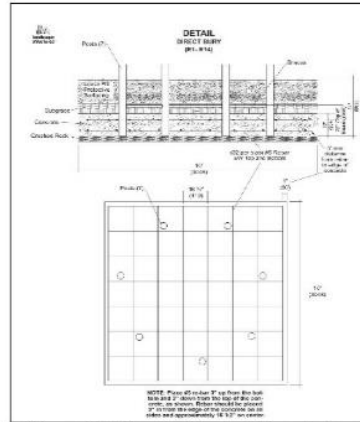
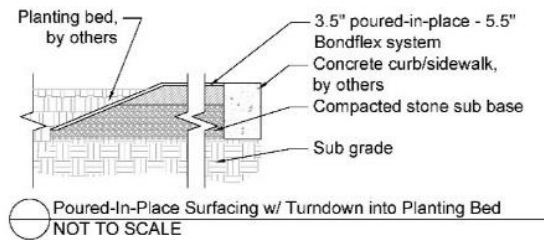
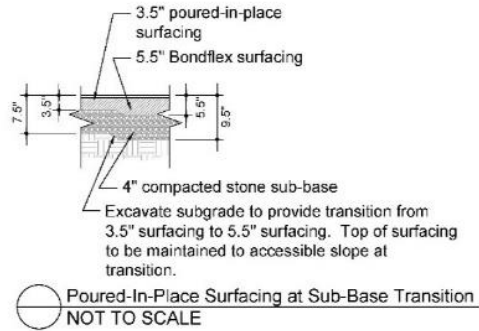
Revisions:		
#	Revisions	Date
1	PLAN NOTES CHANGES	6/22/20
2	REVISED SURFACING DETAIL	8/25/20
Date:	2/21/2020	
Project:	17108	
Drawing:	17108-1-2-Revised	
Sheet:	<b>P-2</b>	
	Site Location Map	

NOT FOR CONSTRUCTION



**Site Location Map**  
**City of Fort Lauderdale-Hortt Park**  
 Fort Lauderdale, FL





**SURFACING**

- 5530 SF
- POURED-IN-PLACE
- 8' MAXIMUM FALL HEIGHT
- #57 STONE SUB-BASE
- 380 LF 12" TURNDOWN (AREA OF TURNDOWN INCLUDED IN POURED-IN-PLACE AREA TOTAL)
- 1625 SF
- BONDFLEX
- 12' MAXIMUM FALL HEIGHT
- #57 STONE SUB-BASE

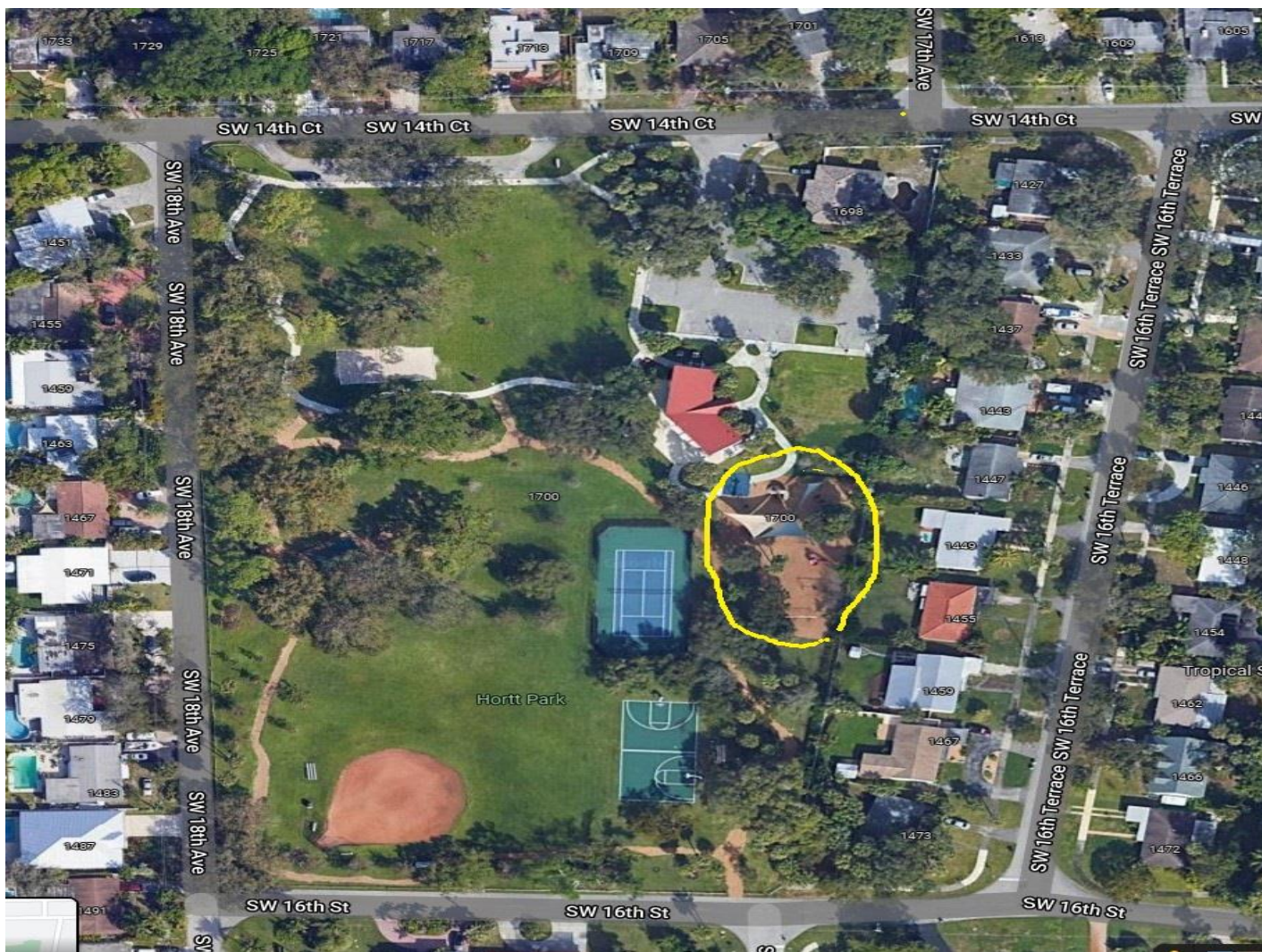
Revisions:		
#	Revision	Date
1	PLAN NOTES CHANGES	6/22/20
2	REVISED SURFACING DETAIL	8/25/20
Date: 2/21/2020		
Project: 17108		
Drawing: 17108-1-2- Revised		
Sheet: P-3		
Details		

NOT FOR CONSTRUCTION

**Details**  
**City of Fort Lauderdale-Hortt Park**  
Fort Lauderdale, FL



**Appendix F. - Aerial View of Park Site**



## Appendix G. Florida Natural Areas Inventory (FNAI) Form

### Florida Natural Areas Inventory - Natural Community EOR Form (pg 1 of 2)

D

Surveysite: \_\_\_\_\_ Surveyors: \_\_\_\_\_ Polygon # or ID: \_\_\_\_\_ date: \_\_\_\_\_  
 GPS file #: \_\_\_\_\_ lat: \_\_\_\_\_ long: \_\_\_\_\_ Photo #: \_\_\_\_\_ Comments: \_\_\_\_\_  
 Directions/location comments: \_\_\_\_\_

Community type: \_\_\_\_\_ Soil series: \_\_\_\_\_ Source: \_\_\_\_\_

**DOMINANT VEGETATION WITHIN 20M RADIUS OF OBSERVATION POINT:**

STRATA	cov cl	ht cl	DOMINANT SPECIES COVER: Scientific name - Braun/Blanquet scale
emergent tree			
canopy			
sub-canopy			
tall shrub/ sapling			
short shrub/ sapl, seedl.			
herbaceous tot.			
graminoid			
forb			
fern			
non-vascular			
epiphyte			
vine / liana			

Cover Class - Use Braun/Blanquet scale: 1=0-1% 2=1-5% 3=5-25% 4=25-50% 5=50-75% 6=75-100%  
 Height Class - 1<0.5m 2=0.5-2m 3=2-5m 4=5-10m 5=10-15m 6=15-20m 7=20-35m 8>35m

**SUCCESSION COMMENTS**

**CANOPY AGE**

- 1 old growth
- 2 older mature
- 3 mature
- 4 younger mature
- 5 prereproductive trees
- 6 early successional

SUCCESSION COMMENTS (free size, structure, age, etc.): \_\_\_\_\_

**NATURE OF DISTURBANCE**

- 1 firebreaks
- 2 ORV trails or roads
- 3 agriculture
- 4 wildlife food plots
- 5 forestry site prep.
- 6 logging activities
- 7 animal digging
- 8 ditching or hydrologic
- 9 shrub encroachment
- 10 exotics encroachment
- 11 natural disturbances

**SEVERITY OF DISTURBANCE**

- 1 light
  - 2 moderate
  - 3 heavy
  - 4 severe
- Describe: \_\_\_\_\_

**WEEDY SPECIES**

- 1 absent
  - 2 occasional - <5%
  - 3 common - >5%
- List: \_\_\_\_\_

**EXOTIC SPECIES**

- 1 absent
  - 2 occasional - <5%
  - 3 common - >5%
- List: \_\_\_\_\_

Disturbance Comments: \_\_\_\_\_

**HYDROLOGIC ALTERATION**

- 1 shrub encroachment
- 2 fire breaks
- 3 ditching
- 4 roads
- 5 impoundment
- 6 dams in watershed
- 7 canals
- 8 salt water intrusion
- 9 groundwater drawdown
- 10 cause unknown

COMMENTS (Discuss severity for each type and give overall description):

**PAST FIRE**

- 1 not suppressed
- 2 suppressed
- 3 not applicable
- 4 unknown

Comments/evidence: \_\_\_\_\_

**MANAGEMENT COMMENTS**

D

**OBSERVATION POINT FORM** (pg. 2 of 2)

EORANK: (summary of factors such as quality, condition, viability, defensibility, etc.)

EORANKDATE: \_\_\_\_\_

- A Excellent
- B Good
- C Marginal
- D Poor

EORANKCOM: \_\_\_\_\_  
 \_\_\_\_\_  
 \_\_\_\_\_

**COMMUNITY DESCRIPTION (EODATA)**

\_\_\_\_\_  
 \_\_\_\_\_  
 \_\_\_\_\_

**LANDSCAPE CONTEXT**

\_\_\_\_\_  
 \_\_\_\_\_  
 \_\_\_\_\_

**PLANT CHECKLIST**

CANOPY & EMERGENTS	%	SHORT SHRUBS	%	HERBACEOUS	%		%
				<i>forb</i>		<i>graminoid</i>	
<i>SUB-CANOPY/ TALL SHRUBS</i>						<i>fem</i>	
						<i>non-vascular</i>	
						VINES	
						EPIPHYTE	

A=abundant, C=common, O=occasional, R=rare

Revised 9/23/2002

**Appendix E. Trails and Greenways**



**Hortt Park Site**

**Appendix I. Priority Schedule**

**HORTT PARK PRIORITY SCHEDULE**

MANAGEMENT ACTIVITY	2008			2009			2010			2011			2012			2013			2014														
	7	8	9	10	11	12	1	2	3	4	5	6	7	8	9	10	11	12	1	2	3	4	5	6	7	8	9	10	11	12			
School Board Vacates																																	
Demo / Clearing / Removal of Wastes																																	
Amend land use designation to Recreation and Open Space-DRC, P&Z																																	
Rezoning to Park																																	
Remove exotic/invasive plants																																	
Perform exotic/invasive plant retreatment																																	
Include in project in City's Capital Improvement Plan																																	
Install County funding sign																																	
Develop amenities design (conceptual)*																																	
Develop landscaping and native planting plan																																	
Construction Plan Design																																	
City Commission approval of plans and designs																																	
Obtain necessary permits and bids																																	
Perform landscaping and native planting																																	
Construct amenities**																																	
Open site to public																																	
Apply for Backyard Wildlife Certification																																	

\* The "develop amenities design" phase is where specifications for the amenities listed in the management plan are finalized so the job can go out for bid.

\*\* Other amenities include jogging path, picnic tables, benches, bike rack



**Appendix J. Updated Priority Schedule**

**HORTT PARK PRIORITY SCHEDULE**

MANAGEMENT ACTIVITY	2015												2019												2020												2021												2022												2023															
	1	2	3	4	5	6	7	8	9	10	11	12	1	2	3	4	5	6	7	8	9	10	11	12	1	2	3	4	5	6	7	8	9	10	11	12	1	2	3	4	5	6	7	8	9	10	11	12	1	2	3	4	5	6	7	8	9	10	11	12	1	2	3	4	5	6	7	8	9	10	11	12				
City Commission Approval of plans & Designs					█																																																																							
HOA Approval																																																																												
Permitting					█	█	█	█																																																																				
Demo/Clearing/Removal of Wastes					█																																																																							
Tree Locating						█																																																																						
Palm Removal						█																																																																						
Rock base compacting							█																																																																					
Construction of 60 foot by 120 foot asphalt tennis court								█																																																																				
Anchoring																																																																												
Surfacing and Striping																																																																												
Construction of 10-foot high chain link fence																																																																												
Irrigation Adjustments																																																																												
New Sodding																																																																												
Playground Planning Phase																																																																												
Playground Design Phase																																																																												
Playground Bidding Phase																																																																												
Playground Construction Phase																																																																												
Playground Warranty Phase																																																																												
Welcome Signage																																																																												
Open Site to Public																																																																												