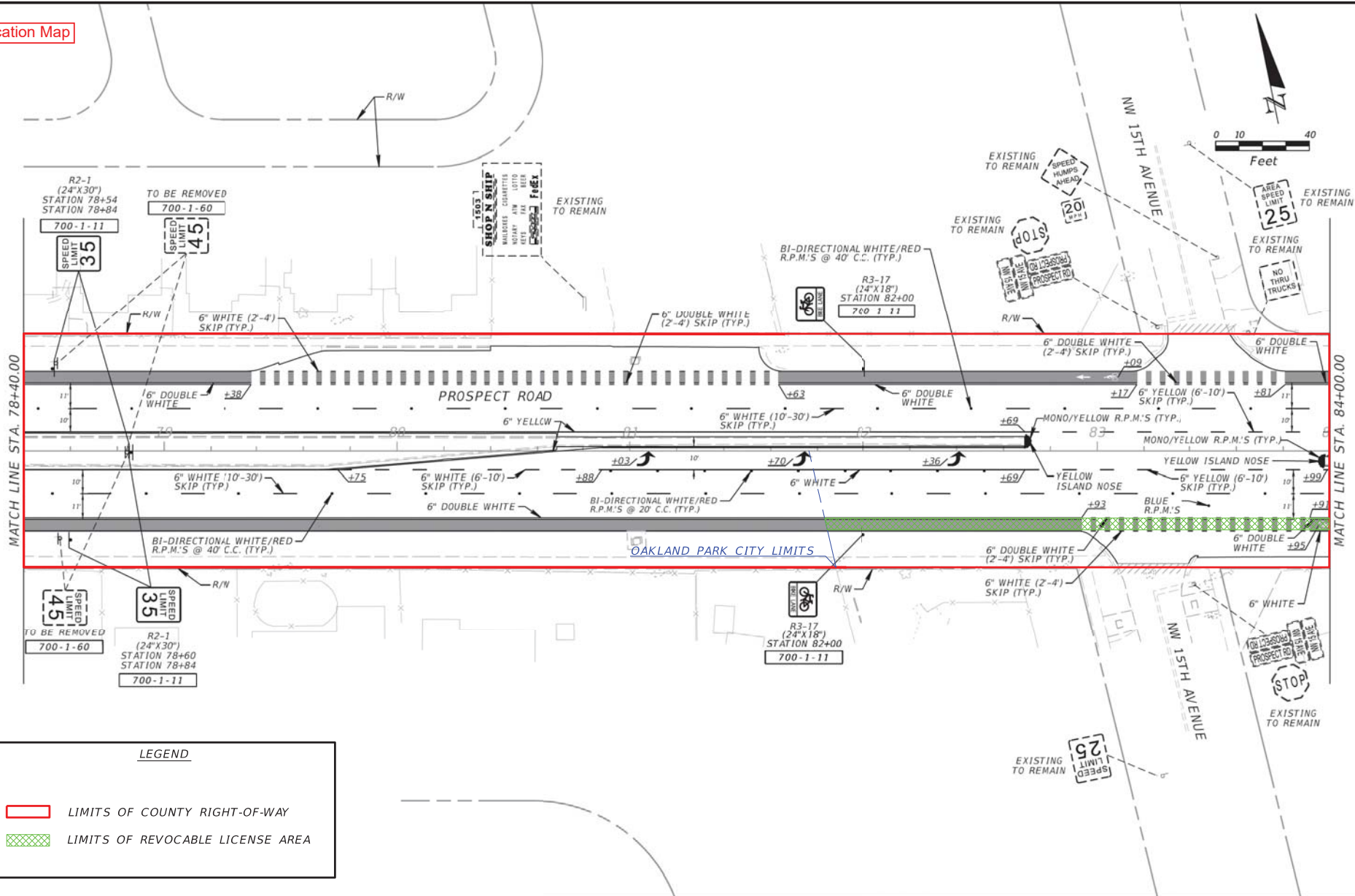


 Project Location

Prospect Road from west of NW 15th Ave to N Dixie Hwy  
Precise Limits of Revocable License Area Shown on Following Pages

Location Map



LEGEND

- LIMITS OF COUNTY RIGHT-OF-WAY
- LIMITS OF REVOCABLE LICENSE AREA

REVISIONS	
DATE	DESCRIPTION

PUBLIC WORKS DEPARTMENT  
TRAFFIC ENGINEERING DIVISION  
2300 WEST COMMERCIAL BLVD  
FORT LAUDERDALE, FL 33309



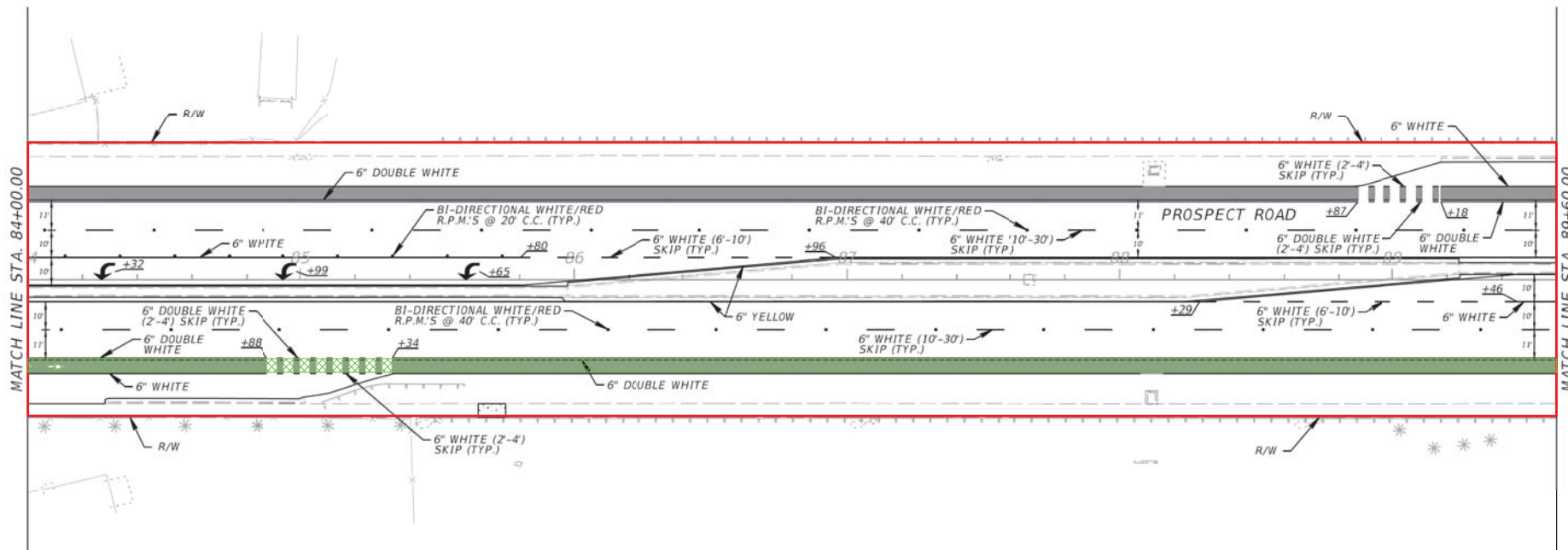
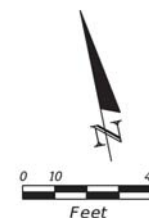
PUBLIC WORKS DEPARTMENT  
TRAFFIC ENGINEERING DIVISION

COUNTY PROJECT NO.

SIGNING AND PAVEMENT  
MARKING PLAN

SHEET NO.  
S-1

Location Map



LEGEND

- LIMITS OF COUNTY RIGHT-OF-WAY
- LIMITS OF REVOCABLE LICENSE AREA

DATE	REVISIONS DESCRIPTION

PUBLIC WORKS DEPARTMENT  
TRAFFIC ENGINEERING DIVISION  
2300 WEST COMMERCIAL BLVD  
FORT LAUDERDALE, FL 33309



PUBLIC WORKS DEPARTMENT  
TRAFFIC ENGINEERING DIVISION

COUNTY PROJECT NO.

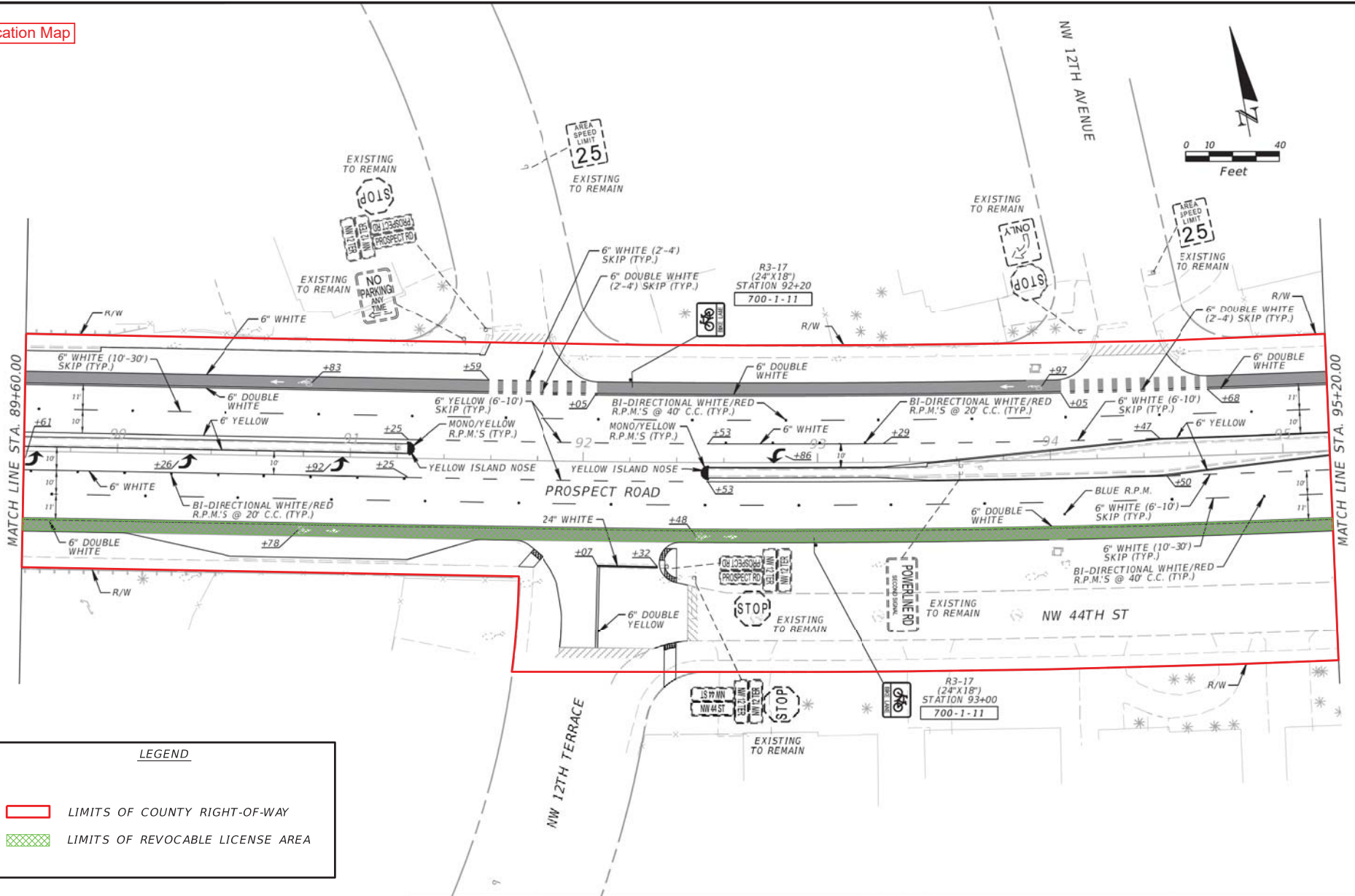
SIGNING AND PAVEMENT  
MARKING PLAN

SHEET NO.

S-2

SUSERS      SDATES      ST/MS      SF/LES

Location Map



LEGEND

- LIMITS OF COUNTY RIGHT-OF-WAY
- LIMITS OF REVOCABLE LICENSE AREA

REVISIONS	
DATE	DESCRIPTION

PUBLIC WORKS DEPARTMENT  
TRAFFIC ENGINEERING DIVISION  
2300 WEST COMMERCIAL BLVD  
FORT LAUDERDALE, FL 33309



PUBLIC WORKS DEPARTMENT  
TRAFFIC ENGINEERING DIVISION

COUNTY PROJECT NO.

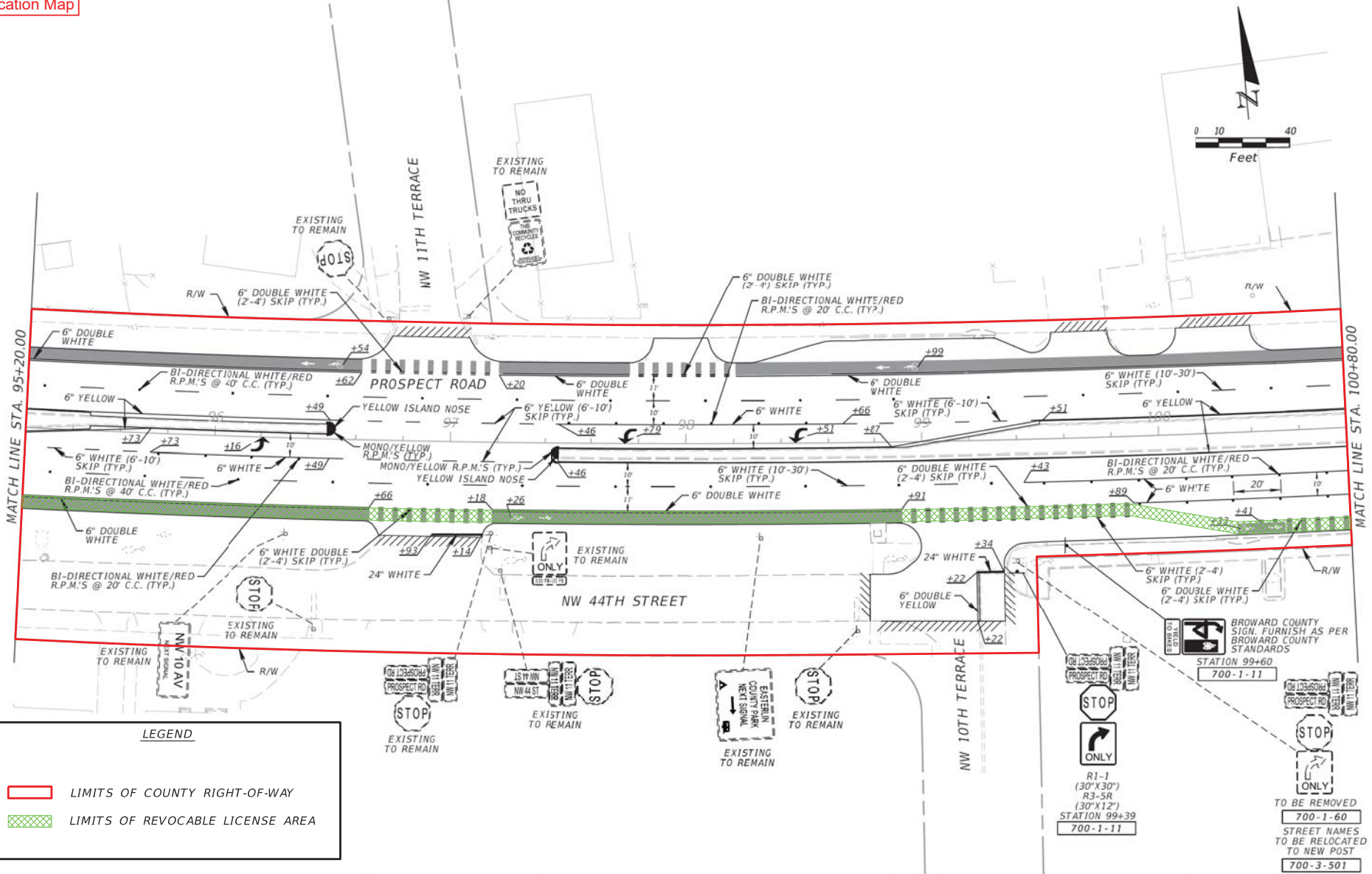
SIGNING AND PAVEMENT  
MARKING PLAN

SHEET NO.

S-3

SUSERS SDATES STITES SFILES

Location Map



**LEGEND**

- LIMITS OF COUNTY RIGHT-OF-WAY
- LIMITS OF REVOCABLE LICENSE AREA

REVISIONS	
DATE	DESCRIPTION

PUBLIC WORKS DEPARTMENT  
TRAFFIC ENGINEERING DIVISION  
2300 WEST COMMERCIAL BLVD  
FORT LAUDERDALE, FL 33309



PUBLIC WORKS DEPARTMENT  
TRAFFIC ENGINEERING DIVISION

COUNTY PROJECT NO.

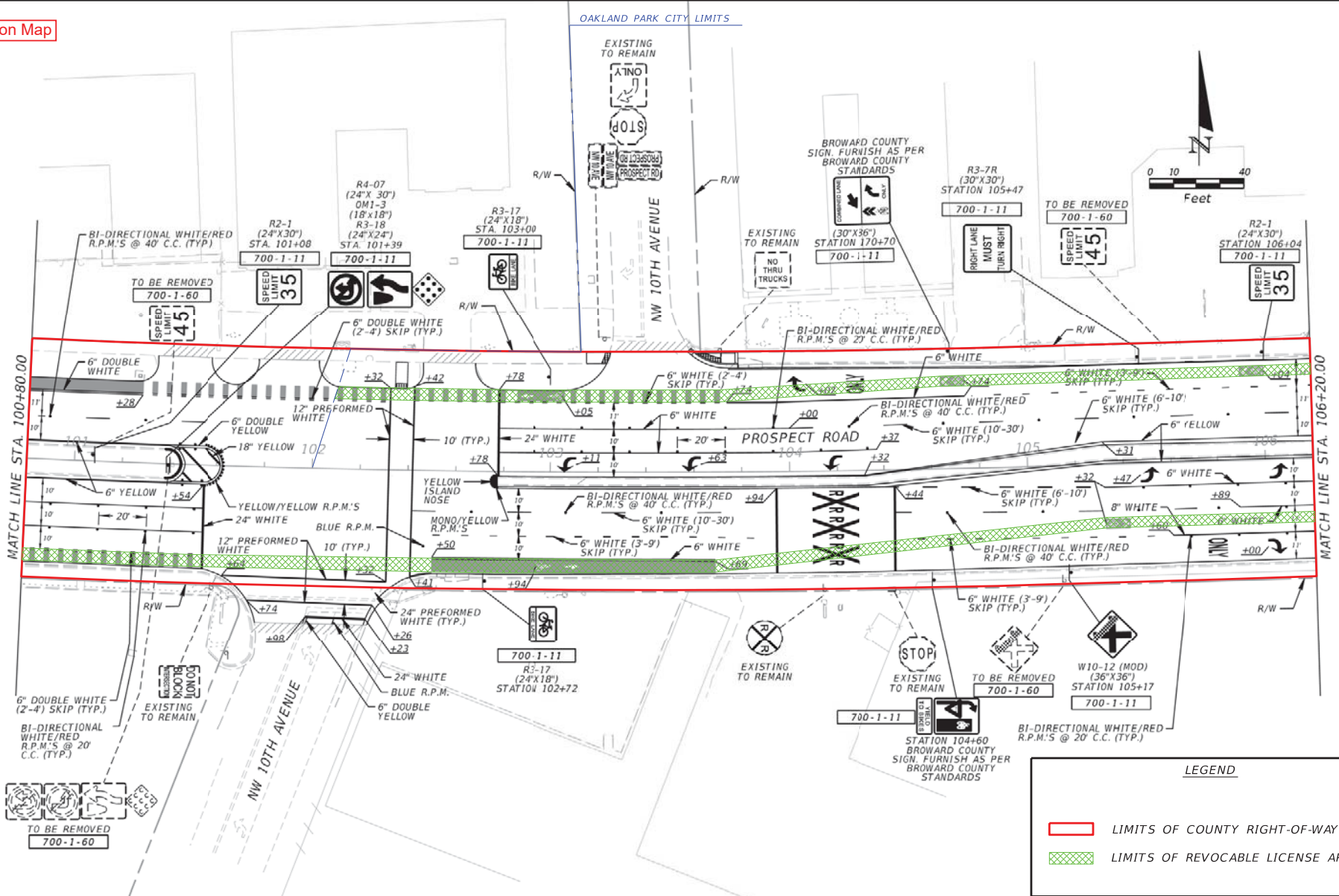
**SIGNING AND PAVEMENT  
MARKING PLAN**

SHEET NO.

S-4

SUSERS SDW/ES ST/MS SF/LES

Location Map



**LEGEND**

- [Red Line] LIMITS OF COUNTY RIGHT-OF-WAY
- [Green Hatched Area] LIMITS OF REVOCABLE LICENSE AREA

DATE	REVISIONS DESCRIPTION

PUBLIC WORKS DEPARTMENT  
TRAFFIC ENGINEERING DIVISION  
2300 WEST COMMERCIAL BLVD  
FORT LAUDERDALE, FL 33309



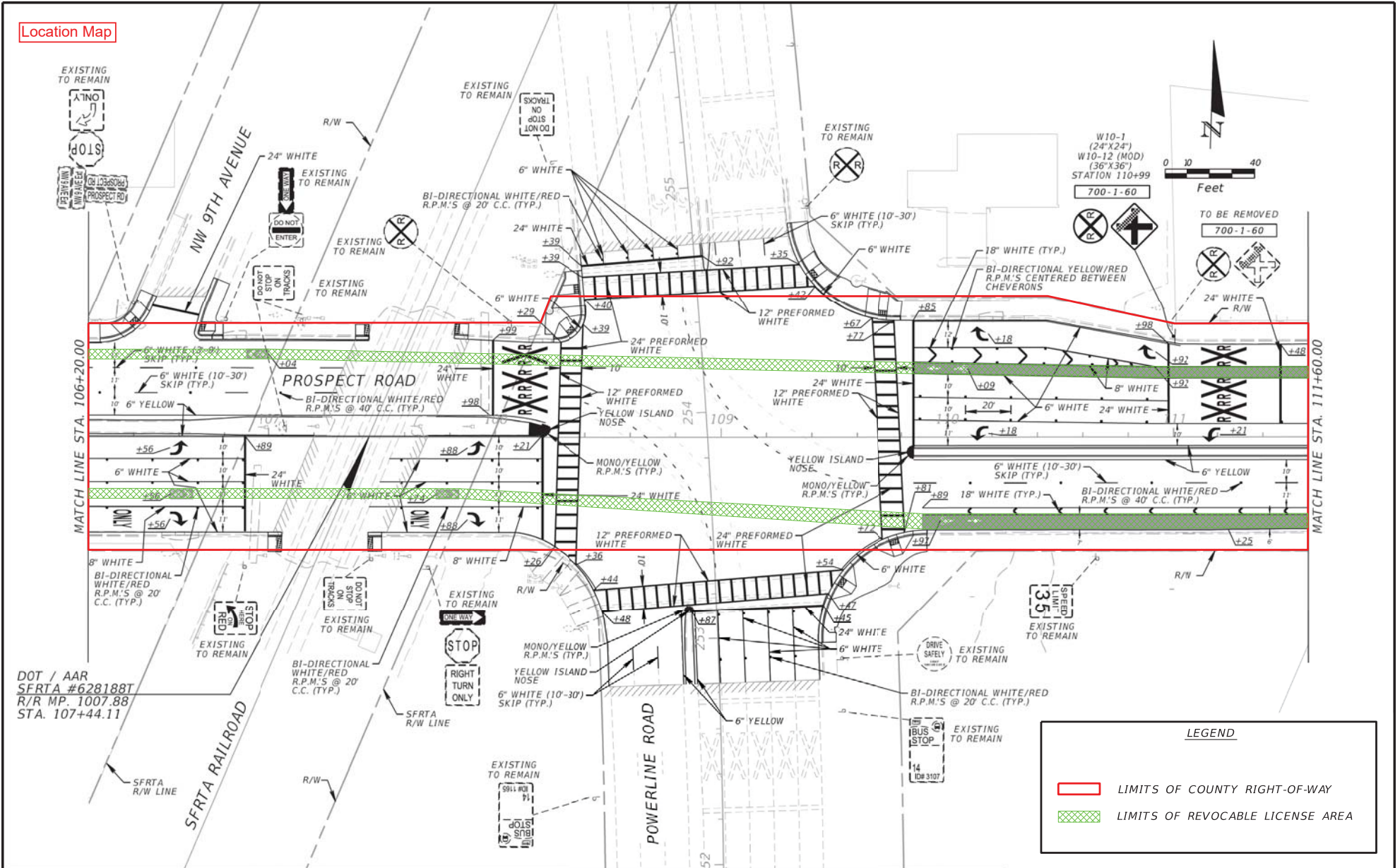
PUBLIC WORKS DEPARTMENT TRAFFIC ENGINEERING DIVISION	COUNTY PROJECT NO.

**SIGNING AND PAVEMENT MARKING PLAN**

SHEET NO.  
S-5

SUSERS      SDATE5      STIME5      SFILES

Location Map



DATE	REVISIONS DESCRIPTION

PUBLIC WORKS DEPARTMENT  
TRAFFIC ENGINEERING DIVISION  
2300 WEST COMMERCIAL BLVD  
FORT LAUDERDALE, FL 33309



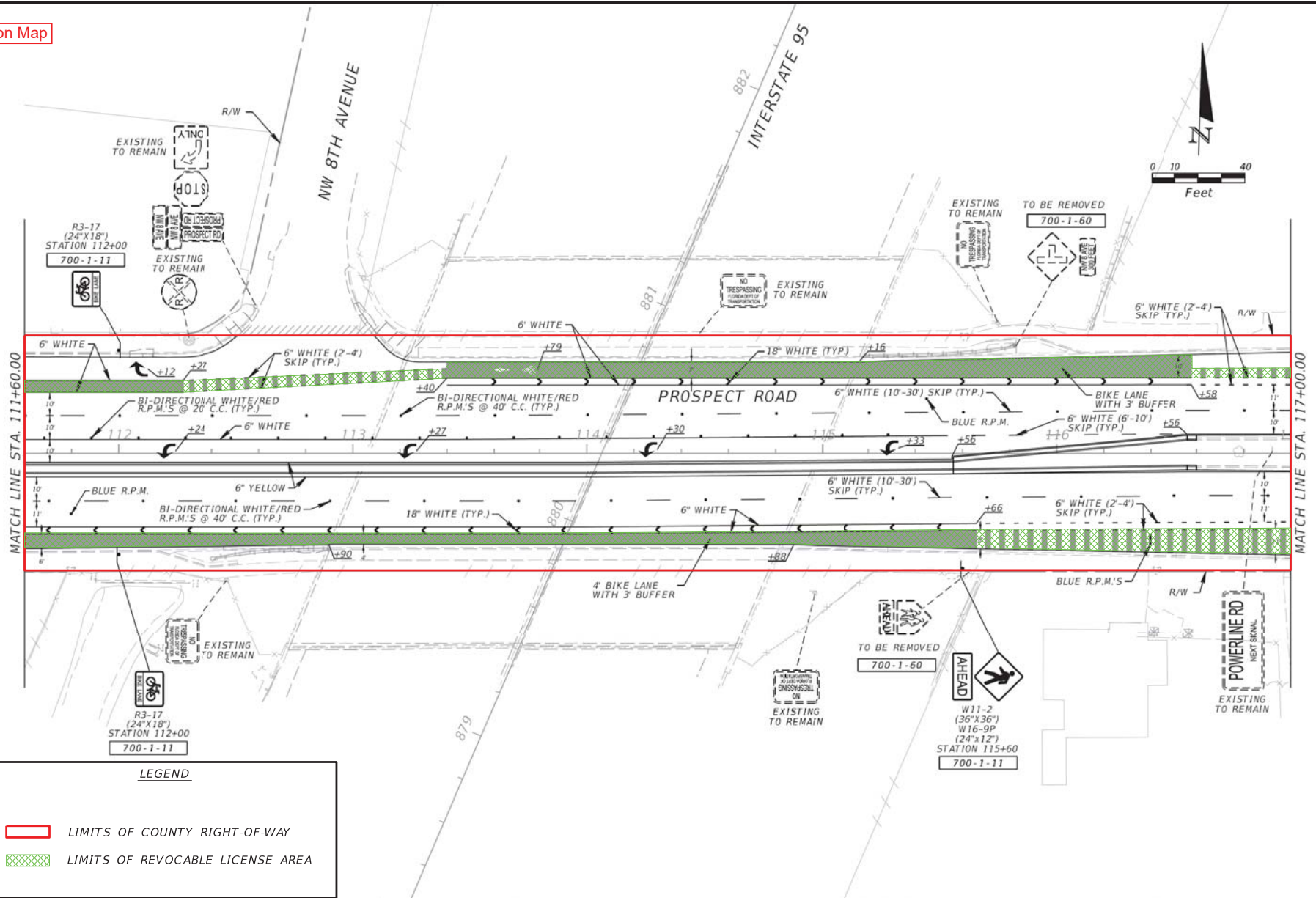
PUBLIC WORKS DEPARTMENT TRAFFIC ENGINEERING DIVISION	COUNTY PROJECT NO.

**SIGNING AND PAVEMENT  
MARKING PLAN**

SHEET NO.
S-6

6USERS 5DARES 5TIMES 5FILES

Location Map



LEGEND

- LIMITS OF COUNTY RIGHT-OF-WAY
- LIMITS OF REVOCABLE LICENSE AREA

REVISIONS	
DATE	DESCRIPTION

PUBLIC WORKS DEPARTMENT  
TRAFFIC ENGINEERING DIVISION  
2300 WEST COMMERCIAL BLVD  
FORT LAUDERDALE, FL 33309



PUBLIC WORKS DEPARTMENT  
TRAFFIC ENGINEERING DIVISION

COUNTY PROJECT NO.

SIGNING AND PAVEMENT  
MARKING PLAN

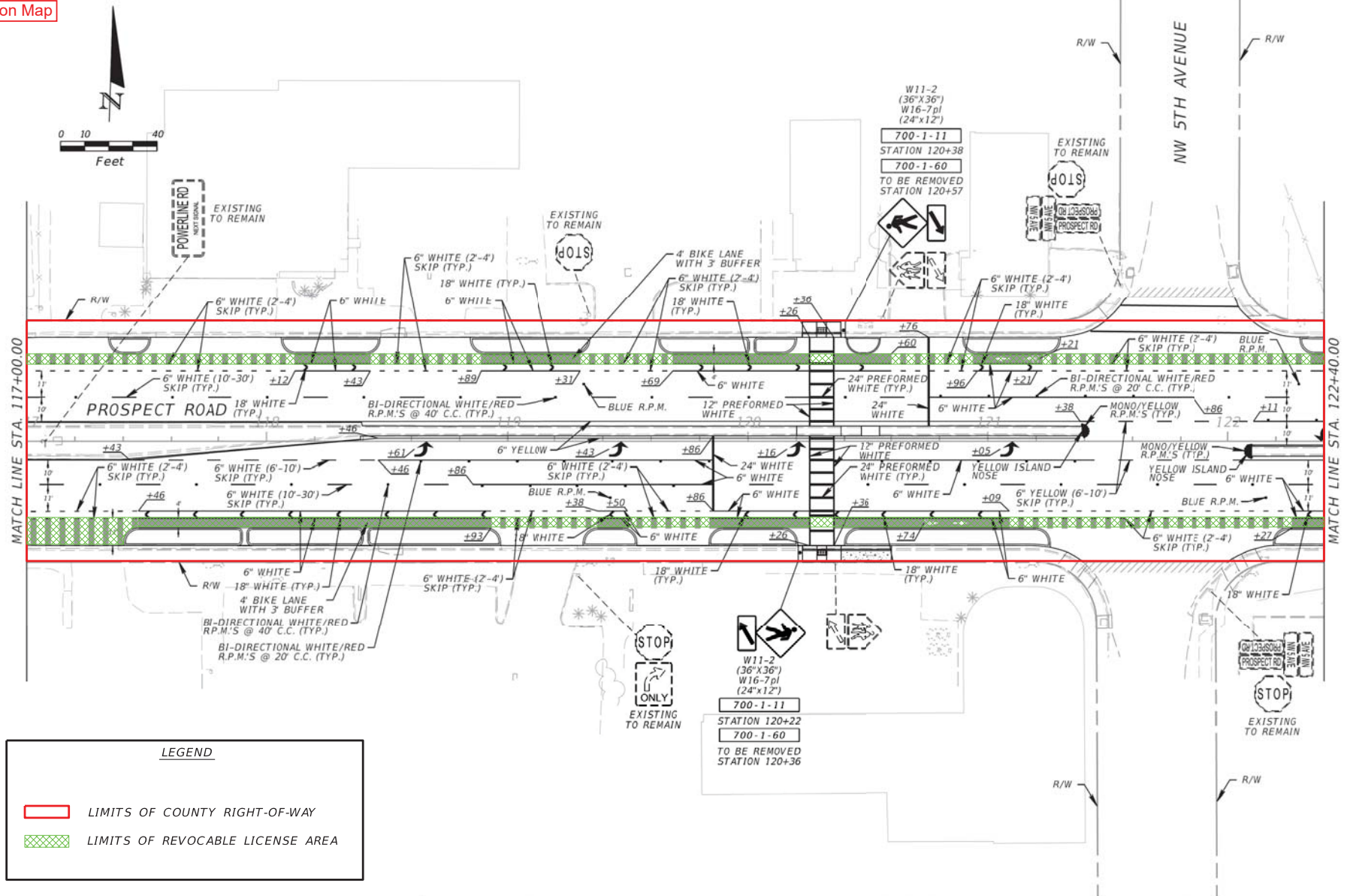
SHEET NO.

S-7

SUSERS      SQUARES      STIPES      SPFILES



Location Map



**LEGEND**

- LIMITS OF COUNTY RIGHT-OF-WAY
- LIMITS OF REVOCABLE LICENSE AREA

REVISIONS	
DATE	DESCRIPTION

PUBLIC WORKS DEPARTMENT  
TRAFFIC ENGINEERING DIVISION  
2300 WEST COMMERCIAL BLVD  
FORT LAUDERDALE, FL 33309



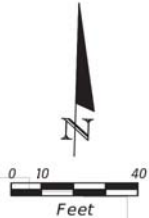
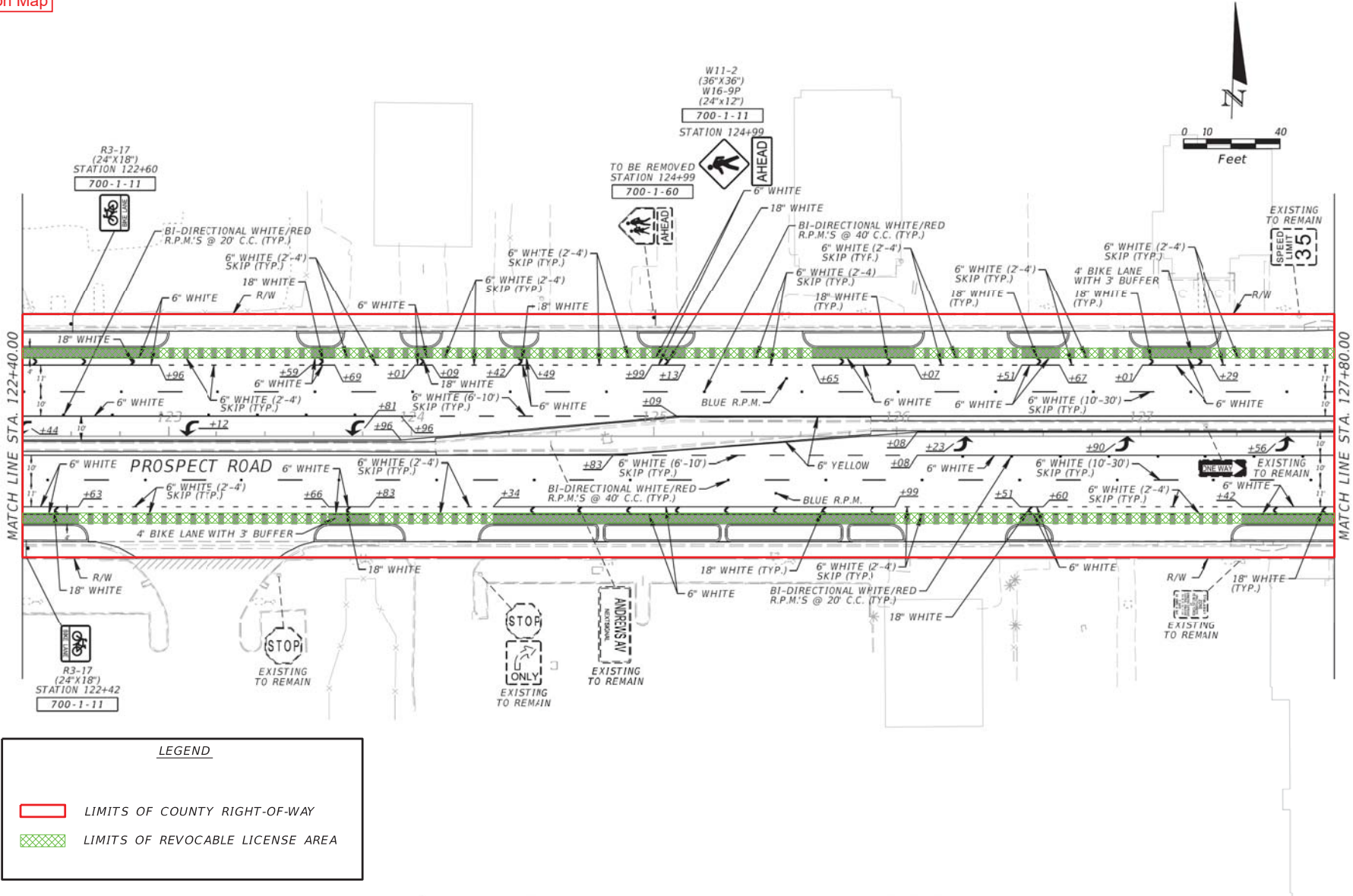
PUBLIC WORKS DEPARTMENT  
TRAFFIC ENGINEERING DIVISION  
COUNTY PROJECT NO.

**SIGNING AND PAVEMENT  
MARKING PLAN**

SHEET NO.  
S-8

SUSERS SDATES STITES SFILES

Location Map



**LEGEND**

- LIMITS OF COUNTY RIGHT-OF-WAY
- LIMITS OF REVOCABLE LICENSE AREA

REVISIONS	
DATE	DESCRIPTION

PUBLIC WORKS DEPARTMENT  
TRAFFIC ENGINEERING DIVISION  
2300 WEST COMMERCIAL BLVD  
FORT LAUDERDALE, FL 33309



PUBLIC WORKS DEPARTMENT  
TRAFFIC ENGINEERING DIVISION

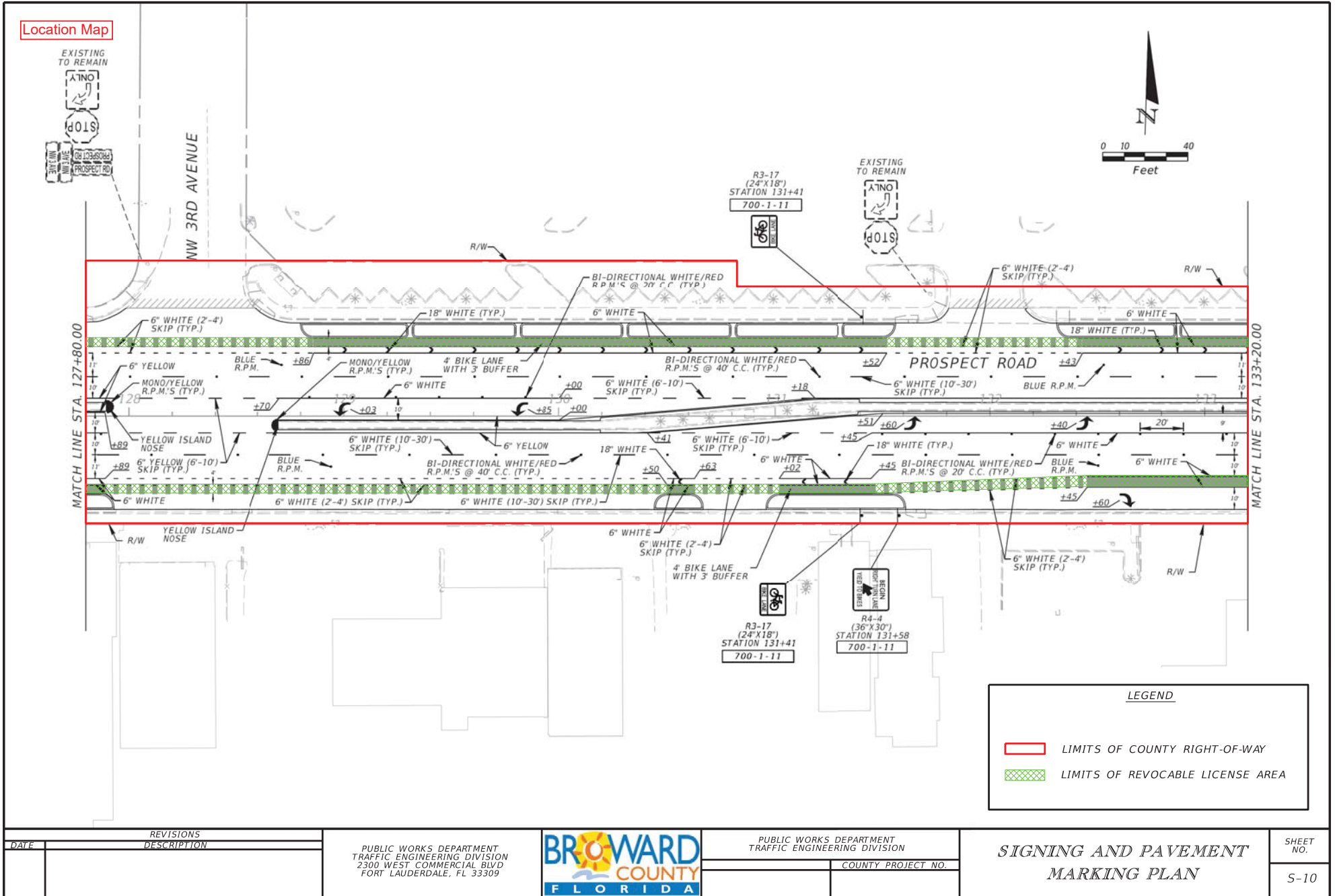
COUNTY PROJECT NO.

**SIGNING AND PAVEMENT  
MARKING PLAN**

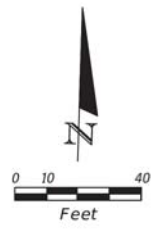
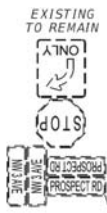
SHEET NO.

S-9

SUSERS      SDATES      STIMES      SFILES



Location Map



**LEGEND**

- LIMITS OF COUNTY RIGHT-OF-WAY
- LIMITS OF REVOCABLE LICENSE AREA

DATE	REVISIONS DESCRIPTION

PUBLIC WORKS DEPARTMENT  
TRAFFIC ENGINEERING DIVISION  
2300 WEST COMMERCIAL BLVD  
FORT LAUDERDALE, FL 33309



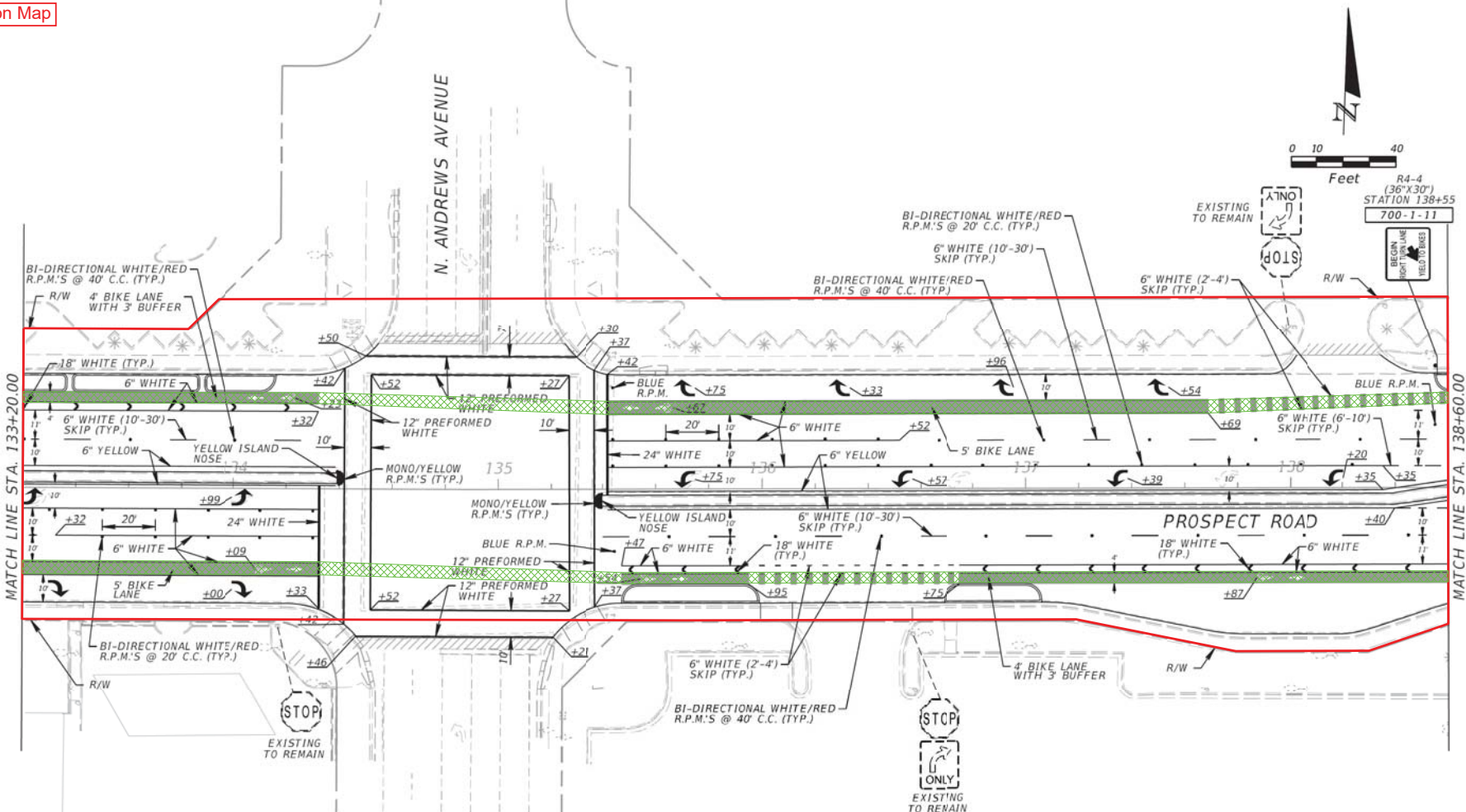
PUBLIC WORKS DEPARTMENT  
TRAFFIC ENGINEERING DIVISION  
COUNTY PROJECT NO.

**SIGNING AND PAVEMENT MARKING PLAN**

SHEET NO.  
S-10

SUSERS SDATES STIMES SFILES

Location Map



LEGEND

LIMITS OF COUNTY RIGHT-OF-WAY

LIMITS OF REVOCABLE LICENSE AREA

REVISIONS	
DATE	DESCRIPTION

PUBLIC WORKS DEPARTMENT  
TRAFFIC ENGINEERING DIVISION  
2300 WEST COMMERCIAL BLVD  
FORT LAUDERDALE, FL 33309



PUBLIC WORKS DEPARTMENT  
TRAFFIC ENGINEERING DIVISION

COUNTY PROJECT NO.

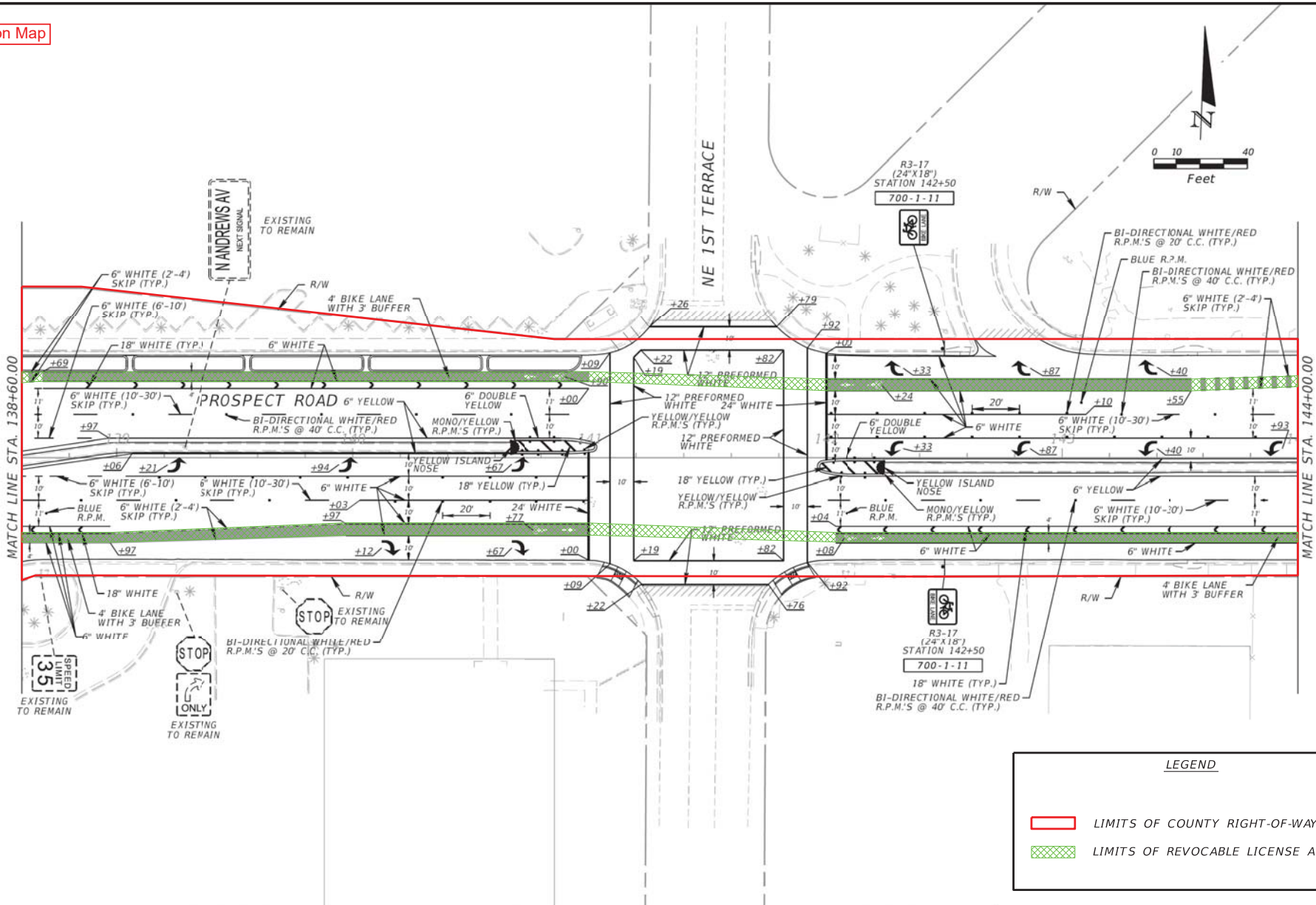
*SIGNING AND PAVEMENT  
MARKING PLAN*

SHEET NO.

S-11

SUSERS      SDATES      STIMES      SFILES

Location Map



LEGEND

LIMITS OF COUNTY RIGHT-OF-WAY

LIMITS OF REVOCABLE LICENSE AREA

DATE	REVISIONS DESCRIPTION

PUBLIC WORKS DEPARTMENT  
TRAFFIC ENGINEERING DIVISION  
2300 WEST COMMERCIAL BLVD  
FORT LAUDERDALE, FL 33309



PUBLIC WORKS DEPARTMENT  
TRAFFIC ENGINEERING DIVISION

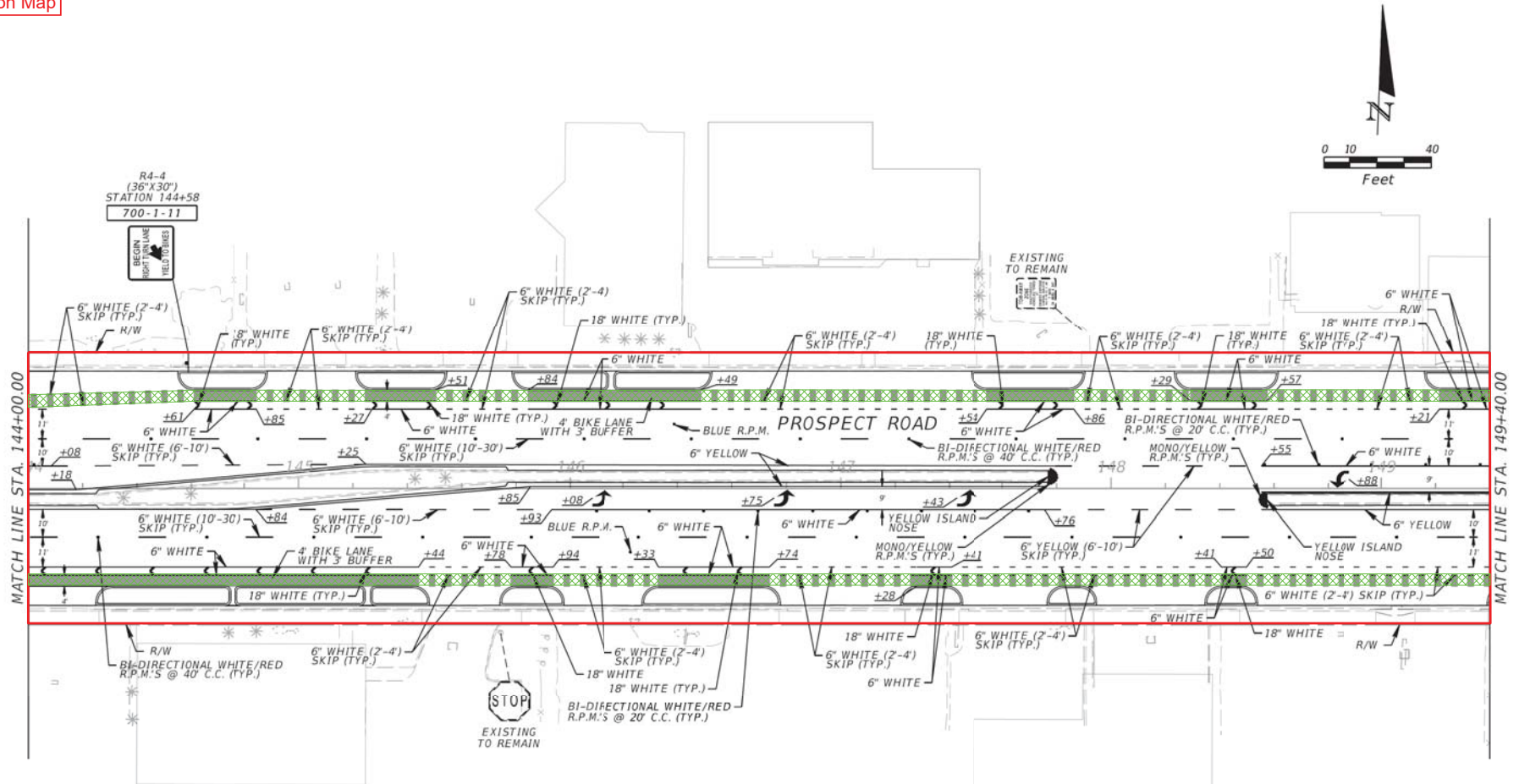
COUNTY PROJECT NO.

**SIGNING AND PAVEMENT  
MARKING PLAN**

SHEET NO.  
S-12

SUSERS      SQUARES      STILES      SPFILES

Location Map



LEGEND

- LIMITS OF COUNTY RIGHT-OF-WAY
- LIMITS OF REVOCABLE LICENSE AREA

REVISIONS	
DATE	DESCRIPTION

PUBLIC WORKS DEPARTMENT  
TRAFFIC ENGINEERING DIVISION  
2300 WEST COMMERCIAL BLVD  
FORT LAUDERDALE, FL 33309



PUBLIC WORKS DEPARTMENT  
TRAFFIC ENGINEERING DIVISION

COUNTY PROJECT NO.

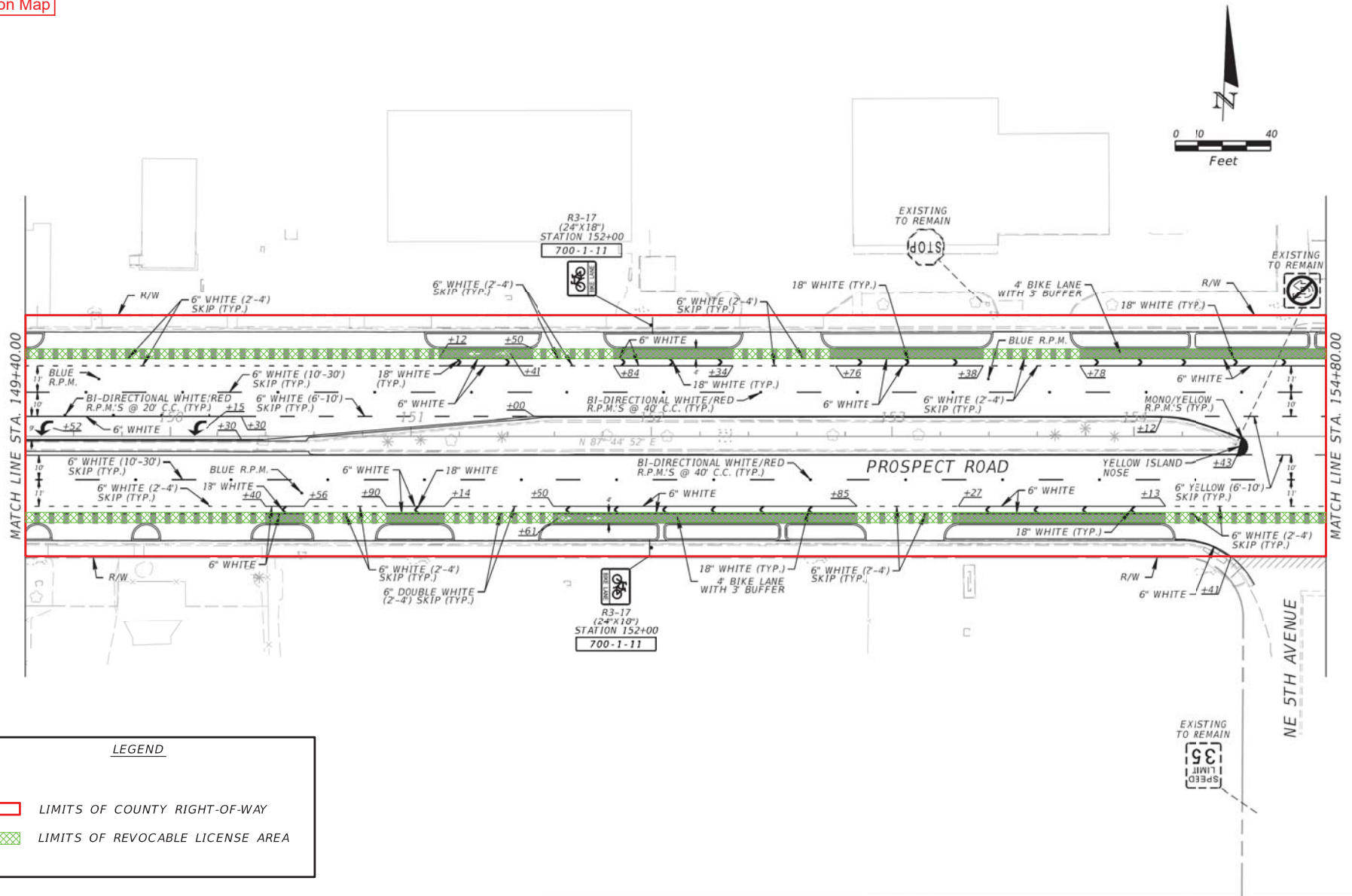
SIGNING AND PAVEMENT  
MARKING PLAN

SHEET NO.

S-13

SUSERS      SQUARES      STIPES      SPFILES

Location Map



**LEGEND**

LIMITS OF COUNTY RIGHT-OF-WAY

LIMITS OF REVOCABLE LICENSE AREA

REVISIONS	
DATE	DESCRIPTION

PUBLIC WORKS DEPARTMENT  
TRAFFIC ENGINEERING DIVISION  
2300 WEST COMMERCIAL BLVD  
FORT LAUDERDALE, FL 33309



PUBLIC WORKS DEPARTMENT  
TRAFFIC ENGINEERING DIVISION

COUNTY PROJECT NO.

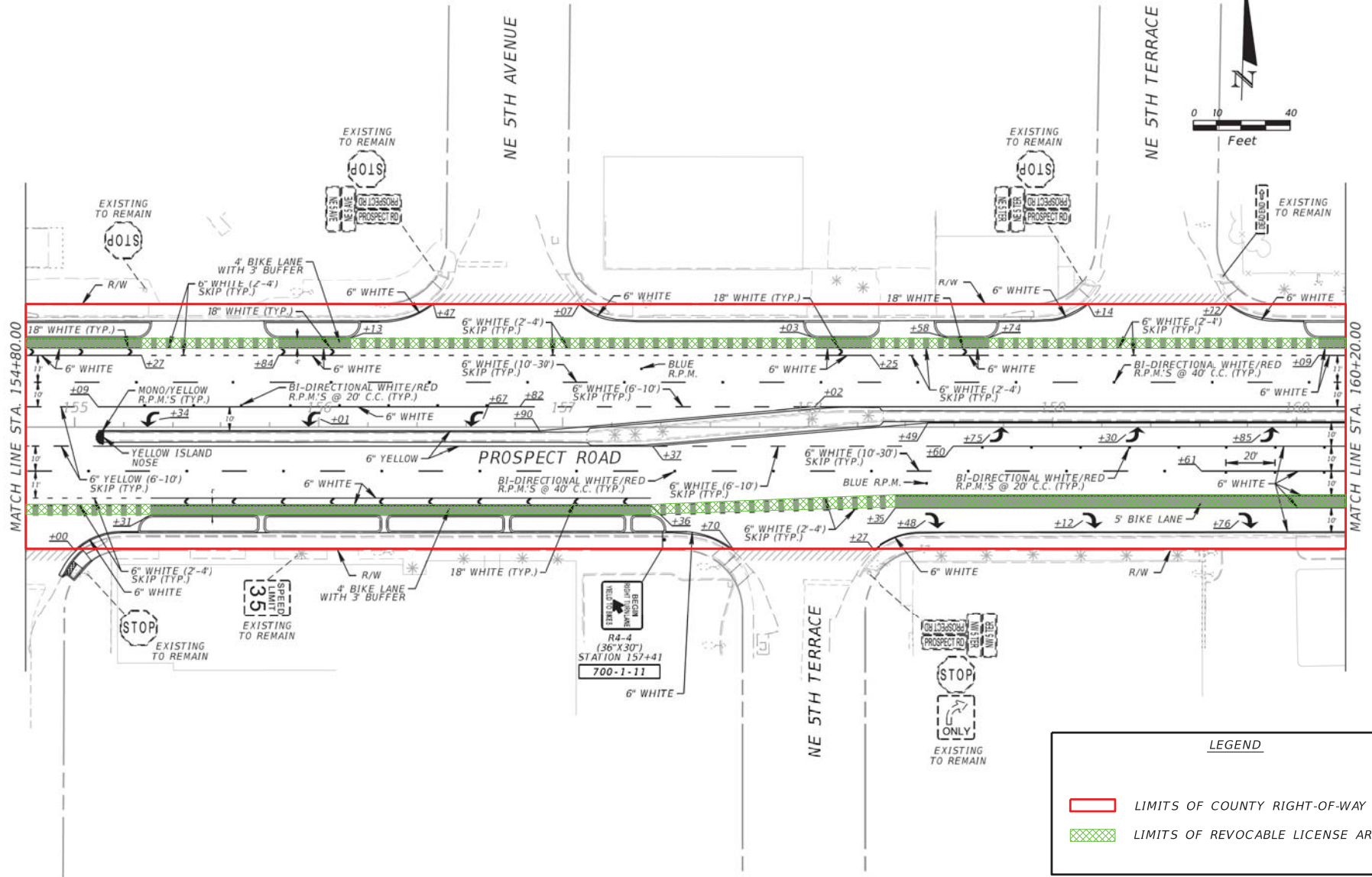
**SIGNING AND PAVEMENT  
MARKING PLAN**

SHEET NO.

S-14

SUSERS      SDATES      STIMES      SFILES

Location Map



**LEGEND**

- LIMITS OF COUNTY RIGHT-OF-WAY
- LIMITS OF REVOCABLE LICENSE AREA

DATE	REVISIONS DESCRIPTION

PUBLIC WORKS DEPARTMENT  
TRAFFIC ENGINEERING DIVISION  
2300 WEST COMMERCIAL BLVD  
FORT LAUDERDALE, FL 33309



PUBLIC WORKS DEPARTMENT  
TRAFFIC ENGINEERING DIVISION  
COUNTY PROJECT NO.

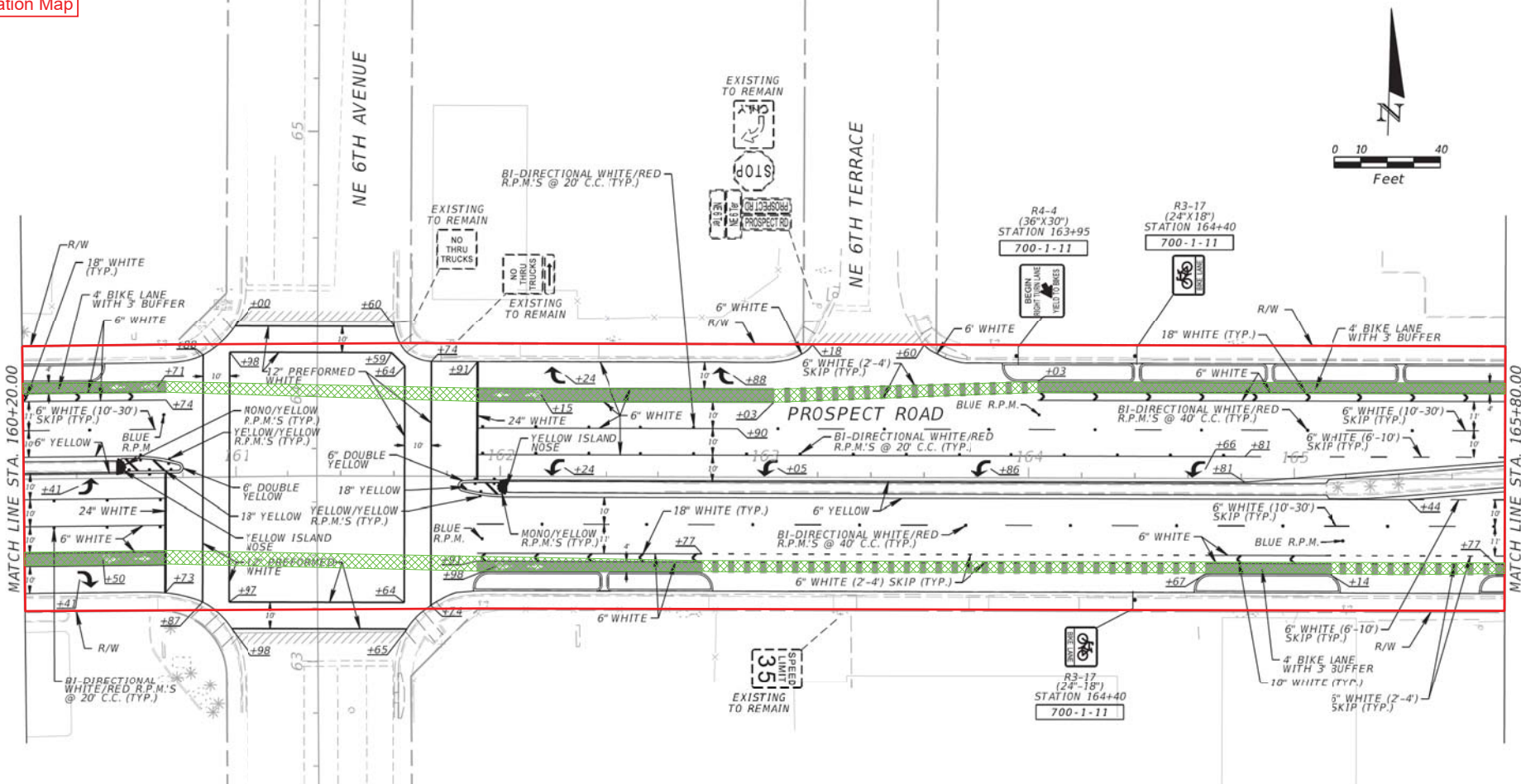
**SIGNING AND PAVEMENT MARKING PLAN**

SHEET NO.  
S-15

SUSERS SQUARES STILES STFILES



Location Map



LEGEND

LIMITS OF COUNTY RIGHT-OF-WAY

LIMITS OF REVOCABLE LICENSE AREA

DATE	REVISIONS DESCRIPTION

PUBLIC WORKS DEPARTMENT  
TRAFFIC ENGINEERING DIVISION  
2300 WEST COMMERCIAL BLVD  
FORT LAUDERDALE, FL 33309



PUBLIC WORKS DEPARTMENT  
TRAFFIC ENGINEERING DIVISION

COUNTY PROJECT NO.

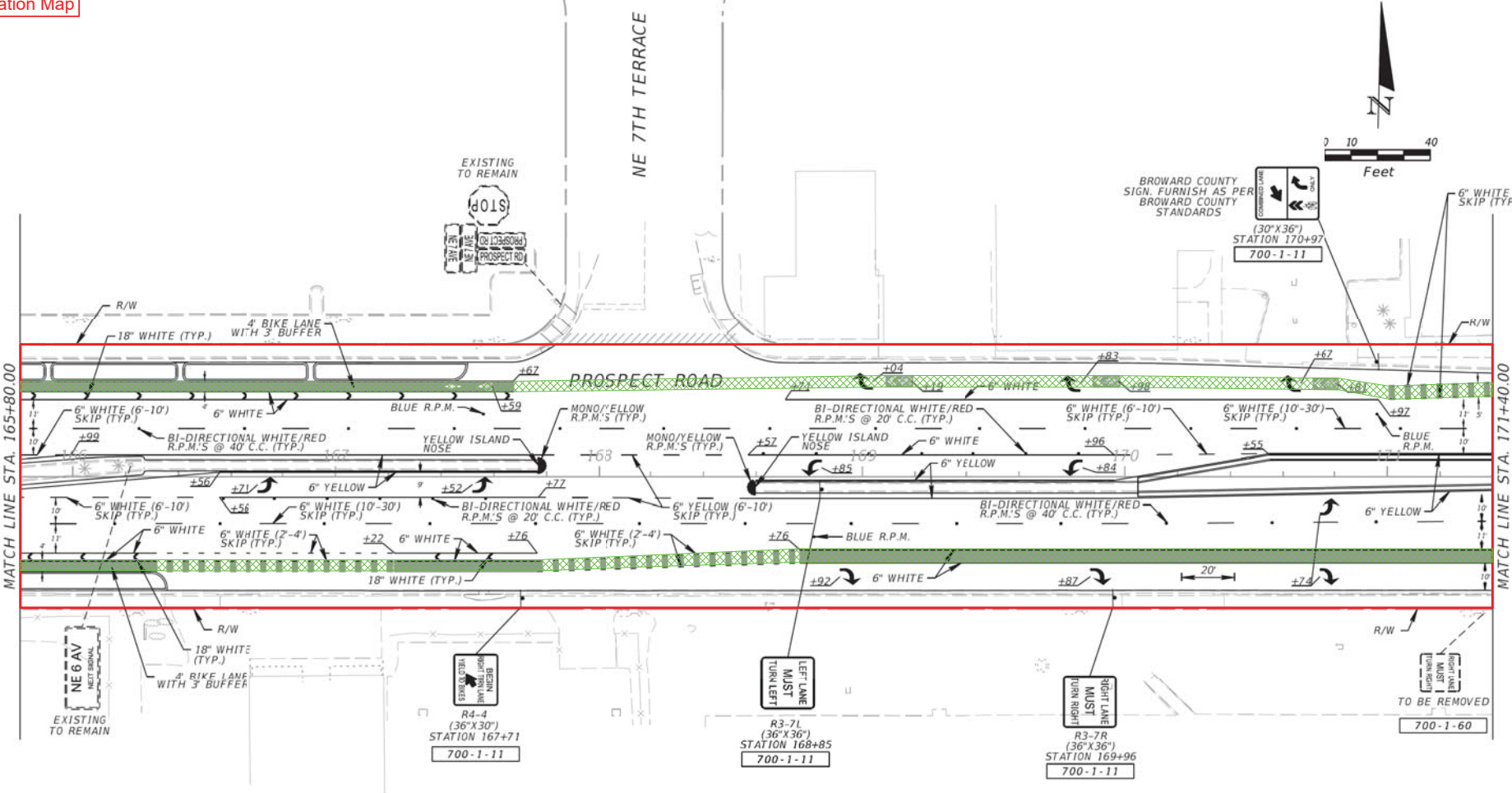
**SIGNING AND PAVEMENT  
MARKING PLAN**

SHEET NO.

5-16

SUSERS      SQUARES      STRIPES      SPFILES

Location Map



BROWARD COUNTY  
SIGN. FURNISH AS PER  
BROWARD COUNTY  
STANDARDS

(30"X36")  
STATION 170+97  
700-1-11

LEGEND	
	LIMITS OF COUNTY RIGHT-OF-WAY
	LIMITS OF REVOCABLE LICENSE AREA

REVISIONS	
DATE	DESCRIPTION

PUBLIC WORKS DEPARTMENT  
TRAFFIC ENGINEERING DIVISION  
2300 WEST COMMERCIAL BLVD  
FORT LAUDERDALE, FL 33309



PUBLIC WORKS DEPARTMENT  
TRAFFIC ENGINEERING DIVISION

COUNTY PROJECT NO.
--------------------

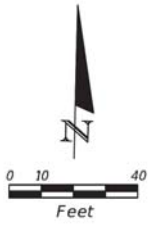
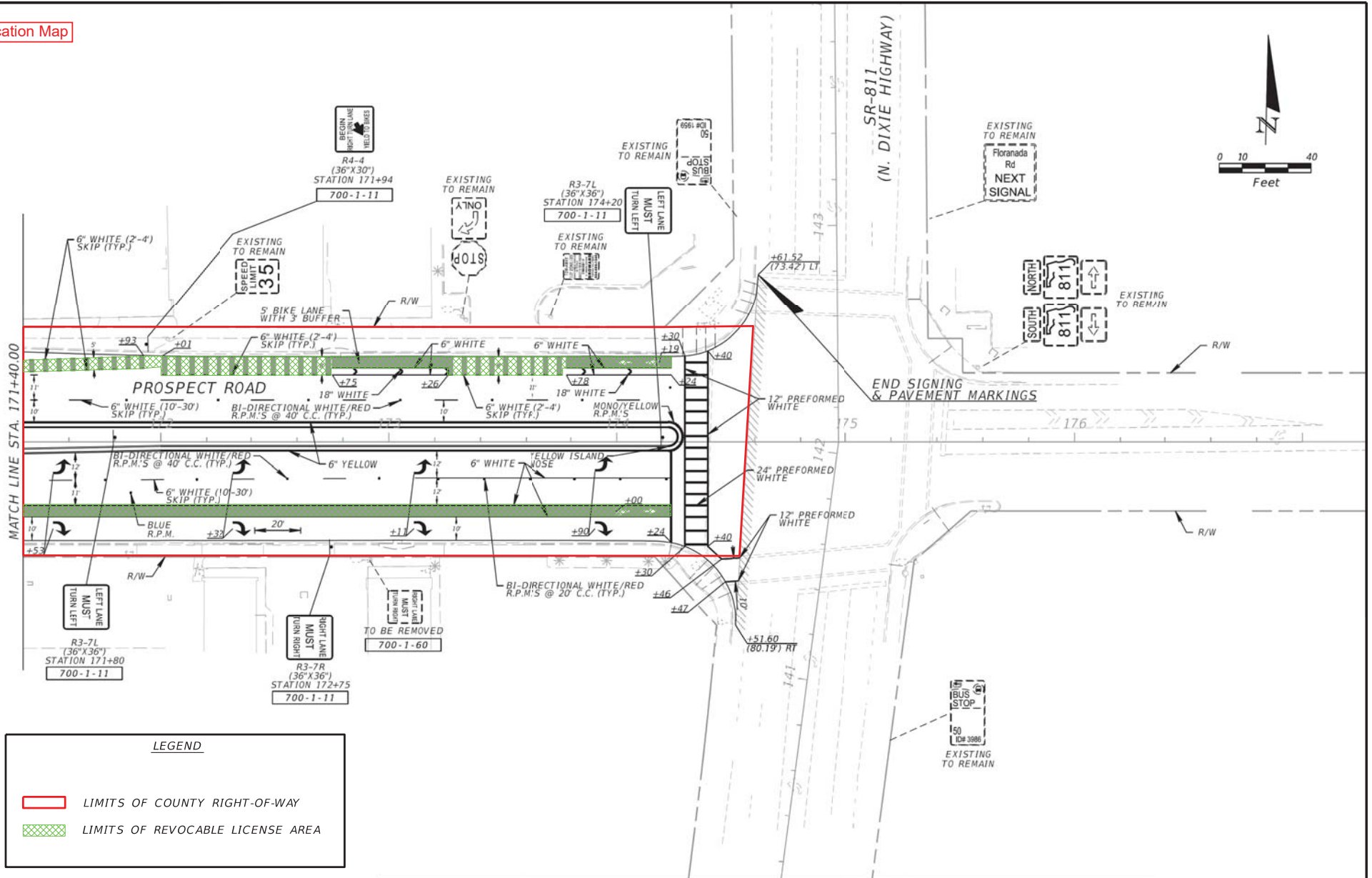
SIGNING AND PAVEMENT  
MARKING PLAN

SHEET NO.

S-17

SUSERS SDATES STIMES SFILES

Location Map



**LEGEND**

- LIMITS OF COUNTY RIGHT-OF-WAY
- LIMITS OF REVOCABLE LICENSE AREA

REVISIONS	
DATE	DESCRIPTION

PUBLIC WORKS DEPARTMENT  
TRAFFIC ENGINEERING DIVISION  
2300 WEST COMMERCIAL BLVD  
FORT LAUDERDALE, FL 33309



PUBLIC WORKS DEPARTMENT TRAFFIC ENGINEERING DIVISION	
	COUNTY PROJECT NO.

**SIGNING AND PAVEMENT  
MARKING PLAN**

SHEET NO.  
S-18