

## EXHIBIT 2

### ORDINANCE NO.

1  
2 AN ORDINANCE OF THE BOARD OF COUNTY COMMISSIONERS OF BROWARD  
3 COUNTY, FLORIDA, ADOPTING AN AMENDMENT TO THE WETLANDS MAP OF THE  
4 NATURAL RESOURCE MAP SERIES OF THE BROWARD COUNTY  
5 COMPREHENSIVE PLAN; AND PROVIDING FOR SEVERABILITY AND AN  
6 EFFECTIVE DATE.

7 (Sponsored by the Board of County Commissioners)  
8

9 WHEREAS, Broward County adopted the Broward County Comprehensive Plan  
10 on April 25, 2017 (the Plan);

11 WHEREAS, the Department of Economic Opportunity has found the Broward  
12 County Comprehensive Plan in compliance with the Community Planning Act;

13 WHEREAS, Broward County now wishes to propose an amendment to the  
14 Wetlands Map of the Natural Resource Map Series of the Plan;

15 WHEREAS, the Planning Council, as the local planning agency for the Broward  
16 County Land Use Plan, held its hearing on February 24, 2022, with due public notice;

17 WHEREAS, the Board of County Commissioners held its transmittal public hearing  
18 on April 25, 2022, having complied with the notice requirements specified in  
19 Section 163.3184(11), Florida Statutes;

20 WHEREAS, the Board of County Commissioners held an adoption public hearing  
21 on September 8, 2022, at 10:00 a.m. [also complying with the notice requirements  
22 specified in Section 163.3184(11), Florida Statutes] at which public comment was

23 accepted and comments of the Department of Economic Opportunity, South Florida  
24 Regional Planning Council, South Florida Water Management District, Department of  
25 Environmental Protection, Department of State, Department of Transportation, Fish and  
26 Wildlife Conservation Commission, Department of Agriculture and Consumer Services,  
27 and Department of Education, as applicable, were considered; and

28 WHEREAS, the Board of County Commissioners, after due consideration of all  
29 matters, hereby finds that the following amendment to the Broward County  
30 Comprehensive Plan is consistent with the State Plan, Regional Plan, and the Broward  
31 County Comprehensive Plan; complies with the requirements of the Community Planning  
32 Act; and is in the best interests of the health, safety, and welfare of the residents of  
33 Broward County,

34 BE IT ORDAINED BY THE BOARD OF COUNTY COMMISSIONERS OF  
35 BROWARD COUNTY, FLORIDA

36 Section 1. The Broward County Comprehensive Plan is hereby amended by  
37 Amendment PCNRM 22-1, which is an amendment to the Wetlands Map of the Natural  
38 Resource Map Series, as set forth in Exhibit A, attached hereto and incorporated herein:

39 Section 2. Severability.

40 If any portion of this Ordinance is determined by any court to be invalid, the invalid  
41 portion will be stricken, and such striking will not affect the validity of the remainder of this  
42 Ordinance. If any court determines that this Ordinance, in whole or in part, cannot be  
43 legally applied to any individual, group, entity, property, or circumstance, such

44 determination will not affect the applicability of this Ordinance to any other individual,  
45 group, entity, property, or circumstance.

46 Section 3. Effective Date.

47 (a) The effective date of the plan amendment set forth in this Ordinance shall  
48 be the latter of:

49 (1) Thirty-one (31) days after the Department of Economic Opportunity notifies  
50 Broward County that the plan amendment package is complete;

51 (2) If the plan amendment is timely challenged, the date a final order is issued  
52 by the Administration Commission or the Department of Economic  
53 Opportunity finding the amendment to be in compliance; or

54 (3) If the Department of Economic Opportunity or the Administration  
55 Commission finds the amendment to be in noncompliance, pursuant to  
56 Section 163.3184(8)(b), Florida Statutes, the date the Board of County  
57 Commissioners nonetheless, elects to make the plan amendment effective  
58 notwithstanding potential statutory sanctions.

59 (b) This Ordinance is effective as of the date provided by law.

ENACTED

FILED WITH THE DEPARTMENT OF STATE

EFFECTIVE

Approved as to form and legal sufficiency:  
Andrew J. Meyers, County Attorney

By: /s/ Maite Azcoitia 08/02/2022  
Maite Azcoitia (date)  
Deputy County Attorney

MA/gmb  
08/02/2022  
PCNRM22-1 Update the Wetland Map Ord.  
#80041

# EXHIBIT A

**SECTION I**  
**AMENDMENT REPORT**  
**BROWARD COUNTY LAND USE PLAN**  
**PROPOSED AMENDMENT PCNRM 22-1**

**(NATURAL RESOURCE MAP SERIES -  
EASTERN BROWARD COUNTY WETLANDS MAP)**

**RECOMMENDATIONS/ACTIONS**

**DATE**

I. Planning Council Staff Transmittal Recommendation February 15, 2022

Planning Council staff recommends approval of the proposed amendment to the Natural Resource Map Series - Eastern Broward County Wetlands Map. **See Attachment 1.**

As the Planning Council is aware, the Broward County Charter requires at least one Planning Council public hearing and Article 1.2(A) of the *Administrative Rules Document: BrowardNext* outlines the following circumstances in which a second Planning Council public hearing may be recommended or required:

- (1) At its initial public hearing, the Planning Council takes an action to recommend denial of a proposed amendment; or
- (2) At its initial public hearing, the Planning Council takes an action to recommend approval subject to meeting specific criteria or policy prior to a second Planning Council public hearing; or
- (3) At its initial public hearing, the Planning Council votes by a majority of the members present with a minimum of six (6) affirmative votes for a second Planning Council public hearing; or
- (4) If the County Commission requests by a vote of the majority of members present to request a second Planning Council public hearing; or
- (5) If an objection or comment on adverse impacts to important state resources or facilities is issued during the State of Florida Chapter 163 review process; or
- (6) If State of Florida Chapter 163 requires or is modified to require a second local planning agency public hearing.

**If the Planning Council chooses to require a second Planning Council public hearing per Article 1.2(A)(1)(2) or (3), such recommendation must be made as part of its motion.**

**RECOMMENDATIONS/ACTIONS (continued)**

*II. Planning Council Transmittal Recommendation February 24, 2022*

Approval per Planning Council staff transmittal recommendation, including not requiring a second Planning Council public hearing. (Vote of the board; Unanimous; 11-0: Blackwelder, Castillo, Gomez, Hardin, Horland, Levy, Parness, Rich, Ryan, Williams and DiGiorgio)

*III. County Commission Transmittal Recommendation April 26, 2022*

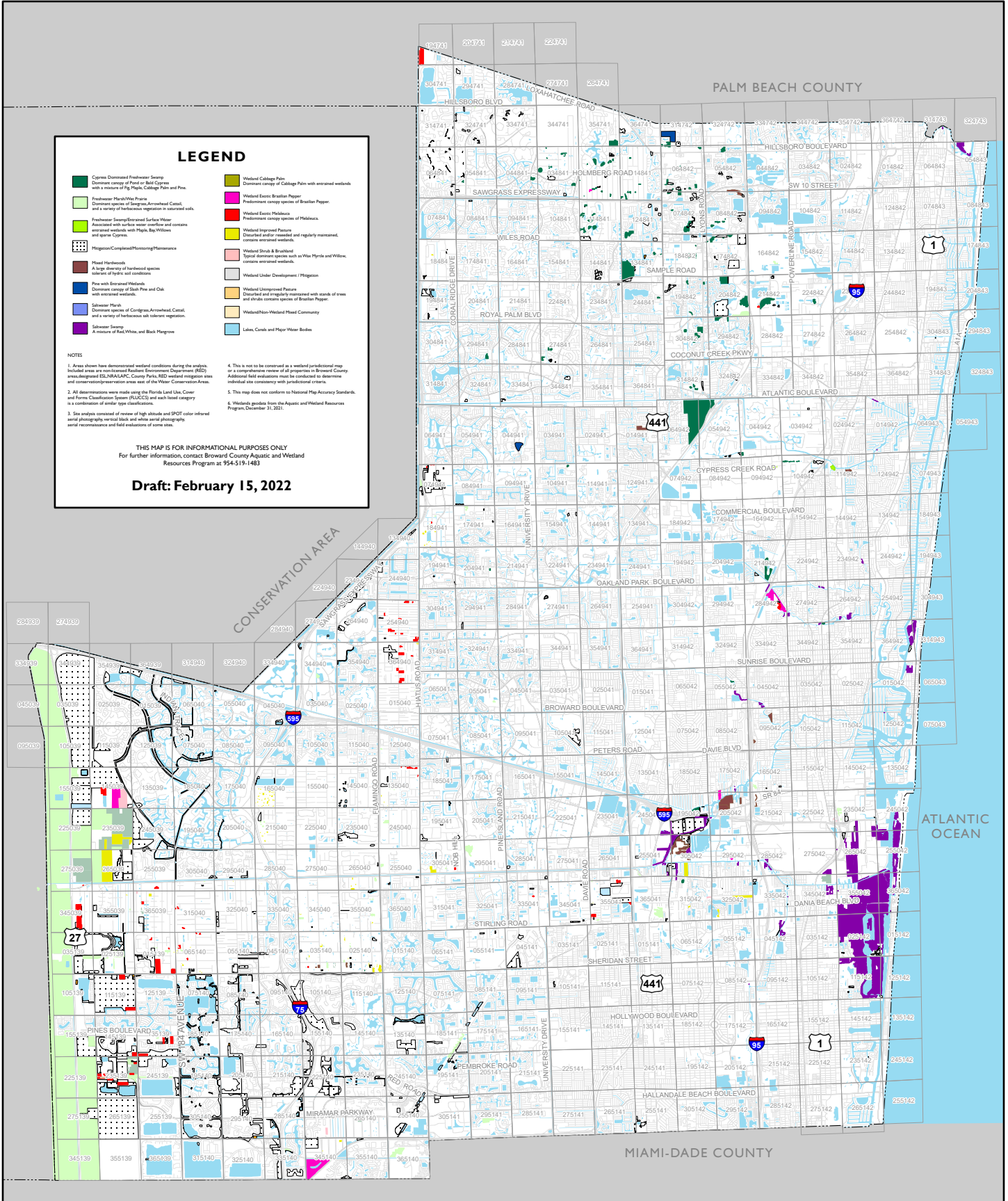
Approval per Planning Council transmittal recommendation.

*IV. Summary of State of Florida Review Agency Comments May 27, 2022*

The State of Florida Review Agencies issued no comments or objections regarding the proposed amendment.

# ATTACHMENT 1

## BROWARD COUNTY LAND USE PLAN NATURAL RESOURCE MAP SERIES Eastern Broward County Wetlands



### LEGEND

Cypress Dominated Freshwater Swamp Dominant canopy of Pond or Salt Cypress with a mixture of Big Palm, Cabbage Palm and Pine.	Wetland Cabbage Palm Dominant canopy of Cabbage Palm with scattered wetlands.
Freshwater Marsh/Water Prairie Dominant species of Sagras, Arrowhead Cattail, and a variety of herbaceous vegetation in scattered soils.	Wetland Exotic Brazilian Pepper Predominant canopy species of Brazilian Pepper.
Freshwater Swamp/Scattered Surface Water Associated with surface water, scattered and contains scattered wetlands, with Maple Bay Willow and other species.	Wetland Exotic Melaleuca Predominant canopy species of Melaleuca.
Wetland/Completed/Postponing/Remittance	Wetland Improved Pasture Disturbed and/or regularly maintained, contains scattered wetlands.
Flood Hardwoods A large diversity of hardwood species tolerant of hydro soil conditions.	Wetland Shrub & Brushland Typical dominant species such as Wax Myrtle and Willow, contains scattered wetlands.
Pine with Scattered Wetlands Dominant canopy of Slash Pine and Oak with scattered wetlands.	Wetland Under Development / Pristine
Saltwater Marsh Dominant species of Cordgrass, Arrowhead Cattail, and a variety of herbaceous salt tolerant vegetation.	Wetland Unimproved Pasture Disturbed and regularly maintained with stands of trees and shrubs contains species of Brazilian Pepper.
Saltwater Swamp A mixture of Red Willow and Black Mangrove	Lakes, Canals and Major Water Bodies

**NOTES**

1. Areas shown have demonstrated wetland conditions during the analysis. Included areas are non-located Resident Environmental Department (RED) areas designated (EIA, MIA, LEC, County Parks, RED) wetland mitigation areas and conservation/preservation areas east of the Water Conservation Areas.
2. All interpretations were made using the Florida Land Use, Cover and Form Classification System (FLUCCS) and each land category is a combination of similar type classifications.
3. Six aerials (consisted of color of high altitude and SPOT color infrared aerial photography vertical black and white aerial photography, aerial reconnaissance and field evaluations of some sites).
4. This is not to be construed as a wetland jurisdictional map or a comprehensive review of all properties in Broward County. Additional field evaluations must be conducted to determine individual site compliance with jurisdictional criteria.
5. This map does not conform to National Map Accuracy Standards.

THIS MAP IS FOR INFORMATIONAL PURPOSES ONLY  
For further information, contact Broward County Aquatic and Wetland Resources Program at 954-519-1483

**Draft: February 15, 2022**