

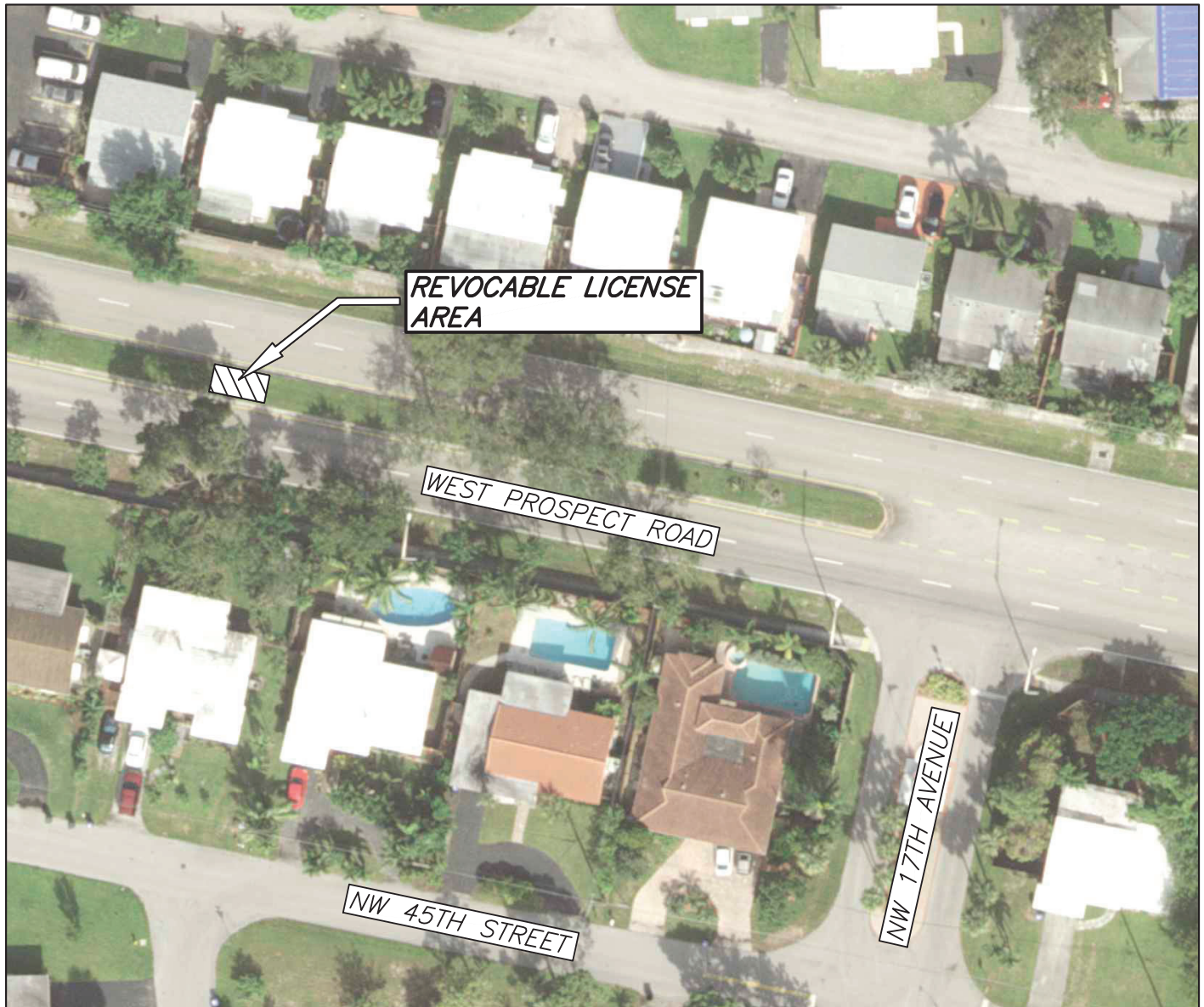
# LOCATION MAP

Exhibit 2  
Page 1 of 1

Revocable License Agreement between Broward County and City of Tamarac  
Broward County Reference No. 181008504



## EXHIBIT A



### LEGEND

 REVOCABLE LICENSE AREA IN THE MEDIAN OF WEST PROSPECT ROAD WEST OF NW 17TH AVENUE

SHEET 1 OF 1

Scale: Not To Scale	Drawn by: JAT	Date: 3-03-21	Checked by: CAD	Date: 3-03-21	File Location: E:\RW\Location Maps\AGREEMENTS\RLA-2018-11.dwg
------------------------	------------------	------------------	--------------------	------------------	--

BROWARD COUNTY HIGHWAY CONSTRUCTION & ENGINEERING DIVISION