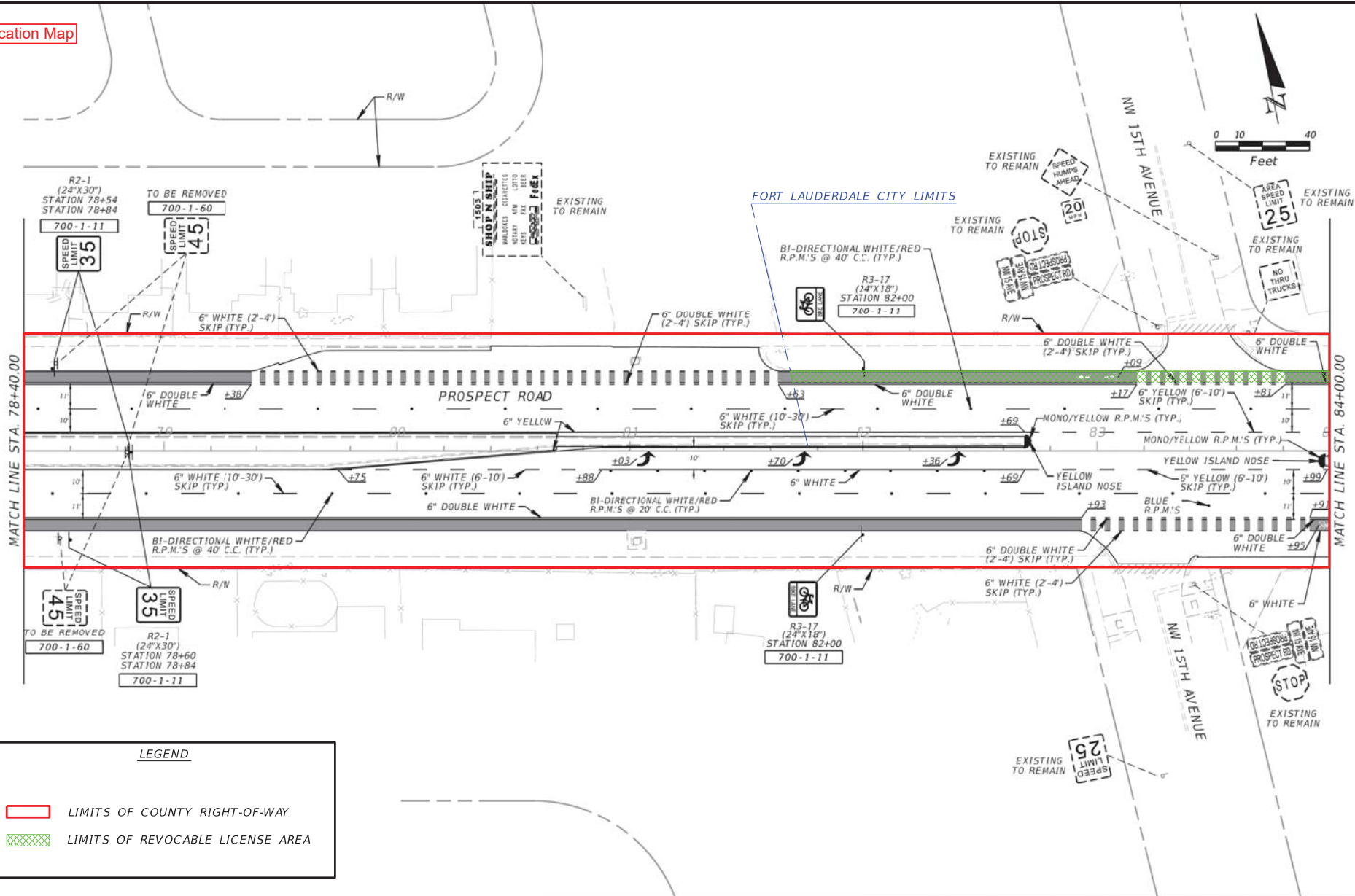


 Project Location

Prospect Road from west of NW 15th Ave to NW 10th Ave  
Precise Limits of Revocable License Area Shown on Following Pages

Location Map



LEGEND

- LIMITS OF COUNTY RIGHT-OF-WAY
- LIMITS OF REVOCABLE LICENSE AREA

REVISIONS	
DATE	DESCRIPTION

PUBLIC WORKS DEPARTMENT  
TRAFFIC ENGINEERING DIVISION  
2300 WEST COMMERCIAL BLVD  
FORT LAUDERDALE, FL 33309



PUBLIC WORKS DEPARTMENT  
TRAFFIC ENGINEERING DIVISION

COUNTY PROJECT NO.

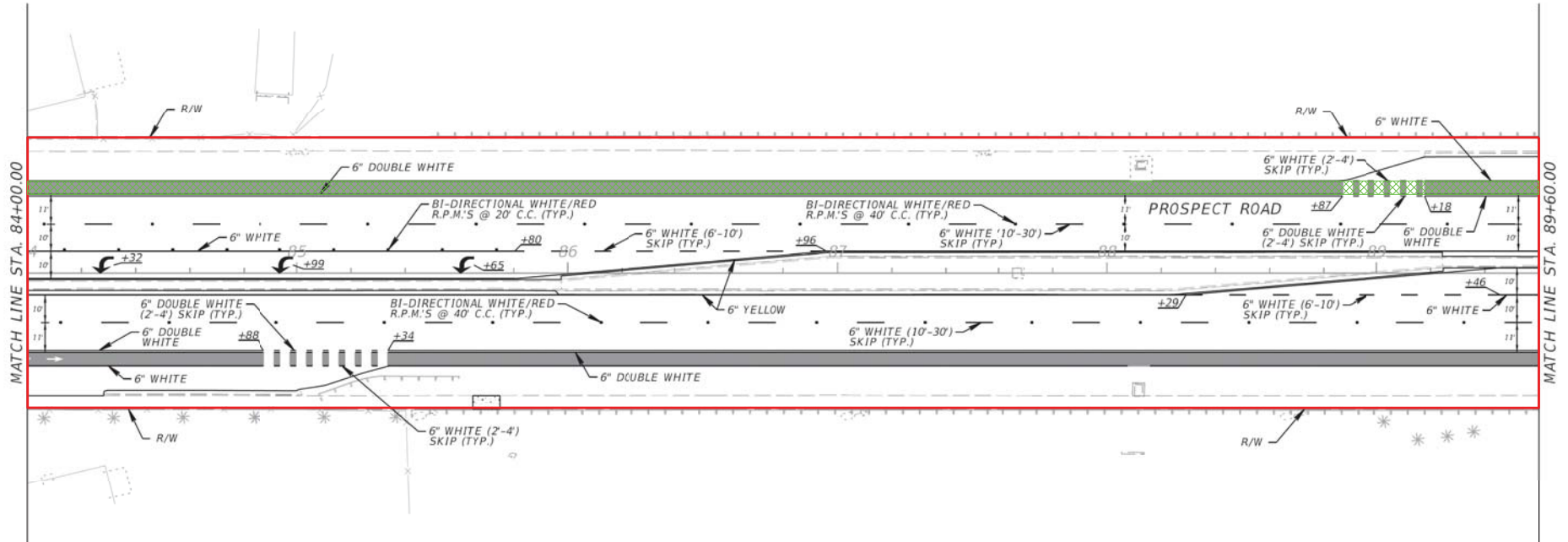
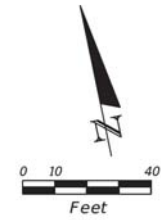
SIGNING AND PAVEMENT  
MARKING PLAN

SHEET NO.

S-1

SUSERS SDW/ES ST/MS SF/LES

Location Map



LEGEND

- LIMITS OF COUNTY RIGHT-OF-WAY
- LIMITS OF REVOCABLE LICENSE AREA

DATE	REVISIONS DESCRIPTION

PUBLIC WORKS DEPARTMENT  
TRAFFIC ENGINEERING DIVISION  
2300 WEST COMMERCIAL BLVD  
FORT LAUDERDALE, FL 33309



PUBLIC WORKS DEPARTMENT  
TRAFFIC ENGINEERING DIVISION

COUNTY PROJECT NO.

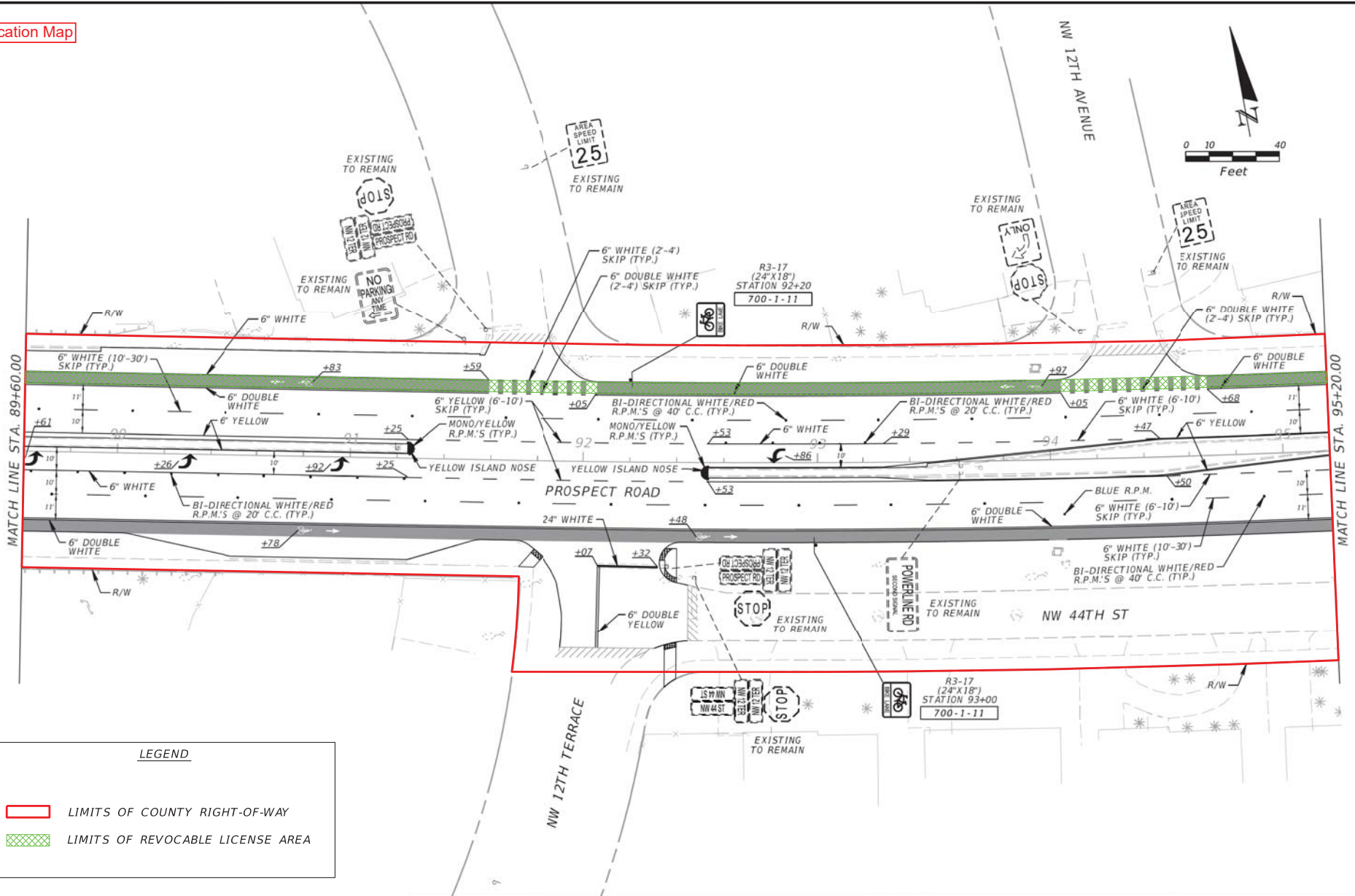
SIGNING AND PAVEMENT  
MARKING PLAN

SHEET NO.

S-2

SUSERS SDATES ST/MS SP/LES

Location Map



LEGEND

- LIMITS OF COUNTY RIGHT-OF-WAY
- LIMITS OF REVOCABLE LICENSE AREA

REVISIONS	
DATE	DESCRIPTION

PUBLIC WORKS DEPARTMENT  
TRAFFIC ENGINEERING DIVISION  
2300 WEST COMMERCIAL BLVD  
FORT LAUDERDALE, FL 33309



PUBLIC WORKS DEPARTMENT  
TRAFFIC ENGINEERING DIVISION

COUNTY PROJECT NO.

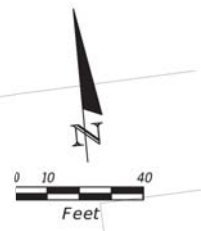
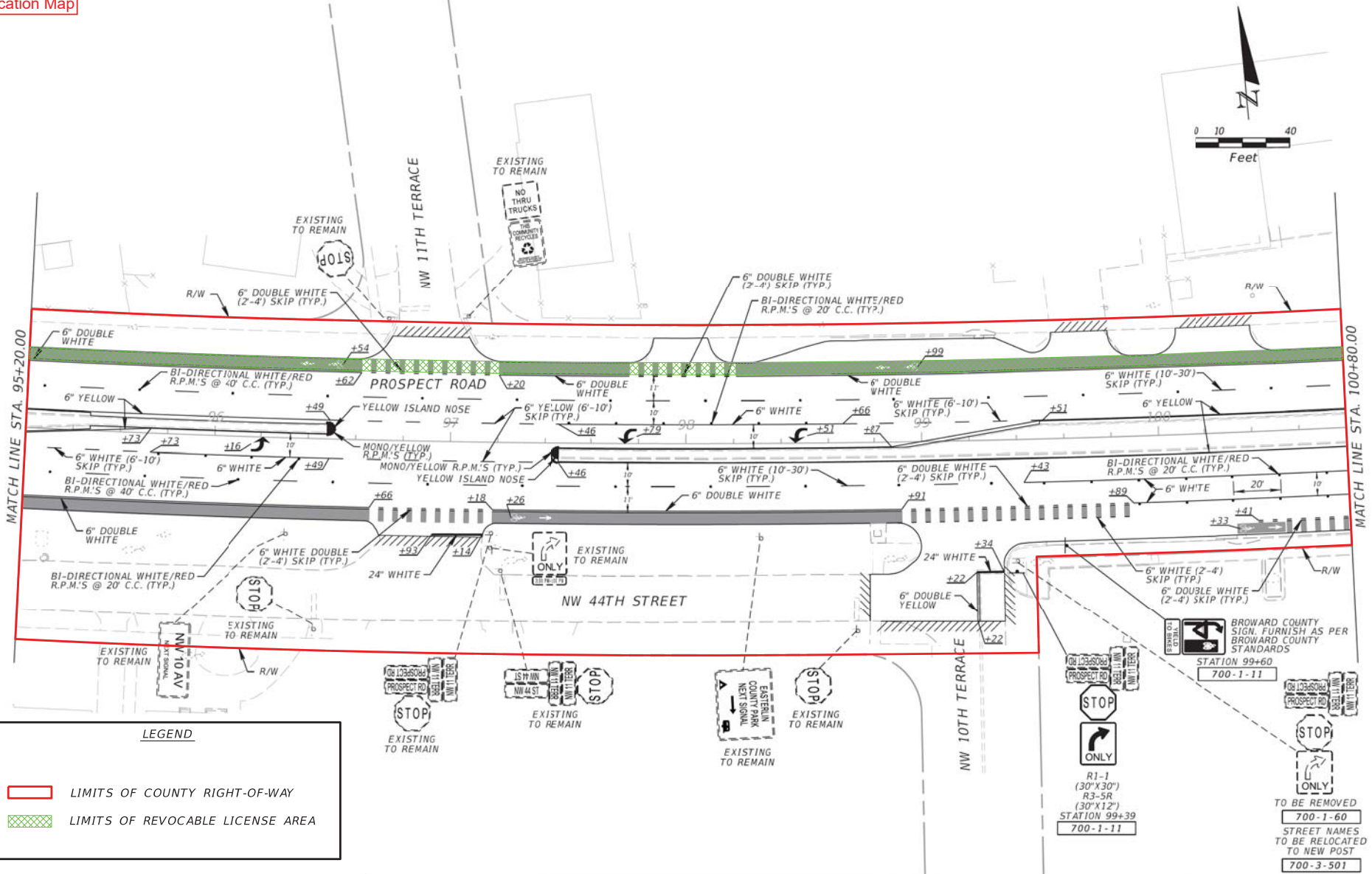
SIGNING AND PAVEMENT  
MARKING PLAN

SHEET NO.

S-3

SUSERS SDATES STITES SFILES

Location Map



**LEGEND**

LIMITS OF COUNTY RIGHT-OF-WAY

LIMITS OF REVOCABLE LICENSE AREA

**TO BE REMOVED**

R1-1 (30"x30")  
R3-5R (30"x12")  
R3-5L (30"x12")  
STATION 99+39  
700-1-11

**STATION 99+60**  
700-1-11

**700-1-60**  
STREET NAMES TO BE RELOCATED TO NEW POST  
700-3-501

REVISIONS	
DATE	DESCRIPTION

PUBLIC WORKS DEPARTMENT  
TRAFFIC ENGINEERING DIVISION  
2300 WEST COMMERCIAL BLVD  
FORT LAUDERDALE, FL 33309



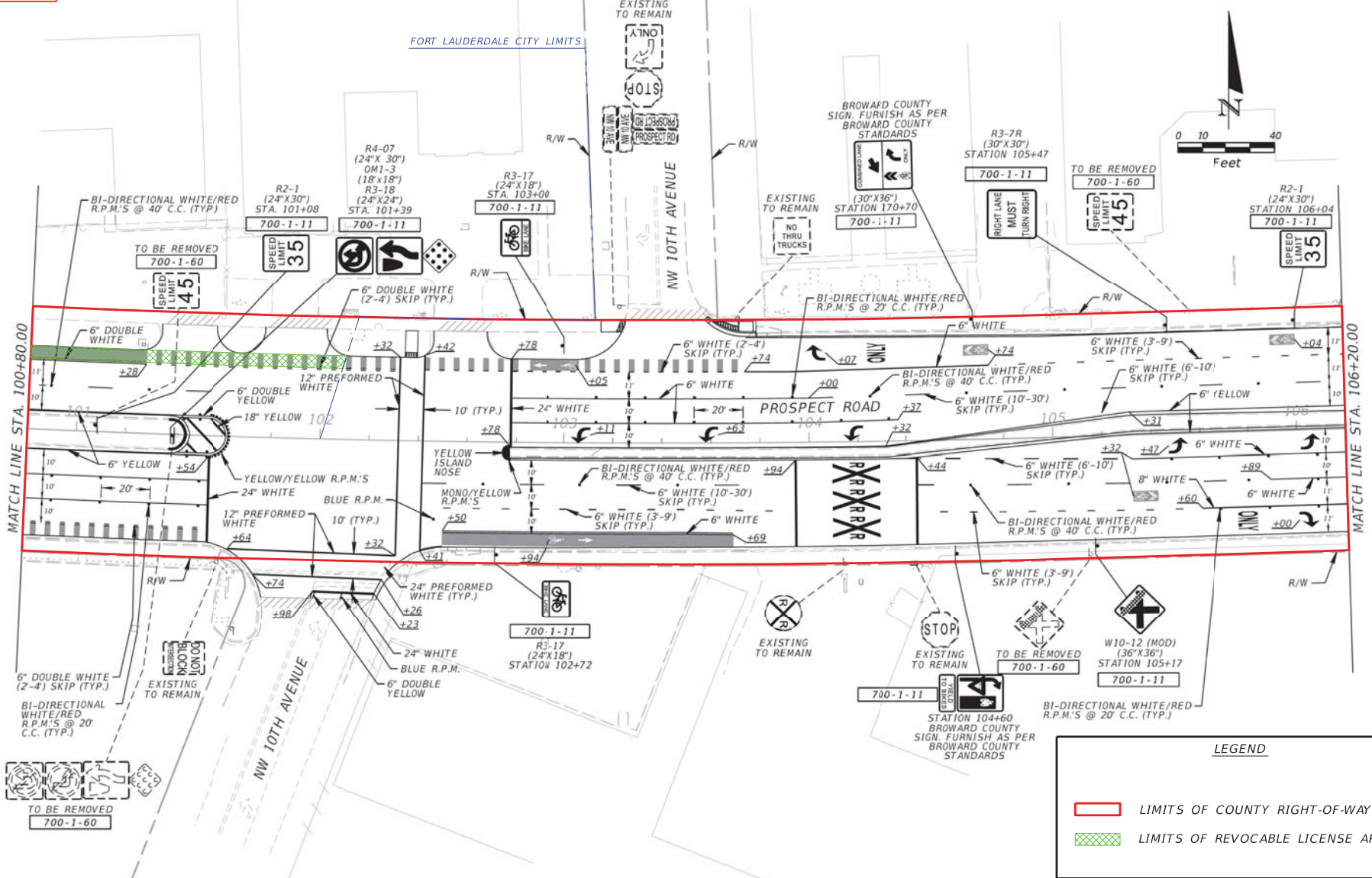
PUBLIC WORKS DEPARTMENT  
TRAFFIC ENGINEERING DIVISION  
COUNTY PROJECT NO.

**SIGNING AND PAVEMENT MARKING PLAN**

SHEET NO.

S-4

Location Map



**LEGEND**

- LIMITS OF COUNTY RIGHT-OF-WAY
- LIMITS OF REVOCABLE LICENSE AREA

DATE	REVISIONS DESCRIPTION

PUBLIC WORKS DEPARTMENT  
TRAFFIC ENGINEERING DIVISION  
2300 WEST COMMERCIAL BLVD  
FORT LAUDERDALE, FL 33309



PUBLIC WORKS DEPARTMENT  
TRAFFIC ENGINEERING DIVISION  
COUNTY PROJECT NO.

**SIGNING AND PAVEMENT MARKING PLAN**

SHEET NO.  
S-5

SUSERS      SDAFES      STIMES      SFILES