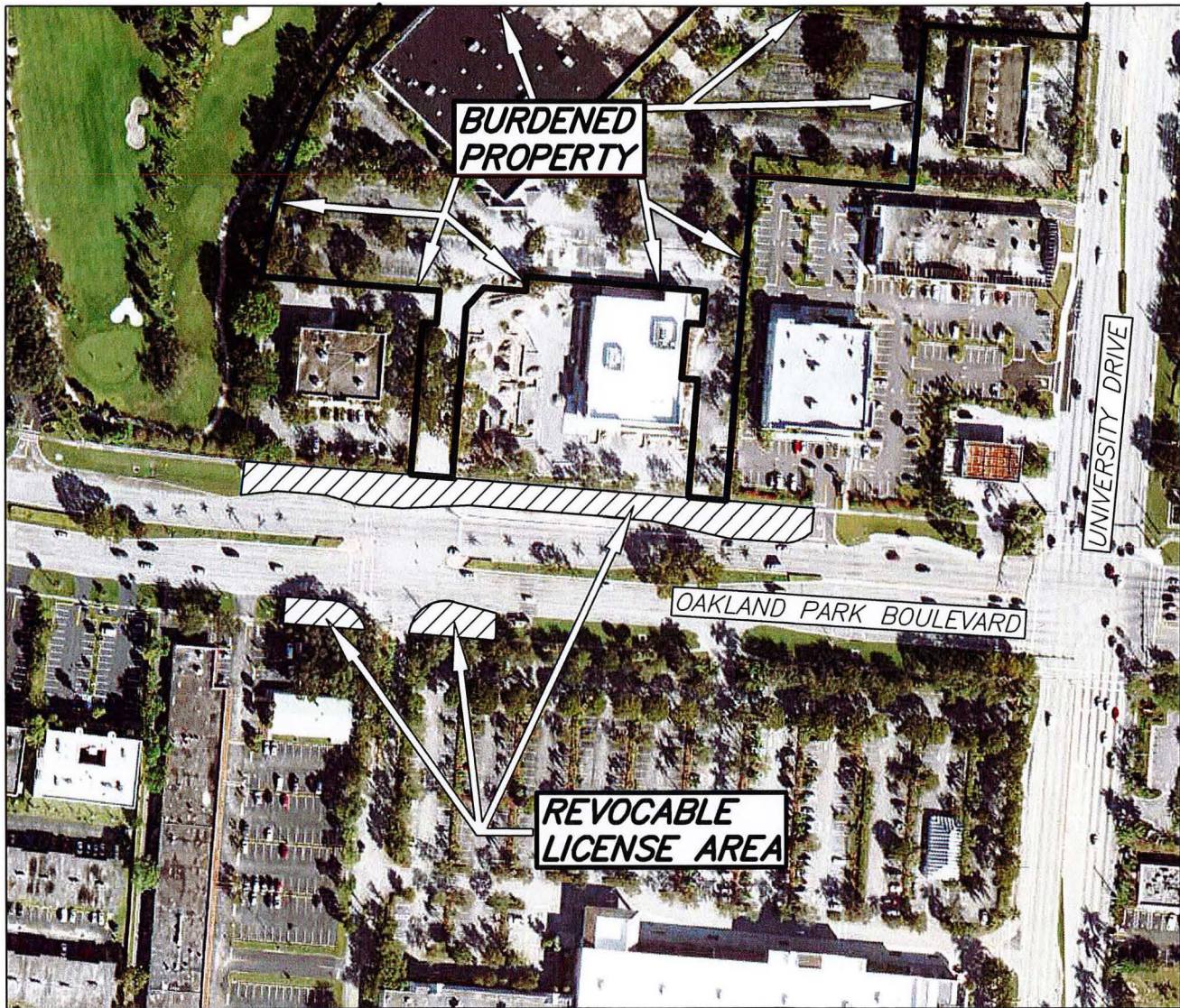


LOCATION MAP

Revocable License Agreement between Broward County and
Sunrise By Luxcom, LLC and the City of Sunrise

Broward County Reference No. 190612001



LEGEND



REVOCABLE LICENSE AREA

SHEET 1 OF 1

Scale:	Drawn by:	Date:	Checked by:	Date:	File Location:
Not To Scale	JAT	3-31-21	CAD	3-31-21	E:\RW\Location Maps\AGREEMENTS\RLA-2020-09.dwg

BROWARD COUNTY HIGHWAY CONSTRUCTION & ENGINEERING DIVISION