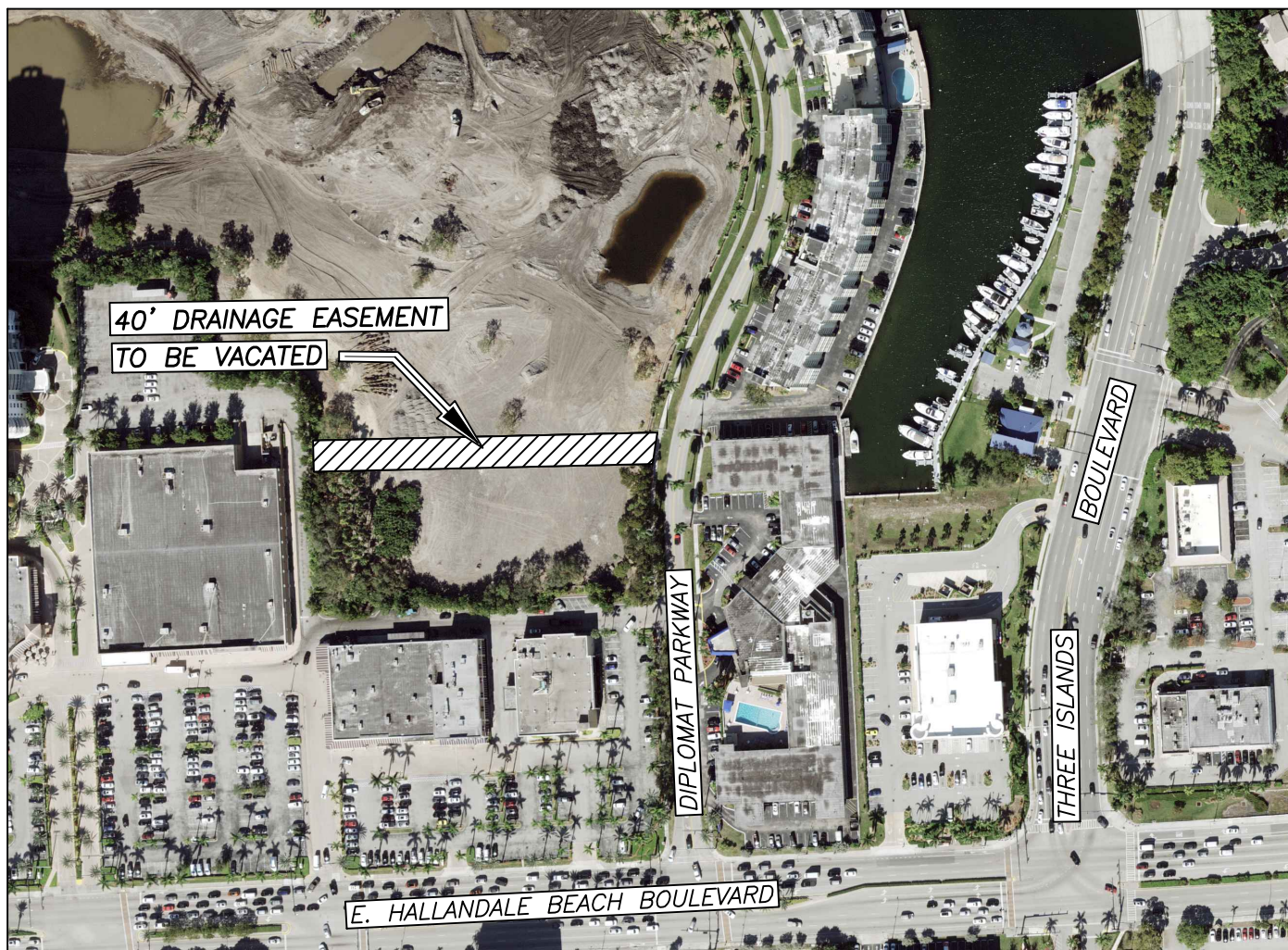


LOCATION MAP

PROJECT: 2019-V-06
PETITIONER: MALTESE DIPLOMAT OWNER LLC
MUNICIPALITY: CITY OF HALLANDALE BEACH
COMMISSION DISTRICT: 6

SECTION 26, TOWNSHIP 51 SOUTH, RANGE 42 EAST



Scale: Not To Scale	Drawn by: J-T	Date: 6-10-19	Checked by: FJG	Date: 6-10-19
------------------------	------------------	------------------	--------------------	------------------

File Location:
E:\RW\Location Maps\Vacations\2019-V-06.dwg