

**Prepared By and
After Recording Return to:**

Seth Sheitelman
Florida Power & Light Company
700 Universe Boulevard
Juno Beach, Florida 33408

Parcel ID: 504223160010; 504225050010; 54226080010; 504223000730

NOTE TO RECORDER: THIS CORRECTIVE UNDERGROUND EASEMENT IS BEING RECORDED FOR THE PURPOSE OF CORRECTING THE LEGAL DESCRIPTION CONTAINED IN THE ORIGINAL UNDERGROUND EASEMENT RECORDED IN THE PUBLIC RECORDS OF BROWARD COUNTY, FLORIDA UNDER INSTRUMENT NO. 115126093 (“ORIGINAL EASEMENT”), AND ALL DOCUMENTARY STAMP TAXES HAVE BEEN PAID IN CONNECTION WITH THE RECORDING OF THE ORIGINAL EASEMENT. IN THIS REGARD, NO DOCUMENTARY STAMP TAXES ARE DUE HEREON.

CORRECTIVE UNDERGROUND EASEMENT

The undersigned, in consideration of the payment of \$1.00 and other good and valuable consideration, the adequacy and receipt of which is hereby acknowledged, grant and give to Florida Power & Light Company, its affiliates, licensees, agents, successors, and assigns (“FPL”), a non-exclusive easement forever for the construction, operation and maintenance of overhead and underground electric utility facilities (including wires, poles, guys, cables, conduits and appurtenant equipment) to be installed from time to time; with the right to reconstruct, improve, add to, enlarge, change the voltage as well as the size of, and remove such facilities or any of them within an easement described as follows:

SEE ATTACHED EXHIBIT A (“Easement Area”);

together with the right to permit any other person, firm, or corporation to attach wires to any facilities hereunder and lay cable and conduit within the Easement Area and to operate the same for communications purposes; the right of ingress and egress to the Easement Area at all times; the right to clear the land and keep it cleared of all trees, undergrowth and other obstructions within the Easement Area; the right to trim and cut and keep trimmed and cut all dead, weak, leaning or dangerous trees or limbs outside of the Easement Area, which might interfere with or fall upon the lines or systems of communications or power transmission or distribution; and further grants, to the fullest extent the undersigned has the power to grant, if at all, the rights hereinabove granted on the Easement Area heretofore described, over, along, under and across the roads, streets or highways adjoining or through said Easement Area.

This Corrective Easement amends, restates, renews and replaces the Original Easement in its entirety.

IN WITNESS WHEREOF, the undersigned has signed this instrument on this ____ day of _____, 2022.

ATTEST:

BROWARD COUNTY, through its Board
of County Commissioners

Broward County Administrator, as ex
officio Clerk of the Broward County Board
of County Commissioners

By: _____

Print Name _____, Mayor

_____ day of _____, 2022

STATE OF FLORIDA
COUNTY OF BROWARD

The foregoing instrument was acknowledged before me by means of physical presence
or online notarization, this ____ day of _____, 2022, by
_____, as Mayor, who is personally known to me or who has
produced _____ as identification.

[NOTARIAL SEAL]

Notary: _____

Print Name: _____

Notary Public, State of Florida

My commission expires: _____

Approved to as of form by
Andrew J. Meyers
Broward County Attorney
Governmental Center, Suite 423
115 South Andrews Avenue
Fort Lauderdale, Florida 33301
Telephone (954) 357-7600
Telecopier (954) 357-7641

By: _____

Christina A. Blythe (Date)

Assistant County Attorney

By: _____

Annika E. Ashton (Date)

Deputy County Attorney

"EXHIBIT A"
SKETCH & DESCRIPTION
FOR: FLORIDA POWER & LIGHT CO.

DESCRIPTION:

A PARCEL OF LAND BEING A PORTION OF PARCEL A, PORT EVERGLADES INDUSTRIAL PARK SECTION ONE, ACCORDING TO THE PLAT THEREOF, AS RECORDED IN PLAT BOOK 112, PAGE 43, A PORTION OF PARCEL A, PORT EVERGLADES INDUSTRIAL PARK SECTION THREE, ACCORDING TO THE PLAT THEREOF, AS RECORDED IN PLAT BOOK 148, PAGE 2, A PORTION OF PARCEL A, PORT EVERGLADES PLAT NO 11, ACCORDING TO THE PLAT THEREOF, AS RECORDED IN PLAT BOOK 144, PAGE 4, OF THE PUBLIC RECORDS OF BROWARD COUNTY, FLORIDA, AND A PORTION OF THE RIGHT-OF-WAY FOR MCINTOSH RD, SAID PARCEL OF LAND BEING DESCRIBED AS FOLLOWS;

COMMENCE AT THE SOUTH WEST CORNER OF SAID PARCEL A OF PORT EVERGLADES INDUSTRIAL PARK SECTION ONE; THENCE ON AN ASSUMED BEARING OF NORTH 88°07'55" EAST ALONG THE SOUTH LINE OF PARCEL A, A DISTANCE OF 491.69 FEET; THENCE NORTH 1°53'54" WEST, A DISTANCE OF 316.73 FEET TO THE POINT OF BEGINNING; THENCE NORTH 01°34'00" WEST, A DISTANCE OF 35.00 FEET; THENCE NORTH 88°06'06" EAST, A DISTANCE OF 128.63 FEET TO THE POINT OF CURVATURE OF A CIRCULAR CURVE TO THE RIGHT; THENCE SOUTHEASTERLY ALONG THE ARC OF SAID CIRCULAR CURVE HAVING A RADIUS OF 20.00 FEET, A CENTRAL ANGLE OF 90°00'00" AND AN ARC LENGTH OF 31.42 FEET; THENCE SOUTH 01°53'54" EAST, A DISTANCE OF 126.70 FEET TO THE POINT OF CURVATURE OF A CIRCULAR CURVE TO THE LEFT; THENCE SOUTHEASTERLY ALONG THE ARC OF SAID CIRCULAR CURVE HAVING A RADIUS OF 20.00 FEET, A CENTRAL ANGLE OF 90°09'00" AND AN ARC LENGTH OF 31.47 FEET; THENCE NORTH 87°57'06" EAST, A DISTANCE OF 415.34 FEET; THENCE NORTH 78°34'34" EAST, A DISTANCE OF 80.77 FEET; THENCE NORTH 87°56'22" EAST, A DISTANCE OF 54.94 FEET; THENCE SOUTH 02°40'31" EAST, A DISTANCE OF 171.77 FEET; THENCE NORTH 88°06'06" EAST, A DISTANCE OF 30.27 FEET; THENCE SOUTH 01°53'54" (CON'T)

NOTES:

1. THIS IS NOT A MAP OF BOUNDARY SURVEY, BUT IS A GRAPHIC DEPICTION OF THE DESCRIPTION SHOWN HEREON.
2. NO MONUMENTATION WAS SET DURING THE PREPARATION OF THIS INSTRUMENT.
3. THE UNDERSIGNED & DJS SURVEYORS, INC., MAKE NO REPRESENTATIONS OR GUARANTEES AS TO THE INFORMATION REFLECTED HEREON PERTAINING TO EASEMENTS, RIGHTS-OF-WAY, SETBACK LINES, AGREEMENTS AND OTHER MATTERS, AND FURTHER, THIS INSTRUMENT IS NOT INTENDED TO REFLECT OR SET FORTH SUCH MATTERS. SUCH INFORMATION SHOULD BE OBTAINED AND CONFIRMED BY OTHERS THROUGH APPROPRIATE TITLE VERIFICATION. LANDS SHOWN HEREON WERE NOT ABSTRACTED FOR RIGHTS-OF-WAY AND/OR EASEMENTS RECORD.
4. BEARINGS ARE BASED ON THE SOUTH LINE OF PARCEL A OF PORT EVERGLADES INDUSTRIAL PARK SECTION ONE HAVING AN ASSUMED BEARING OF NORTH 88°07'55" EAST.
5. THIS SKETCH AND DESCRIPTION IS NOT VALID UNLESS IT BEARS THE SIGNATURE AND SEAL OF THE CERTIFYING SURVEYOR. THE SEAL APPEARING ON THIS DOCUMENT WAS AUTHORIZED BY DONALD J. SULLIVAN ON 2/15/2021.

REVISIONS	DATE	BY	CHKD	F.B./PG.

DJS SURVEYORS, INC.
PROFESSIONAL SURVEYORS AND MAPPERS
20283 STATE ROAD 7, SUITE 200
BOCA RATON, FL 33498
PH. 561.883.0470, FX. 561.883.0480
CERTIFICATE OF AUTHORIZATION NO. LB 7870
www.djssurveyors.com

NOT VALID WITHOUT THE SIGNATURE AND STAMPED SEAL OF THE CERTIFYING SURVEYOR.

DONALD J. SULLIVAN STATE OF FLORIDA REGISTERED PROFESSIONAL SURVEYOR & MAPPER
FLORIDA REGISTRATION NO. 6422
DATED: 2/15/2021

JOB No: 21-154	
FB/PG: N/A	1/8
DRAWN BY: S.M.	
CKD. BY: D.J.S.	
SCALE: N/A	


"EXHIBIT A"
SKETCH & DESCRIPTION
FOR: FLORIDA POWER & LIGHT CO.

(CON'T)

EAST, A DISTANCE OF 15.00 FEET; THENCE SOUTH 88°06'06" WEST, A DISTANCE OF 35.43 FEET; THENCE SOUTH 02°40'31" EAST, A DISTANCE OF 13.45 FEET TO A POINT ON THE SOUTH LINE OF PARCEL A OF PORT EVERGLADES INDUSTRIAL PARK SECTION 1; THENCE SOUTH 02°26'34" EAST, DEPARTING SAID SOUTH LINE, A DISTANCE OF 207.93 FEET; THENCE SOUTH 02°33'48" WEST, A DISTANCE OF 78.85 FEET; THENCE SOUTH 02°23'04" EAST, A DISTANCE OF 305.66 FEET; THENCE SOUTH 20°58'40" WEST, A DISTANCE OF 34.58 FEET; THENCE SOUTH 02°23'04" EAST, A DISTANCE OF 30.78 FEET; THENCE SOUTH 40°18'11" EAST, A DISTANCE OF 22.32 FEET; THENCE SOUTH 02°23'04" EAST, A DISTANCE OF 141.30 FEET; THENCE SOUTH 14°29'46" WEST, A DISTANCE OF 54.28 FEET; THENCE SOUTH 02°17'20" EAST, A DISTANCE OF 250.59 FEET; THENCE SOUTH 13°25'58" EAST, A DISTANCE OF 48.62 FEET; THENCE SOUTH 00°47'42" EAST, A DISTANCE OF 62.87 FEET; THENCE NORTH 77°00'22" EAST, A DISTANCE OF 2.33 FEET; THENCE SOUTH 12°59'38" EAST, A DISTANCE OF 63.58 FEET; THENCE SOUTH 01°33'13" EAST, A DISTANCE OF 563.84 FEET; THENCE SOUTH 03°59'16" EAST, A DISTANCE OF 62.47 FEET; THENCE NORTH 88°41'21" EAST, A DISTANCE OF 52.79 FEET; THENCE SOUTH 03°45'46" EAST, A DISTANCE OF 250.27 FEET; THENCE SOUTH 89°35'15" EAST, A DISTANCE OF 288.21 FEET; THENCE NORTH 89°17'45" EAST, A DISTANCE OF 212.10 FEET; THENCE NORTH 89°57'37" EAST, A DISTANCE OF 315.25 FEET; THENCE NORTH 38°40'10" EAST, A DISTANCE OF 23.15 FEET; THENCE NORTH 89°11'20" EAST, A DISTANCE OF 313.17 FEET; THENCE SOUTH 87°47'24" EAST, A DISTANCE OF 238.82 FEET; THENCE NORTH 88°43'52" EAST, A DISTANCE OF 399.10 FEET; THENCE NORTH 66°29'06" EAST, A DISTANCE OF 51.90 FEET; THENCE NORTH 89°04'32" EAST, A DISTANCE OF 659.00 FEET TO THE POINT OF CURVATURE OF A CIRCULAR CURVE TO THE RIGHT; THENCE EASTERLY AND SOUTHERLY ALONG THE ARC OF SAID CIRCULAR CURVE HAVING A RADIUS OF 20.00 FEET, A CENTRAL ANGLE OF 45°32'08" AND AN ARC LENGTH OF 15.89 FEET; THENCE SOUTH 45°23'20" EAST, A DISTANCE OF 217.41 FEET; THENCE SOUTH 00°43'19" WEST, A DISTANCE OF 429.94 FEET; THENCE SOUTH 02°50'19" WEST, A DISTANCE OF 329.77 FEET; THENCE NORTH 88°30'12" WEST, A DISTANCE OF 346.46 FEET TO THE POINT OF CURVATURE OF A CIRCULAR CURVE TO THE LEFT; THENCE SOUTHWESTERLY ALONG THE ARC OF SAID CIRCULAR CURVE HAVING A RADIUS OF 5.00 FEET, A CENTRAL ANGLE OF 91°04'21" AND AN ARC LENGTH OF 7.95 FEET; THENCE SOUTH 00°25'27" WEST, A DISTANCE OF 59.76 FEET; THENCE NORTH 89°34'33" WEST, A DISTANCE OF 15.00 FEET; THENCE NORTH 00°25'27" EAST, A DISTANCE OF 80.14 FEET; THENCE SOUTH 88°30'12" EAST, A DISTANCE OF 352.18 FEET; THENCE NORTH 02°50'19" EAST, A DISTANCE OF 314.84 FEET; THENCE NORTH 00°43'19" EAST, A DISTANCE OF 423.27 FEET; THENCE NORTH 45°23'20" WEST, A DISTANCE OF 211.03 FEET TO THE POINT OF CURVATURE OF A CIRCULAR CURVE TO THE LEFT; THENCE WESTERLY ALONG THE ARC OF SAID CIRCULAR CURVE HAVING A RADIUS OF 5.00 FEET, A CENTRAL ANGLE OF 45°32'08" AND AN ARC LENGTH OF 3.97 FEET; THENCE SOUTH 89°04'32" WEST, A DISTANCE OF 656.00 FEET; THENCE SOUTH 66°29'06" WEST, A DISTANCE OF 51.86 FEET; THENCE

(CON'T)

REVISIONS	DATE	BY	CHKD	F.B./PG.



DJS SURVEYORS, INC.
 PROFESSIONAL SURVEYORS AND MAPPERS
 20283 STATE ROAD 7, SUITE 200
 BOCA RATON, FL 33498
 PH. 561.883.0470, FX. 561.883.0480
 CERTIFICATE OF AUTHORIZATION NO. LB 7870
www.djssurveyors.com

JOB No:	21-154
FB/PG:	N/A
DRAWN BY:	S.M.
CKD. BY:	D.J.S.
SCALE:	N/A

SHEET No:
2/8


"EXHIBIT A"
SKETCH & DESCRIPTION
FOR: FLORIDA POWER & LIGHT CO.

(CONT)

SOUTH 88°43'52" WEST, A DISTANCE OF 402.51 FEET; THENCE NORTH 87°47'24" WEST, A DISTANCE OF 238.88 FEET; THENCE SOUTH 89°11'20" WEST, A DISTANCE OF 305.70 FEET; THENCE SOUTH 38°40'10" WEST, A DISTANCE OF 23.27 FEET; THENCE SOUTH 89°57'37" WEST, A DISTANCE OF 322.36 FEET; THENCE SOUTH 89°17'45" WEST, A DISTANCE OF 212.16 FEET; THENCE NORTH 89°35'15" WEST, A DISTANCE OF 281.91 FEET; THENCE SOUTH 00°02'23" EAST, A DISTANCE OF 37.17 FEET TO THE POINT OF CURVATURE OF A CIRCULAR CURVE TO THE RIGHT; THENCE SOUTHWESTERLY ALONG THE ARC OF SAID CIRCULAR CURVE HAVING A RADIUS OF 20.00 FEET, A CENTRAL ANGLE OF 90°00'00" AND AN ARC LENGTH OF 31.42 FEET; THENCE SOUTH 89°57'37" WEST, A DISTANCE OF 19.65 FEET; THENCE NORTH 00°02'23" WEST, A DISTANCE OF 15.00 FEET; THENCE NORTH 89°57'37" EAST, A DISTANCE OF 19.65 FEET TO THE POINT OF CURVATURE OF A CIRCULAR CURVE TO THE LEFT; THENCE NORTHEASTERLY ALONG THE ARC OF SAID CIRCULAR CURVE HAVING A RADIUS OF 5.00 FEET, A CENTRAL ANGLE OF 90°00'00" AND AN ARC LENGTH OF 7.85 FEET; THENCE NORTH 00°02'23" WEST, A DISTANCE OF 37.29 FEET; THENCE NORTH 89°35'15" WEST, A DISTANCE OF 5.39 FEET; THENCE NORTH 03°45'46" WEST, A DISTANCE OF 249.84 FEET; THENCE SOUTH 88°41'21" WEST, A DISTANCE OF 57.74 FEET; THENCE NORTH 03°59'16" WEST, A DISTANCE OF 76.97 FEET; THENCE NORTH 01°33'13" WEST, A DISTANCE OF 562.26 FEET; THENCE NORTH 12°59'38" WEST, A DISTANCE OF 61.57 FEET; THENCE NORTH 77°00'22" EAST, A DISTANCE OF 2.33 FEET; THENCE NORTH 00°47'42" WEST, A DISTANCE OF 64.46 FEET; THENCE NORTH 13°25'58" WEST, A DISTANCE OF 48.42 FEET; THENCE NORTH 02°17'20" WEST, A DISTANCE OF 254.27 FEET; THENCE NORTH 14°29'46" EAST, A DISTANCE OF 54.27 FEET; THENCE NORTH 02°23'04" WEST, A DISTANCE OF 133.93 FEET; THENCE NORTH 40°18'11" WEST, A DISTANCE OF 22.32 FEET; THENCE NORTH 02°23'04" WEST, A DISTANCE OF 39.03 FEET; THENCE NORTH 20°58'40" EAST, A DISTANCE OF 34.58 FEET; THENCE NORTH 02°23'04" WEST, A DISTANCE OF 303.20 FEET; THENCE NORTH 02°33'48" EAST, A DISTANCE OF 78.85 FEET; THENCE NORTH 02°26'34" WEST, A DISTANCE OF 207.61 FEET TO A POINT ON THE NORTH LINE OF PARCEL A PORT EVERGLADES INDUSTRIAL PARK SECTION THREE; THENCE NORTH 02°40'31" WEST, DEPARTING SAID NORTH LINE, A DISTANCE OF 128.45 FEET; THENCE NORTH 47°03'38" WEST, A DISTANCE OF 54.24 FEET; THENCE SOUTH 87°57'06" WEST, A DISTANCE OF 517.09 FEET TO THE POINT OF CURVATURE OF A CIRCULAR CURVE TO THE RIGHT; THENCE NORTHWESTERLY ALONG THE ARC OF SAID CIRCULAR CURVE HAVING A RADIUS OF 20.00 FEET, A CENTRAL ANGLE OF 90°09'00" AND AN ARC LENGTH OF 31.47 FEET; THENCE NORTH 01°53'54" WEST, A DISTANCE OF 126.78 FEET TO THE POINT OF CURVATURE OF A CIRCULAR CURVE TO THE LEFT; THENCE NORTHWESTERLY ALONG THE ARC OF SAID CIRCULAR CURVE HAVING A RADIUS OF 5.00 FEET, A CENTRAL ANGLE OF 90°00'00" AND AN ARC LENGTH OF 7.85 FEET; THENCE SOUTH 88°06'06" WEST, A DISTANCE OF 118.83 FEET TO THE POINT OF BEGINNING.

SAID LANDS SITUATE LYING AND BEING IN BROWARD COUNTY, FLORIDA, CONTAINING 122,896.60 SQUARE FEET OR (2.8213 ACRES), MORE OR LESS.

REVISIONS	DATE	BY	CHKD	F.B./PG.

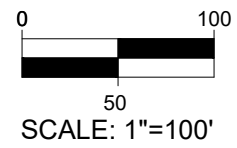
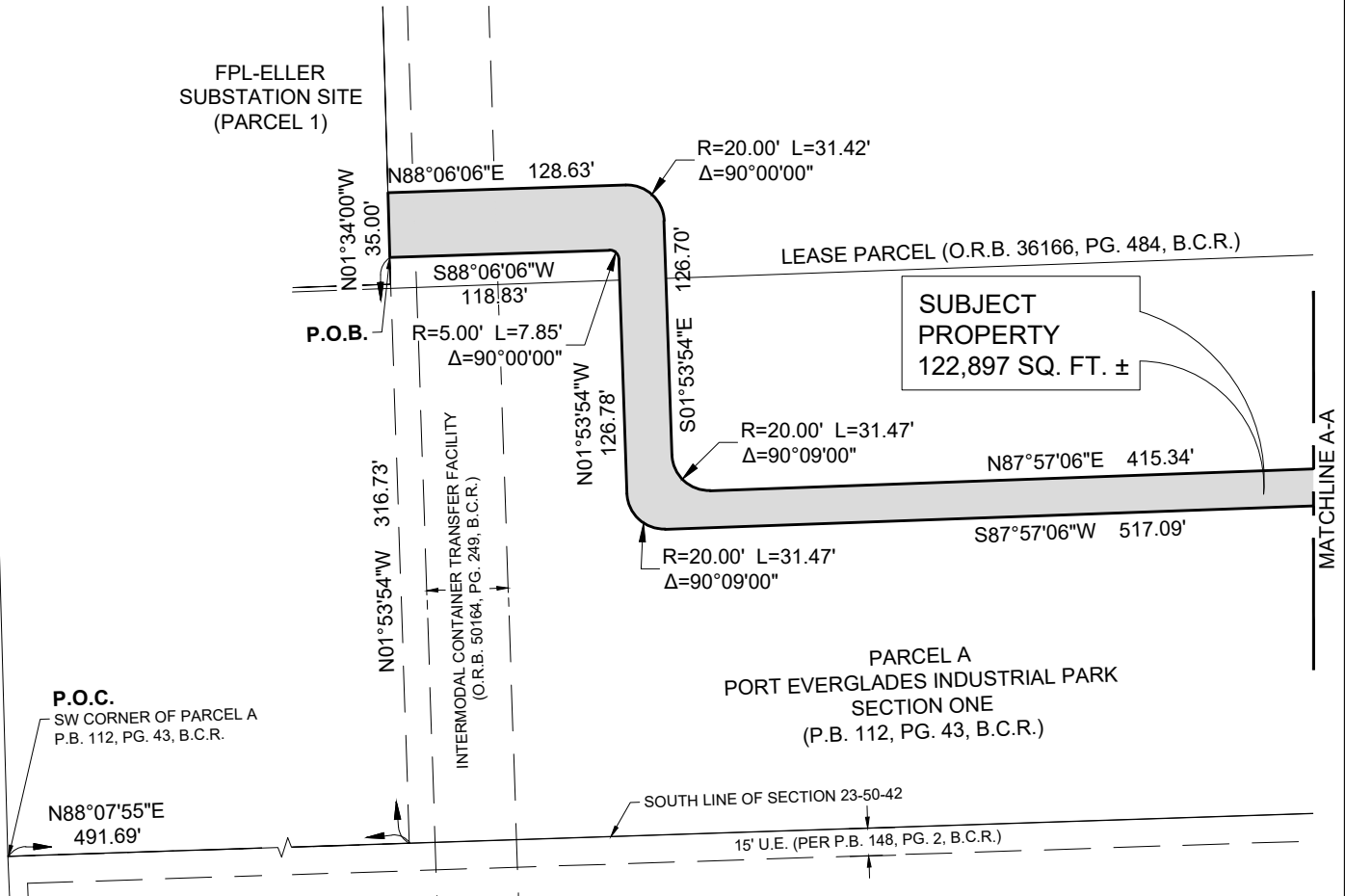


DJS SURVEYORS, INC.
PROFESSIONAL SURVEYORS AND MAPPERS
20283 STATE ROAD 7, SUITE 200
BOCA RATON, FL 33498
PH. 561.883.0470, FX. 561.883.0480
CERTIFICATE OF AUTHORIZATION NO. LB 7870
www.djssurveyors.com

JOB No:	21-154		
FB/PG:	N/A		
DRAWN BY:	S.M.		
CKD. BY:	D.J.S.		
SCALE:	N/A		
SHEET No:	3/8		



"EXHIBIT A" SKETCH & DESCRIPTION FOR: FLORIDA POWER & LIGHT CO.



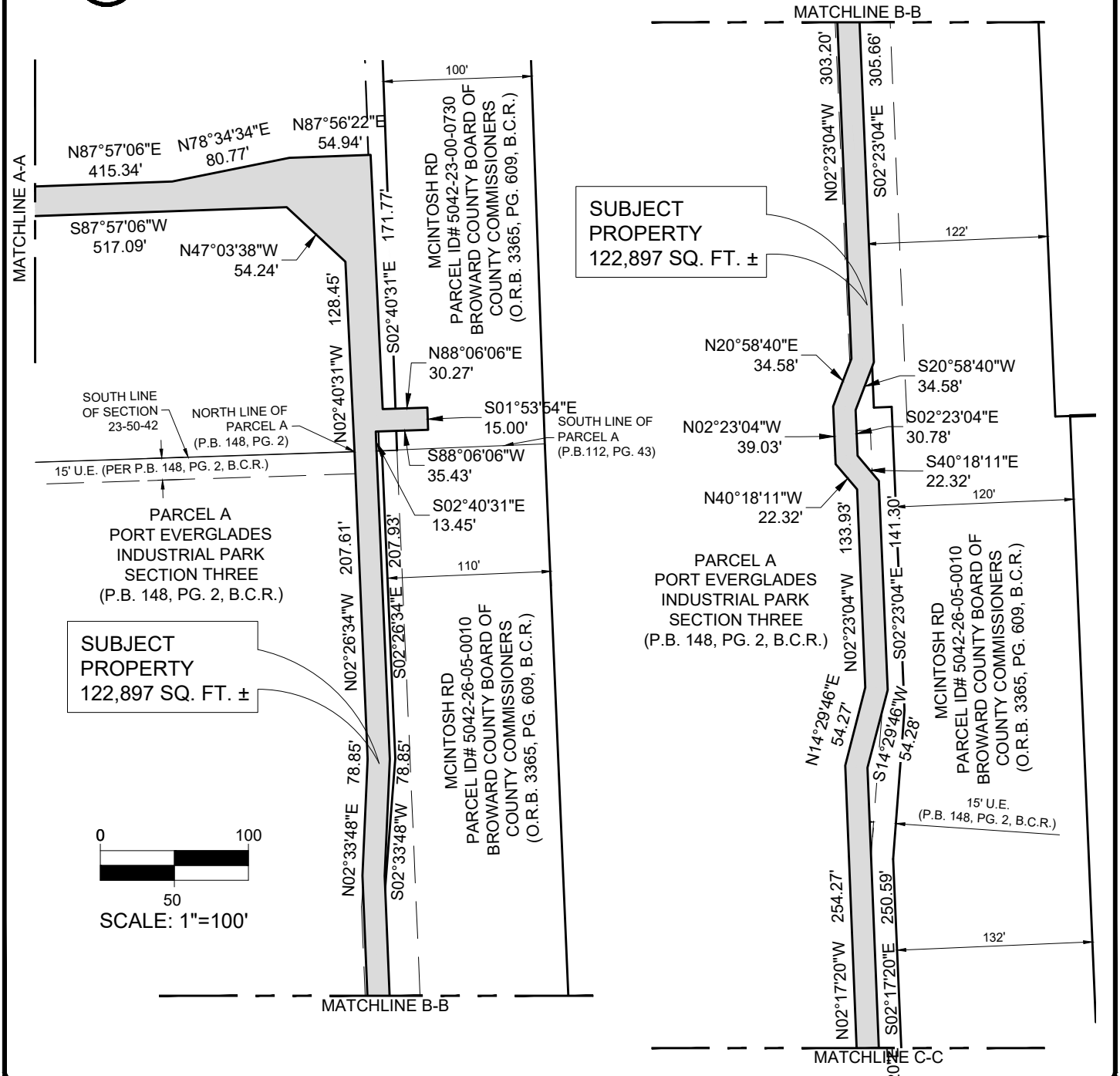
REVISIONS	DATE	BY	CHKD	F.B./PG.

DJS SURVEYORS, INC.
 PROFESSIONAL SURVEYORS AND MAPPERS
 20283 STATE ROAD 7, SUITE 200
 BOCA RATON, FL 33498
 PH. 561.883.0470, FX. 561.883.0480
 CERTIFICATE OF AUTHORIZATION NO. LB 7870
www.djssurveyors.com

JOB No:	21-154
FB/PG:	N/A
DRAWN BY:	S.M.
CKD. BY:	D.J.S.
SCALE:	1"=100'

SHEET No:
4/8

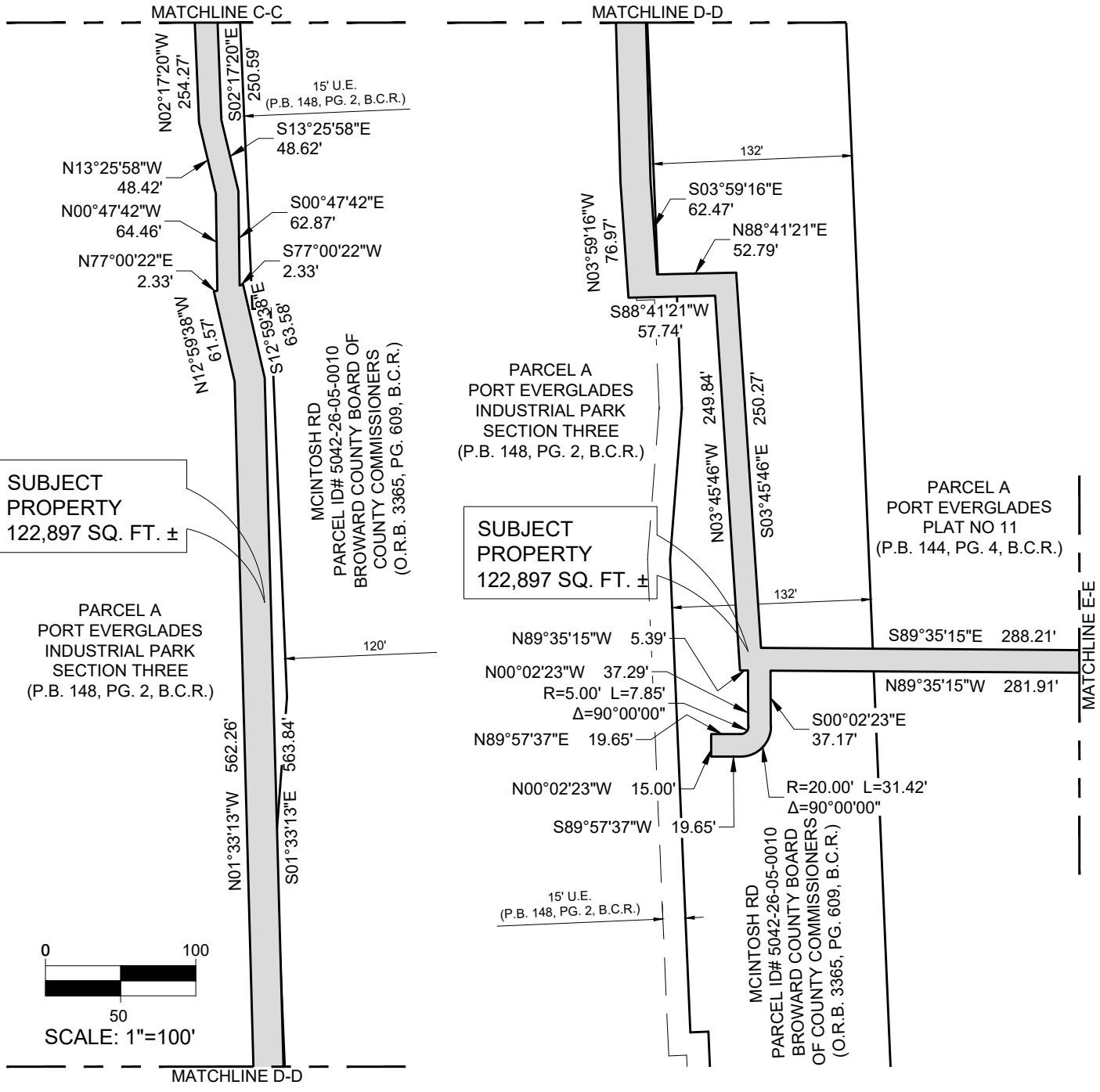
"EXHIBIT A" SKETCH & DESCRIPTION FOR: FLORIDA POWER & LIGHT CO.



DJS SURVEYORS, INC.
PROFESSIONAL SURVEYORS AND MAPPERS
20283 STATE ROAD 7, SUITE 200
BOCA RATON, FL 33498
PH. 561.883.0470, FX. 561.883.0480
CERTIFICATE OF AUTHORIZATION NO. LB 7870
www.djssurveyors.com

JOB No:	21-154			
FB/PG:	N/A			
DRAWN BY:	S.M.			
CKD. BY:	D.J.S.			
SCALE:	1"=100'			
SHEET No:	5/8			

"EXHIBIT A" SKETCH & DESCRIPTION FOR: FLORIDA POWER & LIGHT CO.



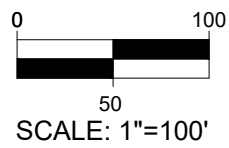
SUBJECT PROPERTY
122,897 SQ. FT. ±

SUBJECT PROPERTY
122,897 SQ. FT. ±

PARCEL A
PORT EVERGLADES
INDUSTRIAL PARK
SECTION THREE
(P.B. 148, PG. 2, B.C.R.)

PARCEL A
PORT EVERGLADES
INDUSTRIAL PARK
SECTION THREE
(P.B. 148, PG. 2, B.C.R.)

PARCEL A
PORT EVERGLADES
PLAT NO 11
(P.B. 144, PG. 4, B.C.R.)



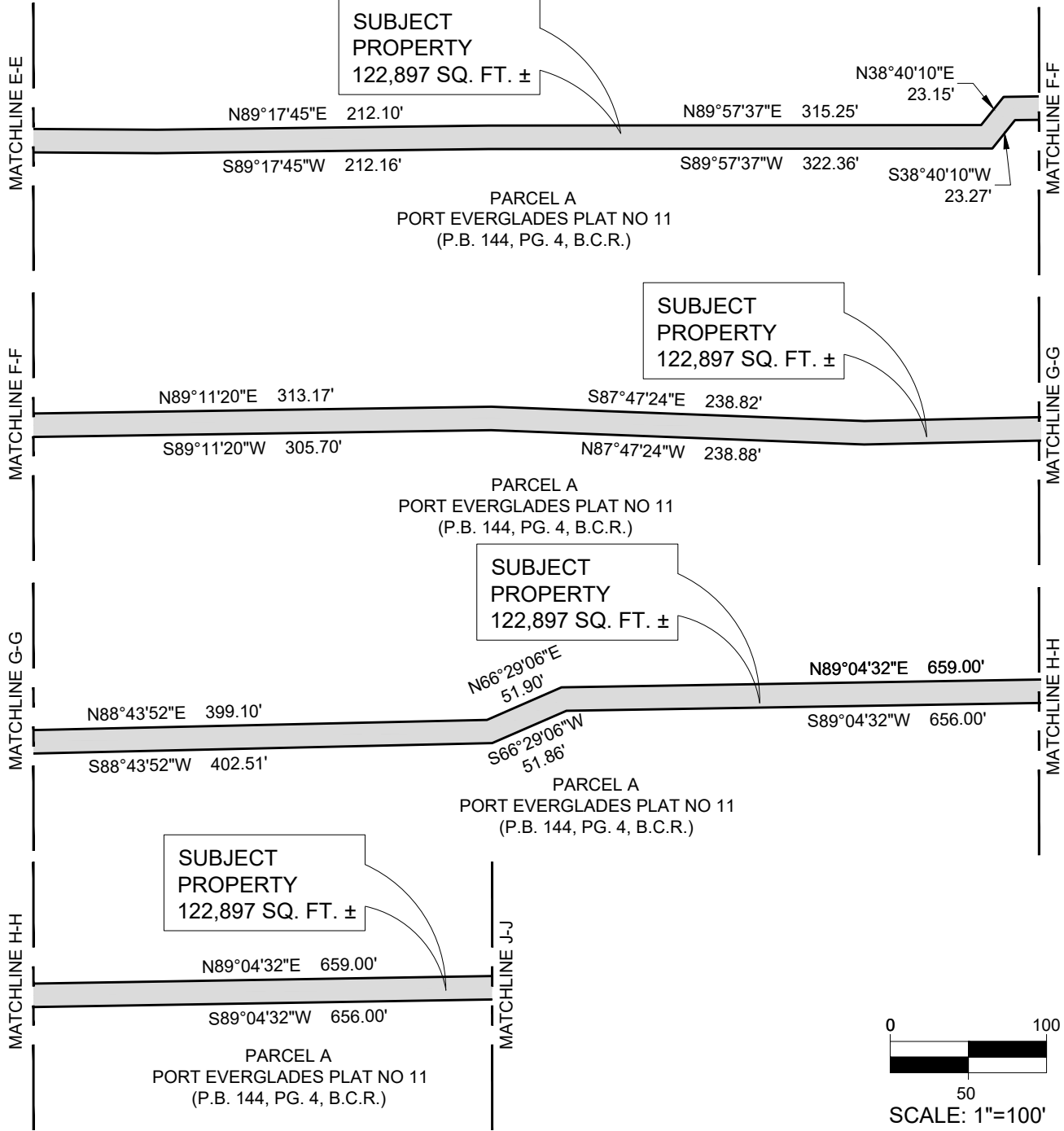
REVISIONS	DATE	BY	CHKD	F.B./PG.

DJS SURVEYORS, INC.
PROFESSIONAL SURVEYORS AND MAPPERS
20283 STATE ROAD 7, SUITE 200
BOCA RATON, FL 33498
PH. 561.883.0470, FX. 561.883.0480
CERTIFICATE OF AUTHORIZATION NO. LB 7870
www.djssurveyors.com

JOB No:	21-154
FB/PG:	N/A
DRAWN BY:	S.M.
CKD. BY:	D.J.S.
SCALE:	1"=100'

SHEET No:
6/8

"EXHIBIT A"
SKETCH & DESCRIPTION
FOR: FLORIDA POWER & LIGHT CO.



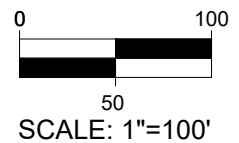
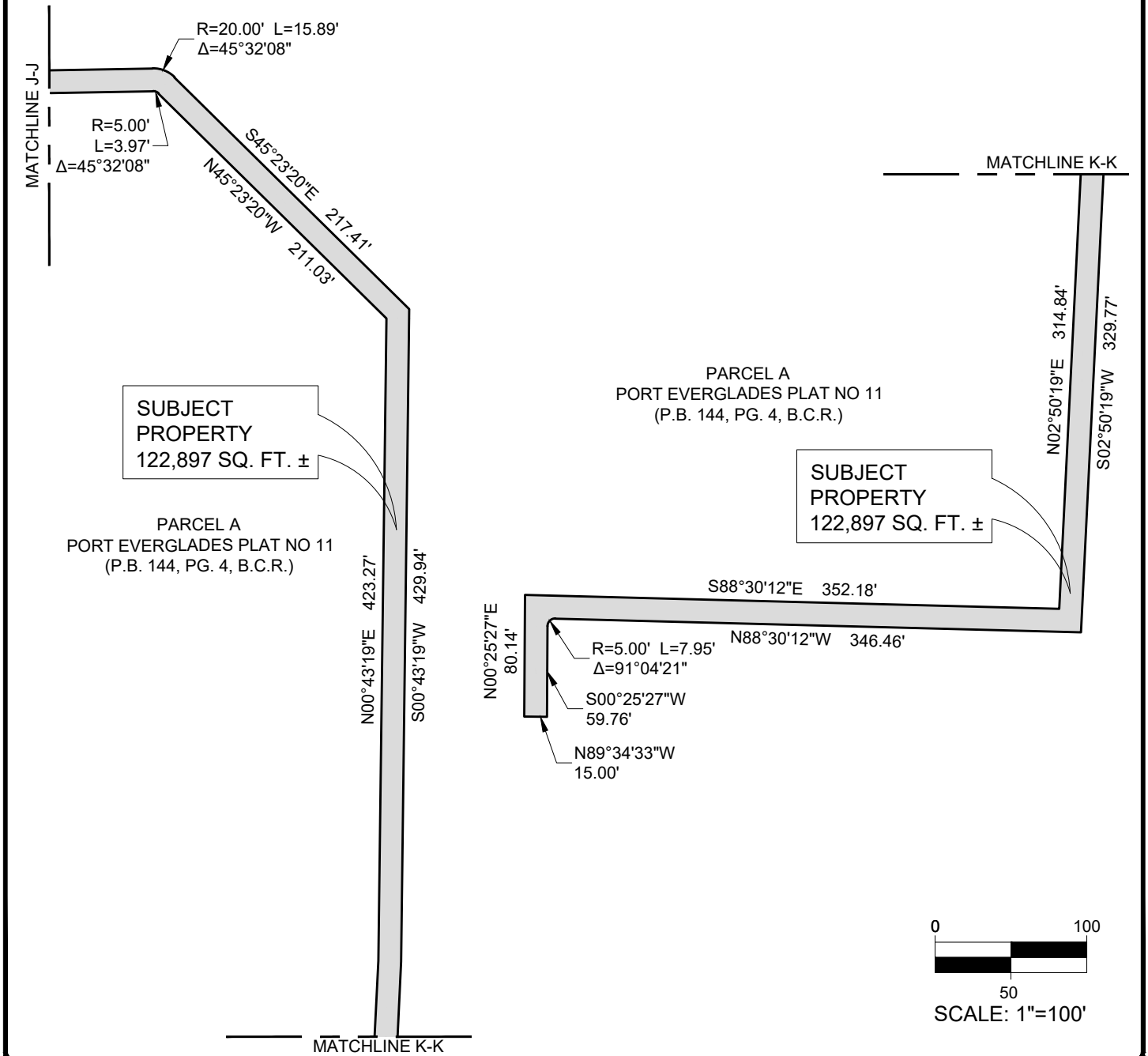
REVISIONS	DATE	BY	CHKD	F.B./PG.

DJS SURVEYORS, INC.
PROFESSIONAL SURVEYORS AND MAPPERS
20283 STATE ROAD 7, SUITE 200
BOCA RATON, FL 33498
PH. 561.883.0470, FX. 561.883.0480
CERTIFICATE OF AUTHORIZATION NO. LB 7870
www.djssurveyors.com


JOB No:	21-154
FB/PG:	N/A
DRAWN BY:	S.M.
CKD. BY:	D.J.S.
SCALE:	1"=100'

SHEET No:
7/8

"EXHIBIT A"
SKETCH & DESCRIPTION
FOR: FLORIDA POWER & LIGHT CO.



REVISIONS	DATE	BY	CHKD	F.B./PG.



DJS SURVEYORS, INC.
 PROFESSIONAL SURVEYORS AND MAPPERS
 20283 STATE ROAD 7, SUITE 200
 BOCA RATON, FL 33498
 PH. 561.883.0470, FX. 561.883.0480
 CERTIFICATE OF AUTHORIZATION NO. LB 7870
 www.djssurveyors.com

JOB No:	21-154
FB/PG:	N/A
DRAWN BY:	S.M.
CKD. BY:	D.J.S.
SCALE:	1"=100'

SHEET No:	8/8
-----------	-----