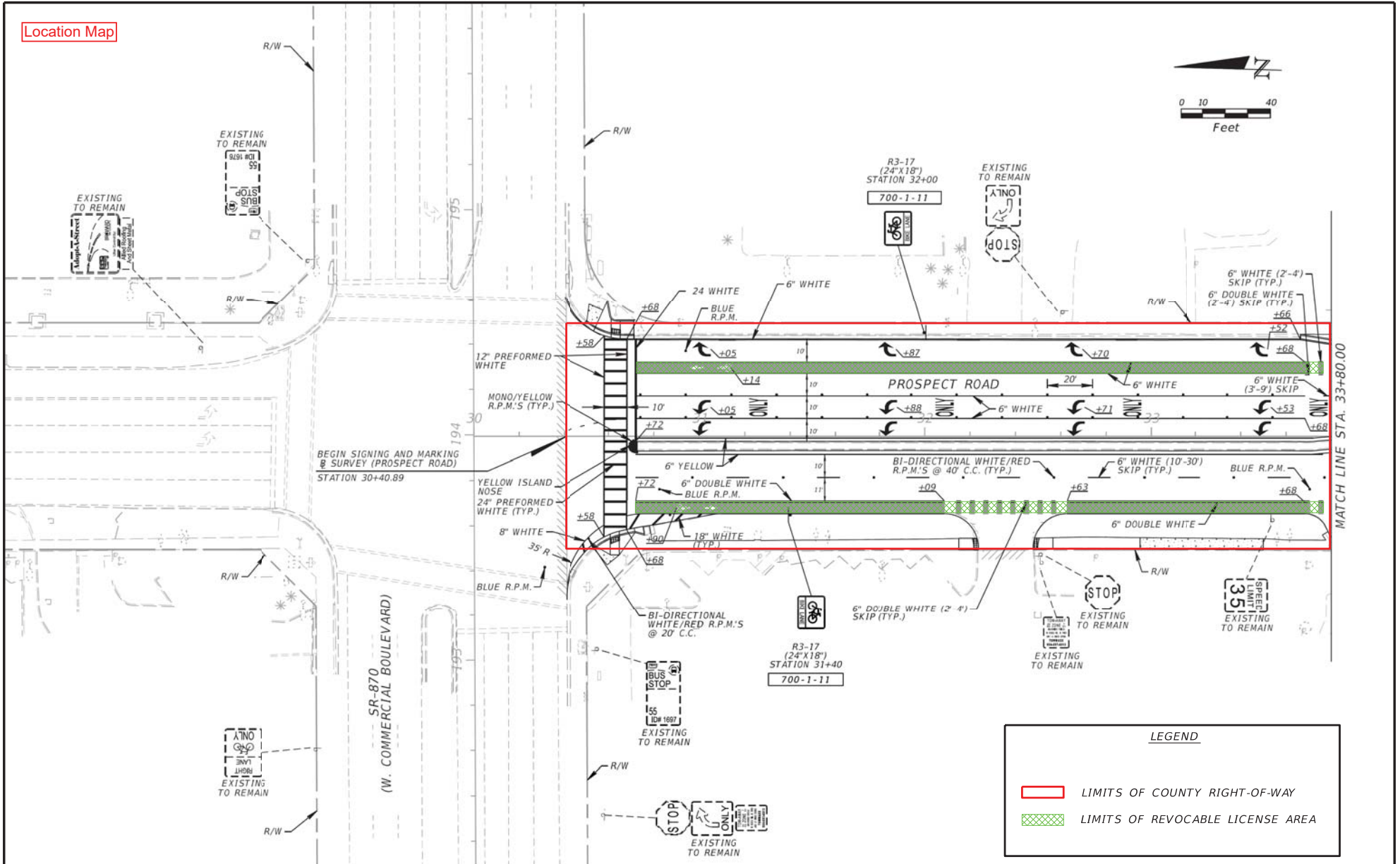


 Project Location

Prospect Road from Commercial Blvd to west of NW 15th Ave  
Precise Limits of Revocable License Area Shown on Following Pages



PUBLIC WORKS DEPARTMENT  
TRAFFIC ENGINEERING DIVISION  
2300 WEST COMMERCIAL BLVD  
FORT LAUDERDALE, FL 33309



PUBLIC WORKS DEPARTMENT  
TRAFFIC ENGINEERING DIVISION

COUNTY PROJECT NO.

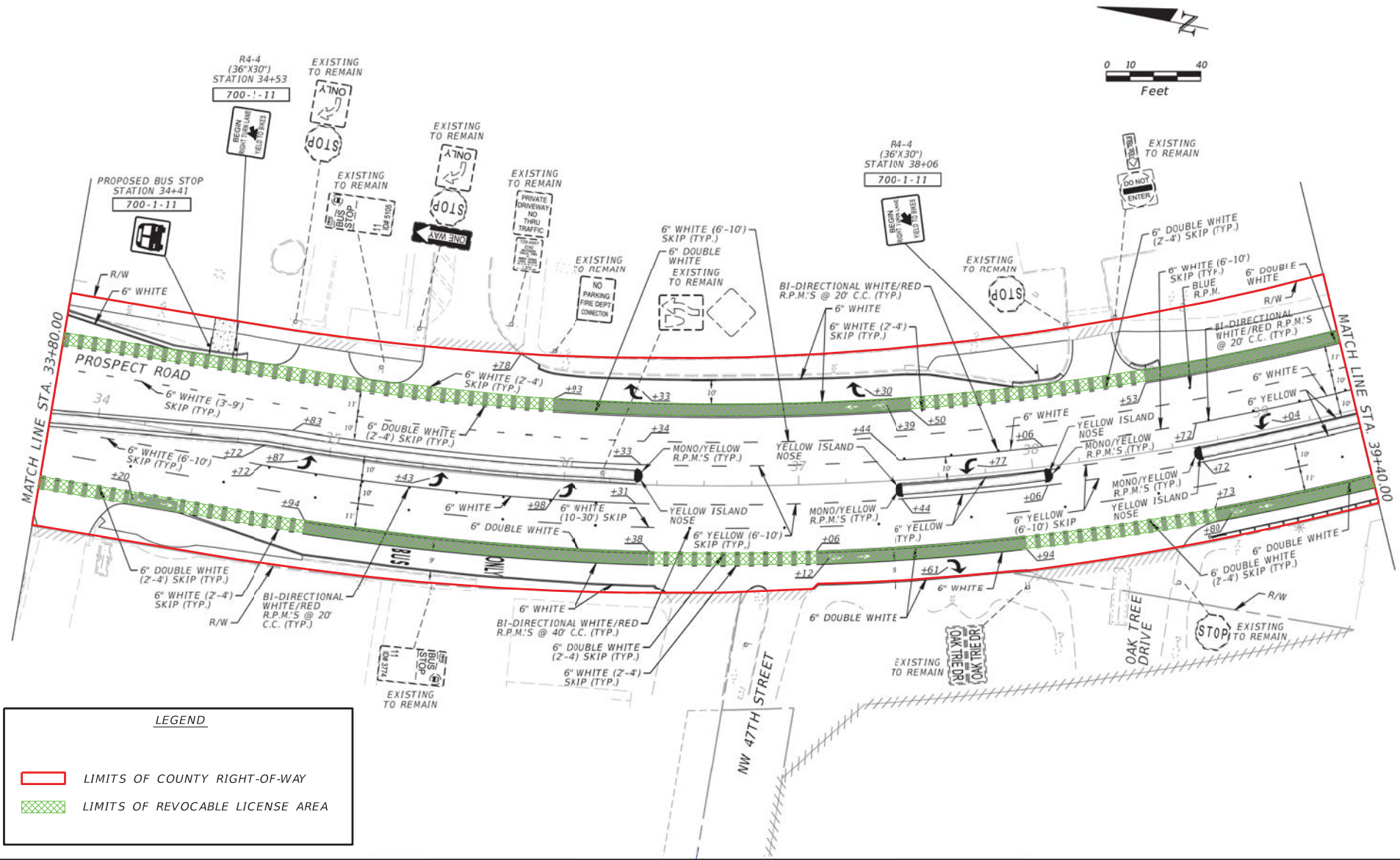
**SIGNING AND PAVEMENT  
MARKING PLAN**

SHEET NO.

S-1

SUSERS SDATES STINES SFILES

Location Map



**LEGEND**

- LIMITS OF COUNTY RIGHT-OF-WAY
- LIMITS OF REVOCABLE LICENSE AREA

REVISIONS	
DATE	DESCRIPTION

PUBLIC WORKS DEPARTMENT  
TRAFFIC ENGINEERING DIVISION  
2300 WEST COMMERCIAL BLVD  
FORT LAUDERDALE, FL 33309



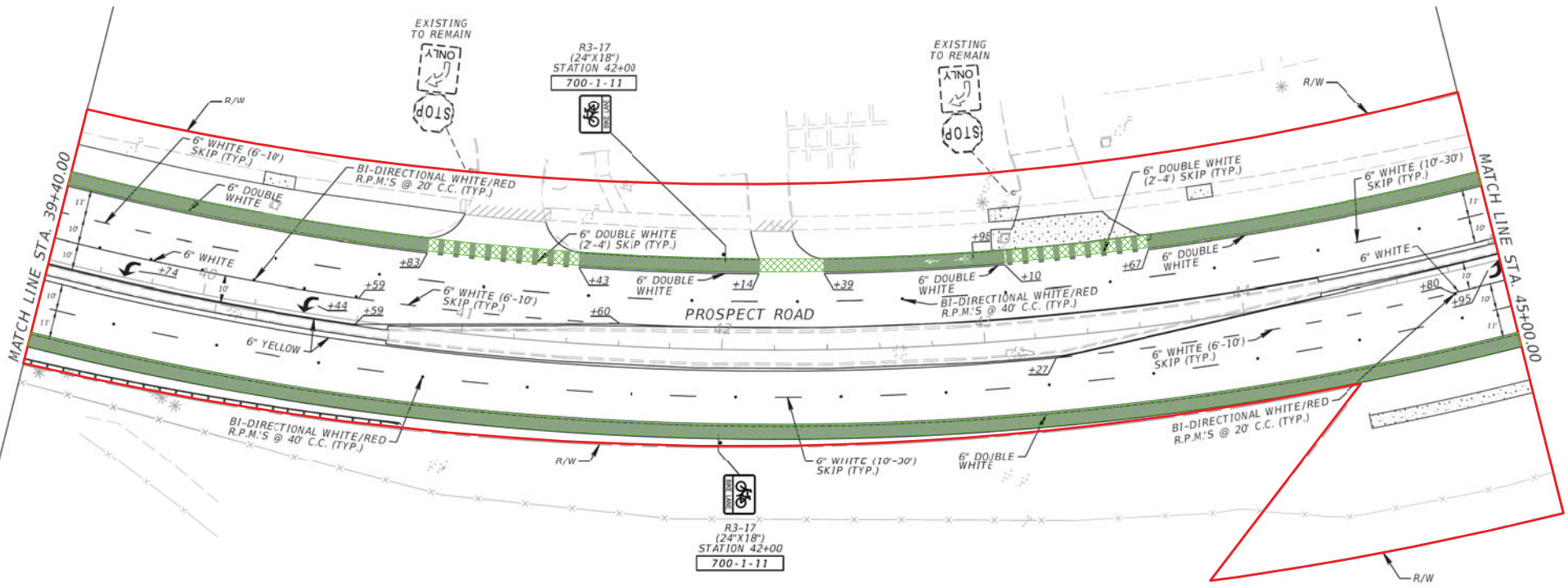
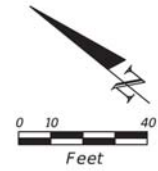
PUBLIC WORKS DEPARTMENT TRAFFIC ENGINEERING DIVISION	
	COUNTY PROJECT NO.

**SIGNING AND PAVEMENT  
MARKING PLAN**

SHEET NO.
S-2

USERS SDATES STIMES SFILES

Location Map



**LEGEND**

LIMITS OF COUNTY RIGHT-OF-WAY

LIMITS OF REVOCABLE LICENSE AREA

REVISIONS	
DATE	DESCRIPTION

PUBLIC WORKS DEPARTMENT  
TRAFFIC ENGINEERING DIVISION  
2300 WEST COMMERCIAL BLVD  
FORT LAUDERDALE, FL 33309



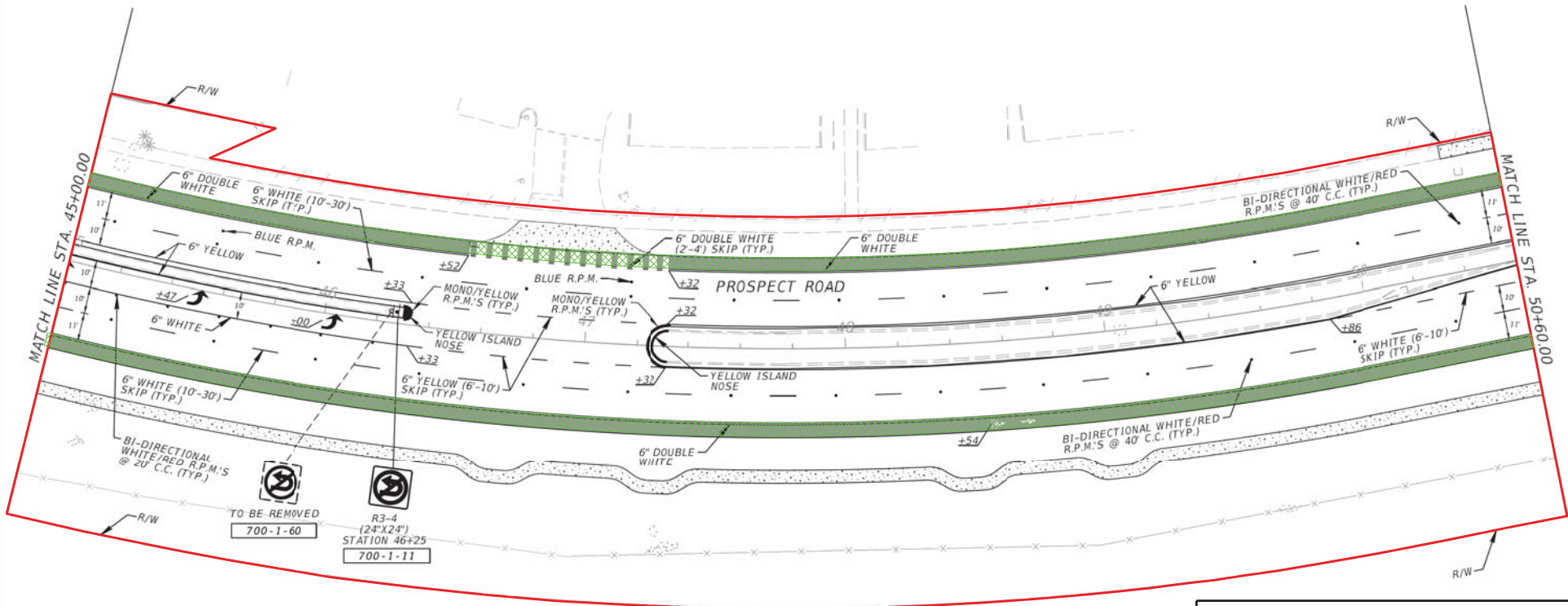
PUBLIC WORKS DEPARTMENT  
TRAFFIC ENGINEERING DIVISION  
COUNTY PROJECT NO.

**SIGNING AND PAVEMENT  
MARKING PLAN**

SHEET NO.  
S-3

SUSERS SDW/ES ST/MS SF/LES

Location Map



**LEGEND**

- LIMITS OF COUNTY RIGHT-OF-WAY
- LIMITS OF REVOCABLE LICENSE AREA

DATE	REVISIONS DESCRIPTION

PUBLIC WORKS DEPARTMENT  
TRAFFIC ENGINEERING DIVISION  
2300 WEST COMMERCIAL BLVD  
FORT LAUDERDALE, FL 33309



PUBLIC WORKS DEPARTMENT  
TRAFFIC ENGINEERING DIVISION

COUNTY PROJECT NO.

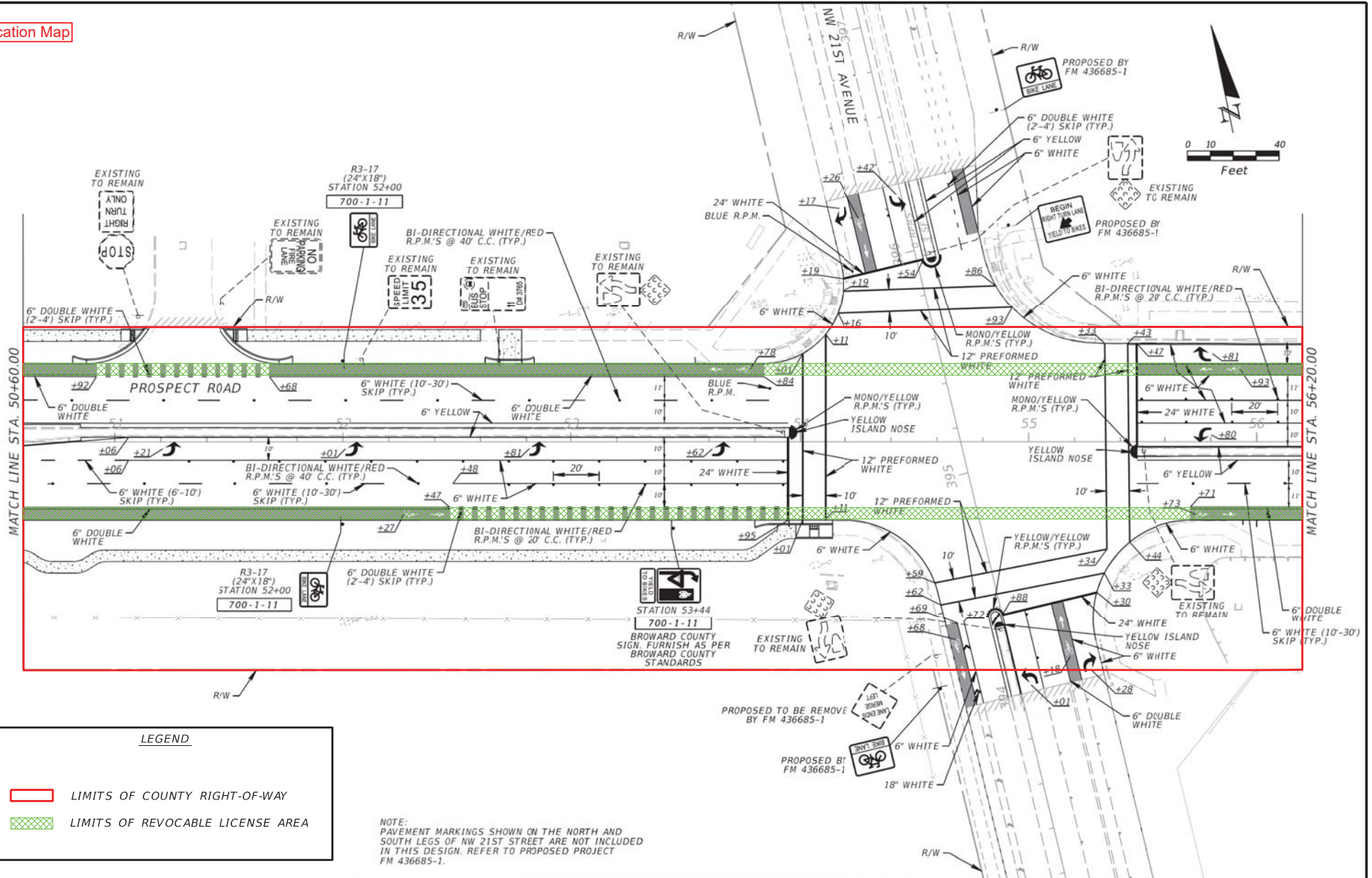
**SIGNING AND PAVEMENT  
MARKING PLAN**

SHEET NO.

S-4

SUSERS SDATES STIMES SFILES

Location Map



**LEGEND**

- LIMITS OF COUNTY RIGHT-OF-WAY
- LIMITS OF REVOCABLE LICENSE AREA

NOTE:  
PAVEMENT MARKINGS SHOWN ON THE NORTH AND SOUTH LEGS OF NW 21ST STREET ARE NOT INCLUDED IN THIS DESIGN. REFER TO PROPOSED PROJECT FM 436685-1.

REVISIONS	
DATE	DESCRIPTION

PUBLIC WORKS DEPARTMENT  
TRAFFIC ENGINEERING DIVISION  
2300 WEST COMMERCIAL BLVD  
FORT LAUDERDALE, FL 33309



PUBLIC WORKS DEPARTMENT  
TRAFFIC ENGINEERING DIVISION

COUNTY PROJECT NO.

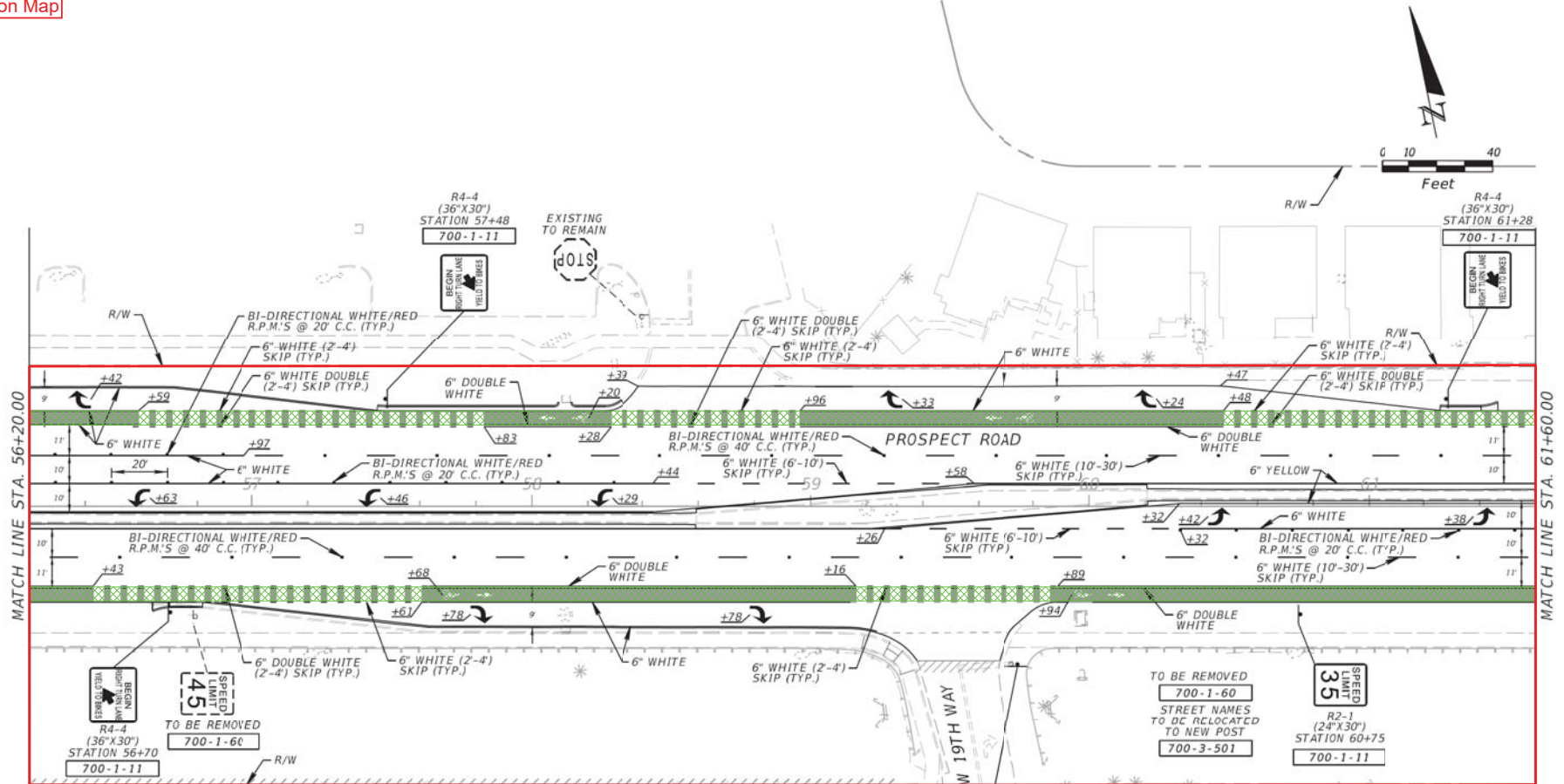
**SIGNING AND PAVEMENT  
MARKING PLAN**

SHEET NO.

S-5

SUSERS      SQUARES      STIMES      SFILES

Location Map



**LEGEND**

- LIMITS OF COUNTY RIGHT-OF-WAY
- LIMITS OF REVOCABLE LICENSE AREA

REVISIONS	
DATE	DESCRIPTION

PUBLIC WORKS DEPARTMENT  
TRAFFIC ENGINEERING DIVISION  
2300 WEST COMMERCIAL BLVD  
FORT LAUDERDALE, FL 33309



PUBLIC WORKS DEPARTMENT  
TRAFFIC ENGINEERING DIVISION

COUNTY PROJECT NO.

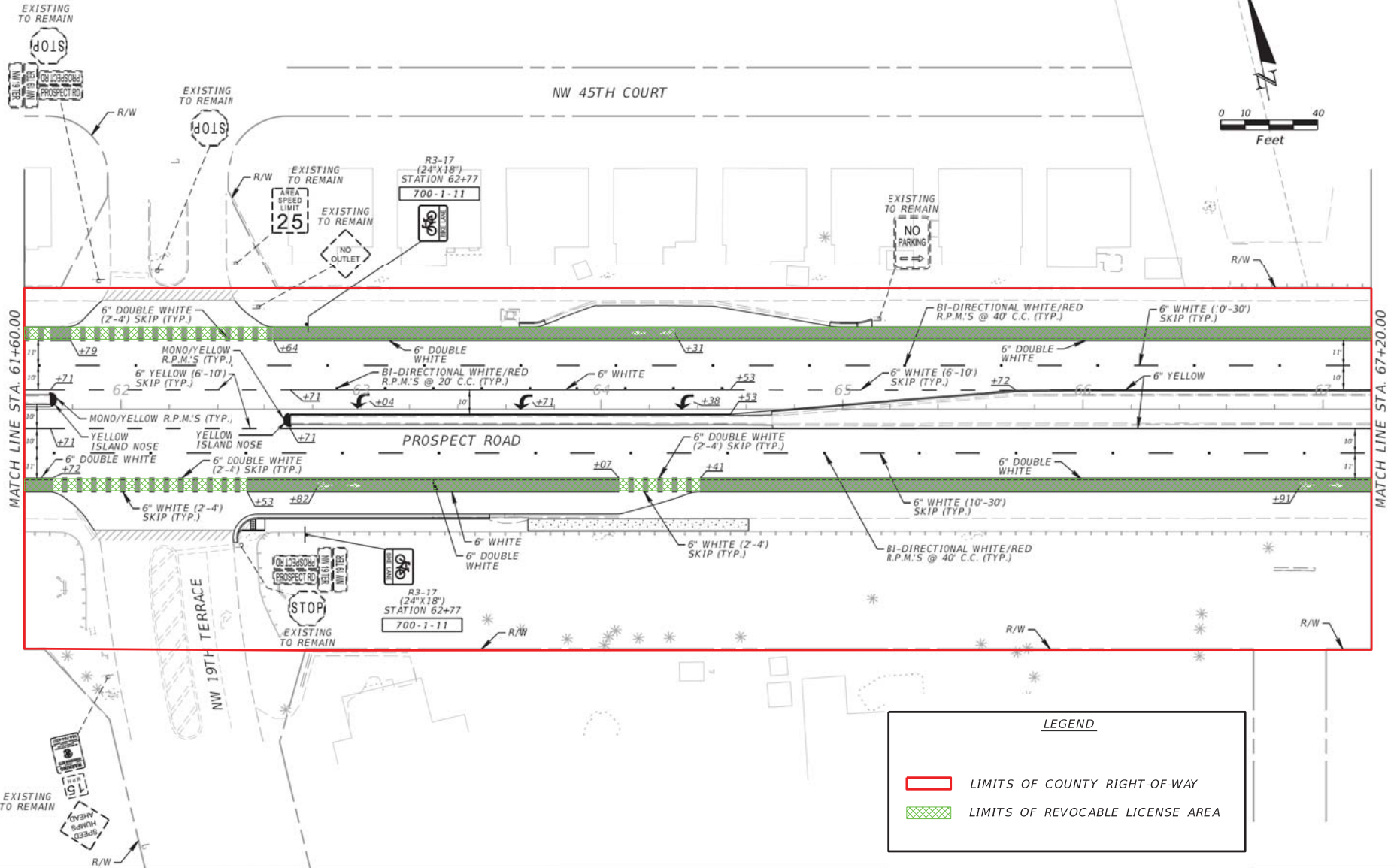
**SIGNING AND PAVEMENT  
MARKING PLAN**

SHEET NO.

S-6

SUSERS SDWSES STWSES SFILES

Location Map



DATE	REVISIONS DESCRIPTION

PUBLIC WORKS DEPARTMENT  
TRAFFIC ENGINEERING DIVISION  
2300 WEST COMMERCIAL BLVD  
FORT LAUDERDALE, FL 33309



PUBLIC WORKS DEPARTMENT  
TRAFFIC ENGINEERING DIVISION

COUNTY PROJECT NO.

**SIGNING AND PAVEMENT  
MARKING PLAN**

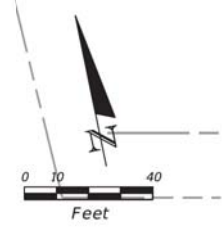
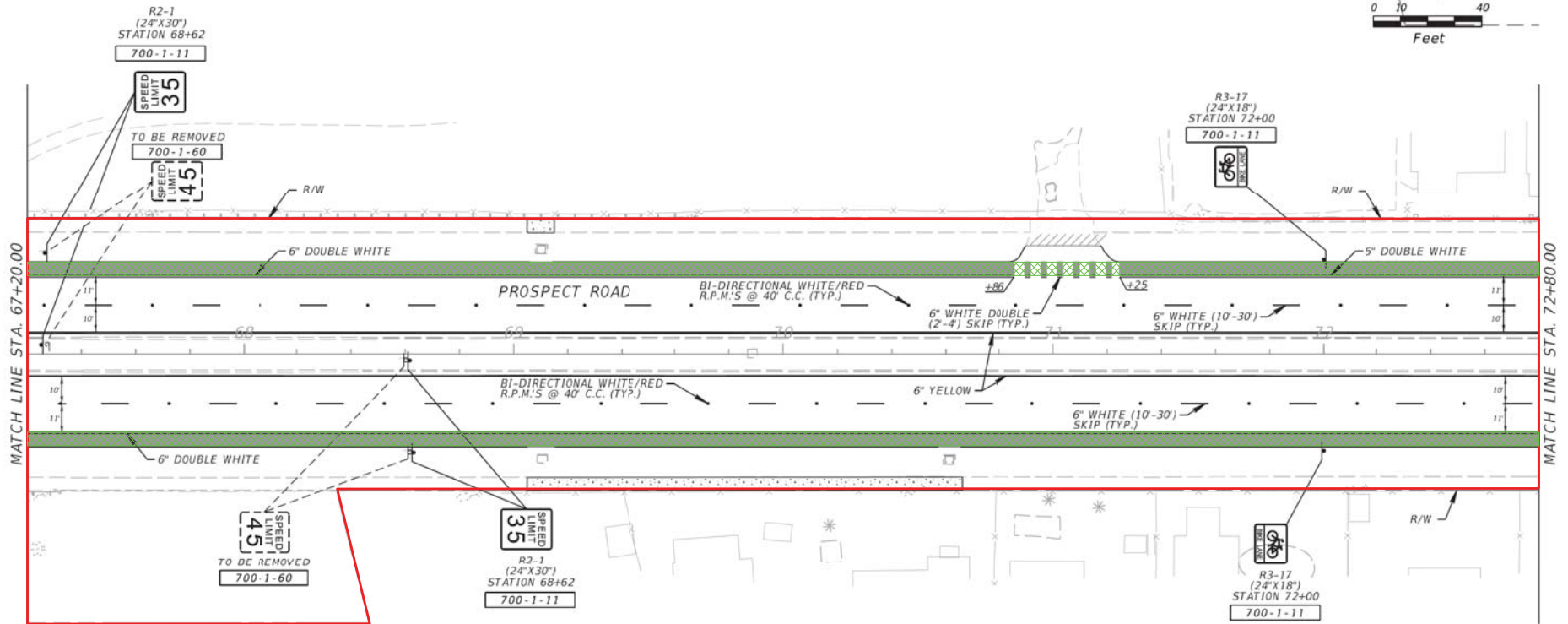
SHEET NO.

S-7

SUSERS SDW/ES ST/MS SF/LES



Location Map



**LEGEND**

- LIMITS OF COUNTY RIGHT-OF-WAY
- LIMITS OF REVOCABLE LICENSE AREA

REVISIONS	
DATE	DESCRIPTION

PUBLIC WORKS DEPARTMENT  
TRAFFIC ENGINEERING DIVISION  
2300 WEST COMMERCIAL BLVD  
FORT LAUDERDALE, FL 33309



PUBLIC WORKS DEPARTMENT  
TRAFFIC ENGINEERING DIVISION

COUNTY PROJECT NO.

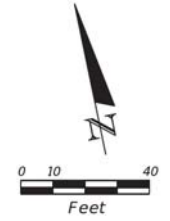
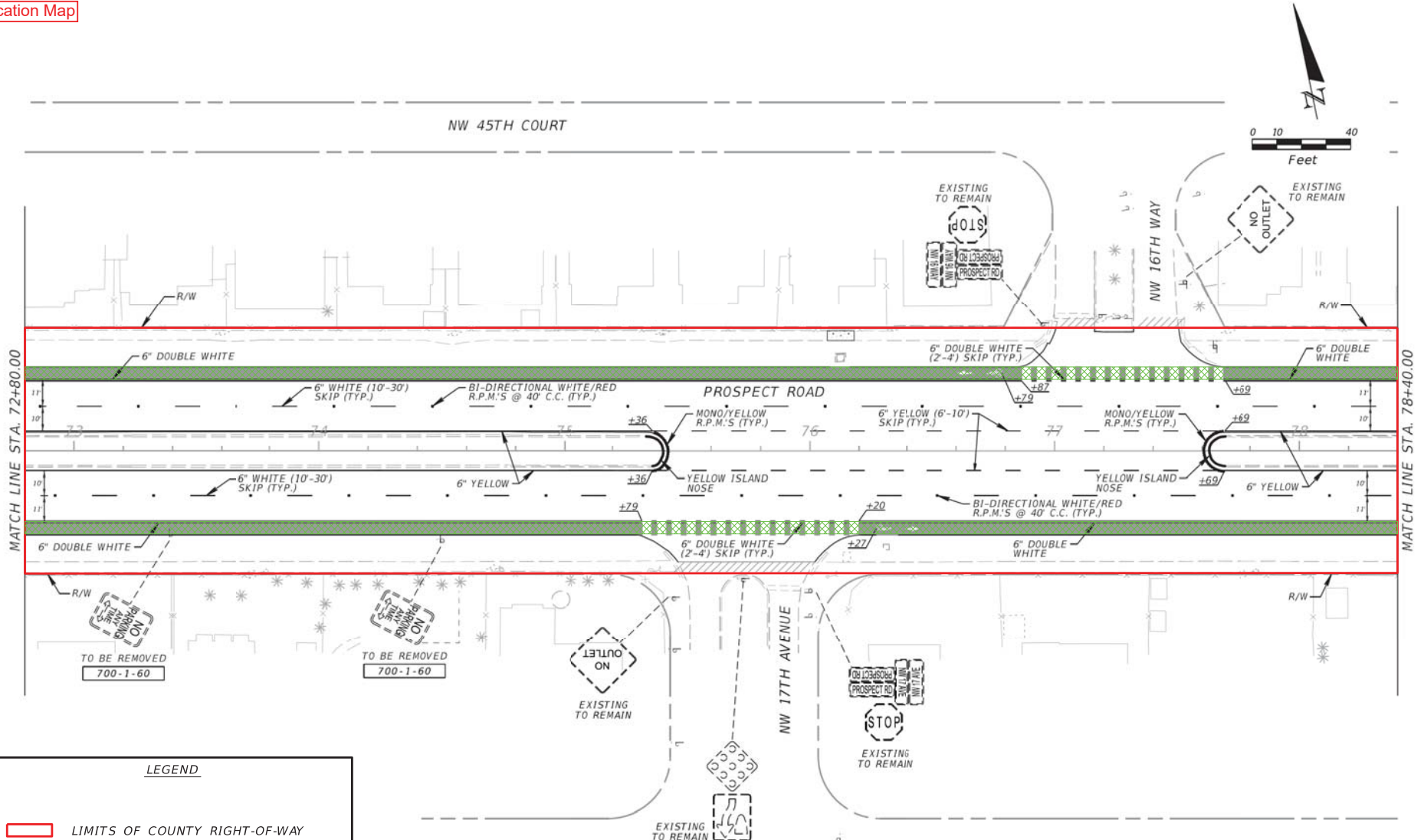
**SIGNING AND PAVEMENT  
MARKING PLAN**

SHEET NO.

S-8

SUSERS      SQUARES      STRIPES      SPFILES

Location Map



**LEGEND**

LIMITS OF COUNTY RIGHT-OF-WAY

LIMITS OF REVOCABLE LICENSE AREA

REVISIONS	
DATE	DESCRIPTION

PUBLIC WORKS DEPARTMENT  
TRAFFIC ENGINEERING DIVISION  
2300 WEST COMMERCIAL BLVD  
FORT LAUDERDALE, FL 33309



PUBLIC WORKS DEPARTMENT  
TRAFFIC ENGINEERING DIVISION

COUNTY PROJECT NO.

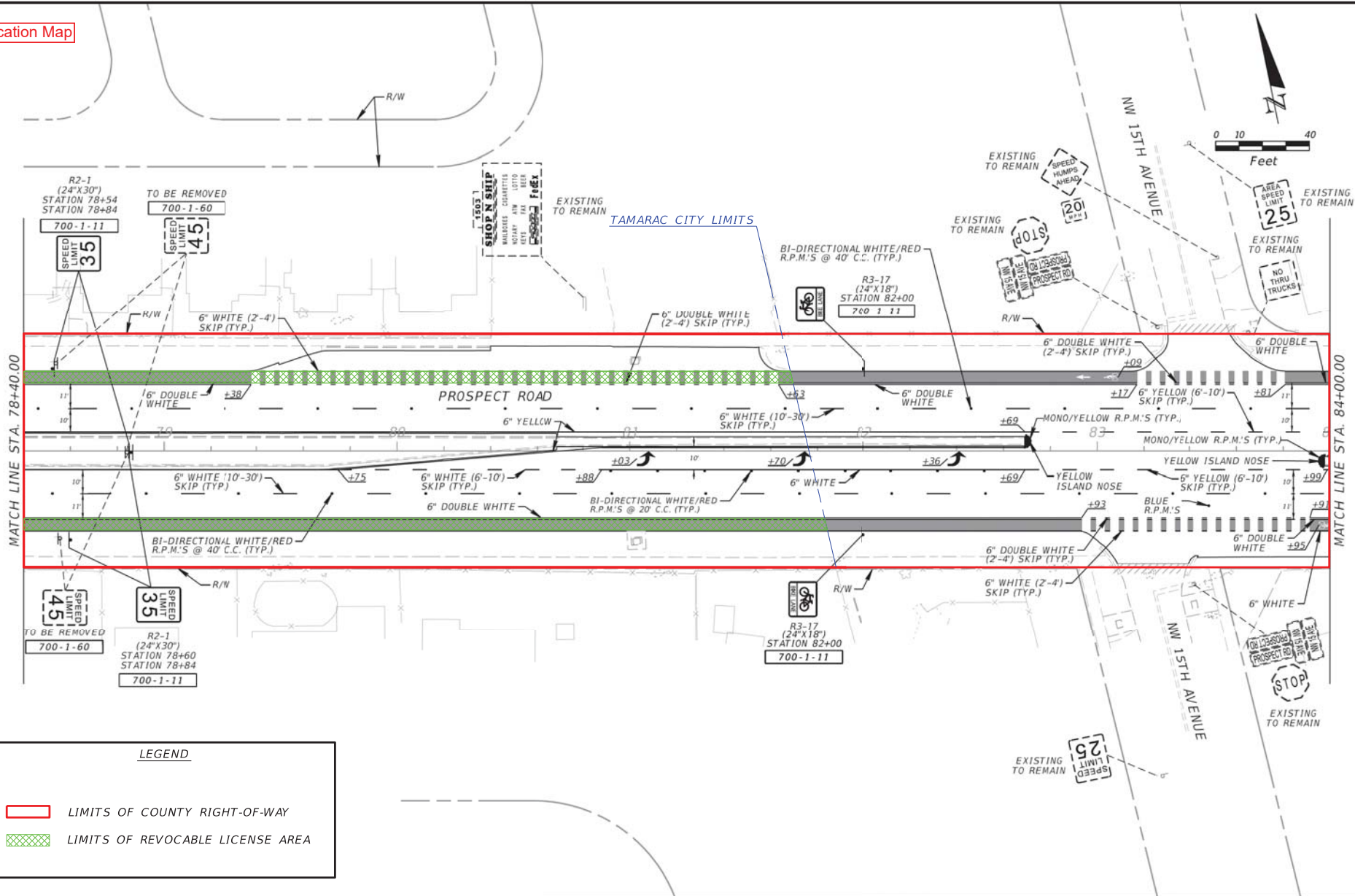
**SIGNING AND PAVEMENT  
MARKING PLAN**

SHEET NO.

S-9

SUSERS SDATES STINES SFILES

Location Map



**LEGEND**

LIMITS OF COUNTY RIGHT-OF-WAY

LIMITS OF REVOCABLE LICENSE AREA

REVISIONS	
DATE	DESCRIPTION

PUBLIC WORKS DEPARTMENT  
TRAFFIC ENGINEERING DIVISION  
2300 WEST COMMERCIAL BLVD  
FORT LAUDERDALE, FL 33309



PUBLIC WORKS DEPARTMENT  
TRAFFIC ENGINEERING DIVISION

COUNTY PROJECT NO.

**SIGNING AND PAVEMENT  
MARKING PLAN**

SHEET NO.

S-10

SUSERS SDW/ES ST/MS SF/LES