

# LOCATION MAP

SHEET 1 of 1

SECTION 26 & 27, TOWNSHIP 47 SOUTH, RANGE 41 EAST

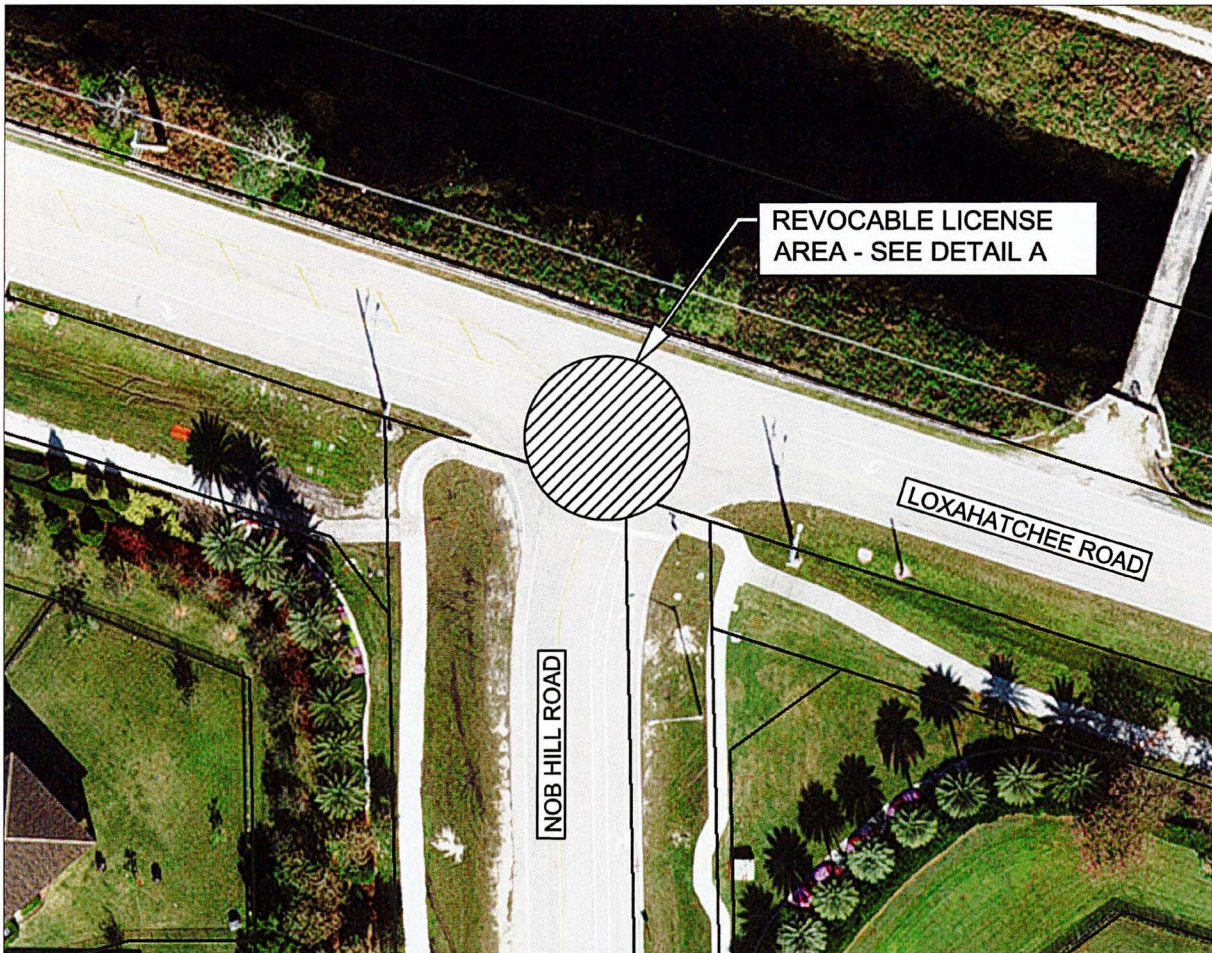
REVOCABLE LICENSE AGREEMENT BETWEEN  
BROWARD COUNTY AND CITY OF PARKLAND  
FOR THE INTERSECTION AT LOXAHATCHEE ROAD  
AND NOB HILL ROAD

BROWARD COUNTY REFERENCE NO. 240627002



LEGEND:

 = REVOCABLE LICENSE AREA



Scale:	Drawn By:	Date:	Checked By:	Date:	File Location:
Not To Scale	SB	08/12/2024	TG	08/12/2024	E:\RW\Location Map\Agreements\RLA-2024-11.dwg

# LOCATION MAP

DETAIL A

SECTION 26 & 27, TOWNSHIP 47 SOUTH, RANGE 41 EAST

REVOCABLE LICENSE AGREEMENT BETWEEN  
BROWARD COUNTY AND CITY OF PARKLAND  
FOR THE INTERSECTION AT LOXAHATCHEE ROAD  
AND NOB HILL ROAD

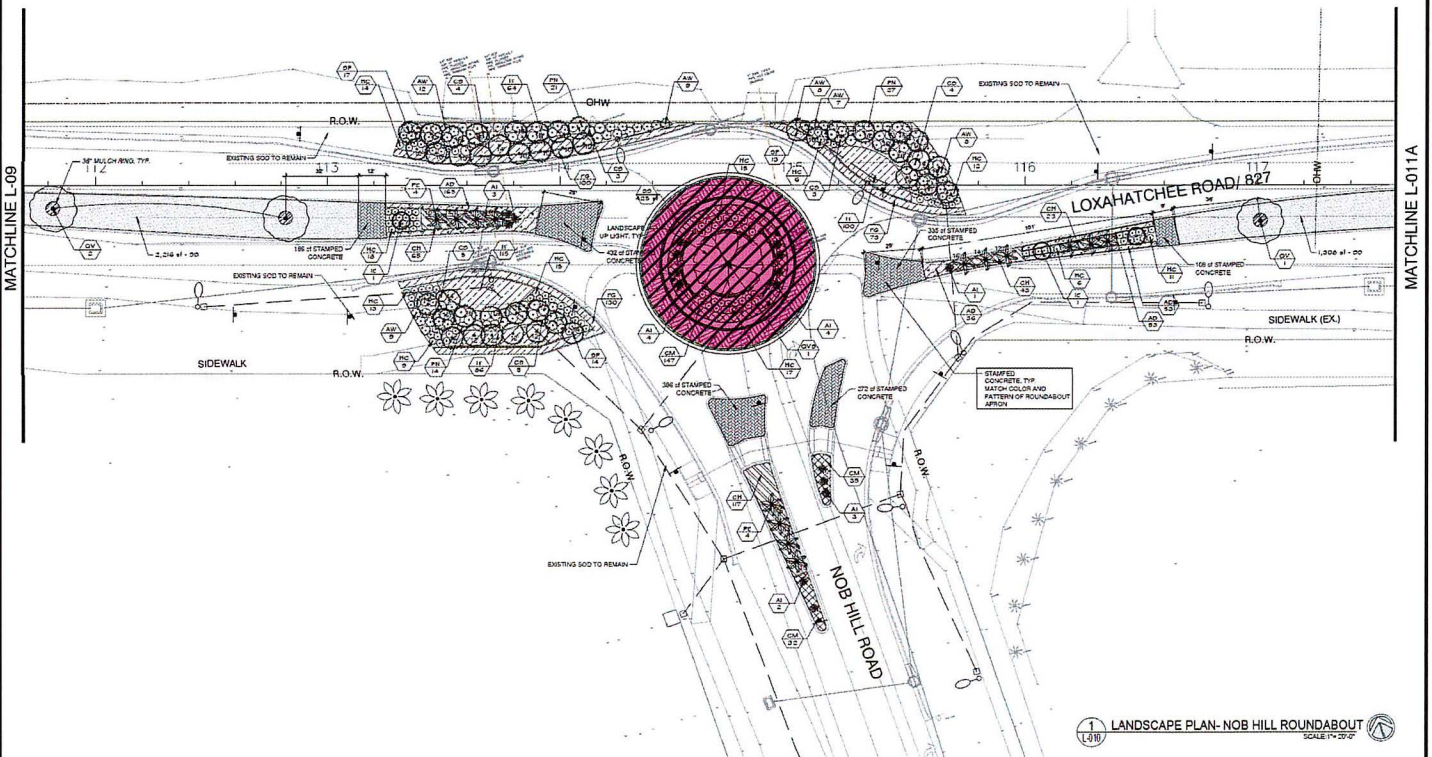


BROWARD COUNTY REFERENCE NO. 240627002

LEGEND:

 = REVOCABLE LICENSE AREA

DETAIL A



LANDSCAPE PLAN- NOB HILL ROUNDABOUT  
SCALE: 1"=20'

Scale:	Drawn By:	Date:	Checked By:	Date:	File Location:
Not To Scale	SB	07/26/2024	TG	07/26/2024	E:\RW\Location Map\Agreements\RLA-2024-11.dwg