



DATE: 6/26/23

TO: Robert Gleason, Director of Purchasing

THRU: Scott Brunner, P.E., Director, BCTED and Richard Tornese, P.E., Director, BCHCED

FROM: Manuel Fontan, P.E., Engineering Unit Supervisor, Highway Construction and Engineering Division

PROJECT TITLE: ATCS MAP Project IDs included are: A01, A02, A03,A05, A06, A103, A13, A14, A16, A21

REQUISITION NO.:

## SOLE SOURCE/SOLE BRAND REQUEST

### I. REQUEST: Provide a description of the features of the product/service or Scope of Work.

The Iteris Vantage Next with Vantage Vector Hybrid vehicle detection system is a unique all-in-one hybrid detection system that provides highly advanced cabinet equipment and video detection combined with radar detection. Broward County staff has determined that this system is the only system that satisfies the three critical features that are required for the project's SynchroGreen Adaptive Traffic Control System (ATCS) deployment: (1) high suitability, accuracy, and performance with ATCS systems, (2), lane by- lane detection and functionality to acquire various types of intelligent intersection data, including that required for ATCS systems, and (3), installation on existing traffic signal supports without construction of additional upstream or downstream infrastructure and communications.

### II. JUSTIFICATION: Please check all boxes that describe your reason(s) for determining that only one source or brand is reasonably available.

#### Only Sole Source/Uniqueness

Proprietary Item - this vendor/ source has the only rights to provide this service or commodity. A letter from the manufacturer or authorizing entity is included in this request.

Technology Improvements - updates or upgrades to an existing system, software, software as a service (SaaS), hardware purchases.

Engineering Direction - engineering drawing or specification identifies product; "no substitutes or equivalents will be acceptable."

Only qualified supplier - reliability and maintainability of the product or service would be degraded unless specified supplier is used; may void warranty. This request includes a copy of the current warranty information.

#### Other – the County requires this sole source, sole brand purchase for the following reasons:

The project's SynchroGreen ATCS requires lane-by-lane detection at both the stop bar of the intersection and at 250'-500' in advance to the stop bar. The Iteris Hybrid Vehicle Detector satisfies all the detection requirements of the ATCS, and no equally suitable alternative(s) were found for this project in a single device. The hybrid detection identified is intended to be a sole source/sole brand for the subject project and is not intended to limit other systems for consideration in future projects, subject to system requirements and specifications.

**Business Case (One/Most Reasonable Source or One/Most Reasonable Brand)**

Operational Compatibility - replacement parts from alternate suppliers are not interchangeable with original part and causes equipment incompatibility. Previous findings and/or documentation is included with this request.

Ease of Maintenance - maintenance or retooling prohibits competition. Section III, Comparative Market Research includes estimated costs associated with changing current source and/or brand.

Follow-On - potential for continued development or enhancement with same supplier and eliminates costs incurred by using different supplier. Section III, Comparative Market Research includes estimated costs for replacing current or existing system.

Complies with existing community and safety standards, and/or laws, rules, and regulations.

Exempted from the Procurement Code – per Section 21.5 of Broward County Administrative Code.

Other/or additional information – using this sole source, sole brand purchase benefits the County for the following reasons:

III. COMPARATIVE MARKET RESEARCH: Provide a detailed source or market analysis for justification of sole source/brand or most reasonable source (attach extra sheets as needed).

Estimated project value: \$ 2,784,000.00 Contract length (if applicable): N/A

Expenses to date: \$0

Has this commodity been previously provided to the County? Yes ☒ No

If yes, when and by whom? N/A

How was item/service procured? N/A

What is the current contract (MA) or purchase order number?

If this is a sole brand, is there an “authorized” dealers list? Yes ☒ No

Cost/Benefit Analysis: What would the cost be to utilize an alternate vendor or source? This explanation should include the savings and/or additional costs to the County by not using the preferred vendor or source. Attach additional sheets if needed.

There is no equally suitable alternative vendor found that meet the requirements for the ATCS SychroGreen software found in a single device. The comparable option would include a standard video detector on each major approach with a separate radar sensor installed on a pole approximately 500' upstream of the stop bar for each major approach. The sensor would need conduit and cabling installed from the base of the pole to the signal cabinet. The comparable option would cost almost three times as much per 4-leg intersection (\$116,060 vs. \$40,199) as the chosen hybrid option. The project includes 64 intersections, hence estimated cost savings approximately \$4.8 million. This cost does not include the risk savings from directional boring, utility conflict resolution, and ADA concerns or time savings from the additional construction work that is required for these activities.

CERTIFICATION: I have thoroughly researched the sole source or sole brand justification and fully understand the implications of Section 838.22 of the Florida Statutes:

(2) "It is unlawful for a public servant, with corrupt intent to obtain a benefit for any person or to cause unlawful harm to another, to circumvent a competitive bidding process required by law or rule by using a sole source contract for commodities or services."

(5) "Any person who violates this section commits a felony of the second degree, punishable as provided in s. 775.082, s. 775.083, or s. 775.084"

<b>Manuel Fontan</b>	MANUEL FONTAN <small>Digitally signed by MANUEL FONTAN Date: 2023.06.26 09:26:33 -04'00'</small>	<b>6/26/23</b>
REQUESTOR/EVALUATOR (PRINT)	REQUESTOR/EVALUATOR (SIGN)	DATE
Scott Brunner	Scott Brunner, PE <small>Digitally signed by Scott Brunner, PE Date: 2023.06.29 18:38:38 -07'00'</small>	<b>6/29/23</b>
<b>Richard Tornese</b>	RICHARD TORNESE <small>Digitally signed by RICHARD TORNESE Date: 2023.07.05 15:29:08 -04'00'</small>	<b>7/5/23</b>
DEPT./DIV. DIRECTOR OR DESIGNEE (PRINT)	DEPT./DIV. DIRECTOR OR DESIGNEE (SIGN)	DATE

The Purchasing Agent has reviewed the request and has completed the required due diligence per the Procurement Code Section(s) 21.25 and 21.26. The Purchasing Agent recommends the following:

☒ Sole Source ☒ Sole Brand ☐ Reasonable Source ☒ RFI attached ☐ Rejected

☐ Request Authorization to Negotiate

Additional Information:

A Request for Information (RFI)/Notice of Intent to Designate Sole Source/Sole Brand, TRN2126892F3 Sole Source, Sole Brand Designation for Iteris Vantage Next with Vantage Vector Hybrid Vehicle Detector was issued on August 14, 2023 and ended on August 21, 2023, with no response, Exhibit 1. The RFI was intended to determine the vendors who are able to supply the commodities or contractual services described in the packet or written explanation or other documentation contesting the proposed designation as a Sole Source, Sole Brand. The RFI did not ask for pricing commitment. The Purchasing Agent confirms that the required due diligence has been completed through Request for Information and market research, and recommends approval of this request. Upon approval of the Sole Source, Sole Brand designation, The County will seek to establish fixed construction contracts to include the installation of Iteris Vantage Next with Vantage Vector Hybrid vehicle detection system for real-time accurate, lane-by-lane detection at both the stop bar of the intersection and at 250'-500' in advance to the stop bar to be installed throughout the County as part of the Mobility Advancement Program ("MAP"). This is the only system that satisfies critical features that are required for the deployment of the project's SynchroGreen Adaptive Traffic Control System (ATCS). When used with adaptive traffic control systems, this solution provides accurate and robust detection data to feed into virtually any platform.

JERMAINE M. PINNOCK <small>Digitally signed by JERMAINE M. PINNOCK Date: 2023.09.19 12:36:57 -04'00'</small>	<i>Danea Cohen-Ebanks</i> <small>Digitally signed by PURCHASING MANAGER and on behalf of SONIA M. LOVETT, SENIOR PURCHASING MANAGER Date: 2023.09.19 15:49:15 -04'00'</small>
---	--

Purchasing Agent Signature

Purchasing Manager Signature

**APPROVAL AUTHORITY**

REASON/SUGGESTED ACTION (IF DISAPPROVED):

Robert Gleason  
Digitally signed by Robert Gleason  
Date: 2023.09.25 08:07:10 -04'00'

Date: **9/25/23**

Director of Purchasing Signature

## **Solicitation TRN2126892F3**

### **Sole Source/Brand Designation for Iteris Vantage Vector Hybrid Vehicle Detector**

**Bid Designation: Public**



**Broward County Board of County Commissioners**



## Bid TRN2126892F3

### Sole Source/Brand Designation for Iteris Vantage Vector Hybrid Vehicle Detector

Bid Number **TRN2126892F3**  
Bid Title **Sole Source/Brand Designation for Iteris Vantage Vector Hybrid Vehicle Detector**

Bid Start Date **Aug 14, 2023 2:17:58 PM EDT**  
Bid End Date **Aug 21, 2023 2:00:00 PM EDT**  
Question &  
Answer End Date **Aug 16, 2023 5:00:00 PM EDT**

Bid Contact **Jermaine Pinnock**  
**Purchasing Agent**  
**Purchasing**  
**954-357-6066**  
**jpinnock@broward.org**

Bid Contact **Sonia Lovett**  
**Purchasing Manager**  
**Purchasing Division**  
**954-357-8506**  
**slovett@broward.org**

Contract Duration **Not Applicable**  
Contract Renewal **Not Applicable**  
Prices Good for **Not Applicable**

Bid Comments **NOTICE OF INTENT TO DESIGNATE SOLE SOURCE/SOLE BRAND**

The Division of Purchasing is publishing this notice pursuant to the Broward County Procurement Code sections, 21.25 and 21.26, Sole Source/Sole Brand. This Request for Information (RFI)/ Notice of Intent to Designate Sole Source/Source Brand is intended to ascertain whether the commodity and/or services specified below is currently available from multiple vendors. The following commodity and/or services are thought to be available from only a single vendor. This RFI/Notice of Intent to Designate Sole Source/Sole Brand will remain posted until the due date and time indicated. **Vendors should submit their response electronically through Periscope S2G.**

**THIS IS NOT A REQUEST FOR PRICING OR A COMMITMENT TO PURCHASE.**

**Commodities and Services Required**  
Iteris Vantage Vector Hybrid Vehicle Detector

**Quantity or Term**  
One-Time Purchase.

**Using Agency**  
Broward County Highway Construction and Engineering Division (HCED)

**Known Source/Brand**  
Iteris Vantage Vector Hybrid Vehicle Detector from manufacturer's authorized distributor for Iteris

**Justification for Source/ Brand Acquisition**

Broward County Board of  
County Commissioners

The HCED as part of the Mobility Advancement Program ("MAP"), is installing vehicle detection systems throughout the County that satisfies all the detection requirements of the Adaptive Traffic Control System (ATCS). HCED is seeking a vehicle detection system that integrates with the County's existing all-in-one hybrid detection system that provides highly advanced cabinet equipment and video detection combined with radar detection.

If you are able to meet or capable of exceeding the specification requirements for these products, respond to this RFI/Notice of Intent to Designate Sole Source/Sole Brand through Periscope S2G. Provide product literature for any product to assist in determining if the commodities or services are comparable. Broward County will be the sole determinate of what is comparable.

Prospective Vendors are requested to provide information regarding their ability to supply the commodities or services described or written explanation or other documentation contesting the proposed designation as a Sole Source/Sole Brand. Regardless of any prior communications with the Purchasing Division, all vendors interested in responding to this notice must submit a response to this posting containing complete responses to all of the information requested.

All Vendor responses will be evaluated by the Using Agency which will be the sole determinate power in establishing the approved equal status of the commodities or services offered by the vendor. If it is determined in writing by the agency, after reviewing any information received from prospective Vendors, that the commodities are available only as sole brand, a solicitation will be issued for the sole brand for processing and approval by the appropriate award authority.

The Director of Purchasing shall consider such submittals and notify all submitting vendors of the decision whether to designate a sole source, only reasonable source or sole brand, which decision shall not be subject to objection, protest or appeal under the Broward County procurement code.

**Questions and Answers:** The County provides a specified time for Vendors to ask questions and seek clarification regarding the requirements of the solicitation. All questions or clarification inquires must be submitted through Periscope S2G by the date and time referenced in the solicitation document (including any addenda). The County will respond to all questions via Periscope S2G.

**Please read the entire form very carefully before responding to this notice.**

**Item Response Form**

Item **TRN2126892F3--01-01 - Iteris Vantage Vector Hybrid Vehicle Detector**

Quantity **1 each**

Prices are not requested for this item.

Delivery Location **Broward County Board of County  
Commissioners**

No Location Specified

**Qty 1**

**Description**

The Iteris Vantage Next with Vantage Vector Hybrid vehicle detection system meet the requirements for the project's SynchroGreen Adaptive Traffic Control System (ATCS) deployment.

## Question and Answers for Bid #TRN2126892F3 - Sole Source/Brand Designation for Iteris Vantage Vector Hybrid Vehicle Detector

### Overall Bid Questions

There are no questions associated with this bid.

**Bid Tabulation Packet  
for  
Solicitation TRN2126892F3**

**Sole Source/Brand Designation for Iteris Vantage Vector  
Hybrid Vehicle Detector**

**Bid Designation: Public**



**Broward County Board of County Commissioners**

## Bid #TRN2126892F3 - Sole Source/Brand Designation for Iteris Vantage Vector Hybrid Vehicle Detector

Creation Date **Aug 14, 2023**

End Date **Aug 21, 2023 2:00:00 PM EDT**

Start Date **Aug 14, 2023 2:17:58 PM EDT**

Awarded Date **Not Yet Awarded**

TRN2126892F3-01-01 Iteris Vantage Vector Hybrid Vehicle Detector					
Supplier	Unit Price	Qty/Unit	Total Price	Attch.	Docs
			No Bids		
Agency Product Code:		Supplier Notes:			
Agency Notes:					

\*\*\*

iteris®



[Home](#) >> [Our Solutions](#) >> [Traffic Detection](#) >> [Vantage Vector](#)



## The Power Of Vantage Vector Hybrid Detection

The Vantage Vector® system is an all-in-one detection sensor that combines video and radar for stop bar and advance zone detection to enable advanced safety and adaptive control applications.

Compatible with the Vantage Next® and Vantage Apex™ systems, the Vantage Vector detection sensor includes all the proven benefits of Iteris video detection, including high accuracy, superior reliability, remote video viewing, pedestrian detection, and bicycle differentiation, and no trenching or pavement cutting for installation.

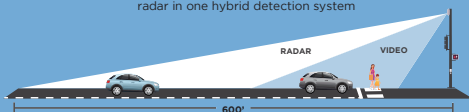
# VANTAGE VECTOR® WITH NEXT®

THE ONLY DETECTION SYSTEM  
YOU WILL EVER NEED.



## VIDEO AND RADAR

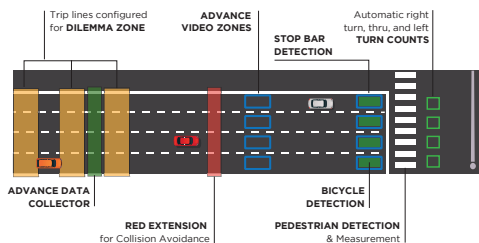
Vantage Vector with Next is state-of-the-art video with advanced radar in one hybrid detection system



DETECT VEHICLES UP TO 600 FEET **AND** GET INDIVIDUAL  
LANE BY LANE DETECTION

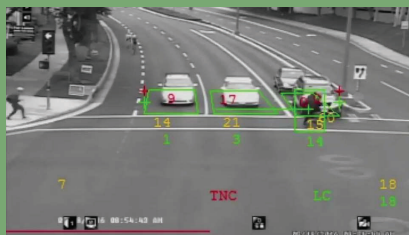
## REDUCE RED-LIGHT RUNNING AND COLLISIONS

Improve safety and save lives with Dilemma zone and Red clearance for red-light runners using Speed Sensitive Radar + Advanced Controller



## PROTECT VULNERABLE ROAD USERS

The detection system includes SmartCycle for bicycle detection and differentiation and PedTrax for pedestrian measurement and counting.



## GET MORE DETAILED AND ACCURATE TRAFFIC DATA

When used with adaptive traffic control systems, this one of a kind solution provides accurate and robust detection data to feed into virtually any platform.



Vantage Next with Vantage Vector is fully compatible with **VantageLive!** & **Iteris SPM** software.



## SAVE TIME AND MONEY

With quick installation and no need to cut loops or pull extra cables.

8/23/23, 11:48 AM

Contact | Iteris, Inc.

iteris

Why Iteris

Industries We Serve

Our Solutions

Company

Careers

Resources

Contact Us



## Consulting Services



### ARIZONA

**Phoenix**  
602.819.9134  
[Contact](#)

### CALIFORNIA

**Oakland**  
1999 Harrison Street  
Suite 1675  
Oakland, CA 94612-3520  
510.295.4607  
[Contact](#) | [Map](#)

**Los Angeles**  
801 S. Grand Ave.  
Suite 750  
Los Angeles, CA 90017-4633  
213.488.0345  
[Contact](#) | [Map](#)

**Santa Ana**  
1700 Carnegie Ave.  
Suite 100  
Santa Ana, CA 92705-5551  
949.270.9400  
[Contact](#) | [Map](#)

### FLORIDA

**Tampa**  
1907 N US 301  
Suite 120  
Tampa, FL 33619  
813.319.3790  
[Contact](#) | [Map](#)

### GEORGIA

**Atlanta**  
770.613.9558  
[Contact](#)

### IDAHO

**Idaho Falls**  
208.528.8538  
[Contact](#) | [Map](#)

### ILLINOIS

**Geneva**  
319 West State Street  
Suite 200  
Geneva, IL 60134  
630.394.2455  
[Contact](#) | [Map](#)

### MISSOURI

**St. Louis**  
100 South 4th Street, Suite 550  
St. Louis, MO 63102  
314.899.5866  
[Contact](#) | [Map](#)

### NEBRASKA

**Omaha**  
531.200.9127  
[Contact](#) | [Map](#)

### NORTH DAKOTA

**Grand Forks**  
P.O. Box 12512  
Grand Forks, ND 58208  
218.779.2320  
[Contact](#)

### TEXAS

**Austin**  
1250 S Capital of Texas Hwy  
Bldg 1, Suite 330  
Austin, TX 78746  
512.716.0808  
[Contact](#) | [Map](#)

**Houston**  
713.806.9571  
[Contact](#)

### VIRGINIA

**Fairfax**  
11781 Lee Jackson Memorial  
Hwy.  
Suite 625  
Fairfax, VA 22033  
703.471.0838  
[Contact](#) | [Map](#)

**Richmond**  
1019 Hull Street  
1st Floor  
Richmond, VA 23224  
804.658.0475  
[Contact](#) | [Map](#)

**Virginia Beach**  
144 Business Park Dr.  
Suite 205  
Virginia Beach, VA 23462  
757.271.6903  
[Contact](#) | [Map](#)





[Why Iteris](#)

[Industries We Serve](#)

[Our Solutions](#)

[Company](#)

[Careers](#)

[Resources](#)

[Contact Us](#)

Sales Team & Distributors



[Western U.S. / Canada](#)

[Central U.S.](#)

[Eastern U.S./Puerto Rico](#)

[Latin America / Caribbean](#)

[Other](#)



**Alabama**

Temple, Inc.  
800.633.3221

[Contact Iteris](#)

**Arkansas**

Temple, Inc.  
800.633.3221

[Contact Iteris](#)

**Connecticut**

Ocean State Signal  
401. 231.6780

[Contact Iteris](#)

**Delaware**

Traffic Products  
610. 644.8150

[Contact Iteris](#)

**Florida (Central / Southern)**

FDOT Districts 1, 4, 5, 6 and 7  
Iteris Direct

407.383.1845  
[Contact Iteris](#)

**Florida (Northern)**

FDOT Districts 2 and 3  
Temple

800.633.3221  
[Contact Iteris](#)

**Georgia**

Temple  
800.633.3221

[Contact Iteris](#)

**Kentucky**

Baldwin & Sours  
614.851.8800

[Contact Iteris](#)

**Louisiana**

Temple  
800.633.3221

[Contact Iteris](#)

**Maine**

Ocean State Signal  
401. 231.6780

[Contact Iteris](#)

**Maryland**

MoboTrex  
804.794.1592

[Contact Iteris](#)

**Massachusetts**

Ocean State Signal  
401. 231.6780

[Contact Iteris](#)

**Mississippi**

Temple  
800.633.3221

[Contact Iteris](#)

**New Hampshire**

Ocean State Signal  
401. 231.6780

[Contact Iteris](#)

**New Jersey**

Traffic Products  
610. 644.8150

[Contact Iteris](#)

**New York**

Marbelite  
732.292.2100

[Contact Iteris](#)

**North Carolina**

Temple  
800.633.3221

[Contact Iteris](#)

**Ohio**

Baldwin & Sours  
614.851.8800

[Contact Iteris](#)

**Pennsylvania**

Traffic Products  
610. 644.8150

[Contact Iteris](#)

**Puerto Rico**

Iteris Direct  
407.292.9776

[Contact Iteris](#)

**Rhode Island**

Ocean State Signal  
401. 231.6780

[Contact Iteris](#)

**South Carolina**

Temple  
800.633.3221

[Contact Iteris](#)

**Tennessee**

Temple  
800.633.3221

[Contact Iteris](#)

**Vermont**

Ocean State Signal  
401. 231.6780

[Contact Iteris](#)

**Virginia**

MoboTrex  
804.794.1592

[Contact Iteris](#)

**Washington, D.C.**

MoboTrex  
804.794.1592

[Contact Iteris](#)

**West Virginia**

MoboTrex  
804.794.1592

[Contact Iteris](#)



Follow Us



Newsletter Sign-up >

Quick Links

[Resource Center](#)

[Investor Relations](#)

[Careers](#)

[Contact Us](#)