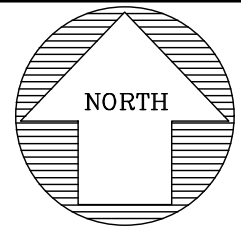
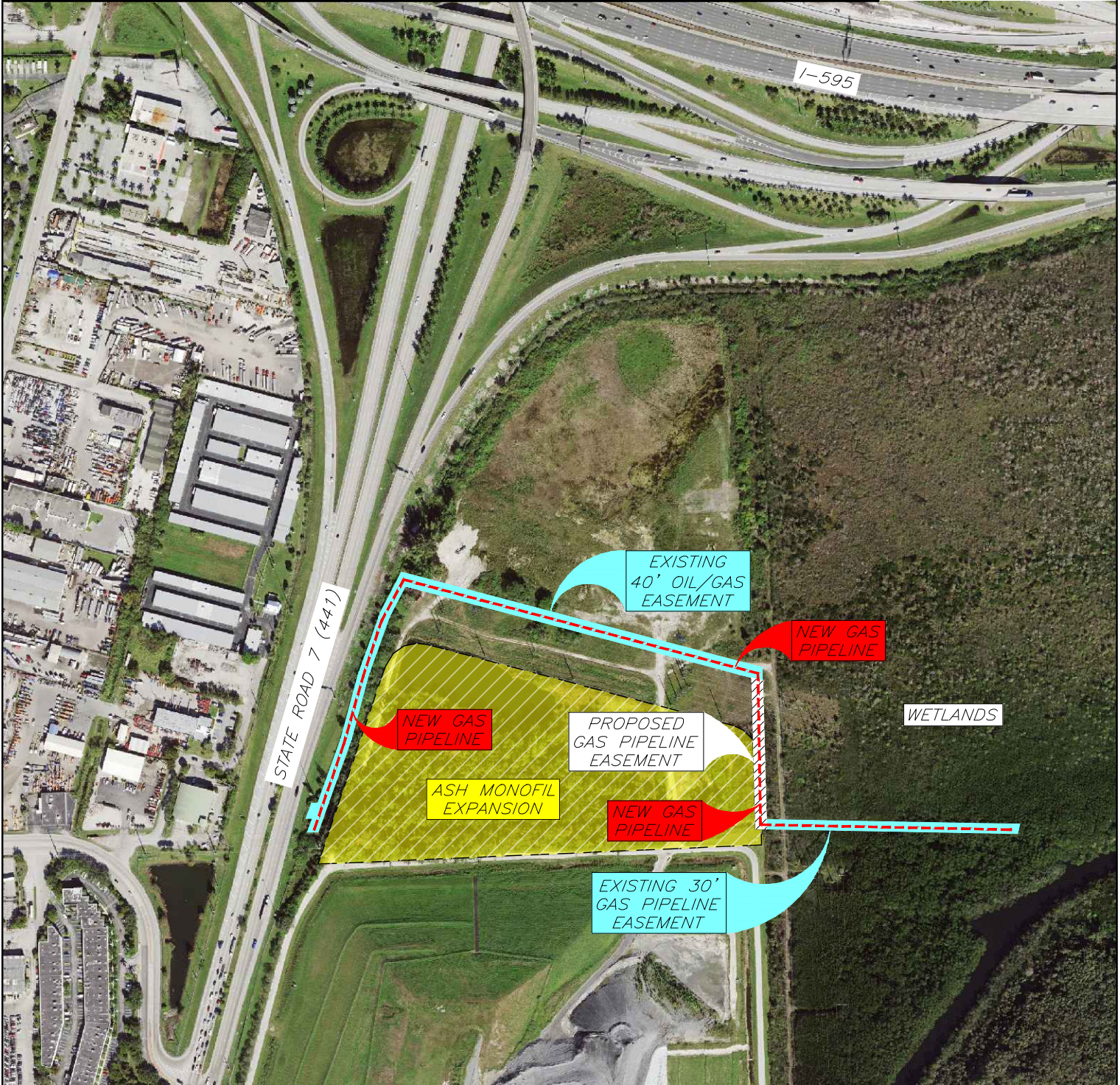


# LOCATION SKETCH

PROJECT: GRANT OF EASEMENT FOR UNDERGROUND GAS PIPELINE RELOCATION TO  
ALLOW FOR LANDFILL EXPANSION AT "ROUTE 441 RESOURCE RECOVERY SITE"  
FROM: BROWARD COUNTY  
TO: FLORIDA GAS TRANSMISSION COMPANY  
MUNICIPALITY: COUNTY REGIONAL FACILITY  
COMMISSION DISTRICT: 6



SECTION 24, TOWNSHIP 50 SOUTH, RANGE 41 EAST AND SECTION 19, TOWNSHIP 50 SOUTH, RANGE 42 EAST



SCALE NOT TO SCALE	DATE OF SKETCH 9/21/2022	DRAWN BY M. NOTTINGHAM	CHECKED BY E. AUGUSTO	DATE 9/21/2022	FILE LOCATION 2022-JOBS\2022-120\DWGS\2022-120.DWG
-----------------------	-----------------------------	---------------------------	--------------------------	-------------------	---

**BROWARD COUNTY HIGHWAY CONSTRUCTION & ENGINEERING DIVISION**

1 UNIVERSITY DRIVE, SUITE 300 — PLANTATION, FLORIDA 33324-2038

Phone # (954) 577-4555