

EXHIBIT 2

SECTION I
AMENDMENT REPORT
BROWARD COUNTY LAND USE PLAN
PROPOSED AMENDMENT PCNRM 24-2

**(NATURAL RESOURCE MAP SERIES -
EASTERN BROWARD COUNTY WETLANDS MAP)**

RECOMMENDATIONS/ACTIONS

DATE

I. Planning Council Staff Transmittal Recommendation

February 13, 2024

Planning Council staff recommends approval of the proposed amendment to the Natural Resource Map Series - Eastern Broward County Wetlands Map.

As the Planning Council is aware, the Broward County Charter requires at least one Planning Council public hearing and Article 1.2(A) of the *Administrative Rules Document: BrowardNext* outlines the following circumstances in which a second Planning Council public hearing may be recommended or required:

- (1) At its initial public hearing, the Planning Council takes an action to recommend denial of a proposed amendment; or
- (2) At its initial public hearing, the Planning Council takes an action to recommend approval subject to meeting specific criteria or policy prior to a second Planning Council public hearing; or
- (3) At its initial public hearing, the Planning Council votes by a majority of the members present with a minimum of six (6) affirmative votes for a second Planning Council public hearing; or
- (4) If the County Commission requests by a vote of the majority of members present to request a second Planning Council public hearing; or
- (5) If an objection or comment on adverse impacts to important state resources or facilities is issued during the State of Florida Chapter 163 review process; or
- (6) If State of Florida Chapter 163 requires or is modified to require a second local planning agency public hearing.

If the Planning Council chooses to require a second Planning Council public hearing per Article 1.2(A)(1)(2) or (3), such recommendation must be made as part of its motion.

RECOMMENDATIONS/ACTIONS (continued)

DATE

II. Planning Council Transmittal Recommendation

February 22, 2024

Approval per Planning Council staff transmittal recommendation, including not requiring a second Planning Council public hearing. (Vote of the board; Unanimous; 17-0: Abramson, Brunson, Castillo, Fernandez, Fisher, Gomez, Greenberg, Hardin, Harrison, Horland, Newbold, Railey, Rosenof, Ryan, Werthman, Zeman and DiGiorgio)

SECTION II
AMENDMENT REPORT
PROPOSED AMENDMENT PCNRM 24-2

INTRODUCTORY INFORMATION/PLANNING ANALYSIS

Pursuant to Policy 2.22.3 of the BrowardNext - Broward County Land Use Plan, the Broward County Resilient Environment Department (BCRED) is required to update the Natural Resource Map Series - Eastern Broward County Wetlands Map (Map) every other year. The Map was previously updated in 2022 based on actions from January 1, 2020 through December 31, 2021. The proposed revisions are based on actions that the BCRED staff has taken from January 1, 2022 through December 31, 2023. Those actions include observing or delineating wetlands on a parcel, issuing an Environmental Resource License which formally identifies wetlands or removing wetlands that are no longer environmentally significant. These actions resulted in the addition of 353.58 acres and the removal of 29.97 acres. In addition, sites that were determined to be scrivener's errors due to a lack of or no historical or current evidence of wetlands have been removed from the Map; these sites may not be included in the removal total based on the type of error. Attachment 1 provides a detailed listing of the proposed additions and deletions. Attachment 2 depicts the revised Broward County Wetlands Map.

SECTION III
AMENDMENT REPORT
PROPOSED AMENDMENT PCNRM 24-2

ATTACHMENTS

1. Additions to and Removals from the Broward County Wetlands Map Tables from January 1, 2022 through December 31, 2023
2. Revised Broward County Wetlands Map dated December 31, 2023

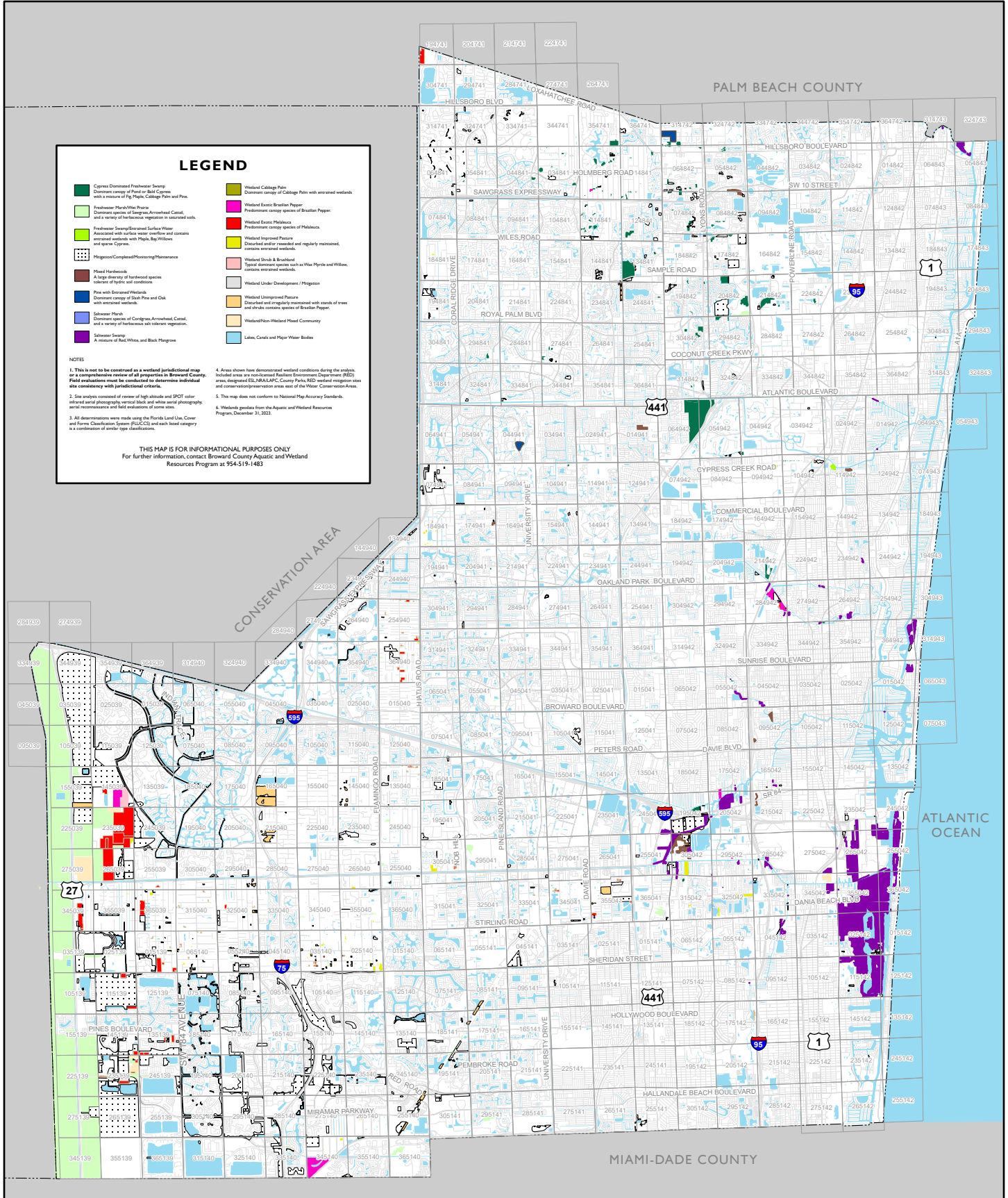
S-T-R	License #	Folio #	Original	New	Notes	Acres Added	Acres Removed	Scrivener's Error
32-47-41	WD1998	474132000016	Freshwater Marsh/Wet Prairie	None	Impacted		0.24	Yes
15-50-42	DF19-1058	504215010130	Mangroves	None	Impacted		0.05	No
25-49-40	DF22-1188	494025022720	Mitigation Monitoring Maintenance or Completed	None	Impacted after-the-fact		0.45	No
28-48-42	DF88-1103	484228070050	Mitigation Monitoring Maintenance or Completed	Cypress Dominated Freshwater Swamp	Misc GIS changes			Yes
25-49-40	WD 00	494025031260	Wetland Exotic Melaleuca	None	Impacted		0.24	Yes
07-49-41	DF10-1107	494107010171	Wetland Exotic Melaleuca	None	Impacted		0.02	Yes
34-50-40	GL-SR2111-012	504034030201	Wetland Improved Pasture	None	Impacted		0.19	No
03-51-41	DF16-1205	514003050010	Wetland Under Development	Mitigation Monitoring Maintenance or Completed	Misc GIS changes			Yes
18-48-41	DF18-1021	484118040010	Wetland Under Development	None	Impacted		0.2	No
20-48-40	DF02-1015	484220040010	Wetland Under Development	Mitigation Monitoring Maintenance or Completed	Misc GIS changes			Yes
02-51-40	DF03-1213	514002030030	Wetland Under Development	Mitigation Monitoring Maintenance or Completed	Misc GIS changes			Yes
17-51-42	DF20-1062	514017020050	Wetland Under Development	Mitigation Monitoring Maintenance or Completed	New mitigation area			No
26-50-39	DF08-1025	503926000020	Wetland Under Development	None	License expired		0.6	No
13-48-41	DF14-1165	484113071240	Wetland Under Development	Mitigation Monitoring Maintenance or Completed	New mitigation area			No
18-48-40	DF06-1273	484118020070	Wetland Under Development	Mitigation Monitoring Maintenance or Completed	New mitigation area			No
29-51-41	DF16-1088	514029140210	Wetland Under Development	Mitigation Monitoring Maintenance or Completed	New mitigation area			No
34-50-41	DF15-1163	504134200010	Wetland Under Development	Mitigation Monitoring Maintenance or Completed	Misc GIS changes			No
03-51-40	WD2208-009	514003010361	None	Wetland Unimproved Pasture	WD	0.61		No
34-50-39	WD2206-003	503934150010	None	Wetland Unimproved Pasture	WD	0.16		No
34-50-40	WD2207-008	504034010301	None	Saltwater Swamp	WD	0.79		No
17-51-42	WD2205-010	514217020040	None	Wetland Exotic Melaleuca	WD	2.35		No
29-50-40	WD2303-006	504029120020	None	Wetland Unimproved Pasture	WD	5.48		No
16-50-40	WD2302-007	504016000060	None	Wetland Unimproved Pasture	WD	136.09		No
03-51-40	WD2111-006	514003010492	None	Wetland Unimproved Pasture	WD	1.36		No
32-50-40	WD2007-004	504032020200	None	Wetland Exotic Melaleuca	WD	3.51		No
21-50-40	WD2007-007	504021010310	None	Wetland Unimproved Pasture	WD	27.62		No
34-50-41	WD2104-006	504134010880	None	Wetland Exotic Melaleuca	WD	3.64		No
35-50-39	WD2110-011	503935080040	None	Wetland Unimproved Pasture	WD	0.86		No
35-50-39	WD2106-004	503935040280	None	Wetland Unimproved Pasture	WD	0.27		No
06-51-40	WD2112-013	514006030071	None	Wetland Unimproved Pasture	WD	0.62		No
19-50-41	WD2204-006	504119010192	None	Wetland Exotic Melaleuca	WD	3.68		No
01-50-40	WD2205-001	504001010404	None	Wetland Unimproved Pasture	WD	0.63		No
31-50-40	WD2208-014	504031010140	None	Wetland Exotic Melaleuca	WD	0.96		No
36-50-39	WD2208-016	503936130020	None	Wetland Unimproved Pasture	WD	0.54		No
05-51-40	WD2209-009	514005040030	None	Wetland Unimproved Pasture	WD	0.54		No
32-50-40	WD2209-011	504032010041	None	Wetland Exotic Melaleuca	WD	0.38		No
31-50-40	WD2210-001	504031010045	None	Wetland Unimproved Pasture	WD	0.54		No
03-51-40	WD2210-002	514003010352	None	Wetland Unimproved Pasture	WD	0.81		No
25-50-39	WD2210-011	503925020095	None	Wetland Unimproved Pasture	WD	0.37		No
17-48-42	WD2210-016	484217000051	None	Cypress Dominated Freshwater Swamp	WD	0.74		No
24-50-40	WD2210-021	504024010060	None	Wetland Unimproved Pasture	WD	0.84		No
12-50-40	WD2211-003	504012000170	None	Wetland Unimproved Pasture	WD	1.47		No
02-51-40	WD2212-003	514002010064	None	Wetland Unimproved Pasture	WD	0.56		No
03-51-40	WD2301-012	514003010176	None	Wetland Unimproved Pasture	WD	1.03		No
34-50-39	WD2302-005	503934150020	None	Wetland Unimproved Pasture	WD	0.42		No
36-50-39	WD2302-014	503936010122	None	Wetland Unimproved Pasture	WD	0.53		No
07-48-42	WD2302-016	484207100030	None	Cypress Dominated Freshwater Swamp	WD	3.31		No
30-50-41	WD2303-009	504130010040	None	Wetland Unimproved Pasture	WD	5.89		No
35-50-40	WD2304.001	504035010101	None	Wetland Unimproved Pasture	WD	0.57		No
31-50-40	WD2305-006	504031010492	None	Wetland Unimproved Pasture	WD	1.02		No
36-50-39	WD2305-014	503936080010	None	Wetland Exotic Melaleuca	WD	28.36		No
25-50-39	WD2307-001	503925050010	None	Wetland Unimproved Pasture	WD	2.27		No
36-49-40	WD2307-003	494036020210	None	Wetland Unimproved Pasture	WD	1.29		No
25-50-40	WD2308-001	504025000010	None	Wetland Unimproved Pasture	WD	5.39		No
31-50-40	WD2308-002	504031010571	None	Wetland Unimproved Pasture	WD	1.09		No

S-T-R	License #	Folio #	Original	New	Notes	Acres Added	Acres Removed	Scrivener's Error
15-51-39	DF94-1102	513915060010	Mitigation Monitoring Maintenance or Completed	Freshwater Marsh/Wet Prairie	Misc GIS changes			Yes
01-48-41	DF89-1026	484101013542	Mitigation Monitoring Maintenance or Completed	Cypress Dominated Freshwater Swamp	Misc GIS changes			Yes
02-51-40	DF05-1290	514002080016	Mitigation Monitoring Maintenance or Completed	Wetland Unimproved Pasture	Misc GIS changes			Yes
13-50-40	DF22-1150	504013010249	Wetland Improved Pasture	None	Impacted		0.4	No
27-51-40	DF03-1057	514727130110	Wetland Shrub & Brushland	Mitigation Monitoring Maintenance or Completed	Misc GIS changes			Yes
36-50-39	unlicensed	503936010111	Wetland Shrub & Brushland	None	Misc GIS changes		1.58	Yes
34-50-41	DF15-1163	504134200010	Wetland Under Development	Mitigation Monitoring Maintenance or Completed	Under development and now built	1		No
13-50-40	WD2304-003	504013010147	None	Wetland Exotic Melaleuca	WD	0.49		No
01-51-39	WD2204-007	513901030190	None	Wetland Unimproved Pasture	WD	0.06		No
21-50-40	WD2301-015	504021010111	None	Wetland Unimproved Pasture	WD	0.2		No
02-51-40	WD2204-017	514002010263	None	Wetland Unimproved Pasture	WD	0.31		No
25-49-40	WD2307-012	494025540050	None	Wetland Exotic Melaleuca	WD	0.19		No
01-50-40	WD2306-017	504001010101	None	Wetland Unimproved Pasture	WD	0.71		No
36-49-40	WD2307-003	494036020210	None	Freshwater Marsh/Wet Prairie	WD	2		No
23-48-41	DF93-1021	484123000010	None	Wetland Unimproved Pasture	Misc GIS changes	12.1		Yes
36-50-39	WD2111-010	503936100300	None	Wetland Unimproved Pasture	WD	0.56		No
31-50-40	WD2206-006	504031010023	None	Wetland Exotic Melaleuca	WD	0.35		No
35-50-42	WD0302-004	504235000360	None	Saltwater Swamp	WD with new ERL	0.77		No
21-48-41	DF16-1067	484221120010	None	Mitigation Monitoring Maintenance or Completed	late addition to map	2		No
01-51-39	WD2310-003	513901010313	None	Wetland Unimproved Pasture	WD	0.38		No
36-50-39	WD2311-007	503936100530	None	Wetland Unimproved Pasture	WD	0.7		No
03-51-40	WD2311-015	514003010452	None	Wetland Unimproved Pasture	WD	0.51		No
03-51-40	WD2310-007	514003010363	None	Wetland Unimproved Pasture	WD	1.29		No
05-51-40	WD2305-012	514005010070	None	Wetland Unimproved Pasture	WD	0.52		No
32-50-40	WD2302-001	504032040162	None	Wetland Unimproved Pasture	WD	0.22		No
35-50-39	WD2306-009	503935080180	None	Wetland Unimproved Pasture	WD	0.67		No
03-51-40	WD2309-007	514003010322	None	Wetland Unimproved Pasture	WD	1.07		No
17-49-41	WD2310-001	494117080010	None	Mixed Hardwood	WD	1.4		No
01-51-39	WD2112-001	513901030230	None	Wetland Unimproved Pasture	WD	0.39		No
36-50-39	WD2112-002	503936140050	None	Wetland Unimproved Pasture	WD	0.29		No
32-50-40	WD2304-008	504032040010	None	Wetland Unimproved Pasture	WD	3.4		No
36-50-39	WD2306-014	503936010057	None	Wetland Unimproved Pasture	WD	1.71		No
36-50-39	WD1211-005	503936010056	None	Wetland Unimproved Pasture	late addition to map	0.44		No
32-50-40	WD2308-009	504032050510	None	Wetland Unimproved Pasture	WD	0.4		No
06-51-40	WD2109-005	514006030126	None	Wetland Unimproved Pasture	WD	0.41		No
06-51-40	WD2207-005	514006040120	None	Wetland Unimproved Pasture	WD	0.56		No
35-50-39	WD2209-004	503935020120	None	Wetland Unimproved Pasture	WD	0.47		No
34-50-42	DF22-1408	504234610011	None	Saltwater Swamp	WD	12.7		No
36-50-39	WD2304-010	503936010116	None	Wetland Unimproved Pasture	WD	0.39		No
03-51-40	WD2301-012	514003010176	None	Wetland Unimproved Pasture	WD	1.03		No
02-48-41	WD2011-002	484102000297	None	Wetland Exotic Melaleuca	WD	0.41		No
11-48-40	DF04-1024	484111080030	None	Mitigation Monitoring Maintenance or Completed	late addition to map	3.56		No
36-50-39	DF94-1119	503936100020	None	Mitigation Monitoring Maintenance or Completed	late addition to map	0.36		No
30-51-40	DF03-1261	514130080020	None	Mitigation Monitoring Maintenance or Completed	late addition to map	2.61		No
01-51-39	WD2201-002	513901010031	None	Wetland Exotic Melaleuca		1.66		No
18-51-49	DF93-1007	514118210010	None	Mitigation Monitoring Maintenance or Completed	late addition to map	1.31		No
28-51-41	DF04-1078	514128010030	None	Mitigation Monitoring Maintenance or Completed	late addition to map	28.92		No
35-50-42	WD2004-001	504235000220	None	Saltwater Swamp		3.16		No
13-51-39	DF03-1167	513913140013	None	Mitigation Monitoring Maintenance or Completed	late addition to map	1.53		No
07-51-40	DF01-1070	514007024100	None	Mitigation Monitoring Maintenance or Completed	late addition to map	13.78		No
18-50-41	DF15-1259	504118170801	None	Mitigation Monitoring Maintenance or Completed			26	No
TOTAL						353.58	29.97	

ATTACHMENT 2 BROWARD COUNTY LAND USE PLAN NATURAL RESOURCE MAP SERIES



Eastern Broward County Wetlands



LEGEND

Cypress Dominated Freshwater Swamp	Wetland Cabbage Palm
Freshwater Marsh/Water Prairie	Wetland Exotic: Brazilian Pepper
Freshwater Swamp/Scrubbed Surface Water	Wetland Exotic: Melaleuca
Saltwater Marsh	Wetland Improved Pasture
Saltwater Swamp	Wetland Shrub & Broadleaf
Wetland Under Development / Progression	Wetland Unimproved Pasture
Wetland Under Development / Progression	Wetland/Non-Wetland Mixed Community
Lakes, Canals and Major Water Bodies	

NOTES

- This is not to be construed as a wetland jurisdictional map or a comprehensive wetland delineation in Broward County. Field evaluations must be conducted to determine individual site consistency with jurisdictional criteria.
- Site analysis consisted of review of high altitude and SPOT color infrared aerial photography, vertical block and white aerial photography, aerial reconnaissance and field evaluations of some sites.
- All determinations were made using the Florida Land Use, Cover and Form Classification System (FLUCCS) and each land category is a combination of similar type classifications.
- Areas shown have demonstrated wetland conditions during the project. Included areas are non-jurisdictional Wetland Encroachment (RE) areas designated by the Florida Department of Environmental Protection (FDEP) and cover vegetation for restoration areas east of the Water Conservation Area.
- This map does not conform to National Map Accuracy Standards.
- Wetlands data from the Aquatic and Wetland Resources Program, December 31, 2023.

THIS MAP IS FOR INFORMATIONAL PURPOSES ONLY
For further information, contact Broward County Aquatic and Wetland Resources Program at 954-519-1483

SOURCES
Broward County Aquatic and Wetland Resources, Broward County Planning Council

