

**BROWARD MUNICIPAL SERVICES DISTRICT  
SCHOOL ZONE SPEED DATA SUMMARY**

SCHOOL NAME	ROAD NAME	DIRECTION OF TRAVEL	MORNING-SCHOOL ARRIVALS			MID-DAY (SCHOOL DAY - 8AM TO 2PM)			AFTERNOON - SCHOOL DISMISSALS		
			TRAFFIC COUNT	SPEEDING VEHICLES	%	TRAFFIC COUNT	SPEEDING VEHICLES	%	TRAFFIC COUNT	SPEEDING VEHICLES	%
Meadowbrook Elementary School	SW 46 Ave	Northbound	163	61	37%	370	86	23%	57	30	53%
Meadowbrook Elementary School	SW 46 Ave	Southbound	158	32	20%	309	79	26%	39	15	38%
Meadowbrook Elementary School	SW 43 Way	Northbound	278	12	4%	514	13	3%	68	3	4%
Meadowbrook Elementary School	SW 43 Way	Southbound	147	16	11%	354	28	8%	29	2	7%
Meadowbrook Elementary School	SW 21 Mnr	Eastbound	130	0	0%	298	0	0%	78	1	1%
Meadowbrook Elementary School	SW 21 Mnr	Westbound	229	8	3%	376	6	2%	26	1	4%
Dillard High School	NW 13 Ct	Eastbound	107	25	23%	154	32	21%	51	19	37%
Dillard High School	NW 13 Ct	Westbound	64	17	27%	168	18	11%	57	25	44%
Dillard High School	NW 27 Ave	Northbound	295	71	24%	1,156	305	26%	316	83	26%
Dillard High School	NW 27 Ave	Southbound	318	81	25%	1,117	219	20%	304	35	12%
			MORNING-SCHOOL ARRIVALS			MID-DAY			AFTERNOON - SCHOOL DISMISSALS		
TOTAL ALL TRAFFIC COUNTS & SPEEDING VEHICLES			TRAFFIC COUNT	SPEEDING VEHICLES	%	TRAFFIC COUNT	SPEEDING VEHICLES	%	TRAFFIC COUNT	SPEEDING VEHICLES	%
			1,889	323	17%	4,816	786	16%	1,025	214	21%

\*\*\* Speeding vehicles are defined as any vehicle exceeding the reduced school zone speed limit or posted speed limit by 10MPH+.

The speed data was collected for a 24 hour day period, during the school day.

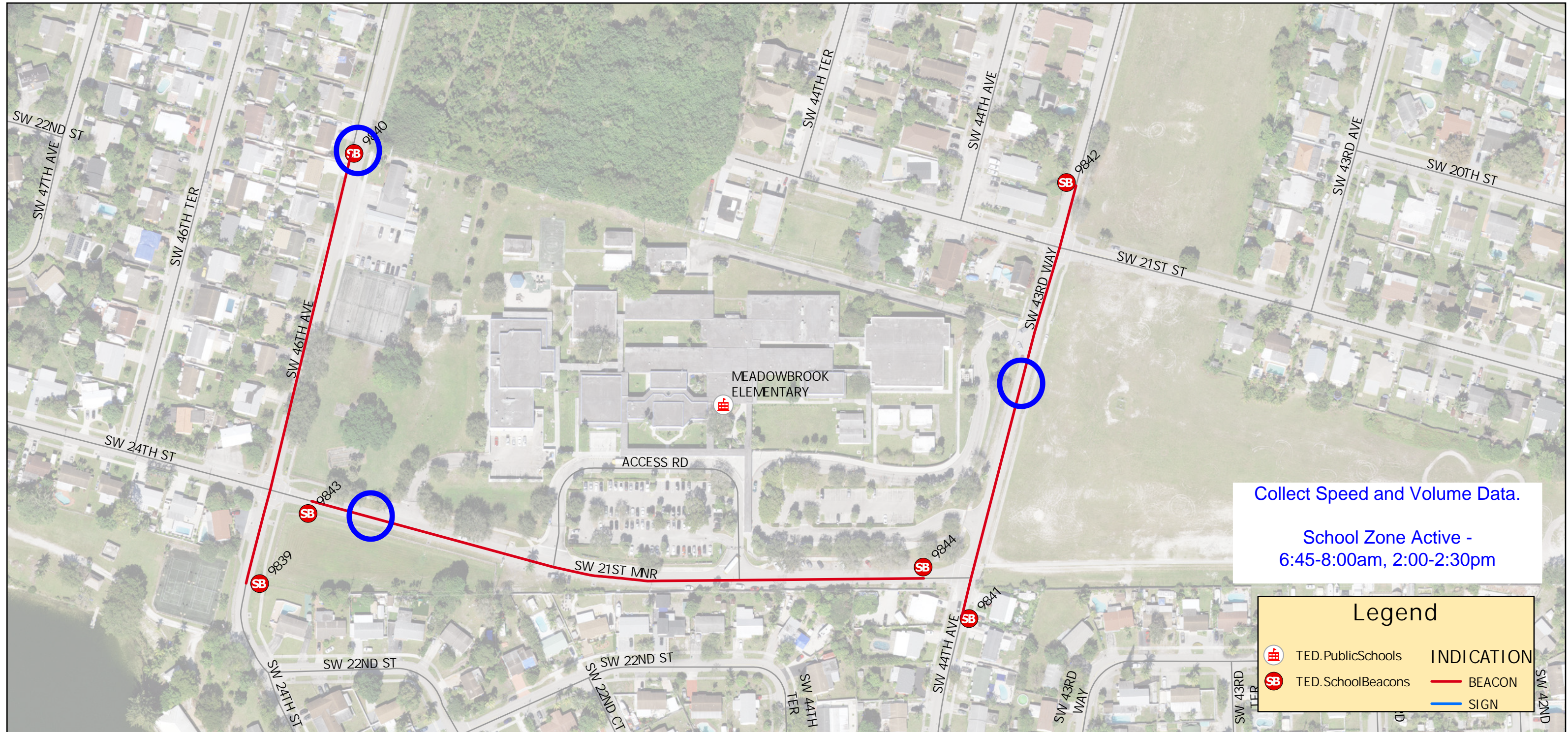
The morning and afternoon speed data, during the schools arrival and dismissal times, indicates the total number of vehicles and the number of vehicles speeding during the active "school zone" time at the reduced school zone speed.

Mid-day speed data indicates the total number of vehicles and the number of vehicles speeding with the posted speed limit of 25 MPH, during the school day when school zone is not active.

Meadowbrook Elementary - School Zone Active - 6:45am-8:00am, 2:00pm-2:30pm

Dillard High School - School Zone Active - 6:30am-8:00am, 2:00pm-3:10pm













# Roosevelt Garden



School Zone Active -  
6:30-8:00am, 2:00-3:10pm

### Legend

-  TED.PublicSchools
  TED.SchoolBeacons
 **INDICATION**  
 BEACON  
 SIGN



Prepared By:  
Systems Section  
Traffic Engineering Division  
Public Works

This map is for conceptual purposes only and is not intended for legal boundary determinations.

