

# LOCATION MAP

SHEET 1 OF 1

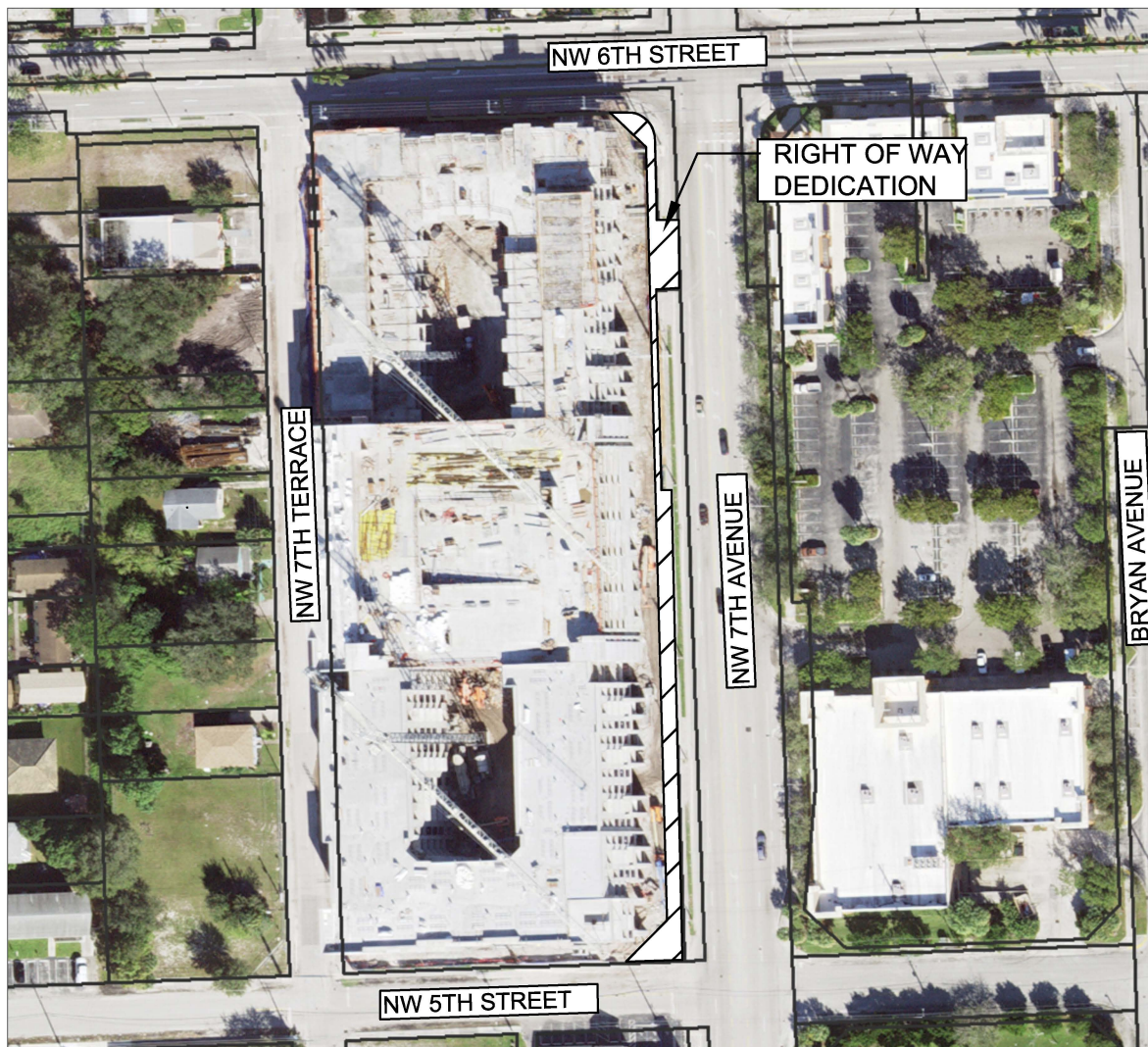
SECTION 03, TOWNSHIP 50 SOUTH, RANGE 42 EAST

PROJECT: PD-2024-05  
FROM: WEST VILLAGE, LLC  
TO: BROWARD COUNTY  
MUNICIPALITY: CITY OF FORT LAUDERDALE  
COMMISSION DISTRICT: 8



## LEGEND:

 = RIGHT OF WAY DEDICATION



Scale:	Drawn By:	Date:	Checked By:	Date:	File Location:
Not To Scale	SB	07/03/2024	TG	02/20/2025	E:\RW\Location Maps\Deeds and Easements\PD-2024-05.dwg

BROWARD COUNTY HIGHWAY CONSTRUCTION & ENGINEERING DIVISION