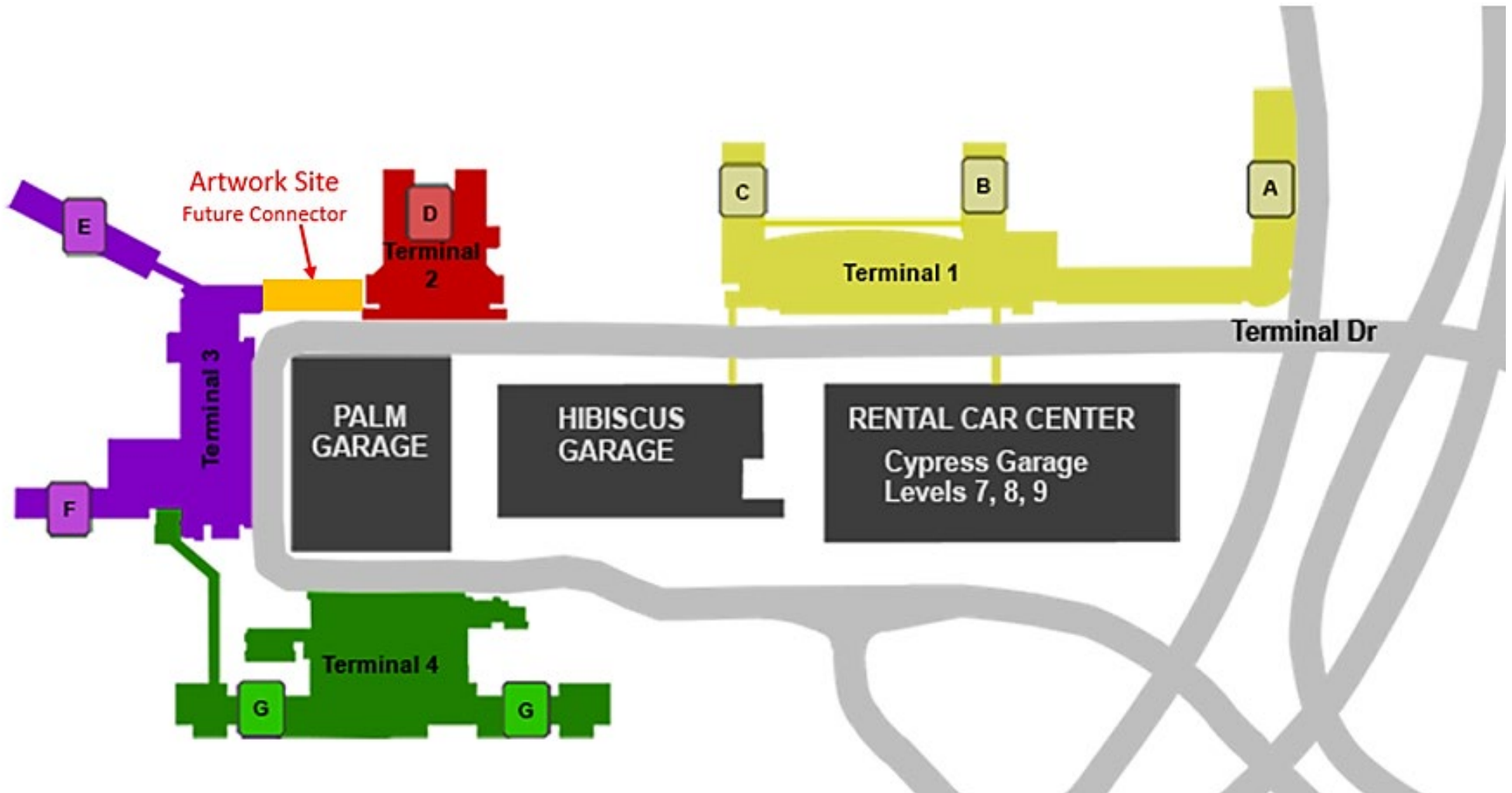


Terminal 2-3 Connector Art Lounge Project
Fort Lauderdale-Hollywood International Airport

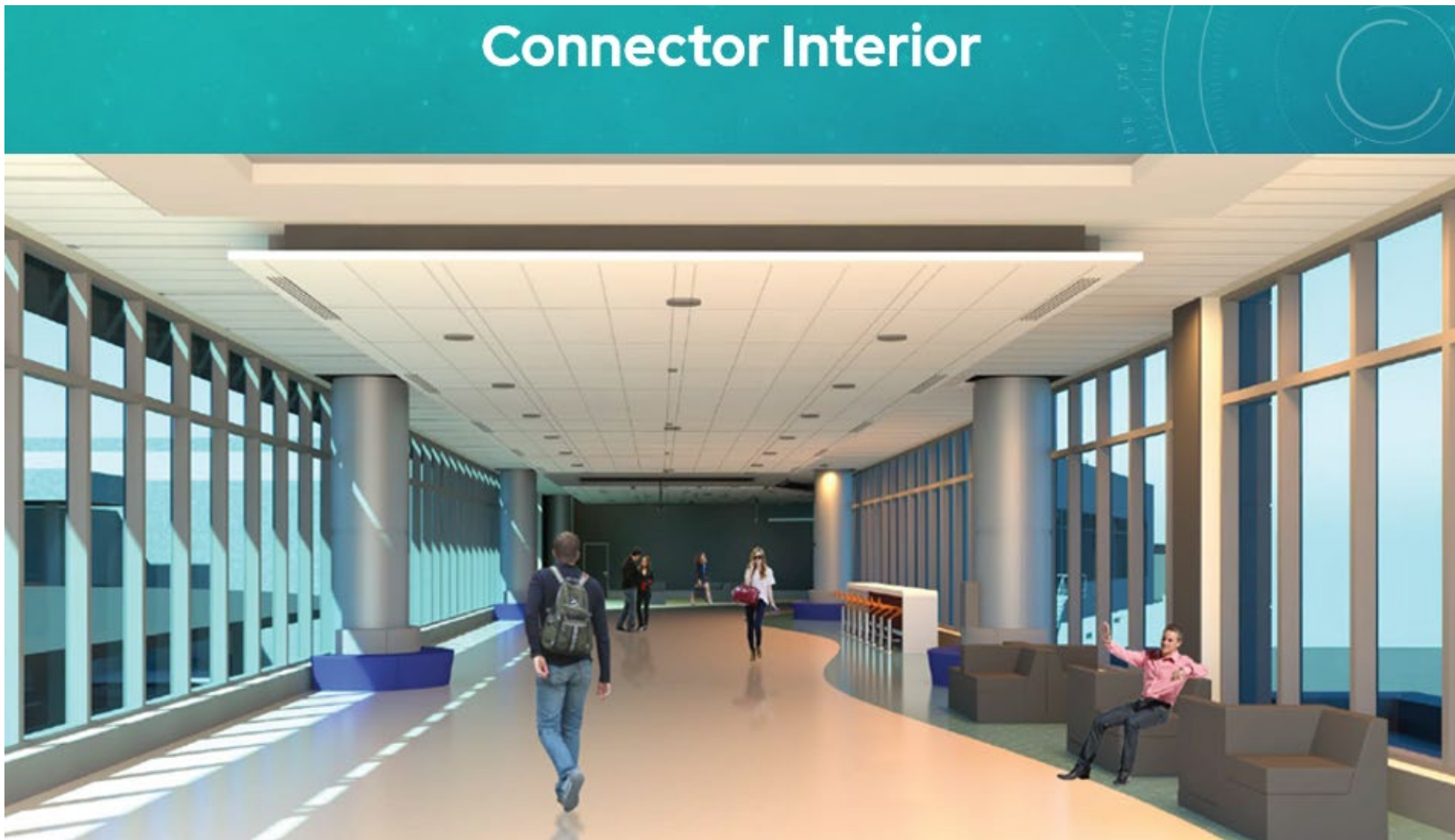
Artwork Site



Terminal 2-3 Connector Art Lounge Project
Fort Lauderdale-Hollywood International Airport

Artwork Site

Connector Interior



Terminal 2-3 Connector Art Lounge Project Fort Lauderdale-Hollywood International Airport

Artwork Proposal

CONCEPT: LAST DIP

LAST DIP WAS INSPIRED BY A PERSONAL RITUAL I SHARED WITH MY DAUGHTERS WHILE TRAVELING: AT THE END OF EACH DAY, JUST BEFORE HEADING HOME, WE WOULD EXCLAIM, "OK, ONE LAST DIP!" AND RUSH BACK INTO THE WATER FOR ONE FINAL SWIM. THAT SPONTANEOUS JOY AND BITTERSWEET SENSE OF DEPARTURE IS SOMETHING MANY TRAVELERS ASSOCIATE WITH DESTINATIONS LIKE FORT LAUDERDALE. THIS INSTALLATION CAPTURES THAT SPIRIT THROUGH SEVEN OVERSIZED, BRIGHTLY COLORED, BIRD-SHAPED FLOAT RINGS, DISPERSED THROUGHOUT THE CONNECTOR AS THOUGH GENTLY DRIFTING ACROSS A POOL. EACH RING IS POSITIONED AT SEATING HEIGHT, CREATING CIRCULAR GATHERING SPOTS WHERE TRAVELERS CAN SIT FACING INWARD OR OUTWARD. WHEN FILLED WITH PASSENGERS, THE INSTALLATION COMES ALIVE AS A PLAYFUL TABLEAU OF PEOPLE TAKING THEIR OWN "LAST DIP" BEFORE BOARDING. EQUAL PARTS HUMOROUS AND FUNCTIONAL, THE PIECE OFFERS A REFRESHING PAUSE WHILE MAINTAINING THE EASY FLOW OF CIRCULATION THROUGH THE SPACE.



Terminal 2-3 Connector Art Lounge Project Fort Lauderdale-Hollywood International Airport

Artwork Proposal

LAST DIP | SCALE AND QUANTITY

DIMENSIONS: ~7" TALL X 9" WIDE / SEATING HEIGHT ~19"
PEDESTRIANS: EACH UNIT CAN HOLD ~5 ADULTS (USING 36" SPACING)

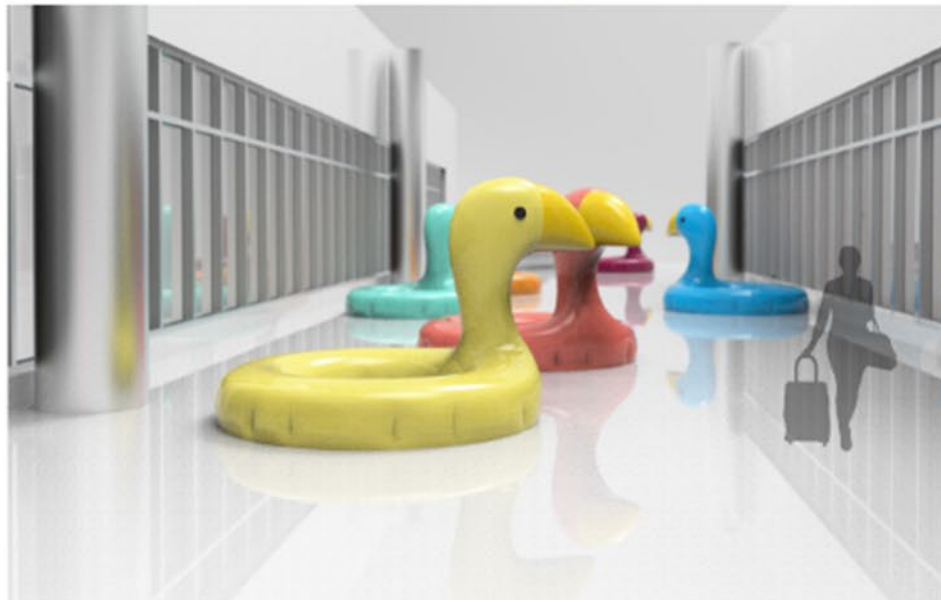
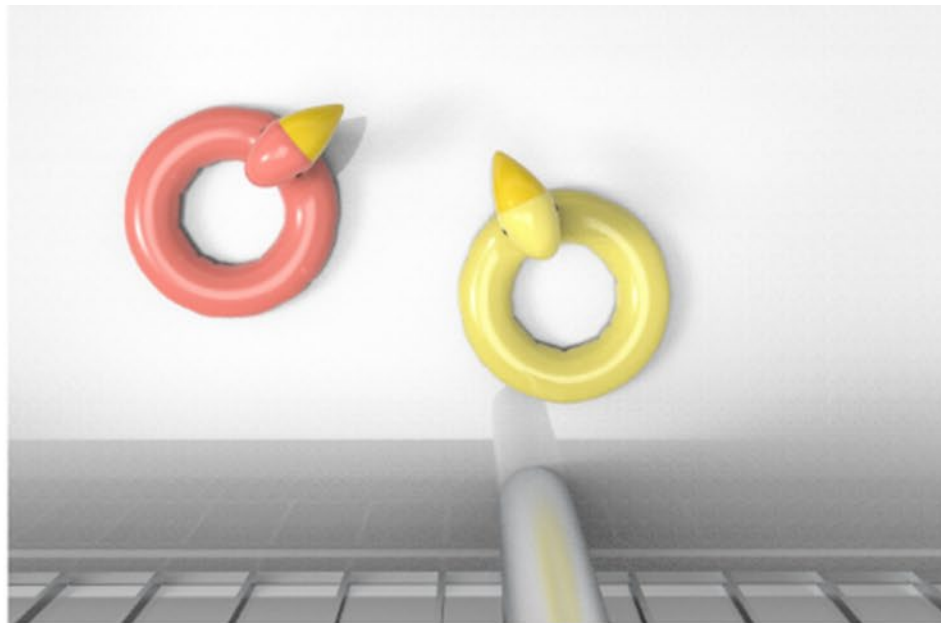
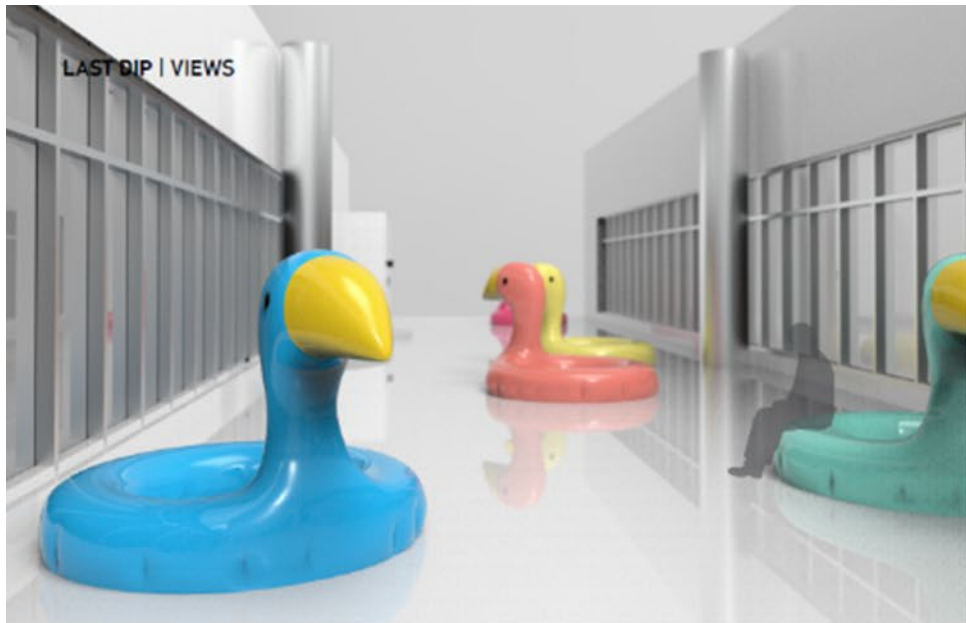


QUANTITY: 7 UNITS
ARRANGEMENT: DISPERSED BUT MAINTAINING 8.5' WALKWAY



Terminal 2-3 Connector Art Lounge Project
Fort Lauderdale-Hollywood International Airport

Artwork Proposal

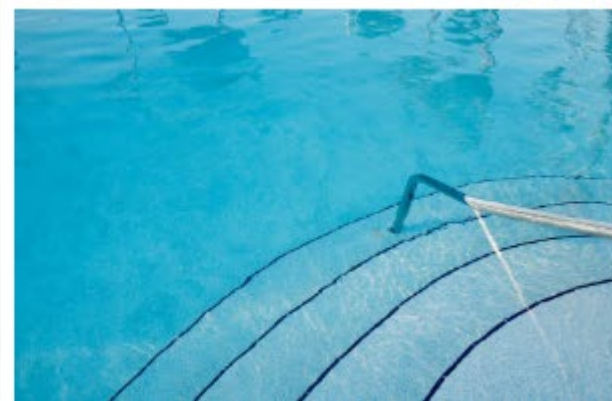
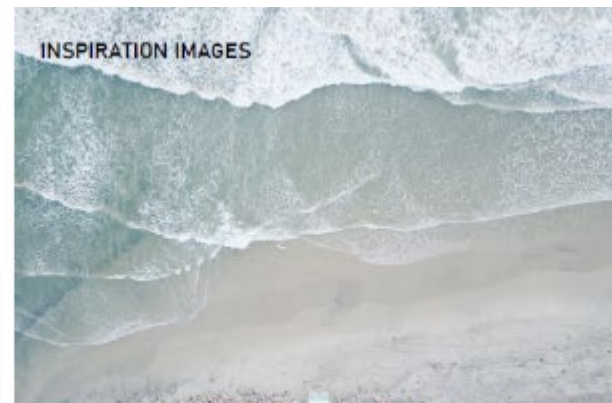
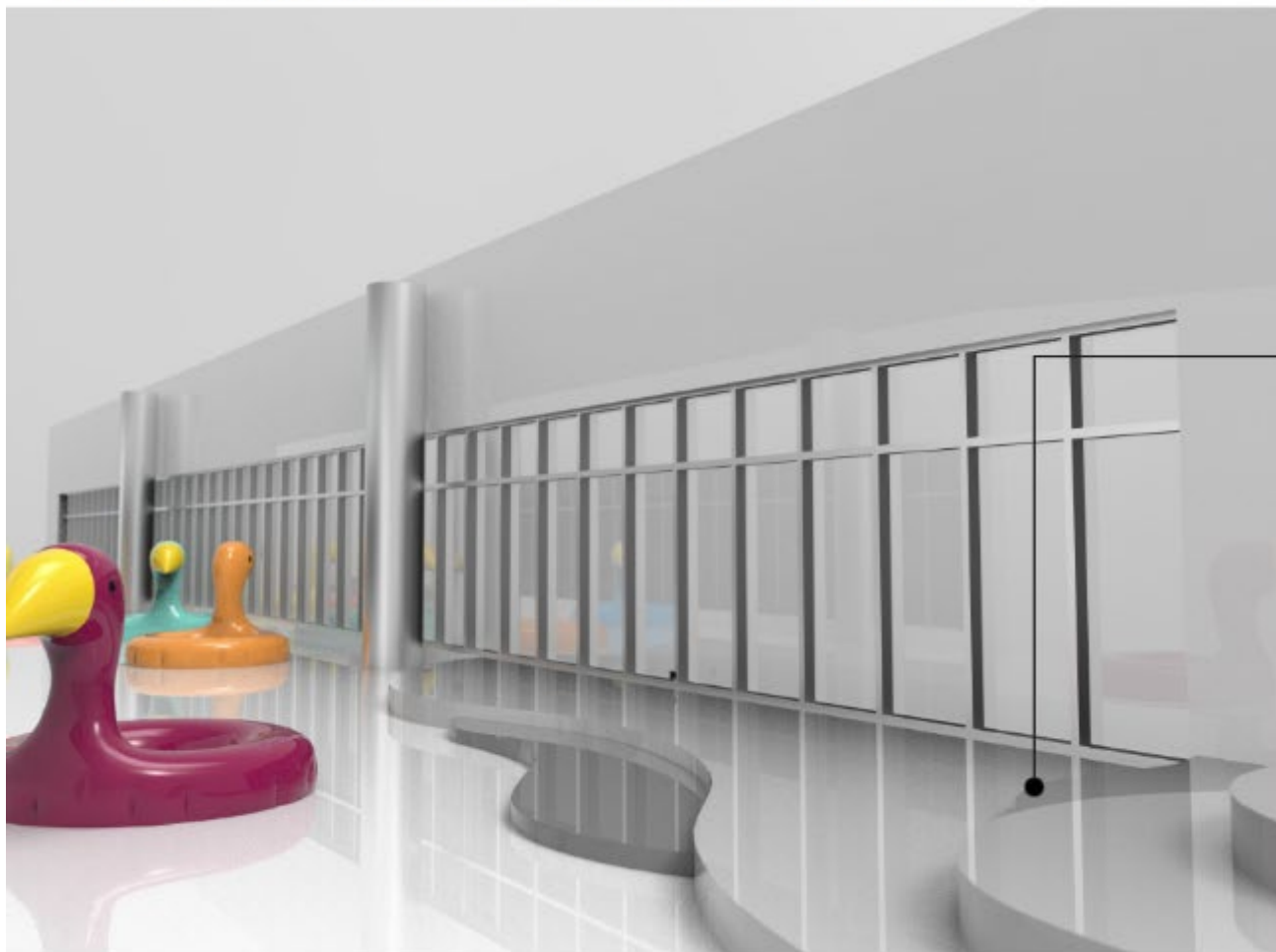


Terminal 2-3 Connector Art Lounge Project Fort Lauderdale-Hollywood International Airport

Artwork Proposal

LAST DIP | SECONDARY ELEMENTS

THIS SECONDARY ELEMENT DRAWS INSPIRATION FROM THE LAYERED CONTOURS THAT DEFINE FORT LAUDERDALE'S SHORELINE, WATERWAYS, AND POOLS. ALONG THESE EDGES, WAVES LAP AND RECEDE, RIPPLES EXTEND FROM MANGROVES, AND STEPPED TERRACES PULL PEOPLE TOWARD THE WATER. INSIDE THE CONNECTOR, THESE CONTOURS BECOME SCULPTURAL—FLOWING ALONG ONE WALL LIKE THE EDGE OF A WATERFRONT. EACH LAYER RISES INTO LOW, ORGANIC STEPS THAT INVITE TRAVELERS TO "WALK INTO THE WATER" AND REST WITHIN THE FORM.



Terminal 2-3 Connector Art Lounge Project
Fort Lauderdale-Hollywood International Airport

Artwork Proposal

