

LOCATION MAP

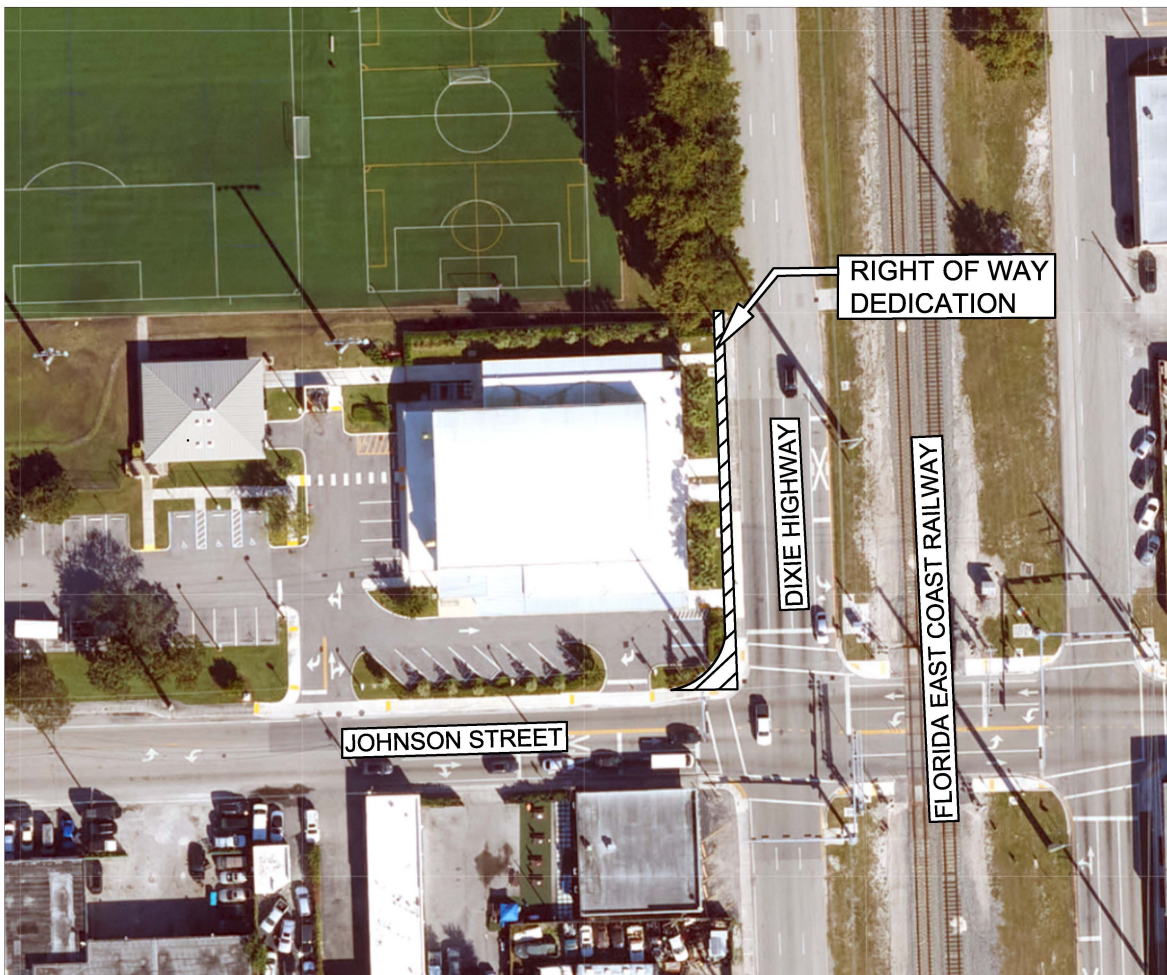
SECTION 10, TOWNSHIP 51 SOUTH, RANGE 42 EAST

PROJECT: PD-2024-06
FROM: CITY OF HOLLYWOOD
TO: BROWARD COUNTY
MUNICIPALITY: CITY OF HOLLYWOOD
COMMISSION DISTRICT: 6



LEGEND:

 = RIGHT OF WAY DEDICATION



Scale:	Drawn By:	Date:	Checked By:	Date:	File Location:
Not To Scale	SB	4/30/2026	JSS/TG	04/30/2026	E:\RW\Location Maps\Deeds and Easements\PD-2024-06.dwg