

# LOCATION MAP

SHEET 1 of 1

SECTION 27 & 28, TOWNSHIP 47 SOUTH, RANGE 41 EAST

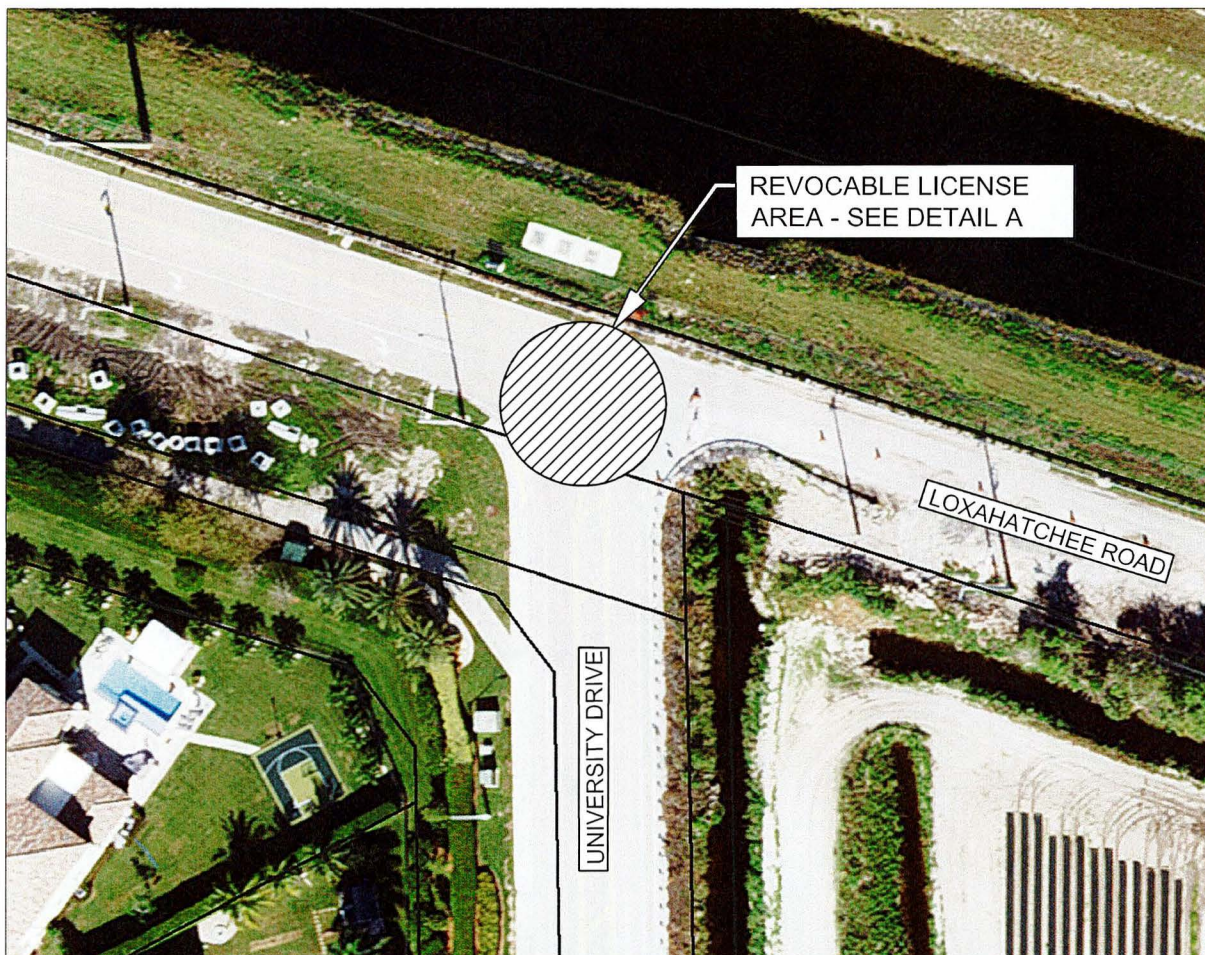
REVOCABLE LICENSE AGREEMENT BETWEEN  
BROWARD COUNTY AND CITY OF PARKLAND  
FOR THE INTERSECTION AT LOXAHATCHEE ROAD &  
UNIVERSITY DRIVE



BROWARD COUNTY REFERENCE NO. 240627002

LEGEND:

 = REVOCABLE LICENSE AREA



Scale:	Drawn By:	Date:	Checked By:	Date:	File Location:
Not To Scale	SB	08/12/2024	TG	08/12/2024	E:\RW\Location Map\Agreements\RLA-2024-12.dwg

# LOCATION MAP

DETAIL A

SECTION 27 & 28, TOWNSHIP 47 SOUTH, RANGE 41 EAST

REVOCABLE LICENSE AGREEMENT BETWEEN  
BROWARD COUNTY AND CITY OF PARKLAND  
FOR THE INTERSECTION AT LOXAHATCHEE ROAD  
AND UNIVERSITY DRIVE

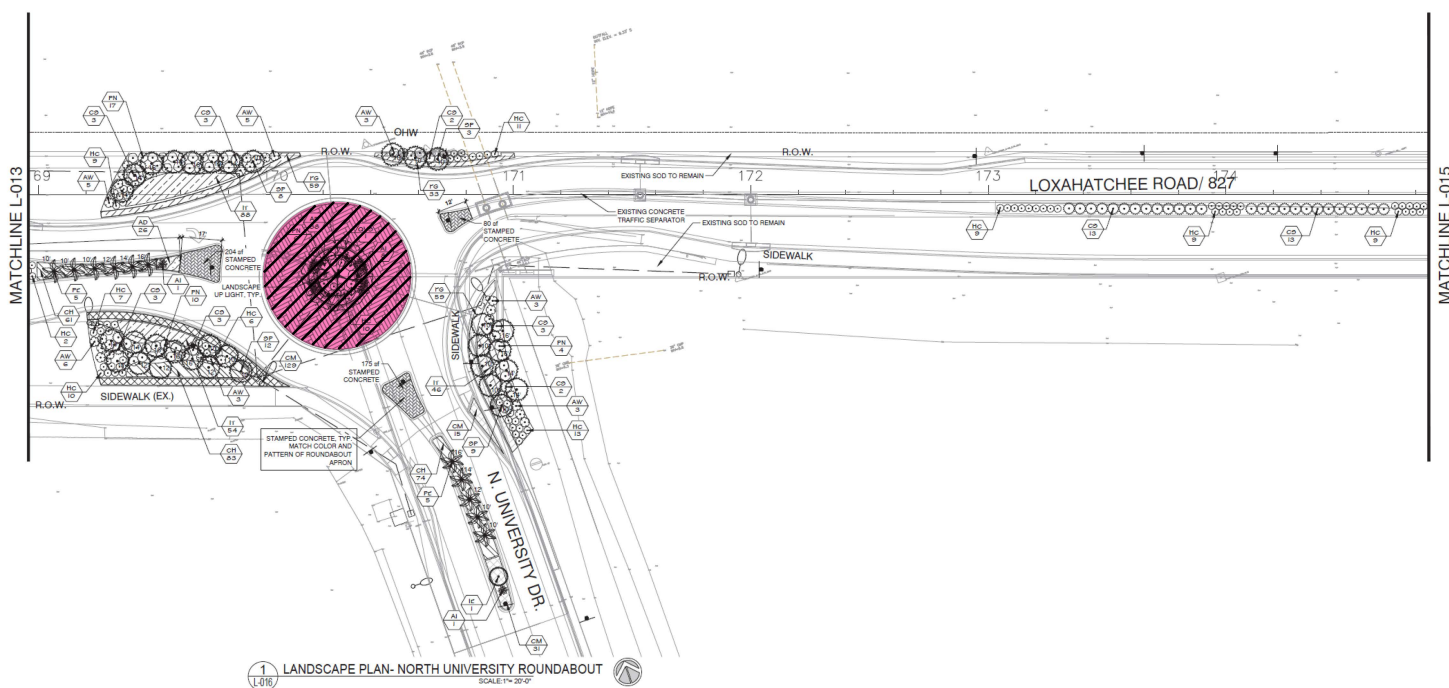


BROWARD COUNTY REFERENCE NO. 240627002

LEGEND:

 = REVOCABLE LICENSE AREA

DETAIL A:



Scale:	Drawn By:	Date:	Checked By:	Date:	File Location:
Not To Scale	SB	07/26/2024	TG	07/26/2024	E:\RW\Location Map\Agreements\RLA-2024-12.dwg