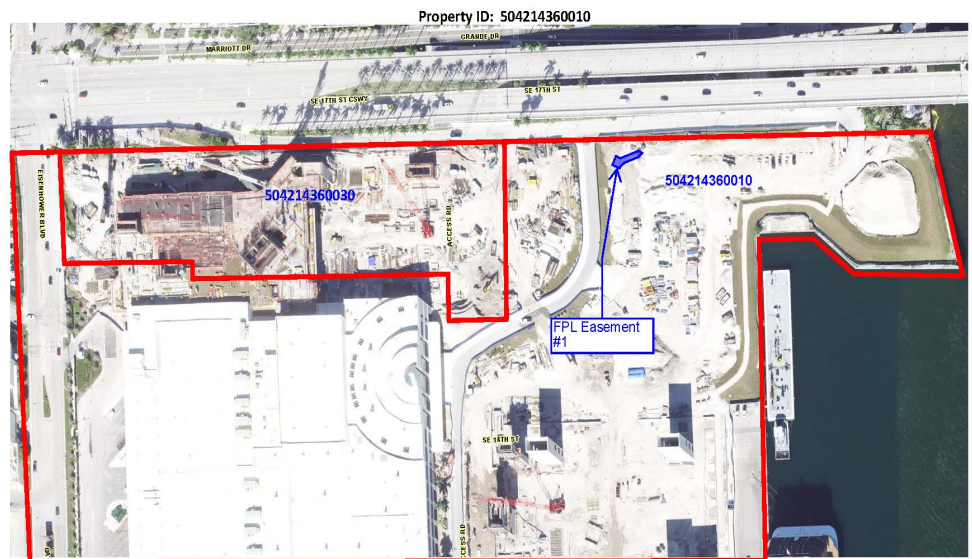


Broward County Convention Center – 1850-1950 Eisenhower Blvd, Fort Lauderdale FL 33316

Facts	General Information
Site Ownership:	Broward County
Site Location:	The subject property is Broward County Convention Center at 1850-1950 Eisenhower Blvd, in Fort Lauderdale, FL 33316
Folio Number:	504214360010
Parcel Size:	Approximately 4,119,086 square feet.
Commission District:	4
How Acquired:	Parcels were acquired by the County via Quit Claim Deed dated November 16, 2016, and recorded on November 21, 2016, with Instrument # 114055572 in the Official Record Books of Broward County.
Zoning in Area:	PEDD PORT EVERGLADES DEVELOPMENT DISTRICT
Land Use:	70 Transportation
Legal Description:	PORT EVERGLADES PLAT NO 2 108-31 B PARCEL A LESS POR DESC:COMM SW COR OF NE1/4 OF SE1/4 OF SEC 14-50-42,NLY 289,ELY 95 TO POB, ELY 220,NLY 792,WLY 220,SLY 411, WLY 15,SLY 110,ELY 15,SLY 271 TO POB,& LESS POR PAR A DESC AS COM NW COR PAR A,E 80 TO POB,CONT E 832,S 288.81,W 114.03,N 88.96,W 475.01,N 29.73,W 235,N 168.61 TO POB LESS POR INCL'D IN INSTR # 119846011

Aerial Photo of Site:



LEGEND:
— = Broward County Owned Property Line