

SOURCE: GOOGLE EARTH PRO

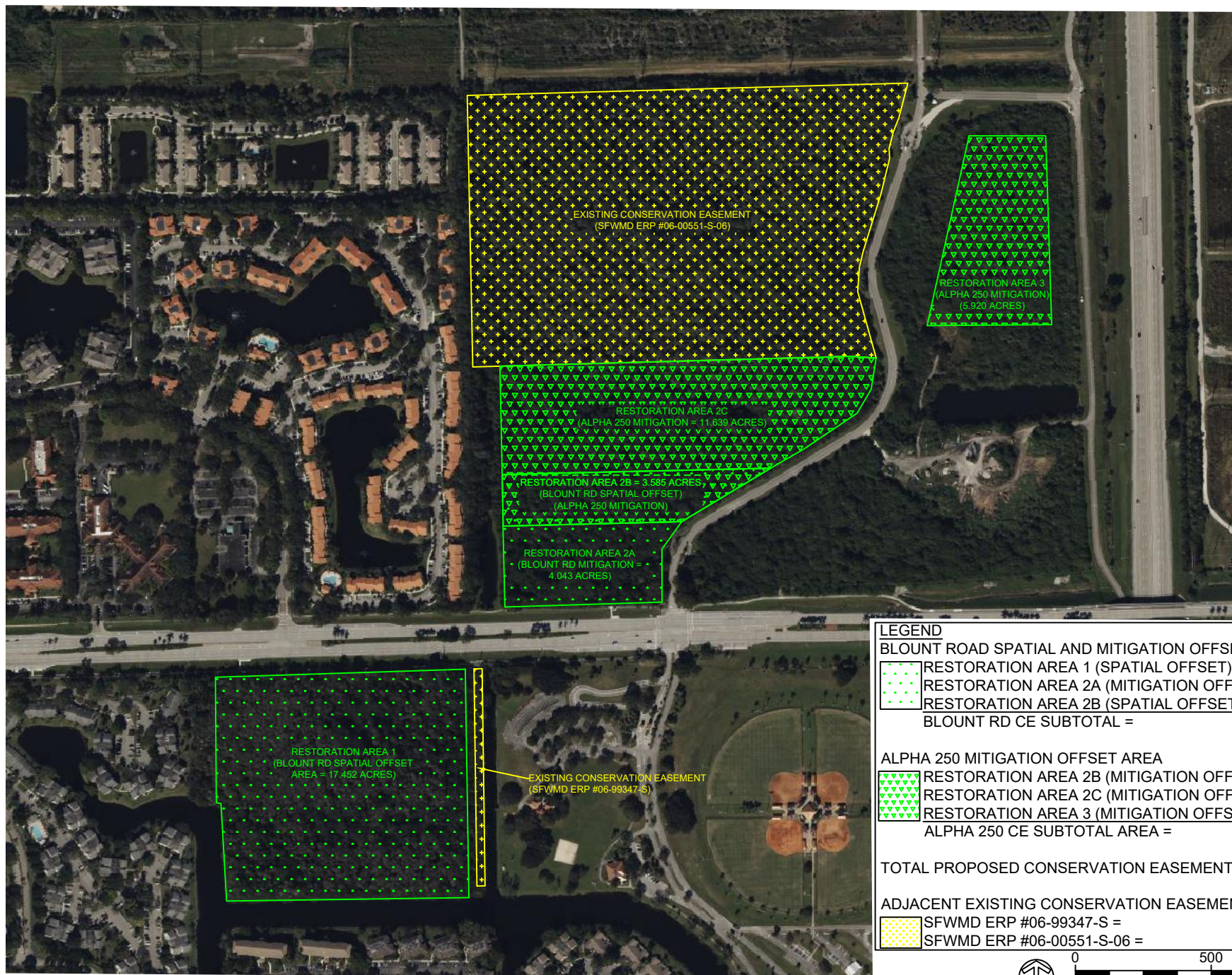
PROJECT NAME: ALPHA 250 CE
PROJECT #: 9834.00
DATE: 06/29/2025
CREATED BY: RMH
CHECKED BY: KLN

RESTORATION AREA - LOCATION MAP FIGURE F-1

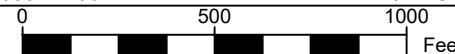


PHONE NO. 561.687.2220
CERT NO. 33574
LB NO. 7055

2035 VISTA PARKWAY
WEST PALM BEACH, FL 33411



LEGEND	
BLOUNT ROAD SPATIAL AND MITIGATION OFFSET AREA	
RESTORATION AREA 1 (SPATIAL OFFSET) =	17.452 AC.
RESTORATION AREA 2A (MITIGATION OFFSET) =	4.043 AC.
RESTORATION AREA 2B (SPATIAL OFFSET) =	3.585 AC.
BLOUNT RD CE SUBTOTAL =	25.08 AC.
ALPHA 250 MITIGATION OFFSET AREA	
RESTORATION AREA 2B (MITIGATION OFFSET) =	3.585 AC.
RESTORATION AREA 2C (MITIGATION OFFSET) =	11.639 AC.
RESTORATION AREA 3 (MITIGATION OFFSET) =	5.920 AC.
ALPHA 250 CE SUBTOTAL AREA =	21.144 AC.
TOTAL PROPOSED CONSERVATION EASEMENT AREA = 42.639 AC.	
ADJACENT EXISTING CONSERVATION EASEMENTS	
SFWMD ERP #06-99347-S =	1.10 AC.
SFWMD ERP #06-00551-S-06 =	32 AC.



SOURCE: FDOT AERIALS GIS

PROJECT NAME: ALPHA 250 CE
 PROJECT #: 9834.00
 DATE: 06/29/2025
 CREATED BY: RMH
 CHECKED BY: KLN

RESTORATION AREAS PLAN VIEW FIGURE F-2



PHONE NO. 561.687.2220
 CERT. NO. 33574
 LB NO. 7055

2035 VISTA PARKWAY
 WEST PALM BEACH, FL 33411



NOTES:

- NO ENHANCEMENT PLANTINGS PROPOSED FOR RESTORATION AREA 1
- NO FUNCTIONAL GAIN FROM THIS AREA IS PROPOSED. THIS AREA IS ONLY FOR OFFSETTING THE SPATIAL AREA OF THE EXISTING CE
- MAINTENANCE ACTIVITIES TO COMPLY WITH APPROVED MAINTENANCE PLAN
- THE LISTED ORCHID SPECIES, *ELTROPECTRIS CALCARATA*, IS PRESENT WITHIN THIS AREA. MAINTENANCE CREW SHOULD BE ABLE TO IDENTIFY SPECIES
- CONSERVATION EASEMENT SIGNAGE AND CHAINLINK FENCING (OR EQUIVALENT) WILL BE PLACED ALONG THE NORTH BOUNDARY LINE ADJACENT TO SAMPLE ROAD.

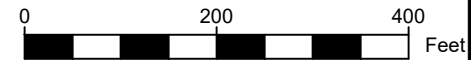
LEGEND

- RESTORATION AREA 1 (SPATIAL OFFSET) = 17.452 AC.
 CHAINLINK FENCING (OR EQUIVALENT) = 982 LINEAR FEET
 CONSERVATION SIGNAGE = 3 SIGNS

SOURCE: FDOT AERIALS GIS

PROJECT NAME: ALPHA 250 CE
 PROJECT #: 9834.00
 DATE: 06/29/2025
 CREATED BY: RMH
 CHECKED BY: KLN

RESTORATION AREA 1 PLAN VIEW FIGURE F-3



PHONE NO. 561.687.2220
 CERT NO. 33574
 LB NO. 7055

2035 VISTA PARKWAY
 WEST PALM BEACH, FL 33411



LEGEND

	RESTORATION AREA 2A (BLOUNT RD MITIGATION OFFSET) = 4.043 AC.
	RESTORATION AREA 2B (BLOUNT RD SPATIAL OFFSET) = 3.585 AC.
	RA 2A SPLIT RAIL FENCING (OR EQUIVALENT) = 898 LINEAR FEET
	RA 2B SPLIT RAIL FENCING (OR EQUIVALENT) = 382 LINEAR FEET
	RA 2A CONSERVATION SIGNAGE = 4 SIGNS
	RA 2B CONSERVATION SIGNAGE = 3 SIGNS
	SILT FENCING

SOURCE: FDOT AERIALS GIS

PROJECT NAME: ALPHA 250 CE
PROJECT #: 9834.00
DATE: 06/29/2025
CREATED BY: RMH
CHECKED BY: KLN

RESTORATION AREAS 2A AND 2B PLAN VIEW FIGURE F-4

RESTORATION AREA 2A PLANT SCHEDULE (4.043 ACRES)

QTY	COMMON NAME	SCIENTIFIC NAME	SIZE	SPACING
100	POND CYPRESS	<i>Taxodium ascendens</i>	30 GAL	30' O.C.
15	STRANGLER FIG	<i>Ficus aurea</i>	25 GAL	30' O.C.
15	RED MAPLE	<i>Acer rubrum</i>	30 GAL	30' O.C.
15	SWAMP BAY	<i>Persea palustris</i>	7 GAL	30' O.C.
10	DAHOO HOLLY	<i>Ilex cassine</i>	7 GAL	30' O.C.
20	POND APPLE	<i>Annona glabra</i>	7 GAL	30' O.C.
100	BUTTONBUSH	<i>Cephalanthus occidentalis</i>	3 GAL	10' O.C.
100	WILD COFFEE	<i>Psychotria nervosa</i>	3 GAL	10' O.C.
100	LEATHER FERN	<i>Acrostichum danaeifolium</i>	3 GAL	10' O.C.
600	SAWGRASS	<i>Cladium jamaicense</i>	3 GAL	10' O.C.
600	ROYAL FERN	<i>Osmunda regalis</i>	1 GAL	10' O.C.
600	SWAMP FERN	<i>Blechnum serrulatum</i>	1 GAL	10' O.C.

RESTORATION AREA 2B PLANT SCHEDULE (3.585 ACRES)

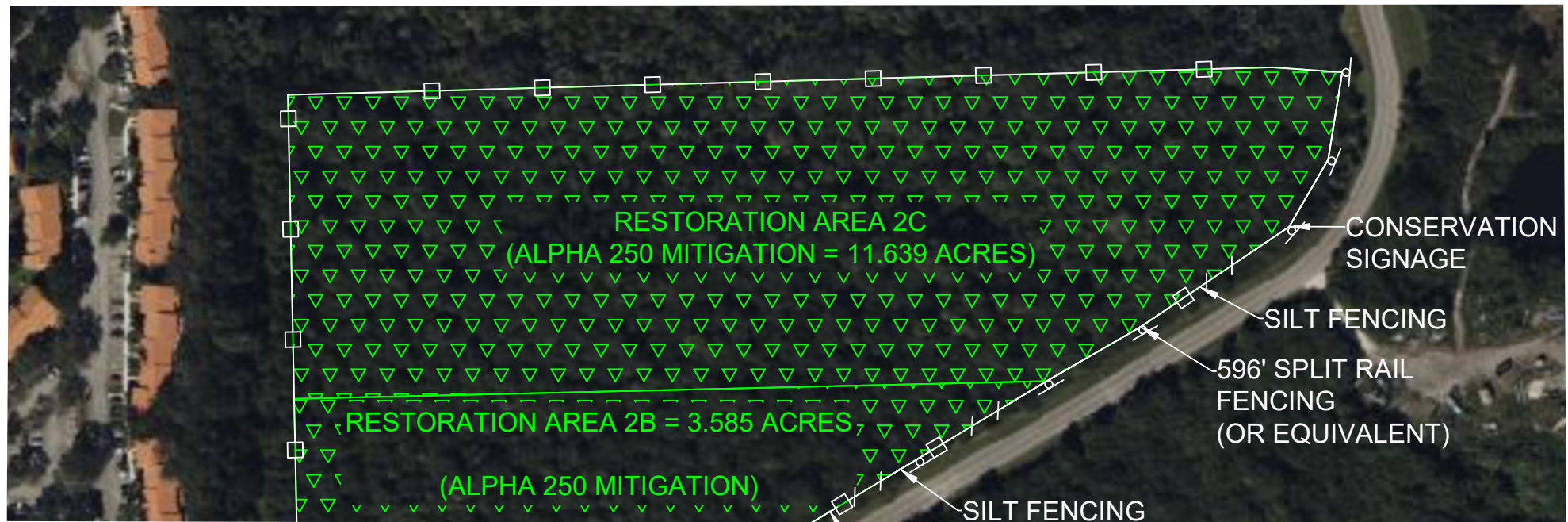
QTY	COMMON NAME	SCIENTIFIC NAME	SIZE	SPACING
90	POND CYPRESS	<i>Taxodium ascendens</i>	30 GAL	30' O.C.
15	STRANGLER FIG	<i>Ficus aurea</i>	25 GAL	30' O.C.
15	RED MAPLE	<i>Acer rubrum</i>	30 GAL	30' O.C.
15	SWAMP BAY	<i>Persea palustris</i>	7 GAL	30' O.C.
15	DAHOO HOLLY	<i>Ilex cassine</i>	7 GAL	30' O.C.
15	POND APPLE	<i>Annona glabra</i>	7 GAL	30' O.C.
100	BUTTONBUSH	<i>Cephalanthus occidentalis</i>	3 GAL	10' O.C.
100	WILD COFFEE	<i>Psychotria nervosa</i>	3 GAL	10' O.C.
100	LEATHER FERN	<i>Acrostichum danaeifolium</i>	3 GAL	10' O.C.
500	SAWGRASS	<i>Cladium jamaicense</i>	3 GAL	10' O.C.
500	ROYAL FERN	<i>Osmunda regalis</i>	1 GAL	10' O.C.
600	SWAMP FERN	<i>Blechnum serrulatum</i>	1 GAL	10' O.C.

NOTES:

- ALL FISC CATEGORY I AND II INVASIVE SPECIES TO BE REMOVED BY HAND
- VEGETATIVE DEBRIS WITH DIAMETERS LARGER THAN 2" TO BE REMOVED AND DISPOSED OF AT AN APPROPRIATE LOCATION
- REMAINING DEBRIS (SMALL TWIGS AND LEAVES) CAN BE LEFT IN PLACE
- ENHANCEMENT PLANTINGS TO BE INSTALLED IN A MANNER TO MIMIC NATURAL GROUPINGS
- SPACING SPECIFICATIONS ARE MAXIMUM SPACING AND PLANTS CAN BE PLANTED MORE DENSELY TO ADJUST TO FIELD CONDITIONS
- MAINTENANCE ACTIVITIES TO COMPLY WITH APPROVED MAINTENANCE PLAN
- CONSERVATION EASEMENT SIGNAGE AND SPLIT RAIL FENCING (OR EQUIVALENT) WILL BE PLACED ALONG THE EAST BOUNDARY LINE ADJACENT TO TRADEWINDS ROAD



PHONE NO. 561.687.2220
CERT NO. 33574
LB NO. 7055

**LEGEND**

- RESTORATION AREA 2C (ALPHA 250 MITIGATION OFFSET) = 11.639 AC.
 SPLIT RAIL FENCING (OR EQUIVALENT) = 596 LINEAR FEET
 CONSERVATION SIGNAGE = 4 SIGNS
 SILT FENCING

NOTES:

- ALL FISC CATEGORY I AND II INVASIVE SPECIES TO BE REMOVED BY HAND
- VEGETATIVE DEBRIS WITH DIAMETERS LARGER THAN 2" TO BE REMOVED AND DISPOSED OF AT AN APPROPRIATE LOCATION
- REMAINING DEBRIS (SMALL TWIGS AND LEAVES) CAN BE LEFT IN PLACE
- ENHANCEMENT PLANTINGS TO BE INSTALLED IN A MANNER TO MIMIC NATURAL GROUPINGS
- SPACING SPECIFICATIONS ARE MAXIMUM SPACING AND PLANTS CAN BE PLANTED MORE DENSELY TO ADJUST TO FIELD CONDITIONS
- MAINTENANCE ACTIVITIES TO COMPLY WITH APPROVED MAINTENANCE PLAN
- CONSERVATION EASEMENT SIGNAGE AND SPLIT RAIL FENCING (OR EQUIVALENT) WILL BE PLACED ALONG THE EAST BOUNDARY LINE ADJACENT TO TRADEWINDS ROAD

RESTORATION AREA 2C PLANT SCHEDULE (11.639 ACRES)

QTY	COMMON NAME	SCIENTIFIC NAME	SIZE	SPACING
300	POND CYPRESS	<i>Taxodium ascendens</i>	30 GAL	30' O.C.
50	STRANGLER FIG	<i>Ficus aurea</i>	25 GAL	30' O.C.
50	RED MAPLE	<i>Acer rubrum</i>	30 GAL	30' O.C.
50	SWAMP BAY	<i>Persea palustris</i>	7 GAL	30' O.C.
50	DAHOON HOLLY	<i>Ilex cassine</i>	7 GAL	30' O.C.
50	POND APPLE	<i>Annona glabra</i>	7 GAL	30' O.C.
500	BUTTONBUSH	<i>Cephalanthus occidentalis</i>	3 GAL	10' O.C.
500	WILD COFFEE	<i>Psychotria nervosa</i>	3 GAL	10' O.C.
500	LEATHER FERN	<i>Acrostichum danaeifolium</i>	3 GAL	10' O.C.
1600	SAWGRASS	<i>Cladium jamaicense</i>	3 GAL	10' O.C.
1600	ROYAL FERN	<i>Osmunda regalis</i>	1 GAL	10' O.C.
1600	SWAMP FERN	<i>Blechnum serrulatum</i>	1 GAL	10' O.C.

SOURCE: FDOT AERIALS GIS

PROJECT NAME: ALPHA 250 CE
 PROJECT #: 9834.00
 DATE: 06/29/2025
 CREATED BY: RMH
 CHECKED BY: KLN

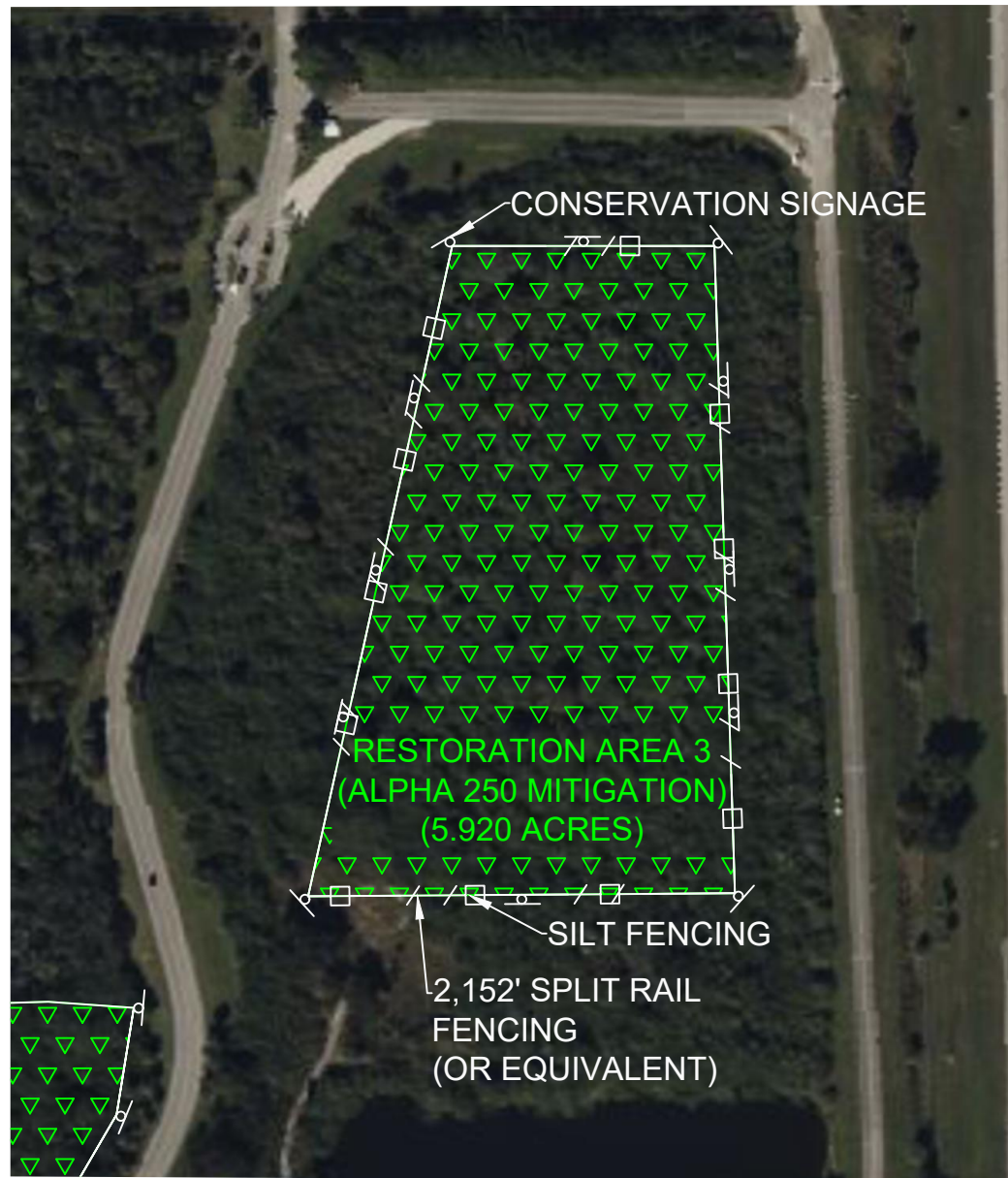
RESTORATION AREA 2C PLAN VIEW

FIGURE F-5



PHONE NO. 561.687.2220
 CERT NO. 33574
 LB NO. 7055

2035 VISTA PARKWAY
 WEST PALM BEACH, FL 33411



SOURCE: FDOT AERIALS GIS

PROJECT NAME: ALPHA 250 CE
 PROJECT #: 9834.00
 DATE: 06/29/2025
 CREATED BY: RMH
 CHECKED BY: KLN

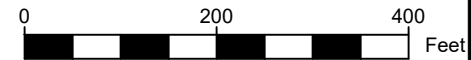
RESTORATION AREA 3 PLAN VIEW FIGURE F-6

RESTORATION AREA 3 PLANT SCHEDULE (5.920 ACRES)

QTY	COMMON NAME	SCIENTIFIC NAME	SIZE	SPACING
130	POND CYPRESS	<i>Taxodium ascendens</i>	30 GAL	30' O.C.
30	STRANGLER FIG	<i>Ficus aurea</i>	25 GAL	30' O.C.
30	RED MAPLE	<i>Acer rubrum</i>	30 GAL	30' O.C.
30	SWAMP BAY	<i>Persea palustris</i>	7 GAL	30' O.C.
30	DAHOON HOLLY	<i>Ilex cassine</i>	7 GAL	30' O.C.
30	POND APPLE	<i>Annona glabra</i>	7 GAL	30' O.C.
300	BUTTONBUSH	<i>Cephalanthus occidentalis</i>	3 GAL	10' O.C.
300	WILD COFFEE	<i>Psychotria nervosa</i>	3 GAL	10' O.C.
300	LEATHER FERN	<i>Acrostichum danaeifolium</i>	3 GAL	10' O.C.
800	SAWGRASS	<i>Cladium jamaicense</i>	3 GAL	10' O.C.
800	ROYAL FERN	<i>Osmunda regalis</i>	1 GAL	10' O.C.
800	SWAMP FERN	<i>Blechnum serrulatum</i>	1 GAL	10' O.C.

NOTES:

- ALL FISC CATEGORY I AND II INVASIVE SPECIES TO BE REMOVED BY HAND
- VEGETATIVE DEBRIS WITH DIAMETERS LARGER THAN 2" TO BE REMOVED AND DISPOSED OF AT AN APPROPRIATE LOCATION
- REMAINING DEBRIS (SMALL TWIGS AND LEAVES) CAN BE LEFT IN PLACE
- ENHANCEMENT PLANTINGS TO BE INSTALLED IN A MANNER TO MIMIC NATURAL GROUPINGS
- SPACING SPECIFICATIONS ARE MAXIMUM SPACING AND PLANTS CAN BE PLANTED MORE DENSELY TO ADJUST TO FIELD CONDITIONS
- MAINTENANCE ACTIVITIES TO COMPLY WITH APPROVED MAINTENANCE PLAN
- CONSERVATION EASEMENT SIGNAGE AND SPLIT RAIL FENCING (OR EQUIVALENT) WILL BE PLACED ALONG THE NORTH, EAST, AND WEST BOUNDARY LINE ADJACENT TO TRADEWINDS ROAD.



PHONE NO. 561.687.2220
 CERT NO. 33574
 LB NO. 7055

2035 VISTA PARKWAY
 WEST PALM BEACH, FL 33411