

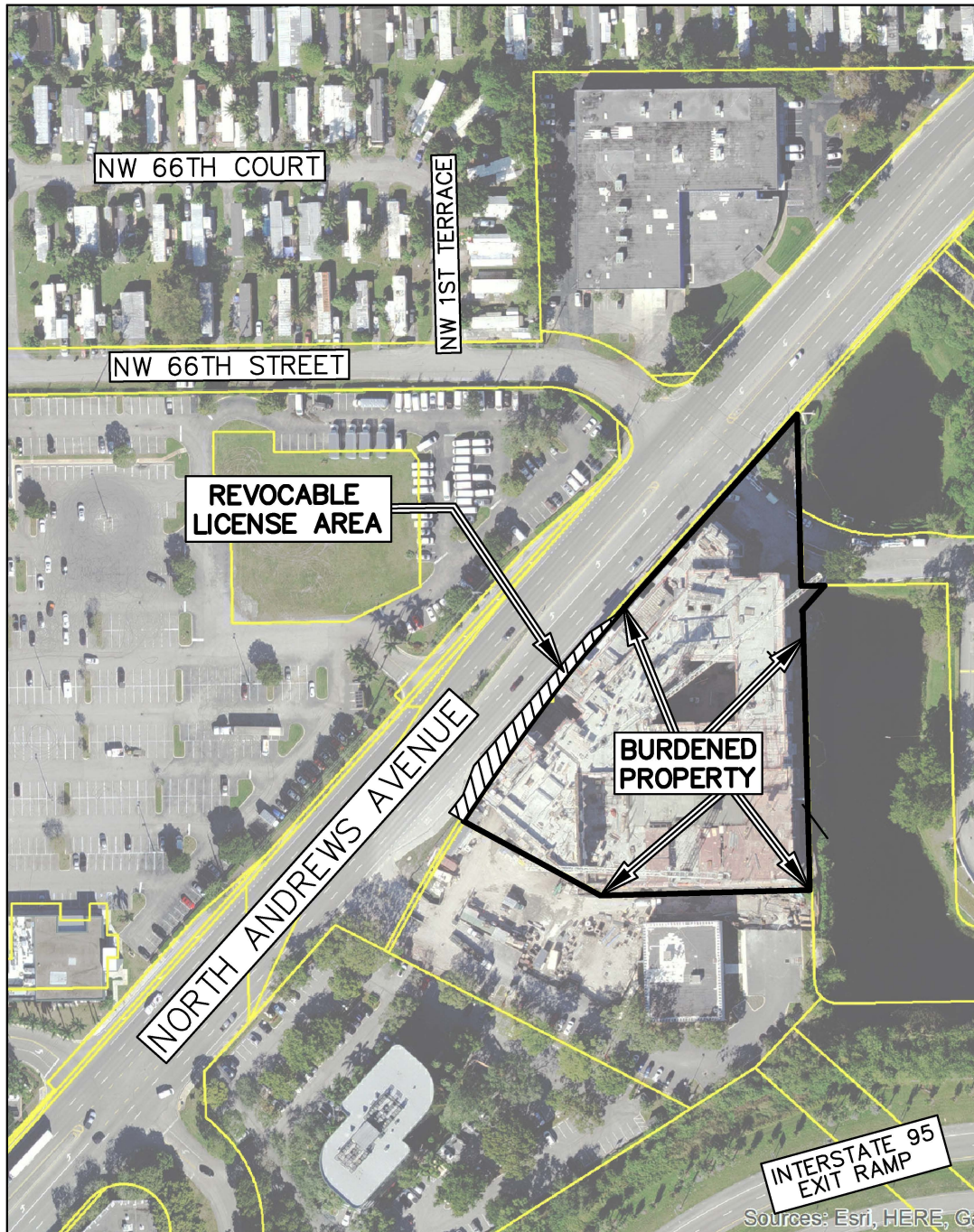
LOCATION MAP

Revocable License Agreement between Broward County and
Fairfield Cypress LP and the City of Fort Lauderdale
Broward County Reference No. 200923002



SECTION 10, TOWNSHIP 49 SOUTH, RANGE 42 EAST

EXHIBIT B



LEGEND:



REVOCABLE LICENSE AREA



BURDENED PROPERTY

SHEET 1 OF 1

Scale:	Drawn by:	Date:	Checked by:	Date:	File Location:
Not to Scale	SB	01/25/24	TG	01/25/24	E:\RW\Location Maps\Agreements\RLA-2020-14.dwg