

EXHIBIT 2

PROPOSED

RESOLUTION NO.

1 A RESOLUTION OF THE BOARD OF COUNTY COMMISSIONERS OF BROWARD
2 COUNTY, FLORIDA, TRANSMITTING TO DESIGNATED STATE AGENCIES A
3 PROPOSED AMENDMENT TO THE BROWARD COUNTY COMPREHENSIVE PLAN;
4 UPDATING THE WETLANDS MAP OF THE NATURAL RESOURCE MAP SERIES OF
5 THE BROWARD COUNTY COMPREHENSIVE PLAN; AND PROVIDING FOR AN
6 EFFECTIVE DATE.

7
8 WHEREAS, Broward County adopted the Broward County Comprehensive Plan
9 on April 25, 2017 (the Plan);

10 WHEREAS, the Department of Commerce has found the Plan in compliance with
11 the Community Planning Act;

12 WHEREAS, Broward County now wishes to propose an update to the Wetlands
13 Map of the Natural Resource Map Series of the Broward County Comprehensive Plan;

14 WHEREAS, the Planning Council, as the local planning agency for the Broward
15 County Land Use Plan, held its hearing on February 22, 2024, with due public notice; and

16 WHEREAS, the Board of County Commissioners held its transmittal public hearing
17 on April 16, 2024, at 10:00 a.m., having complied with the notice requirements specified
18 in Section 163.3184(11), Florida Statutes, NOW, THEREFORE,

19
20 BE IT RESOLVED BY THE BOARD OF COUNTY COMMISSIONERS OF
21 BROWARD COUNTY, FLORIDA:

EXHIBIT A

SECTION I
AMENDMENT REPORT
BROWARD COUNTY LAND USE PLAN
PROPOSED AMENDMENT PCNRM 24-2

**(NATURAL RESOURCE MAP SERIES -
EASTERN BROWARD COUNTY WETLANDS MAP)**

RECOMMENDATIONS/ACTIONS

DATE

I. Planning Council Staff Transmittal Recommendation

February 13, 2024

Planning Council staff recommends approval of the proposed amendment to the Natural Resource Map Series - Eastern Broward County Wetlands Map.

As the Planning Council is aware, the Broward County Charter requires at least one Planning Council public hearing and Article 1.2(A) of the *Administrative Rules Document: BrowardNext* outlines the following circumstances in which a second Planning Council public hearing may be recommended or required:

- (1) At its initial public hearing, the Planning Council takes an action to recommend denial of a proposed amendment; or
- (2) At its initial public hearing, the Planning Council takes an action to recommend approval subject to meeting specific criteria or policy prior to a second Planning Council public hearing; or
- (3) At its initial public hearing, the Planning Council votes by a majority of the members present with a minimum of six (6) affirmative votes for a second Planning Council public hearing; or
- (4) If the County Commission requests by a vote of the majority of members present to request a second Planning Council public hearing; or
- (5) If an objection or comment on adverse impacts to important state resources or facilities is issued during the State of Florida Chapter 163 review process; or
- (6) If State of Florida Chapter 163 requires or is modified to require a second local planning agency public hearing.

If the Planning Council chooses to require a second Planning Council public hearing per Article 1.2(A)(1)(2) or (3), such recommendation must be made as part of its motion.

RECOMMENDATIONS/ACTIONS (continued)

DATE

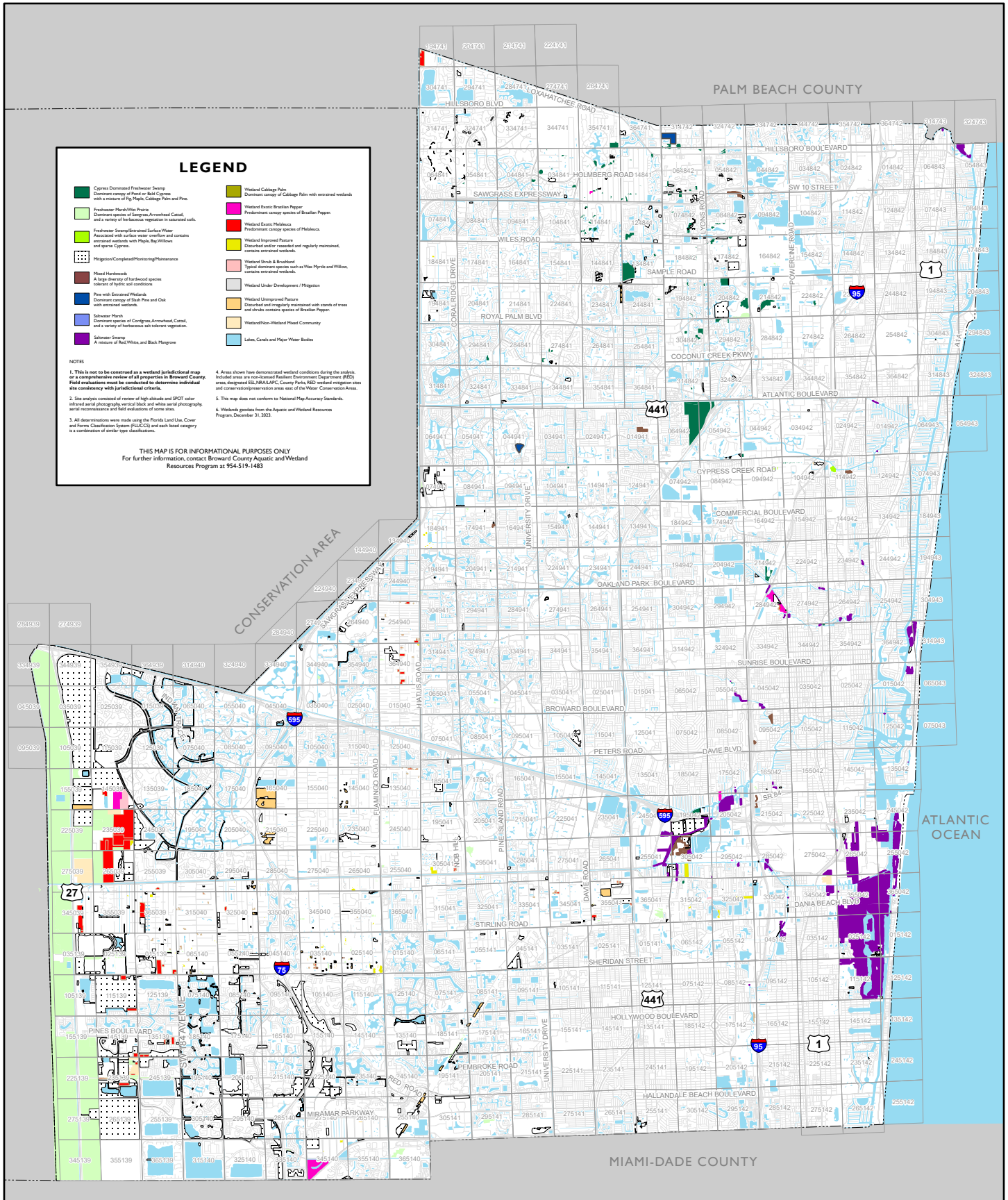
II. Planning Council Transmittal Recommendation

February 22, 2024

Approval per Planning Council staff transmittal recommendation, including not requiring a second Planning Council public hearing. (Vote of the board; Unanimous; 17-0: Abramson, Brunson, Castillo, Fernandez, Fisher, Gomez, Greenberg, Hardin, Harrison, Horland, Newbold, Railey, Rosenof, Ryan, Werthman, Zeman and DiGiorgio)

BROWARD COUNTY LAND USE PLAN NATURAL RESOURCE MAP SERIES

Eastern Broward County Wetlands



LEGEND

Cypress Dominated Freshwater Swamp Dominant canopy of Pine or Bald Cypress with a mixture of Fig, Magnolia, Cabbage Palm and Pine.	Wetland Cabbage Palm Dominant canopy of Cabbage Palm with associated wetlands.
Freshwater Hard/Soft Prairie Dominant species of Sphagnum, Arrowweed, Cattail, and a variety of herbaceous vegetation in saturated soils.	Wetland Exotic: Brazilian Pepper Predominant canopy species of Brazilian Pepper.
Freshwater Swamp/Scattered Surface Water Associated with surface water canyons and contains associated wetlands with Magnolia, Bay Willows and sparse Cypress.	Wetland Exotic: Melaleuca Predominant canopy species of Melaleuca.
Progressive/Completed/Planned/Nonconforming	Wetland Improved Prairie Disturbed and/or regularly mowed and regularly maintained, contains associated wetlands.
Flooded Herbaceous A large diversity of herbaceous species tolerant of hydric soil conditions.	Wetland Shrub & Broadleaf Typical dominant species such as Wax Myrtle and Willow, contains associated wetlands.
Pine with Grounded Wetlands Dominant canopy of Slash Pine and Oak with associated wetlands.	Wetland Under Development / Progression
Saltwater Marsh Dominant species of Cordgrass, Arrowweed, Cattail, and a variety of herbaceous salt tolerant vegetation.	Wetland Unimproved Prairie Disturbed and regularly mowed with stands of trees and shrub canopy species of Brazilian Pepper.
Saltwater Swamp A mixture of Red, White, and Black Mangrove.	Wetland/High-Wetland Mixed Community
	Lakes, Canals and Major Water Bodies

NOTES

- This is not to be construed as a wetland jurisdictional map or a comprehensive wetland delineation in Broward County. Field evaluations must be conducted to determine individual site consistency with jurisdictional criteria.
- Site analysis consisted of review of high altitude and SPOT color aerial and/or photography, vertical block and white aerial photography, aerial reconnaissance and field evaluations of some sites.
- All determinations were made using the Florida Land Use, Cover and Form Classification System (FLUCCS) and each land category is a combination of similar type classifications.
- Areas shown here demonstrate wetland conditions during the project. Included areas are nonconforming Wetlands (Encroachment Department (RED) areas designated ELD, NALAD/DC County Parks, RED wetland mitigation sites and cover necessary for restoration areas east of the Water Conservation Area.
- This map does not conform to National Map Accuracy Standards.
- Wetlands updates from the Aquatic and Wetland Resources Program, December 31, 2023.

THIS MAP IS FOR INFORMATIONAL PURPOSES ONLY
For further information, contact Broward County Aquatic and Wetland Resources Program at 954-519-1483

SOURCES

Broward County Aquatic and Wetland Resources, Broward County Planning Council



NOT TO SCALE